

Blackball Working Group

Surfing Regulations Review

Purpose

- ▶ At the request of the Council the Blackball Working Group was established last fall to review the current resolution and municipal codes regarding regulation of surfing and flotation device restrictions and to make recommendations to the council to optimize public safety and fair use.
- ▶ The Blackball Working Group consists of individuals involved in recreation and enforcement.

Blackball Working Group

The Blackball Working Group consists of:

- ▶ Ron Cole – PB&R Vice Chair
- ▶ Rob Williams – Assistant Chief, Fire Department
- ▶ Mike Halphide – Lifeguard Captain, Fire Department
- ▶ David McGill – Deputy Chief, Police Department
- ▶ Sean Levin – Superintendent, Recreation and Senior Services Department
- ▶ Racquel Valdez – Manager, Recreation and Senior Services Department

History of Surfing Regulations and Blackball

- ▶ May 1966:
The first council resolution was passed that established three designated surfing areas.



History of Surfing Regulations and Blackball



- ▶ Subsequent Council Resolutions from 1967 – 1978: Modified the zones, times, and created closure areas such as 40-44.
- ▶ November 25, 1985: the Council prohibited the use of all flotation devices at the Wedge.

History of Blackball Regulation

- ▶ March 1989- Resolution No. 89-10
 - Made modifications at 40-44 to close at all times during summer months and limited Wedge flotation device policy to only the summer months.
- ▶ May 1993-Resolution No. 93-33
 - Restricts flotation devices from 10:00 am to 5:00 pm from May 1st to October 31st.
- ▶ October 1995- Resolution No. 95-116
 - Set blackball as generally between 12pm to 4pm at the discretion of the supervising Marine Safety Lieutenant.

*Blackball History- Appendix A,
Blackball Staff Report*

Process

- ▶ The Blackball Working Group had two initial meetings on September 11th and 24th.
 - The first meeting was to provide a history of Blackball and state the purpose of the group.
 - The second meeting was to identify a course of action and community outreach program.
- ▶ The Blackball Working Group implemented a public outreach program that included
 - An electronic mailbox for communications and public opinion on the issue (September 24- present)
 - Held a meeting to solicit community input on the issue on (October 21, 2013-present)

Process

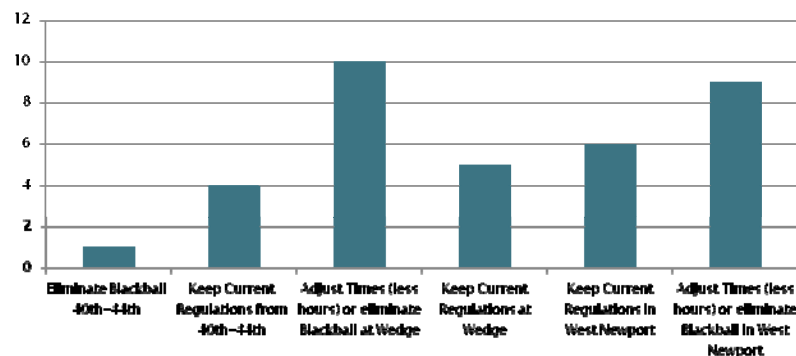
- ▶ The Blackball Working Group met with constituent groups from the Newport Beach area in December and January. The groups represented a variety of beach use activities, including body boarding, surfing, body surfing, and skim boarding. The groups also represented a variety of demographics and had varying interests in areas of the beach.

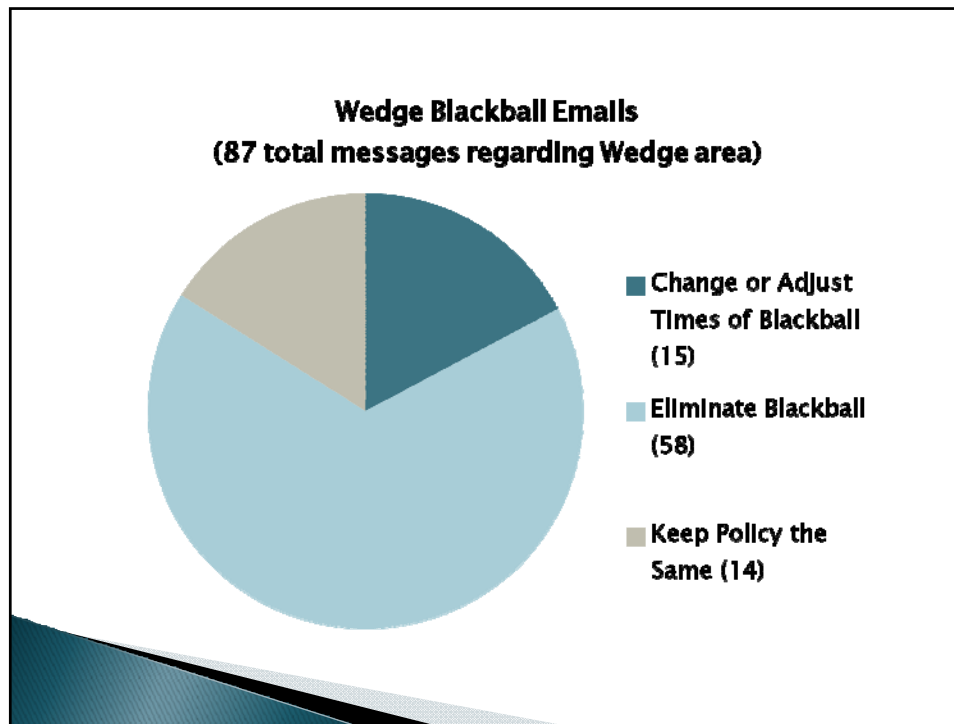
Process

- ▶ The Blackball Working Group reviewed community input and public opinions regarding the blackball policies in order to devise the following recommendations.
- ▶ Key findings indicate a desire by many community members for an all day surfing area as well as areas reserved for swimming, bodysurfing, and skim boarding.
- ▶ The Blackball Working Group arrived at recommendations with a desire to balance issues of public safety, fair use, and feasibility and consistency of enforcement.

Rationale

Summary of Public Comments from Meeting
Total comments by area and concerns
October 21, 2013





West Newport Area Communication Summary

- ▶ 105 electronic messages were received supporting the Newport Surf Council Proposal
- ▶ 5 electronic message were received in direct opposition to the Newport Surf Council Proposal
- ▶ 12 electronic messages were received to uphold current blackball policy in West Newport

Committee Recommendations

1. Rescind Resolution 95-116.
2. Review and recommend the draft Resolution No. 2014-___ to Council for approval.

Committee Recommendations

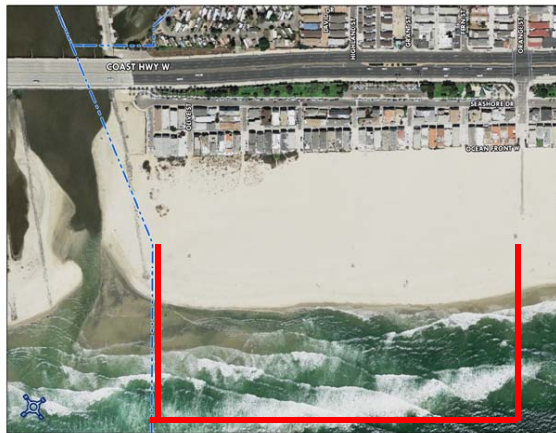
- ▶ In order to facilitate fair access to all forms beach use, the Blackball Working Group recommends
 - At any time of the year in any location, the supervising Marine Safety Watch Commander, or designee, has the authority to blackball (prohibit surfing) when an unsafe condition exists between hard board surfers and other users.
 - That all of Newport Beach be generally regulated (blackballed) from 11:00 am to 4:00 pm from Memorial Day weekend through Labor Day weekend.

Three Areas of Open-Access

- ▶ The following areas are not subject to the general blackball rules, and are open to all beach users, including, but not limited to swimmers, body boarders, and surfers.
1. Orange Street to the City boundary at the Santa Ana River.
 2. 48th Street to 56th Street.
 3. A distance from 20 feet to 100 feet southeast of the Balboa Pier (A Street).

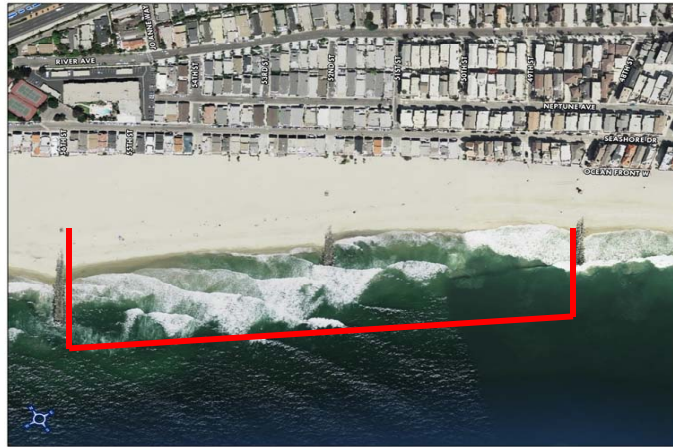
Three Areas of Open-Access

1. Orange Street to the City boundary at the Santa Ana River.



Three Areas of Open-Access

1. 48th Street to 56th Street.



Three Areas of Open-Access

1. A distance from 20 feet to 100 feet southeast of the Balboa Pier (A Street).



Special Restrictions at the “Wedge” Area

- ▶ An adjustment to the area known as the “Wedge” from 20 feet to 600 feet from the West Jetty.
- ▶ An adjustment to the times and dates of “no flotation device” regulations to the area known as the “Wedge” generally from 11:00 am to 4:00 pm from Memorial Day Weekend to Labor Day.

Wedge Detail



“Little Corona” Surfing Area

- ▶ An adjustment of the distances of surfing area 3 in “Little Corona” to include the area of ocean between the prolongations of Poppy Avenue and Cameo Shores Road.



Committee Recommendations

- ▶ The Fire and Police Departments will conduct an internal policy review to insure consistency of enforcement.
 - This policy review will include alignment of practices and policies, public notifications, as well as Police and Marine Operational staff training.
- ▶ Marine Operations division will collect statistics on beach usage by swimmers, surfers, body boarders, and beach visitors, as well as information on conflicts and injuries.

Questions?

Newport Beach Lifeguards Tower 44 Staffing - 2013

<u>Tower 44</u>	<u>Date</u>	<u>Surf</u>		<u>Tower 44</u>	<u>Date</u>	<u>Surf</u>
	April				June	
Sunday	28	1-3 ft		Saturday	1	1-3 ft
	May			Thursday	6	3-5 ft
Thursday	2	2-4 ft		Friday	7	5-8 ft
Friday	3	2-4 ft		Saturday	8	4-6 ft
Saturday	4	2-4 ft		Sunday	9	4-6 ft
Saturday	11	1-3 ft		Monday	10	2-3 ft
Sunday	12	1-3 ft		Tuesday	11	2-3 ft
Sunday	19	1-3 ft		Wednesday	12	2-3 ft
Tuesday	21	3-5 ft		Friday	14	2-3 ft
Wednesday	22	3-5 ft		Monday	17	2-3 ft
Saturday	25	3-5 ft	Memorial	Tuesday	18	3-4 ft
Sunday	26	3-5 ft	Day	Wednesday	19	3-4 ft
Monday	27	3-5 ft	Weekend	Thursday	20	3-5 ft
Tuesday	28	3-5 ft		Friday	21	3-5 ft

All Towers Staffed from June 21 - September 2, 2013

<u>Tower 44</u>	<u>Date</u>	<u>Surf</u>		<u>Tower 44</u>	<u>Date</u>	<u>Surf</u>
	September				October	
Wednesday	4	2-4 ft		Saturday	5	3-5 ft
Thursday	5	2-4 ft		Sunday	6	3-5 ft
Friday	6	1-3 ft				
Saturday	7	1-3 ft				
Saturday	14	1-3 ft				
Saturday	21	2-4 ft				
Sunday	22	2-4 ft				
Saturday	28	1-3 ft				
Sunday	29	1-3 ft				

Newport Beach Lifeguards

Wedge Staffing - 2013

Tower W	Date	Surf	Tower W	Date	Surf	
	April			June		
Thursday	4	4-6 ft	Saturday	1	1-3 ft	
	May		Sunday	2	03-Jan	
Thursday	2	3-6 ft	Thursday	6	3-5 ft	
Friday	3	3-6 ft	Friday	7	5-8 ft	
Saturday	4	3-4 ft	Saturday	8	4-6 ft	
Sunday	5	3-4 ft	Sunday	9	4-6 ft	
Saturday	18	1-3 ft	Saturday	15	2-4 ft	
Sunday	19	1-3 ft	Sunday	16	2-4 ft	
Tuesday	21	3-5 ft	Tuesday	18	3-4 ft	
		Memoria				
Saturday	25	3-5 ft	I	Wednesday	19	3-4 ft
Sunday	26	3-5 ft	Day	Thursday	20	3-5 ft
Monday	27	3-5 ft	Weekend	Friday	21	3-5 ft

All Towers Staffed from June 21 - September 2, 2013

Tower W	Date	Surf	Tower W	Date	Surf
	September			October	
Wednesday	4	2-4 ft	Saturday	5	3-5 ft
Thursday	5	3-5 ft	Sunday	6	3-5 ft
Friday	6	3-5 ft			
Saturday	7	1-3 ft			
Saturday	14	1-3 ft			
Sunday	15	2-4 ft			

Newport Beach Lifeguards

Tower 44 Staffing - 2012

Tower 44	Date	Surf	Tower 44	Date	Surf
	April			June	
Thursday	7	1-3 ft	Friday	1	1-3 ft
Friday	8	1-3 ft	Saturday	2	1-3 ft
Friday	21	2-4 ft	Sunday	3	1-3 ft
Saturday	28	3-5 ft	Tuesday	5	3-5 ft
Sunday	29	3-5 ft	Wednesday	6	3-5 ft
	May		Thursday	7	1-3 ft
Saturday	5	2-4 ft	Friday	8	1-3 ft
Sunday	6	2-4 ft	Saturday	9	1-3 ft
Tuesday	8	2-4 ft	Sunday	10	1-3 ft
Wednesday	9	2-4 ft	Monday	11	1-3 ft
Saturday	12	2-4 ft	Tuesday	12	1-3 ft
Sunday	13	2-4 ft	Wednesday	13	1-3 ft
Saturday	19	2-4 ft	Thursday	14	1-3 ft
Sunday	20	2-4 ft	Friday	15	1-3 ft
Saturday	26	2-4 ft	Saturday	16	1-3 ft
Sunday	27	2-4 ft	Sunday	17	1-3 ft
Monday	28	2-4 ft	Tuesday	19	1-3 ft
		Memorial	Wednesday	20	1-3 ft
		Day	Friday	22	1-3 ft
		Weekend			

All Towers Staffed from June 23 - September 3, 2013

Tower 44	Date	Surf	Tower 44	Date	Surf
	September			October	
Staffed All Days from Wednesday, September 4 through Sunday, September 23.			Saturday	6	3-5 ft
Surf ranges from 1-3 ft to 4-7 ft.			Sunday	7	3-5 ft
Thursday	27	3-5 ft			
Friday	28	3-5 ft			
Saturday	29	3-5 ft			
Sunday	30	3-5 ft			

Newport Beach Lifeguards

Wedge Staffing - 2012

<u>Tower W</u>	<u>Date</u>	<u>Surf</u>	<u>Tower W</u>	<u>Date</u>	<u>Surf</u>
	April			June	
Thursday	8	8-10 ft	Saturday	9	2-4 ft
	May		Sunday	10	2-4 ft
Saturday	12	3-5 ft	Saturday	16	2-4 ft
Sunday	13	3-5 ft	Sunday	17	2-4 ft
Saturday	19	3-5 ft	Monday	18	3-5 ft
Sunday	20	3-5 ft	Tuesday	19	2-4 ft
			Wednesday	20	2-4 ft
			Thursday	21	2-4 ft
			Friday	22	2-4 ft

All Towers Staffed from June 23 - September 3, 2013

<u>Tower W</u>	<u>Date</u>	<u>Surf</u>	<u>Tower W</u>	<u>Date</u>	<u>Surf</u>
	September			October	
Wednesday	4	5-8 ft	Sunday	6	4-7 ft
Thursday	5	5-8 ft			
Friday	6	4-6 ft			
Saturday	15	5-10 ft			
Sunday	16	5-10 ft			
Monday	17	5-8 ft			
Tuesday	18	4-8 ft			
Thursday	20	4-8 ft			
Friday	21	4-8 ft			
Saturday	22	3-6 ft			
Saturday	29	4-8 ft			
Sunday	30	4-8 ft			