

City of Newport Beach

Newport Pier: Possible Pier-End Uses

Presented to
City Council
January 28, 2014



1 Newport Pier

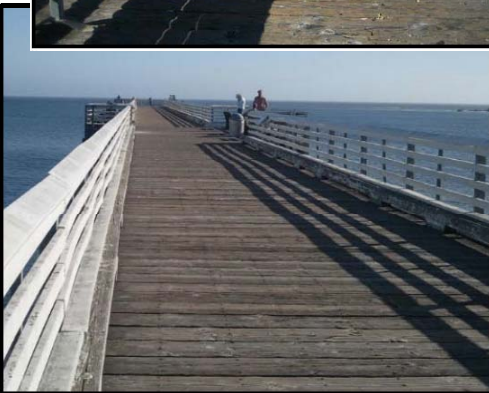
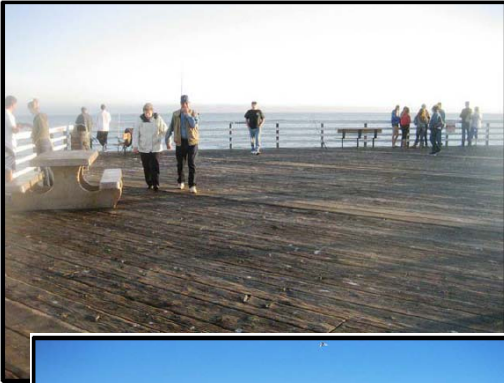


NEWPORT PIER

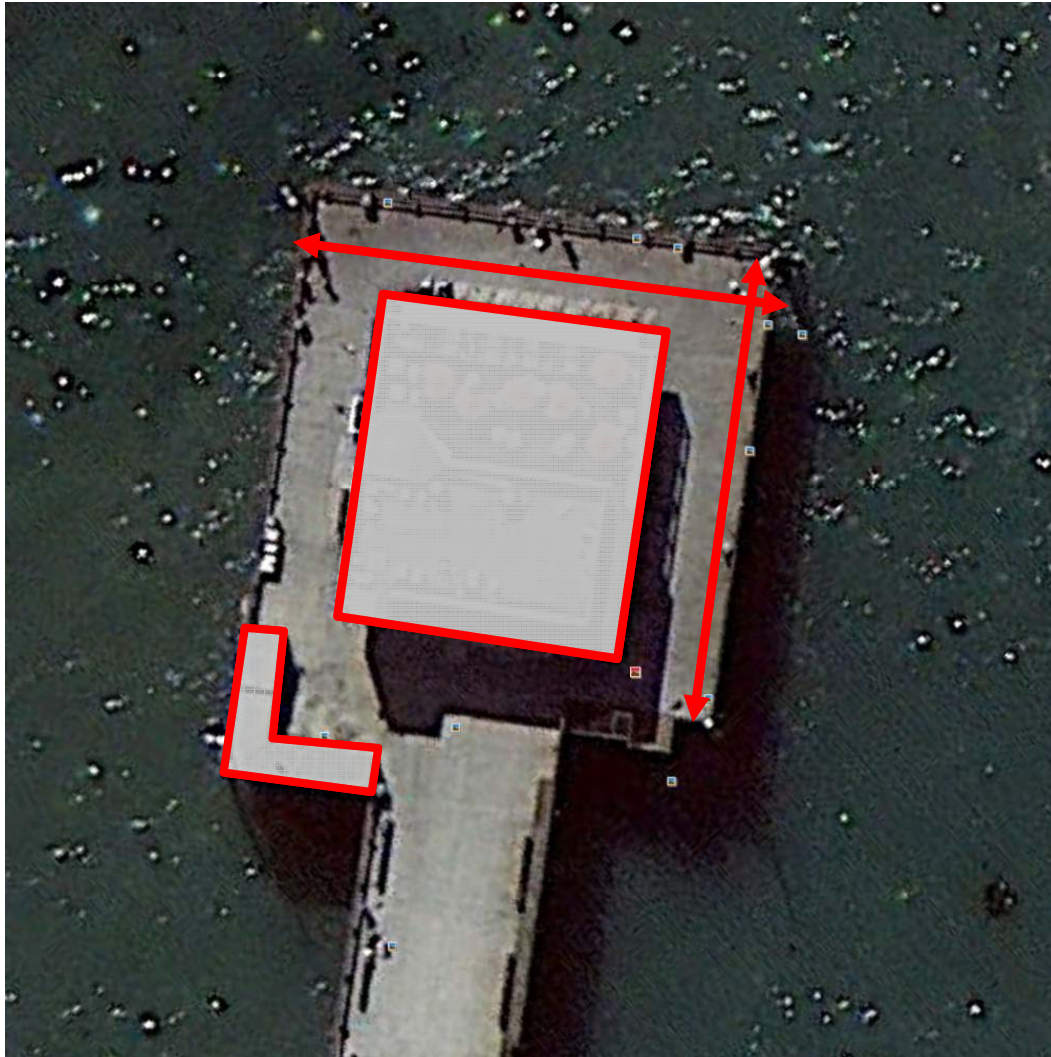


Possible Pier Uses

- Pier Uses may include:
 - Recreation (fishing/pedestrian)
 - Public Events (museum exhibits)
 - Private Events (corporate parties)
 - Temporary Food Vendors
 - Fitness classes
 - Limited ongoing programming by the City



Pier Configuration

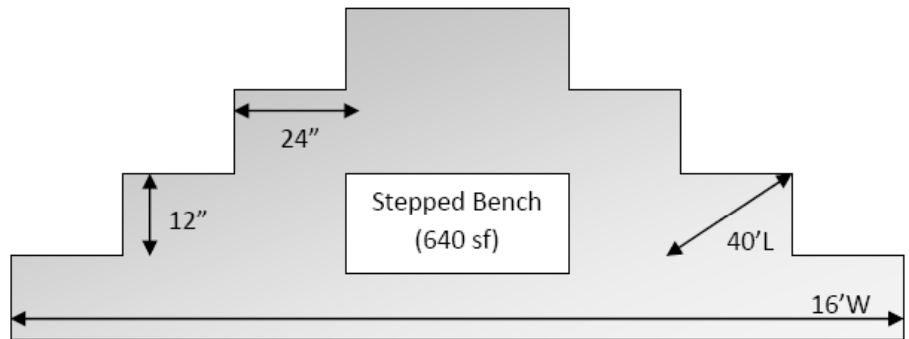


Pier End Dimensions

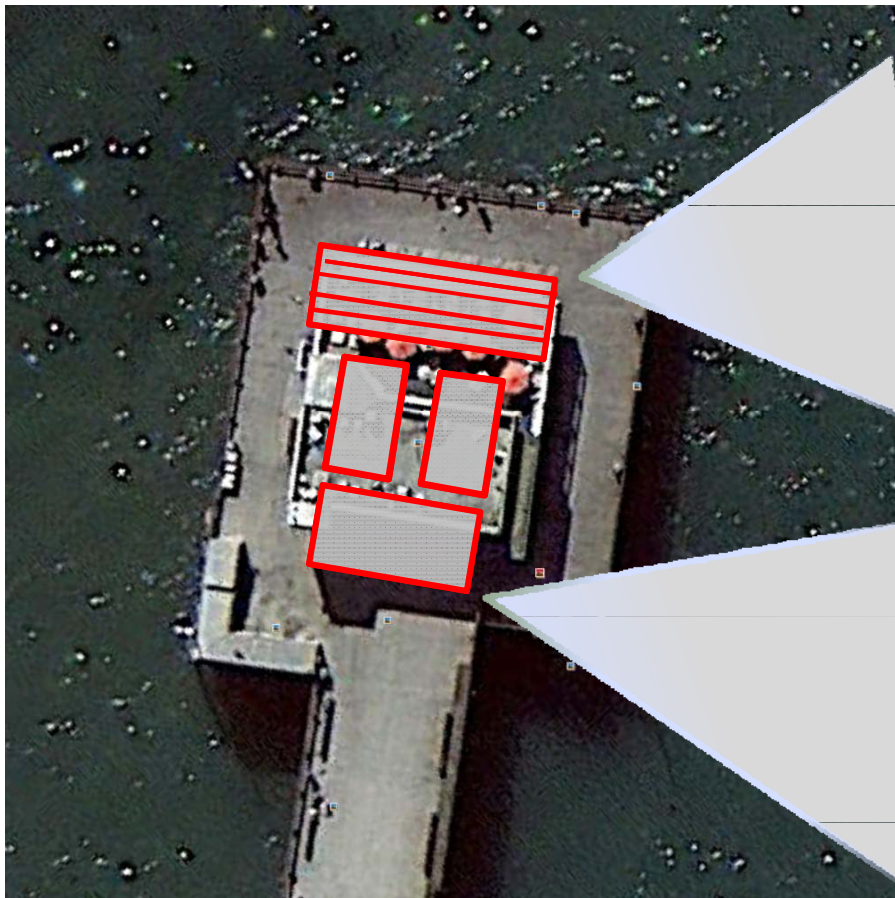
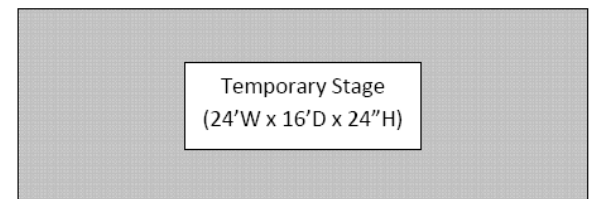
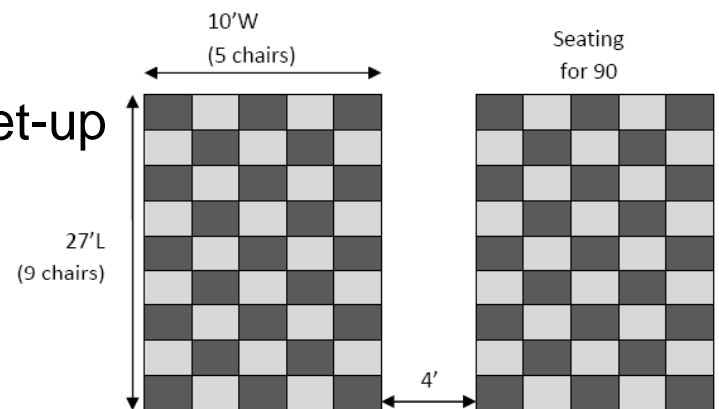
- Pier Deck (80 feet x 80 feet)
 - $\pm 4,720$ square feet open space
 - $\pm 6,400$ total square feet
- Storage Area (50 feet x 5 feet)
 - ± 275 square feet
- Restaurant (40 feet x 42 feet)
 - $\pm 1,680$ square feet ground floor
 - $\pm 4,055$ total square feet

Possible Configurations

Permanent seating element

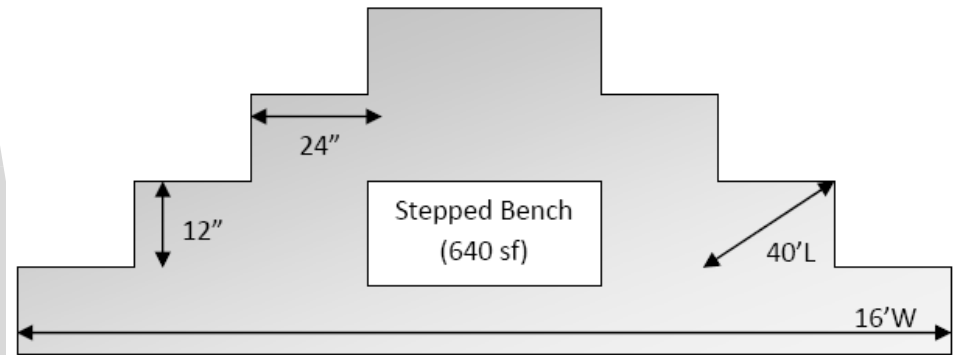
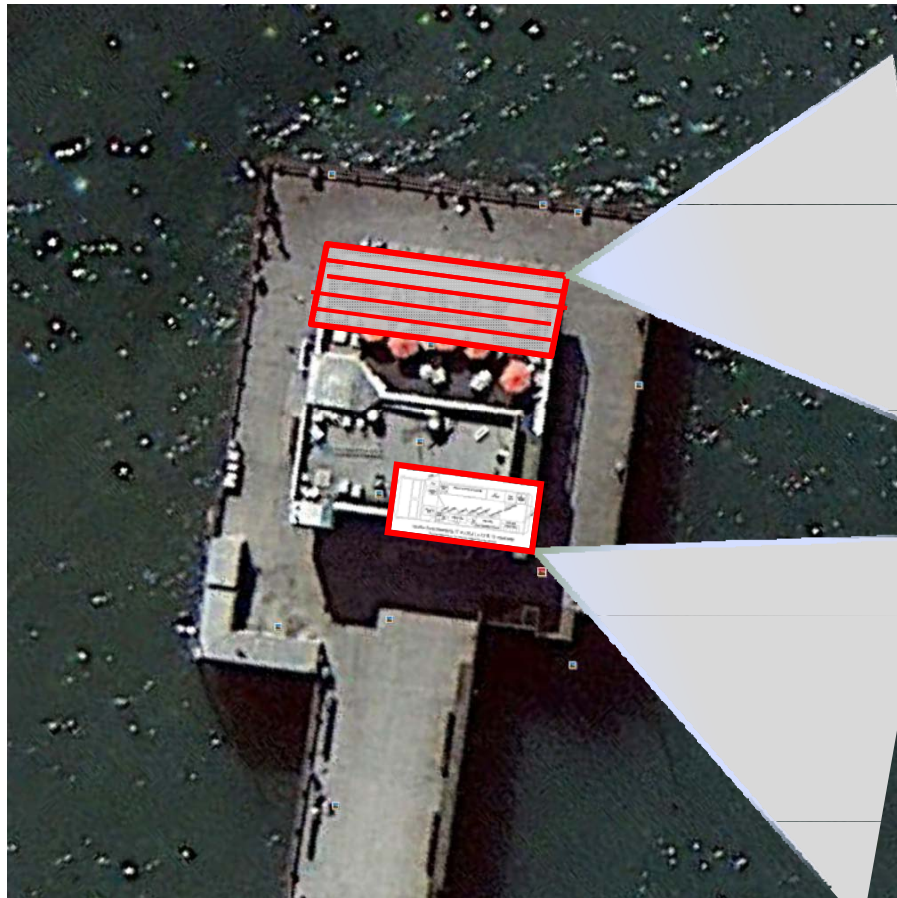


Special Event set-up

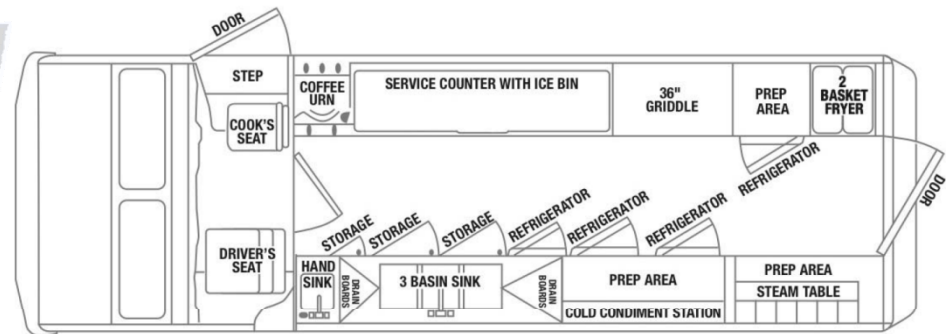


Possible Configurations

Permanent seating element



Food truck

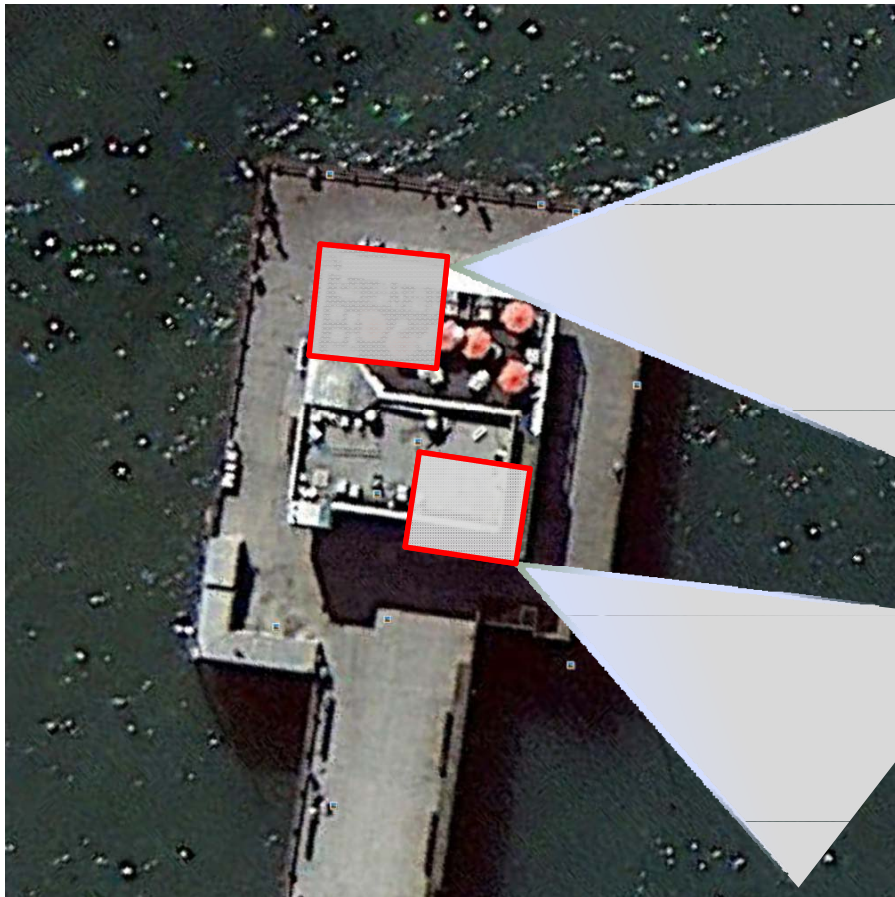


Location Truck Dimensions: 11' H x 24.4' L x 7.3' W, 13' wheel base

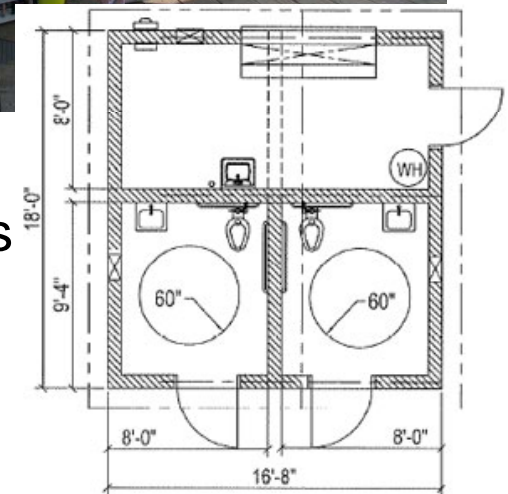
Electrical Requirements: 12V Batteries, Propane Generator, 30 Amps

Possible Configurations

Bait Shop

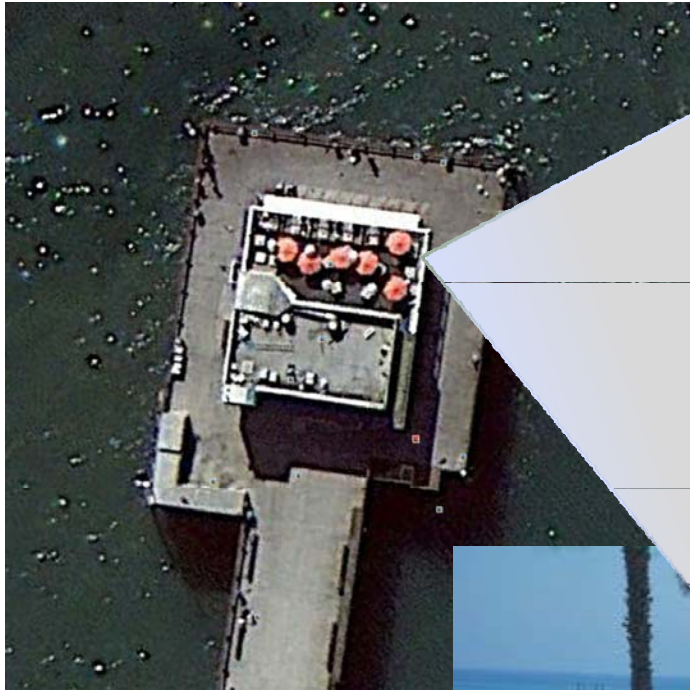


Public Restrooms



Possible Configurations

Special Events



Coastal Commission



- Receptive to removal of building; Coastal Development Permit required.
- Initial concern to maintain public access to Pier end at all times, even during special events.

Possible Options

- Prior to pursuing the removal of the restaurant:
 - Issue Request For Proposals for restaurant tenants to determine:
 - Interest
 - Scope of City contribution

Questions?