

TOP 10 COMMUNITY DESIRES

#

What we heard...

Potential Solutions

S

1

Improve walkability and pedestrian safety

- Widen sidewalks
- Enhance crosswalks
- Bulbouts



2

Improve bicycle safety

- Sharrows - Monrovia Avenue, 16th Street, 15th Street
- Painted lanes



3

Address high speeds on roadways

- Explore vehicle improvements
- Landscape medians



4

Streetscape beautification

- Additional landscaping amenities ⁵⁶ ⁷ and lighting ⁸
- Improved maintenance program



5

Increased shade and more street trees

- Install low water use canopy trees



6

Remove turf and replace with low water use planting

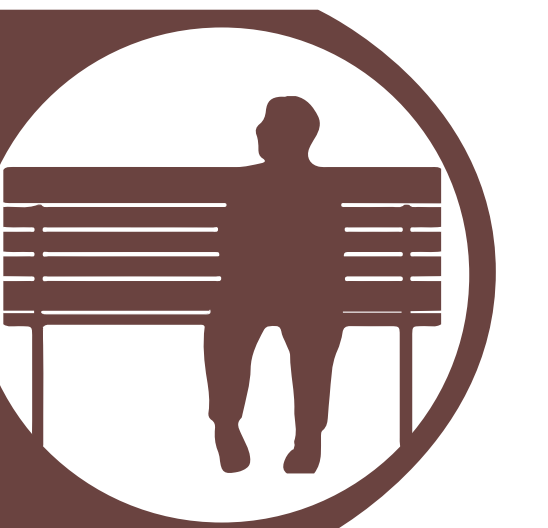
- Install native, drought tolerant plants



7

Increase street amenities and create gathering spaces

- Benches, bike racks, pet waste stations, trash and recycling receptacles



8

Increase visibility and need for lighting

- Monrovia Avenue, 16th Street, Production Place, 15th Street



9

Improve parking availability

- Shared parking programs
- Street permit parking



10

Address drainage issues on Production Place

- Stormwater runoff analysis



Potential Solutions and Concepts



What do you like?

SITE FURNISHINGS

OPTION A



OPTION B



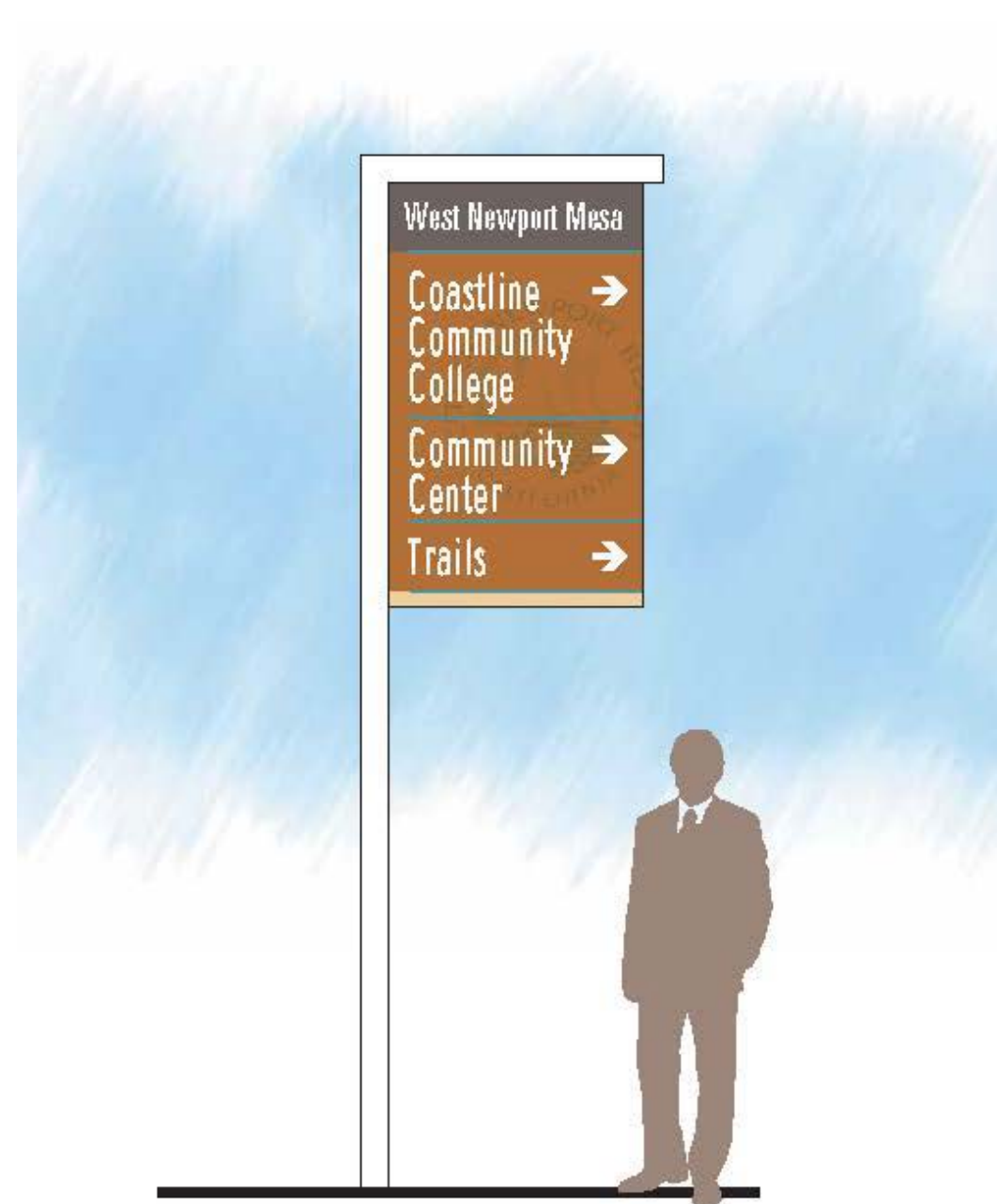
OPTION C



WAYFINDING



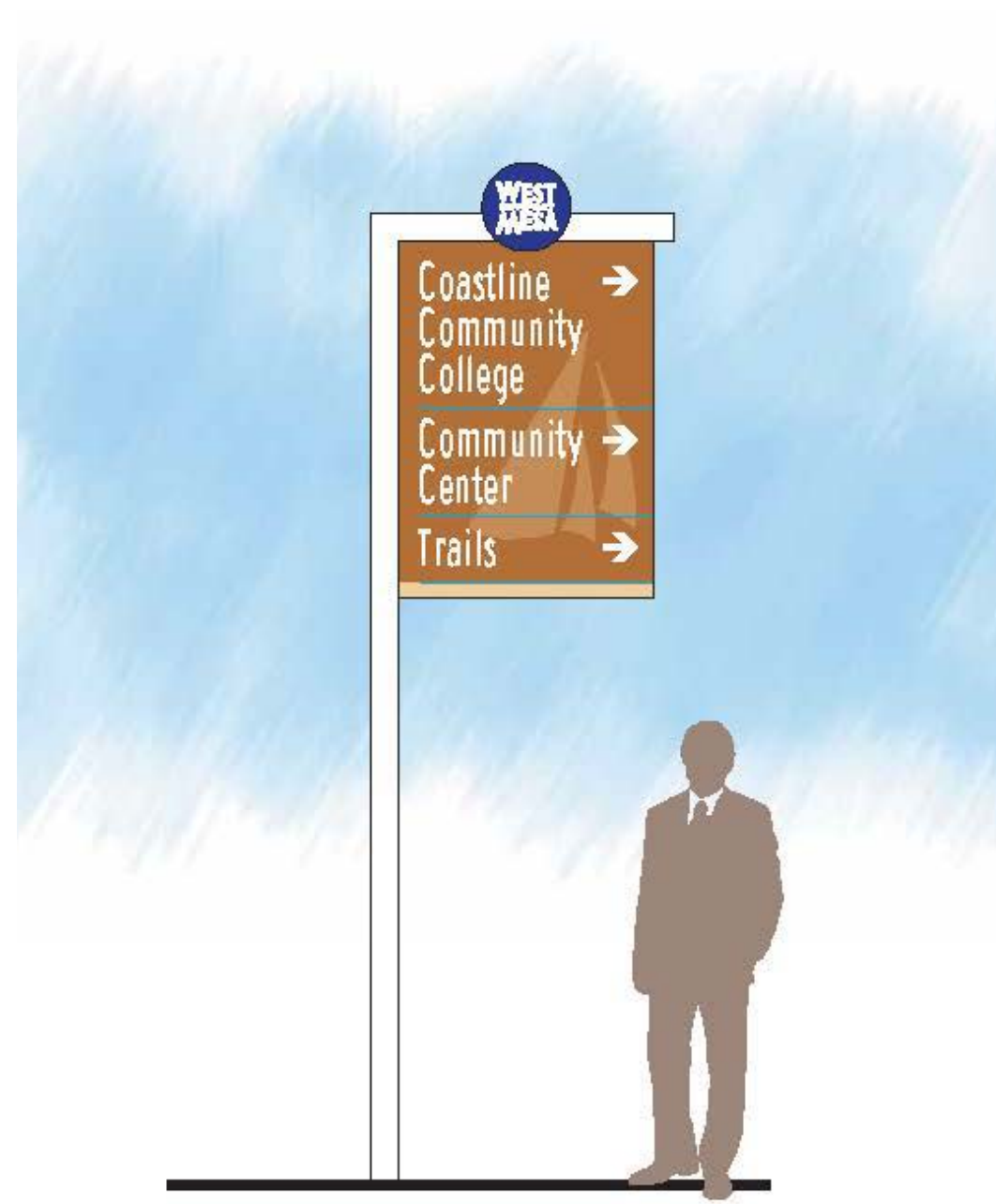
VEHICULAR DIRECTIONAL SIGN - OPTION 2
SCALE: 1/2"=1'-0"



VEHICULAR DIRECTIONAL SIGN - OPTION 1
SCALE: 1/2"=1'-0"

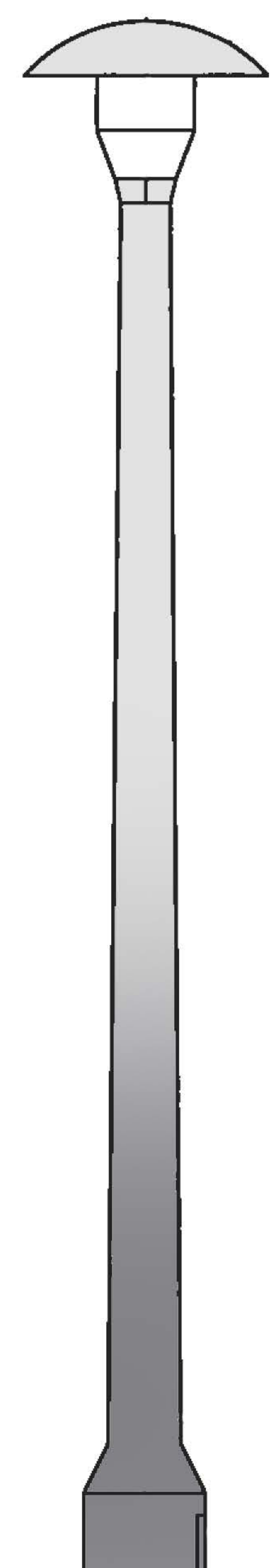
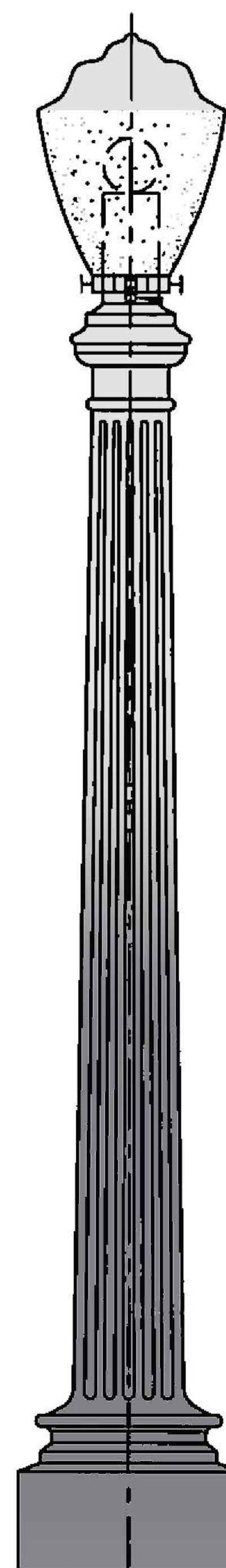


VEHICULAR DIRECTIONAL SIGN - OPTION 3
SCALE: 1/2"=1'-0"



VEHICULAR DIRECTIONAL SIGN - OPTION 4
SCALE: 1/2"=1'-0"

LIGHTING



What do you like?

TREE PALETTE

SMALL TREES



Agonis flexuosa
Peppermint Tree



Arbutus unedo
Strawberry Tree

MEDIUM TO LARGE TREES



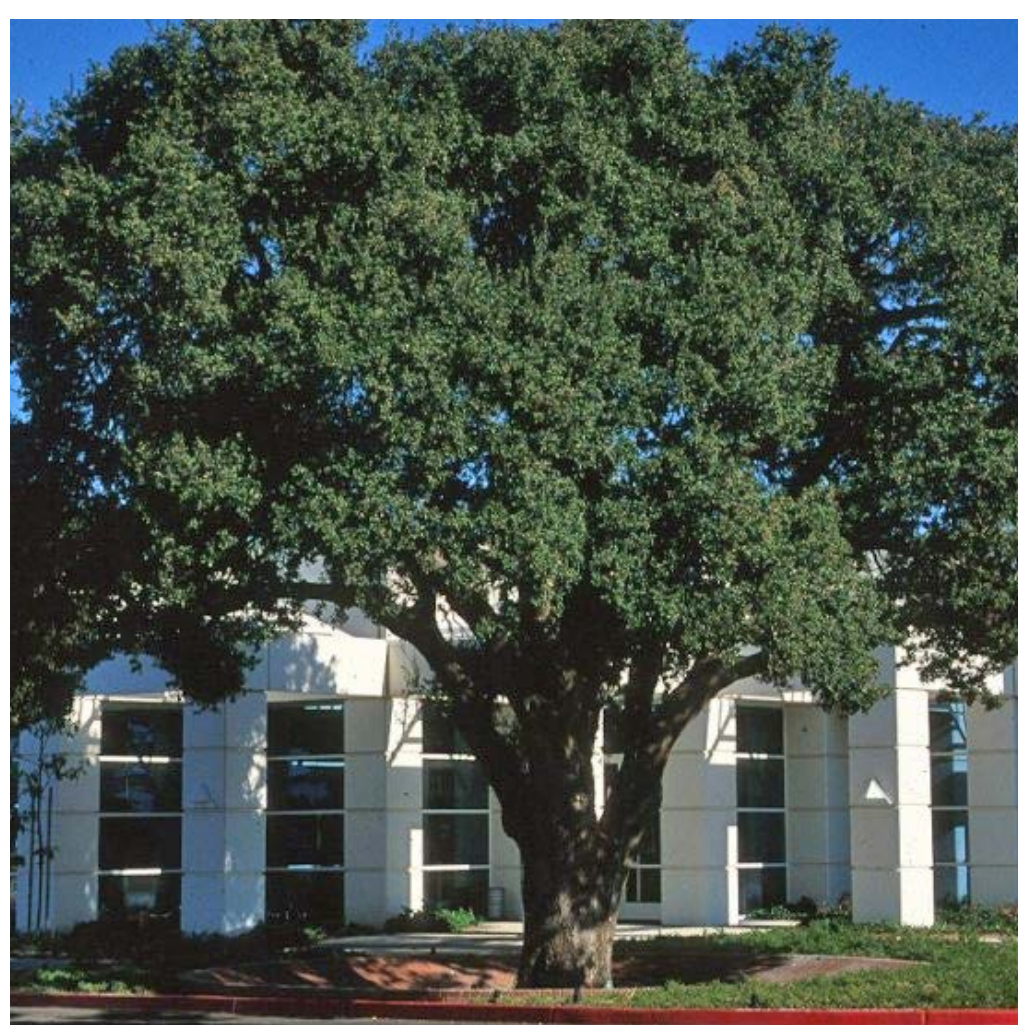
Koelreuteria paniculata
Golden Rain Tree



Metrosideros excelsa
New Zealand Christmas Tree



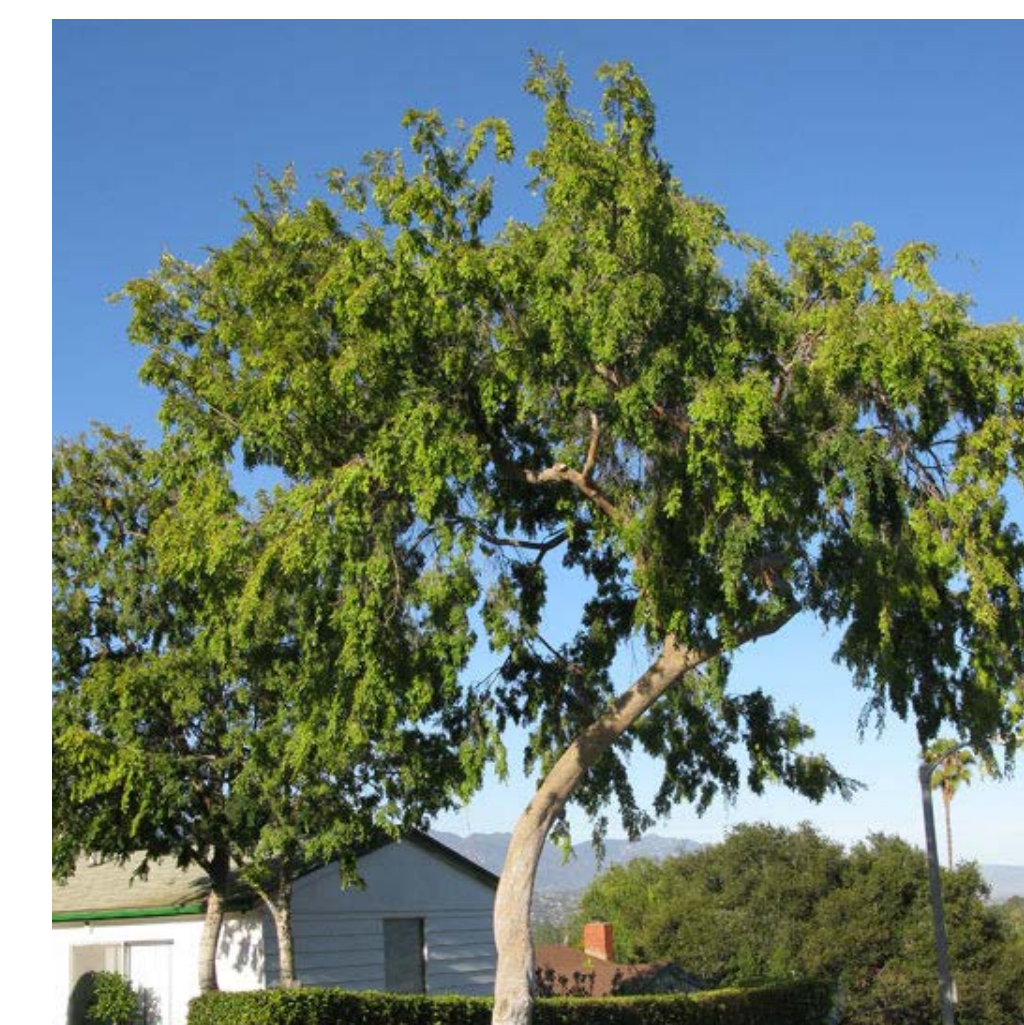
Platanus racemosa
California Sycamore



Quercus agrifolia
Coast Live Oak



Tipuana tipu
Tipu Tree



Ulmus parvifolia
Chinese Elm

ADDITIONAL TREES

Albizia julibrissin
Silk Tree

Arbutus 'Marina'
Arbutus

Bauhinia variegata
Purple Orchid Tree

Laurus nobilis 'Saratoga'
Saratoga

Lophostemon confertus
Brisbane Box

Magnolia grandiflora 'Little Gem'
Little Gem Magnolia

Phoenix dactylifera
Date Palm

Syagrus romanzoffiana
Queen Palm

SHRUB AND GROUNDCOVER PALETTE

LARGE SHRUBS



Agave americana
Blue Agave



Cistus purpureus
Purple Rockrose



Muhlenbergia rigens
Deer Grass



Trichostema lanatum
Woolly Blue Curls

SMALL SHRUBS AND GROUNDCOVERS



Agave parryi
Parry's Agave



Arctostaphylos edmundsii
Manzanita



Carex praegracilis
California Field Sedge



Senecio serpens
Blue Chalk Sticks

ADDITIONAL SHRUBS AND GROUNDCOVER

Anigozanthos flavidus
Kangaroo Paw

Bougainvillea spp.
Bougainvillea

Carissa macrocarpa
Natal Plum

Festuca idahoensis
Idaho Fescue

Mimulus cardinalis
Scarlet Monkey Flower

Rosmarinus officinalis
Rosemary

Salvia leucantha
Mexican Sage Bush

Salvia clevelandii
Cleveland Sage

IMPLEMENTATION EXAMPLE | PLACENTIA

What we heard...

Potential Solutions



Improve bicycle safety

- Widen sidewalks
- Enhance crosswalks
- Bulbouts



Improve bicycle safety

- Sharrows - Monrovia Avenue, 16th Street, 15th Street
- Painted lanes



Address high speeds on roadways

- Explore vehicle improvements
- Landscape medians



Streetscape beautification

- Additional landscaping and amenities
- Improved maintenance program



Increased shade and more street trees

- Install low water use canopy trees



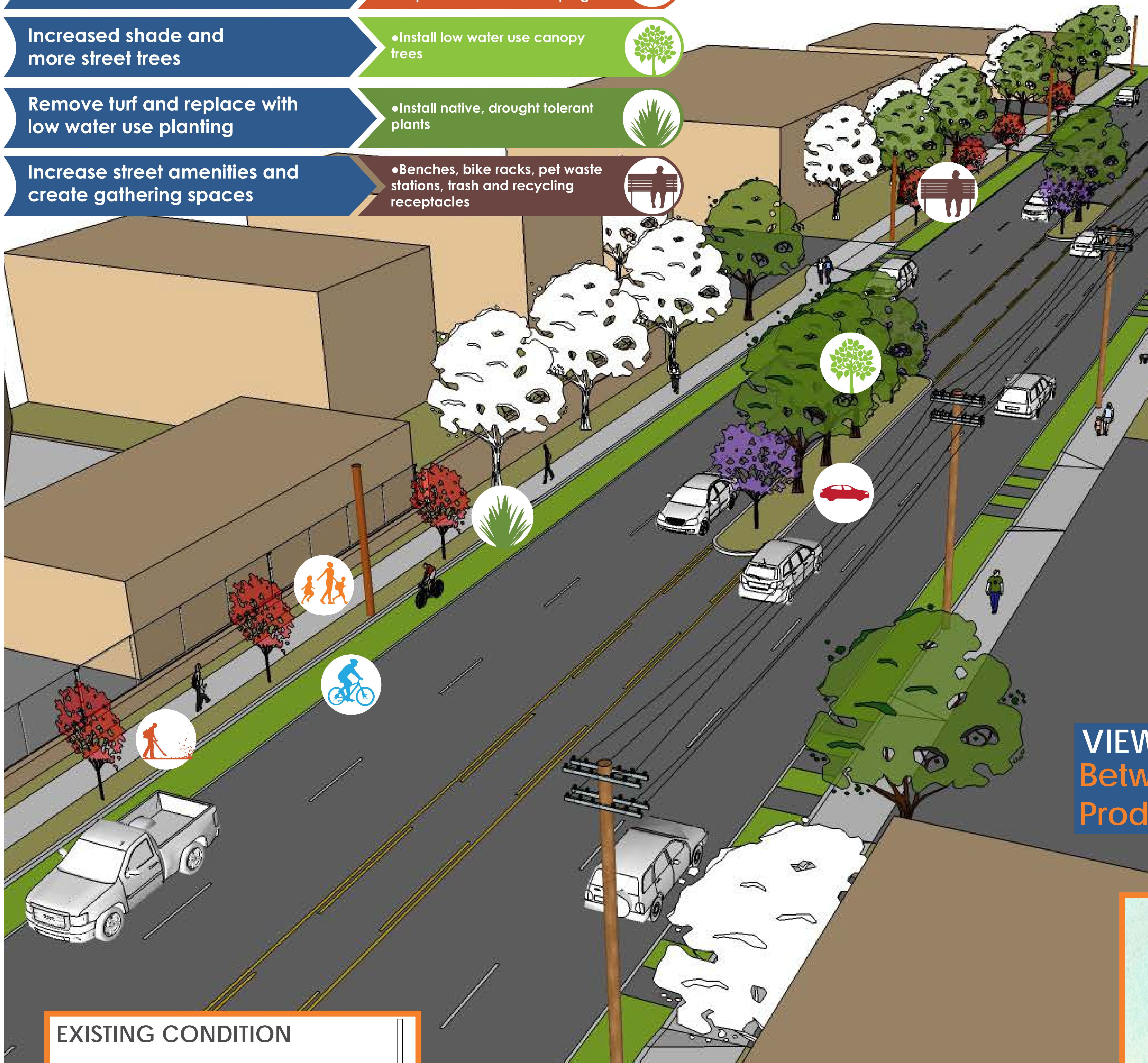
Remove turf and replace with low water use planting

- Install native, drought tolerant plants



Increase street amenities and create gathering spaces

- Benches, bike racks, pet waste stations, trash and recycling receptacles



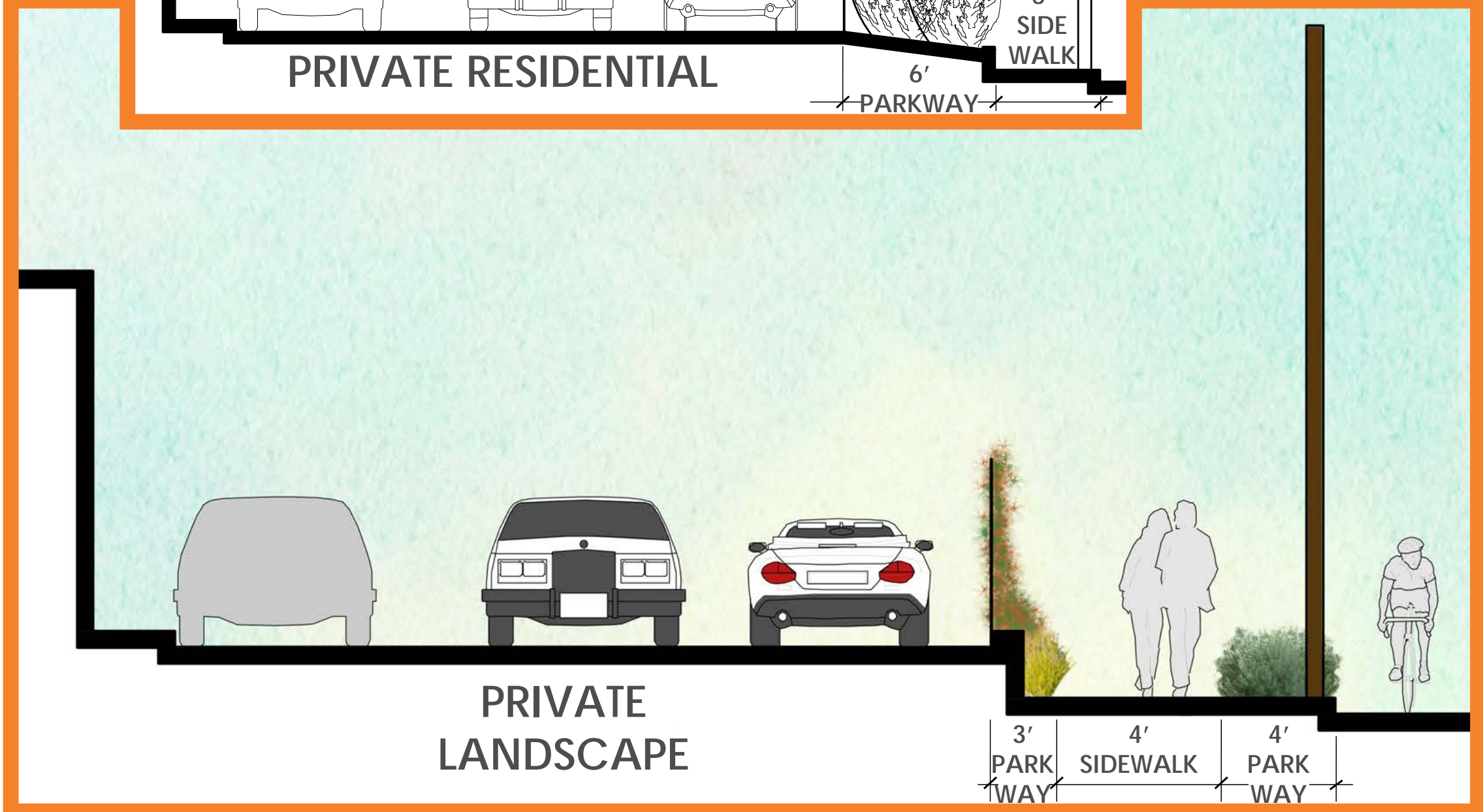
EXISTING CONDITION PHOTOS

VIEW
Between 15th Street and
Production Place Looking North

EXISTING CONDITION

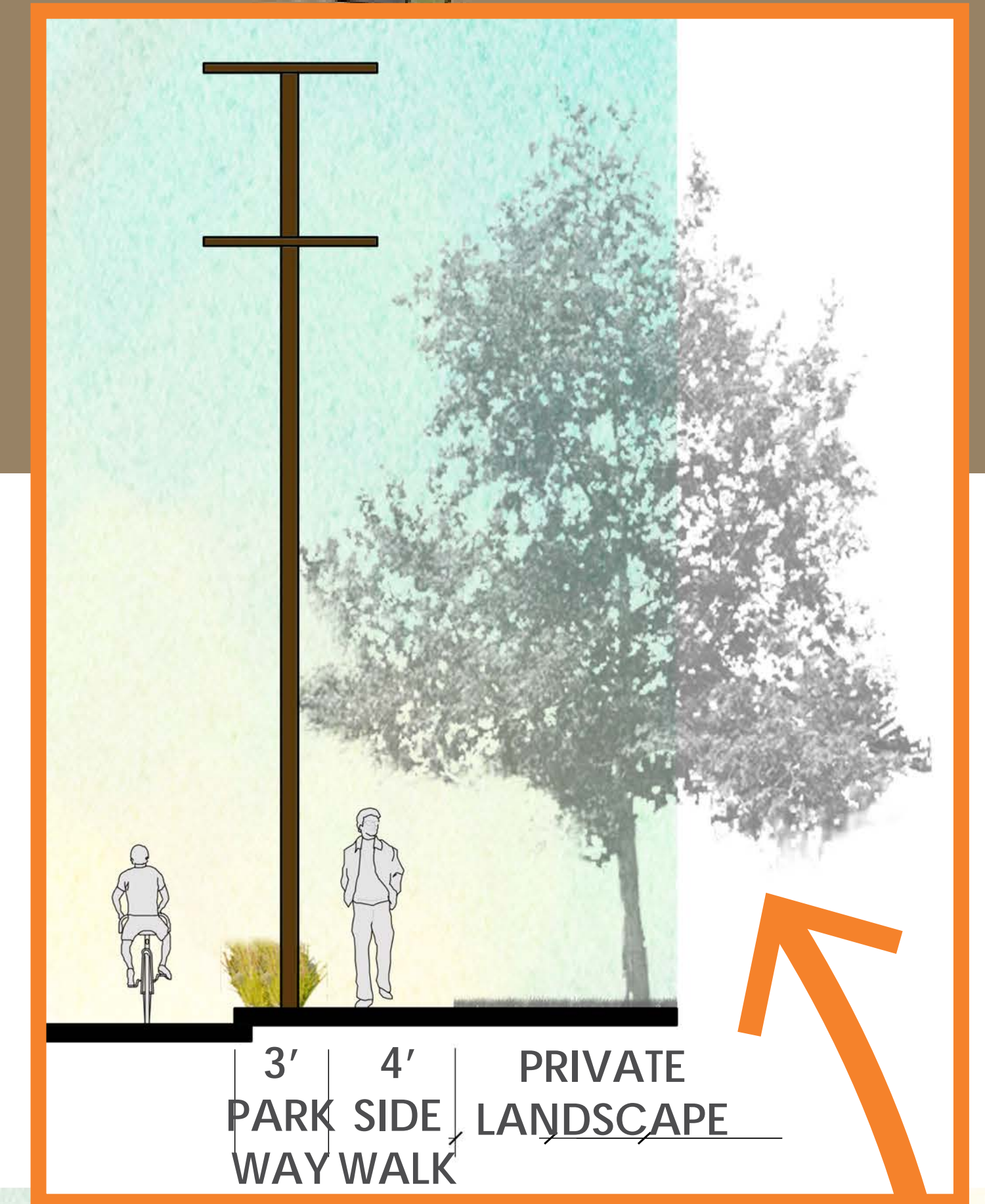


PRIVATE RESIDENTIAL



PRIVATE LANDSCAPE

ADJACENT TO NEWPORT TERRACE



ALTERNATE CONDITION

