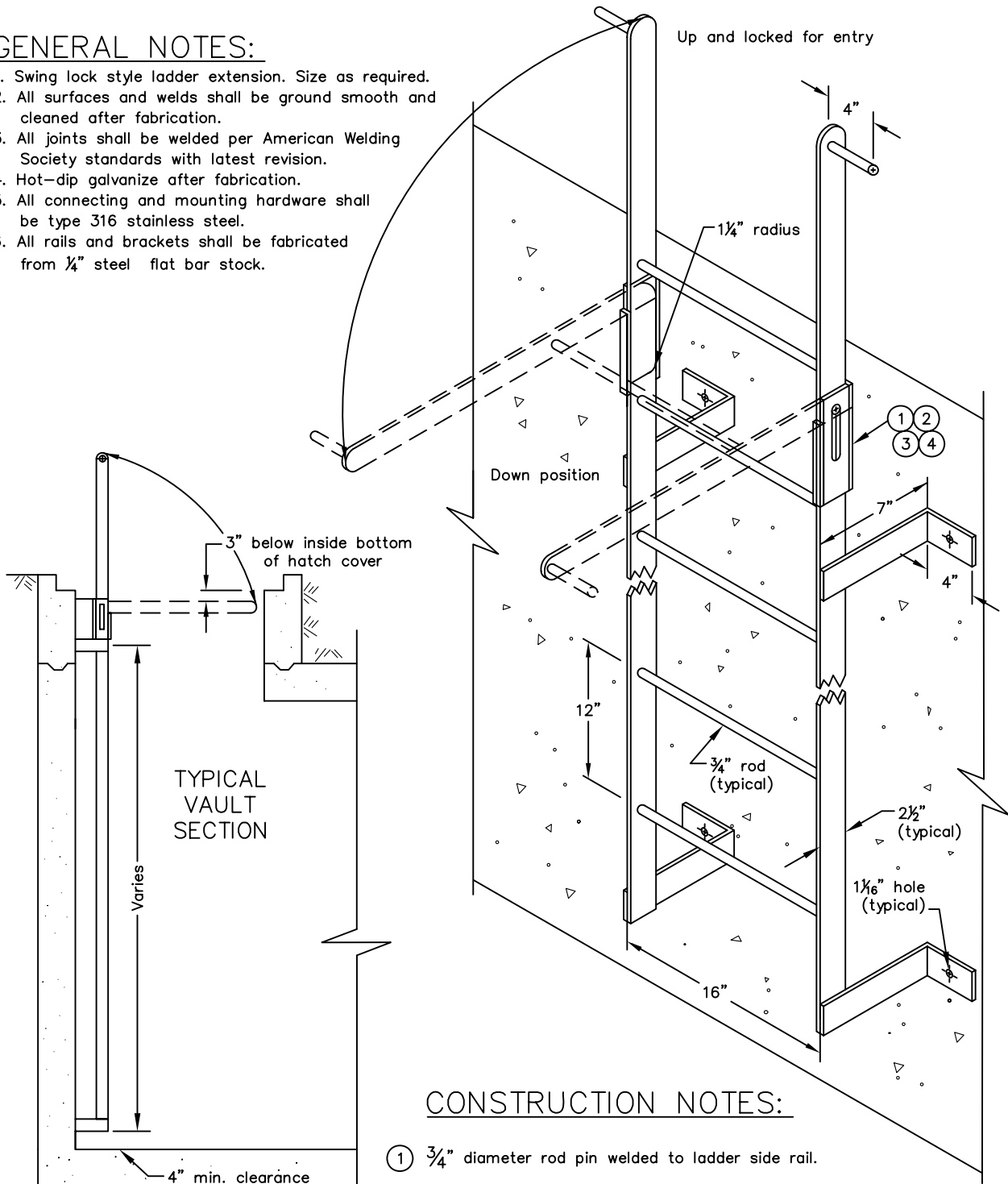


GENERAL NOTES:

1. Swing lock style ladder extension. Size as required.
2. All surfaces and welds shall be ground smooth and cleaned after fabrication.
3. All joints shall be welded per American Welding Society standards with latest revision.
4. Hot-dip galvanize after fabrication.
5. All connecting and mounting hardware shall be type 316 stainless steel.
6. All rails and brackets shall be fabricated from 1/4" steel flat bar stock.



CONSTRUCTION NOTES:

- ① 3/4" diameter rod pin welded to ladder side rail.
- ② 7/8" x 4" slot.
- ③ 8 1/2" x 5/8" side bar.
- ④ 6" x 5/8" side bar.

CITY OF NEWPORT BEACH
PUBLIC WORKS DEPARTMENT

APPROVED:

RCE NO. 36106

PUBLIC WORKS DIRECTOR

Drawn: M. Elias

Scale: N.T.S.

Date: Jan. 2004

FILED:SPW\Shared\CAD_STD Details\2003_Side STD Water

DRAWING NO.

STD-530-L

STANDARD VAULT LADDER