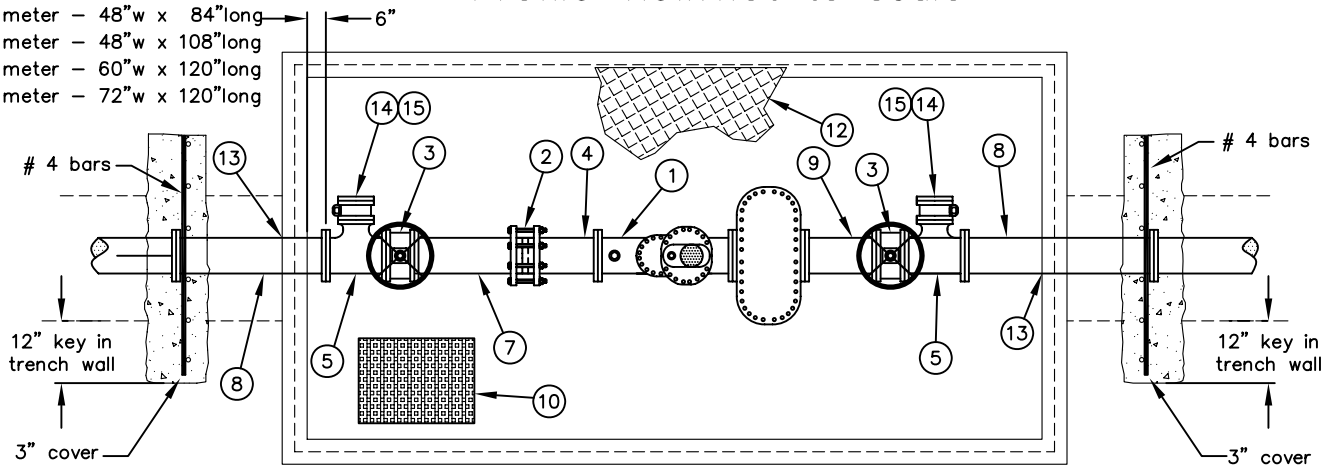


VAULT SIZING:

- minimum inside dimensions:
 3" meter - 48" w x 84" long
 4" meter - 48" w x 108" long
 6" meter - 60" w x 120" long
 8" meter - 72" w x 120" long

Profile View: not to scale



Plan View: not to scale

Construction Notes:

- ① Compact, single register, high performance, compound meter w/ attached in line meter strainer. Contact C.N.B. Utilities Dept. for specs. & approved manufacturers.
- ② Ductile iron flex coupling. Ford, Romac, Dresser or approved equivalent.
- ③ Resilient seated gate valve with hand wheel operator & flanged ends.
- ④ Class 52, mortar lined, D.I.P. spindle piece (FOE.) 12" long. Fabricate with harness lugs.
- ⑤ FE, compact (short body pattern), mortar lined ductile iron tee. Branch dia. to be 2" less than run dia. ie., 8" x 6" tee. To be replaced w/ 2" corp stop and saddle where main line is 4".
- ⑥ 8" thick concrete slab or precast concrete vault floor of equal specification. Reinforced with W1.4 x W1.4 weld wire mesh. Concrete shall be C-560-3250 mix. Vault manufacturer shall be as approved by C.N.B. Utilities Dept. Call 644-3011
- ⑦ Class 52, mortar lined, D.I.P. spindle piece (FOE.) 18" long. Fabricate integrally with harness assembly lugs.
- ⑧ Class 52, mortar lined, D.I.P. spool piece (FBE). 48" long.
- ⑨ Class 52, mortar lined, D.I.P. spool piece (FBE). 6" or 12" long.
- ⑩ Recessed cast iron sump grate. Alhambra Foundry or equivalent.
- ⑪ Adjustable steel pipe support, hot dip galvanized after fabrication per STD-522-L. Paint to match piping and valving.
- ⑫ Diamond plate aluminum cover. Spring assisted, two piece cover with locking, hinged, round meter reading lids centered over each meter. Special design required for traffic loading applications.
- ⑬ "Link-Seal" mechanical piping seal in annular space between pipe O.D. & cast-in-place water stop ring in vault opening or hydraulic cement with prior city approval.
- ⑭ 4" diameter resilient seated gate valve with buried service square operator nut and flanged ends.
- ⑮ 4" or proper size to valve blind flange. ANSI rated 125 lbs.

General Notes:

1. All above grade piping shall be painted with an Alkyd Enamel paint system consisting of a 2 mil primer coat and two (2) coats of 2 mils (each) high gloss enamel. Color shall be white, blue or red.
2. All below grade ductile iron fittings and piping shall be encased with an 8 mil polyethylene wrap in accord with the AWWA standards.
3. All flange joints shall be connected with type 316 stainless steel fasteners. Mechanical joint shall be joined with either malleable iron or self-weathering CorTen Steel.

CITY OF NEWPORT BEACH
PUBLIC WORKS DEPARTMENT

**WATER METER ASSEMBLY
(TURBINE METER)**

APPROVED:

RCE NO. 36106

PUBLIC WORKS DIRECTOR

Drawn: M. Elias

Scale: N.T.S.

Date: Jan. 2004

F:\USERS\PBW\Shared\CAD STD\STD Details\2003 - Std\STD Water

DRAWING NO.

STD-524-L