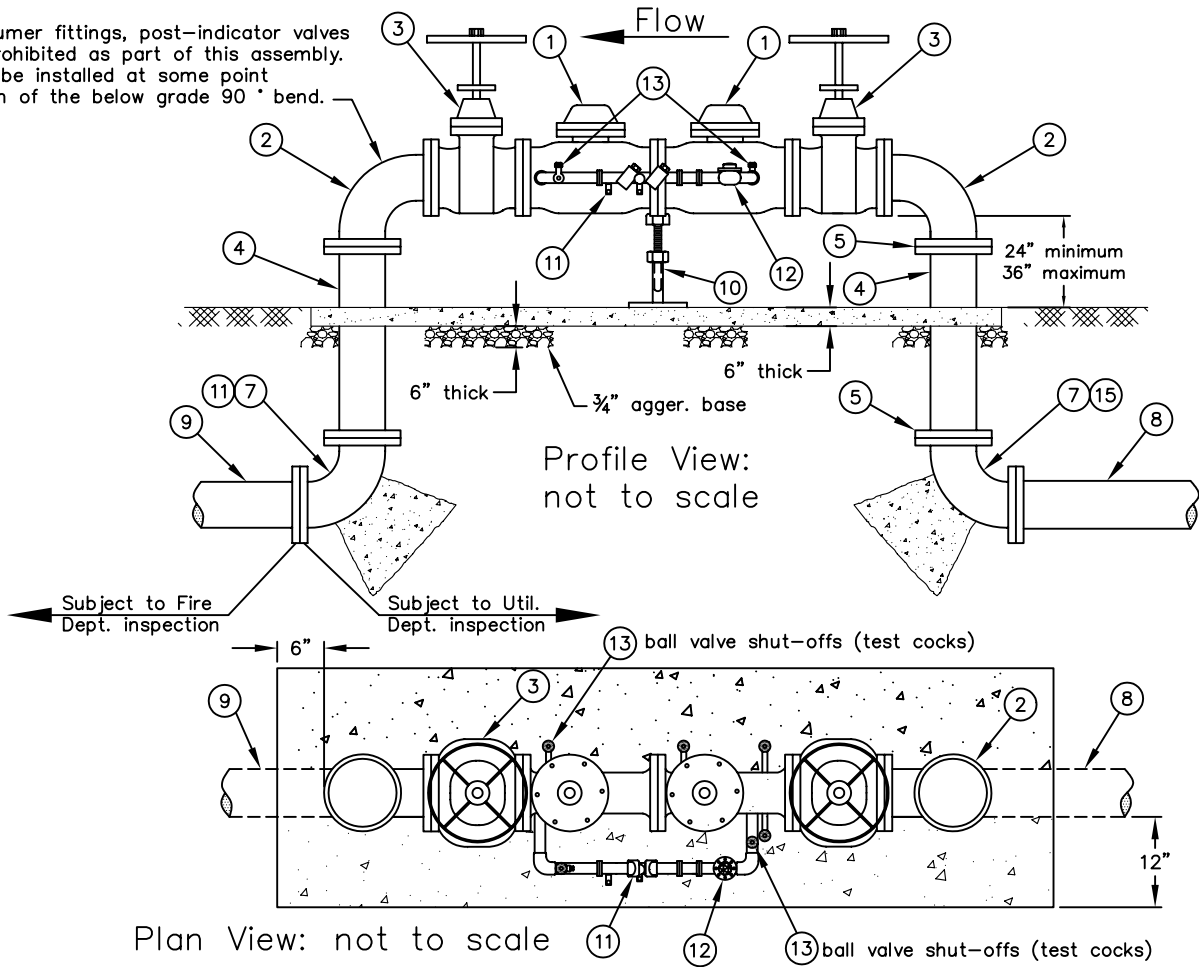


Siamese pumer fittings, post-indicator valves etc. are prohibited as part of this assembly. They shall be installed at some point downstream of the below grade 90° bend.



CONSTRUCTION NOTES:

- ① Approved double check valve assembly. Contact CNB Utilities Dept. (644-3011) for list.
- ② Long radius 90° bend, FEXFE, cement lined D.I.
- ③ Resilient wedge gate valve, OS & Y w/flanged ends.
- ④ D.I.P. mortar lined spool piece (FE).
- ⑤ 150 lb. ANSI rated flange. Fabricated integrally with spool.
- ⑥ 6" thick concrete slab. Reinforced with W1.4 x W1.4 weld wire mesh. Concrete shall be C-560-3250 mix.
- ⑦ Long radius 90° bend, cement lined D.I., FE x FE or FE x MJ ends w/ retainer glands.
- ⑧ City supply pipe. Class 52 mortar lined pipe w/ polyethylene encasement or 150 (200 where applicable) asbestos cement pipe.
- ⑨ Consumer piping AWWA approved potable water pipe material, class 150 or higher.
- ⑩ Adjustable steel pipe support, hot dip galvanized after fabrication per STD-522-L. Paint to match piping and valving.
- ⑪ Bypass double, spring loaded, poppet check valve assembly with multiple test cocks.
- ⑫ Assembly must be matched to the main line assembly to provide lower head loss.
- ⑬ Magnetic drive, low head loss, bypass meter capable of reading flows from 1/4 to 20 gpm. Register shall record flows in units of cubic feet.
- ⑭ Bronze body, rubber seated ball valve shut-off with lever operator.
- ⑮ Install thrust block per STD-510-L-A.

GENERAL NOTES:

- 1. All above grade piping shall be painted with an Alkyd Enamel paint system consisting of a 2 mil primer coat and two (2) coats of 2 mils (each) high gloss enamel. Color shall be white, blue, red, or green.
- 2. All below grade ductile iron fittings and piping shall be encased in accord with AWWA standard in an 8 mil polyethylene wrap.
- 3. All flange bolts shall be type 316 stainless steel. Mechanical joint bolts shall be manufactured from either malleable iron or self-weathering CorTen Steel.
- 4. Back flow device shall be installed in easement granted to City. Minimum size is 5' wide x 10' long.

CITY OF NEWPORT BEACH
PUBLIC WORKS DEPARTMENT

**Double Check Detector
Backflow Prevention Assembly**

APPROVED:

RCE NO. 36106

PUBLIC WORKS DIRECTOR

Drawn: M. Elias

Scale: N.T.S.

Date: Jan. 2004

F:\USERS\PBW\Shared\CAD_STD\STD Details\2003_Std\STD Water

DRAWING NO.

STD-517-L