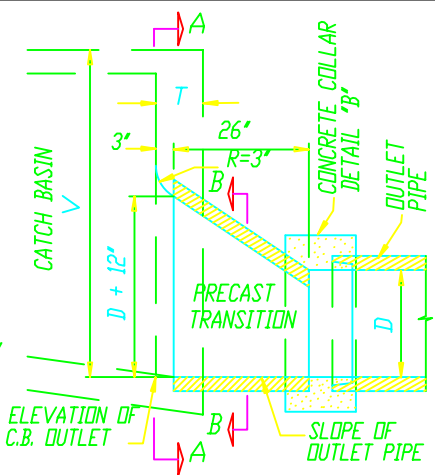
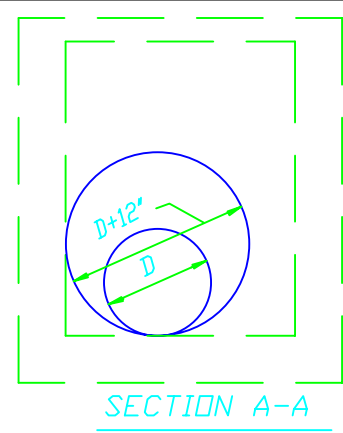


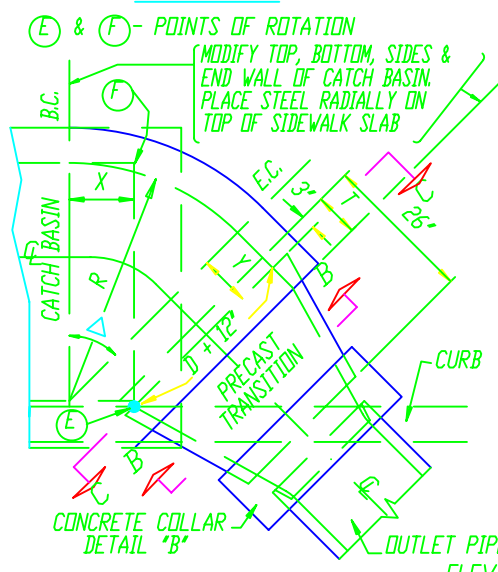
PLAN



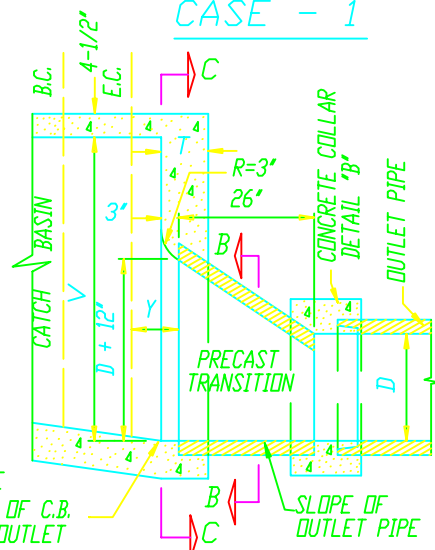
E PROFILE  
CASE - 1



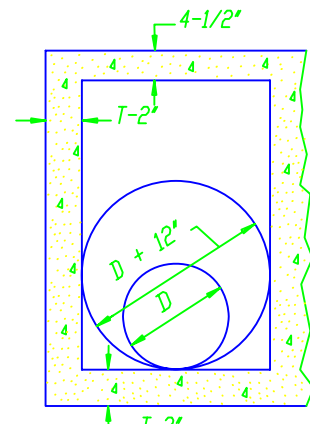
SECTION A-A



PLAN

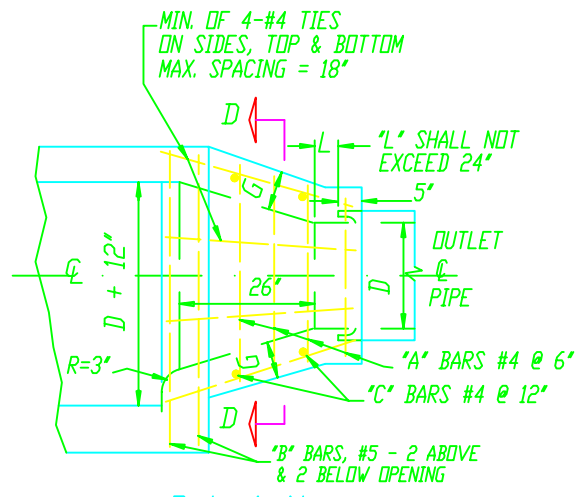


E PROFILE  
CASE - 2



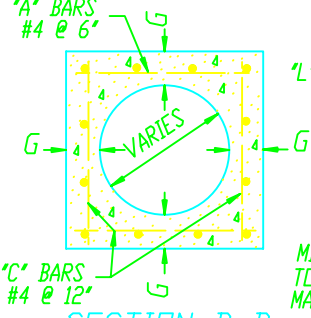
SECTION C-C  
TABLE - A

D	Δ	R	X	Y
18"	30°	38"	16"	13-7/8"
18"	45°	38"	11-3/8"	8"
21"	30°	38"	10"	8-5/8"
21"	45°	38"	7-1/8"	5"
24"	30°	38"	4"	3-1/2"
24"	45°	38"	2-7/8"	2"
27" OR MORE	30°	D+12"	0"	0"
	45°	D+12"	0"	0"



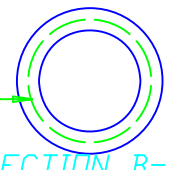
PLAN  
STEEL REINFORCING

D	18"	21"	24"	27"	30"
G	7"	7"	7-1/2"	8"	8"



SECTION D-D

PRECAST TRANSITION SHALL BE REINFORCED FOR (1250-D) FOR D+12 R.C.P.



SECTION B-B

DETAIL A

DETAIL B

FOR NOTES SEE STD.-302-L-B MONOLITHIC TRANSITION

ADOPTED FROM CITY OF LOS ANGELES STD. PLAN B-3649

SQUARE CONCRETE COLLAR

REV. 9/93

CITY OF NEWPORT BEACH  
PUBLIC WORKS DEPARTMENT

CURB INLET BASIN  
OUTLET TRANSITION STRUCTURE

APPROVED:

DIRECTOR OF PUBLIC WORKS  
R.C.E. NO. 36106

DATE	4 Mar 1994	SCALE	N.T.S.
DRAWN	M. GRACIA	STD-302-L-A	