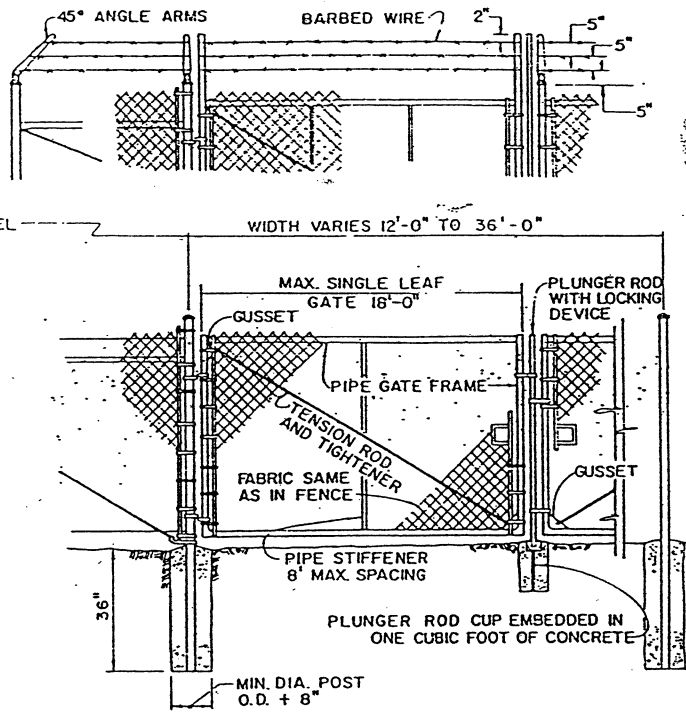
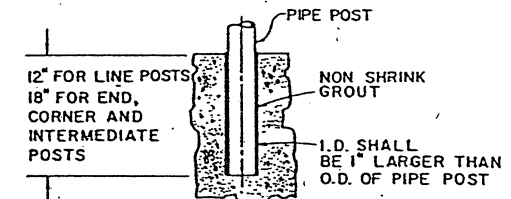


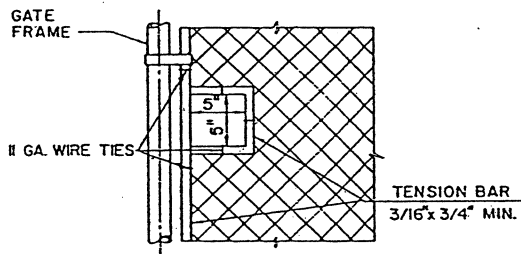
TYPICAL WALK GATE



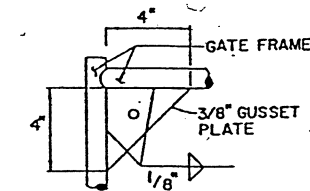
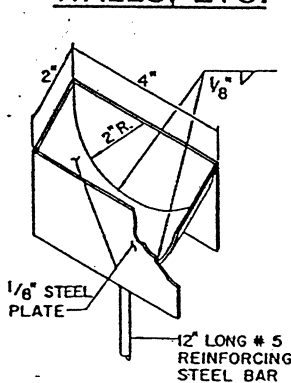
TYPICAL DRIVE GATE



POST EMBEDMENT DETAIL IN CONCRETE HEADWALLS, RETAINING WALLS, CHANNEL WALLS, ETC.



DETAIL OF CUT-OUT FOR CHAIN AND LOCK



GUSSET DETAIL

PLUNGER ROD CUP DETAIL

NOTES:

- 1 SECURE DRIVE FIT GALVANIZED CAP TO POST WITH 1/4" ROUND HEAD RIVET.
- 2 H DENOTES FABRIC WIDTH AND NOMINAL FENCE HEIGHT. H SHALL BE 5'-0" UNLESS OTHERWISE SPECIFIED.
- 3 IF CHAIN LINK FENCE WITH TOP RAIL IS SPECIFIED, DELETE STEEL TENSION WIRE AT THE TOP AND THE PIPE RAILS AT INTERMEDIATE, END AND CORNER POSTS. EXTEND TENSION ROD TO THE TOP RAIL.
- 4 BARBED WIRE SHALL BE USED ONLY WHEN SPECIFIED.
- 5 ALL DATA SHOWN ON TYPICAL DETAILS SHALL BE APPLICABLE TO OTHER PERTINENT DETAILS.

ADOPTED FROM AMERICAN PUBLIC WORKS ASSOCIATION STANDARD PLAN 600-0

CITY OF NEWPORT BEACH
PUBLIC WORKS DEPARTMENT

CHAIN LINK FENCE AND GATES

DRAWN F.T. DATE 1/15/91

APPROVED

[Signature]
PUBLIC WORKS DIRECTOR
P.E. NO. 36106

DRAWING NO. STD-230-L-B