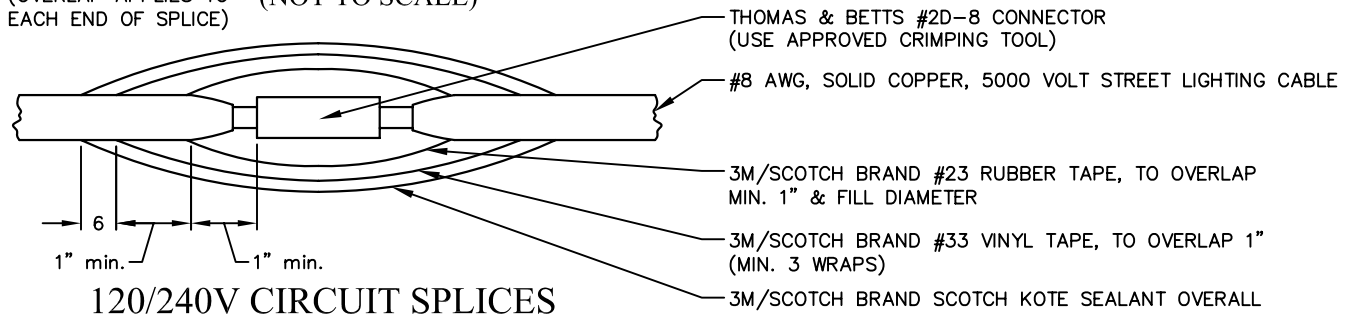


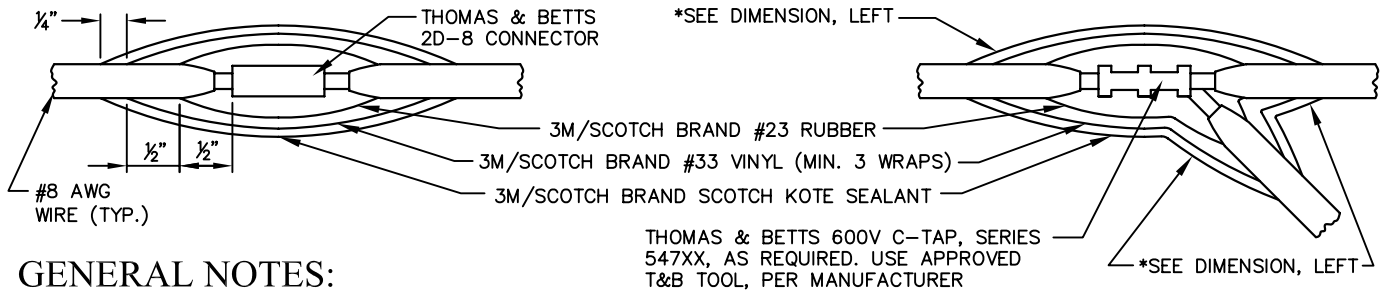
CIRCUIT SPLICES SERIES (5KV)

(OVERLAP APPLIES TO EACH END OF SPLICE)

(NOT TO SCALE)

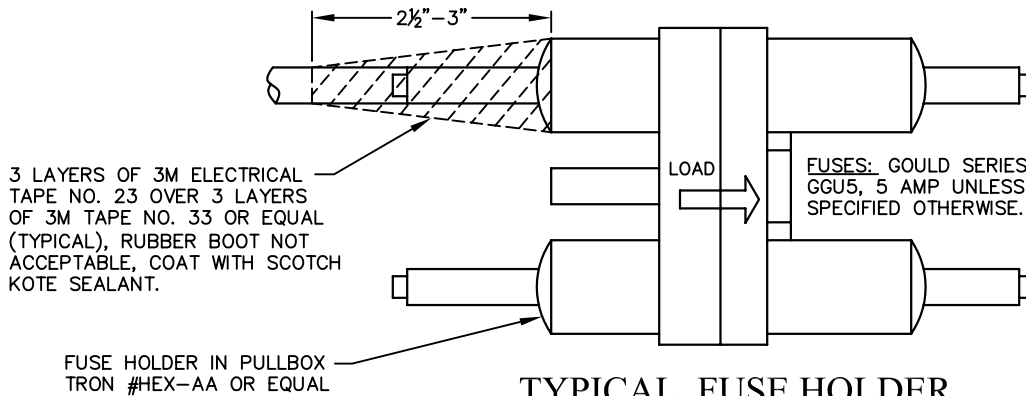


120/240V CIRCUIT SPLICES



GENERAL NOTES:

1. All phase conductors shall be stranded copper, THWN, identified by a continuous, distinct, color-coded insulation.
2. Circuit pairs for 240V conductors shall be of two distinct colors, continuously traceable from luminaire to circuit breaker.
3. With the exception of the first, 2" diameter conduit from the service cabinet to the first adjacent pullbox, no conductor insulation-color shall be duplicated in any conduit run. Wires of different AWG sizes may repeat colors in the same conduit run.
4. Circuit grounds shall be #8 AWG bare, solid copper, spliced using Thomas & Betts 'C-Tap's as shown, above. Ground conductors to luminaires may be reduced as per specification on CNB STD-205-L, BELOW.
5. Gray (277V), White, or White with color-stripped insulation shall be used only for the neutral, or grounded-conductor.



TYPICAL FUSE HOLDER

LUMINAIRE & LOAD-SIDE OF FUSE HOLDER COPPER CONDUCTOR SIZING

STANDARD	PHASE CONDUCTOR	GROUND CONDUCTOR*
STD-200-L	#10 THWN STRANDED	#12 THWN, Solid or Stranded
STD-201-L	#12 THWN STRANDED	#12 THWN, Solid or Stranded
STD-202-L-A	#12 THWN STRANDED	#12 THWN, Solid or Stranded
STD-202-L-B	#12 THWN STRANDED	#12 THWN, Solid or Stranded
STD-203-L	#10 THWN STRANDED	#12 THWN, Solid or Stranded

*NOTE:

Terminate ground conductor in fixture using appropriate Thomas & Betts 'Sta-kon' brand, Series 'C10', non-insulated fork terminal.

CITY OF NEWPORT BEACH
PUBLIC WORKS DEPARTMENT

CIRCUIT SPLICING, FUSE HOLDER & WIRING DETAILS

APPROVED:

RCE NO. 36106

PUBLIC WORKS DIRECTOR

Drawn: M. Elias

Scale: N.T.S.

Date: Jan. 2004

F:\USERS\PBW\Shared\CAD STD\STD Details\2003_Std\STD_SrLight

DRAWING NO.

STD-205-L