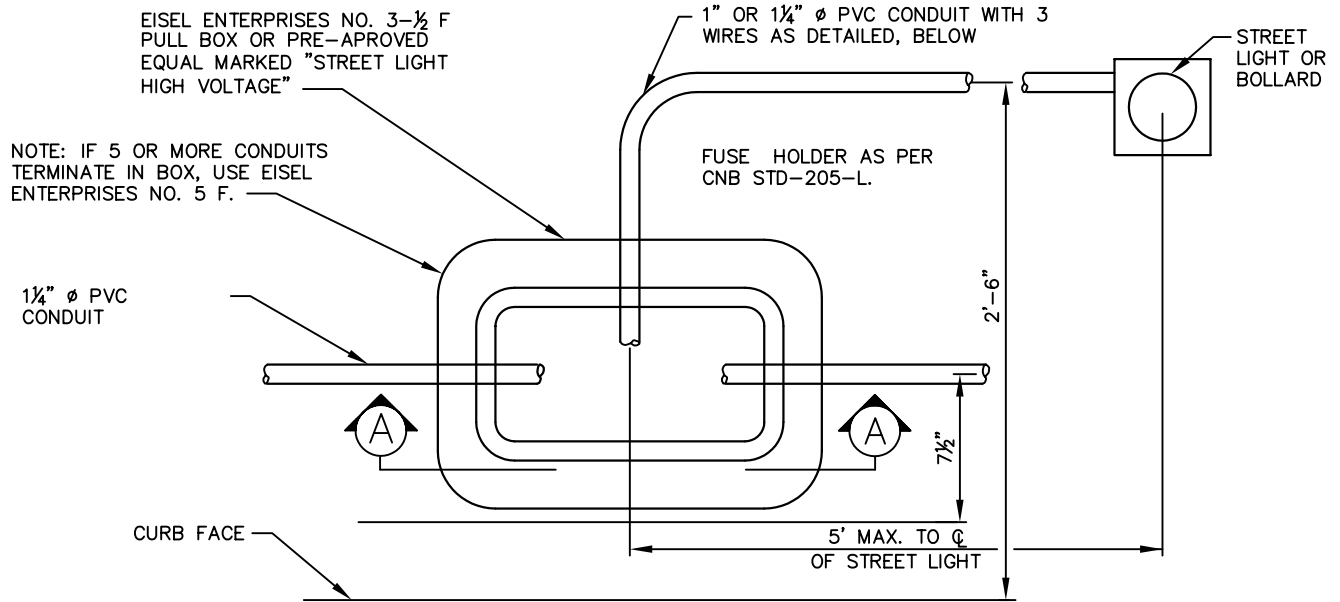


**SECTION A-A**



**TYPICAL PULL BOX REQUIRED AT EACH LIGHT STANDARD**

**NOTES:**

1. ALL CONDUIT SHALL BE 1/4" DIA. P.V.C., SCHEDULE 40, UNLESS SPECIFIED OTHERWISE, PER PLAN.
2. SEE CNB STD-205-L FOR FUSE HOLDER & WIRING DETAILS.
3. AFTER CONDUCTORS ARE INSTALL, ALL CONDUIT ENDS SHALL BE SEALED WITH DUCT SEAL OR PRE-APPROVED EQUAL.
4. NO CONDUIT RUN SHALL BE GREATER THAN 180' BETWEEN PULL BOXES.
5. PULL BOXES SHALL NOT BE INSTALLED IN DRIVEWAYS, RAMPS OR BETWEEN THE B.C.R. & E.C.R.

**CITY OF NEWPORT BEACH  
PUBLIC WORKS DEPARTMENT**

**PULL BOX DETAILS**

**APPROVED:**



RCE NO. 36106

**PUBLIC WORKS DIRECTOR**

Drawn: M. Elias

Scale: N.T.S.

Date: Jan. 2004

FSUSERS\PBW\Shared\CAD\_STD\STD\_Details\2003\_Std\STD\_SrLight

**DRAWING NO.**

**STD-204-L**