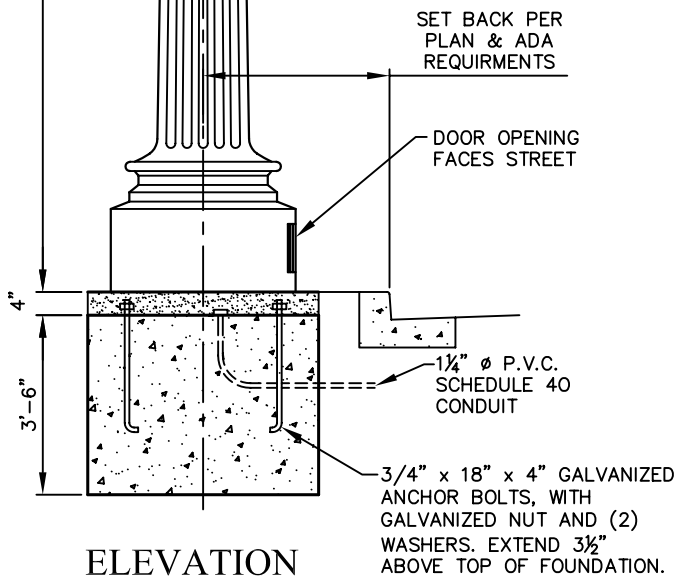


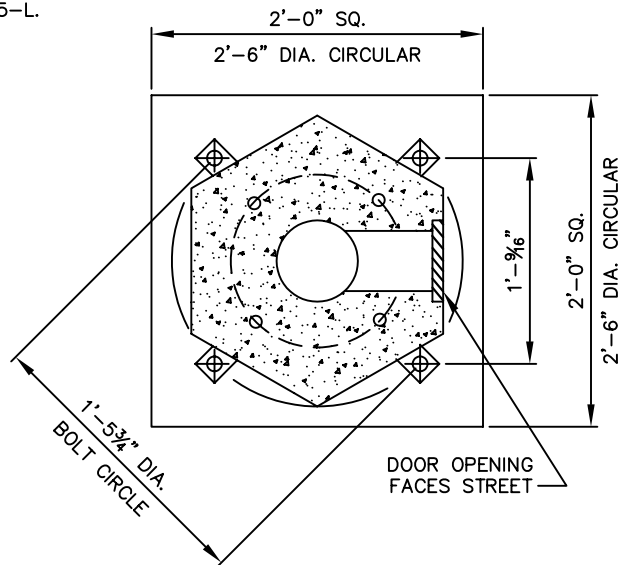
**LEVELING DETAIL**

**NOTES:**

1. ALL BASES SHALL BE POURED TO 4" BELOW SIDEWALK GRADE, TO ALLOW FOR GROUT.
2. 2'-6" DIA. CIRCULAR FOUNDATION MAYBE USED IN PLACE OF 2'-0" SQ. FOUNDATION.
3. THE AREA AROUND ALL STANDARDS SHALL BE FORMED AND POURED WITH GROUT TO EXTEND 6" ON EACH SIDE AND BACK OF STANDARD AND FROM BACK OF CURB TO FRONT OF STANDARD. GROUT SHALL BE POURED FROM TOP OF BASE TO SIDEWALK GRADE. GROUT SHALL CONSIST OF 2 PARTS SAND AND 1 PART CEMENT.
4. EACH POLE SHALL HAVE AN ADJACENT PULL BOX. SEE STD-204-L.
5. FUSE HOLDER SHALL BE LOCATED IN PULL BOX, SEE STD-205-L.
6. ALL THREADED CONNECTIONS SHALL HAVE PRE-APPROVED ANTI-SEIZE COMPOUND.
7. SEE POLE LEVELING DETAIL ABOVE.
8. FOR POLE WIRING, SEE CNB STD-205-L.



**ELEVATION**



**BASE DETAIL**

**CITY OF NEWPORT BEACH**  
PUBLIC WORKS DEPARTMENT

**LIGHTING STANDARD**  
**TYPE V**

APPROVED:

PUBLIC WORKS DIRECTOR

RCE NO. 36106

Drawn: M. Elias

Scale: N.T.S.

Date: Jan. 2004

F:\USERS\PBW\Shared\CAD\STD\STD Details\2003\_Std\STD SCLight

DRAWING NO.

**STD-202-L-A**