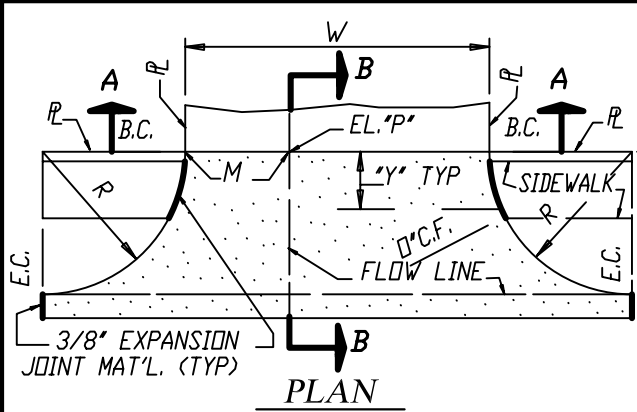
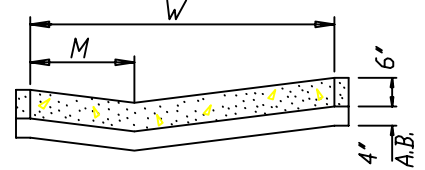


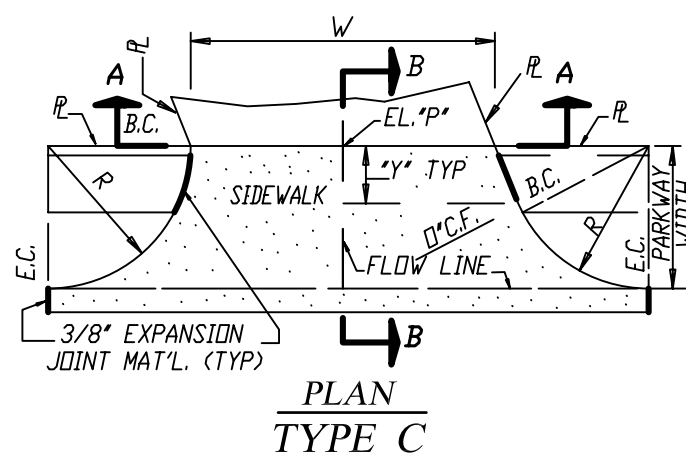
**PLAN
TYPE A**



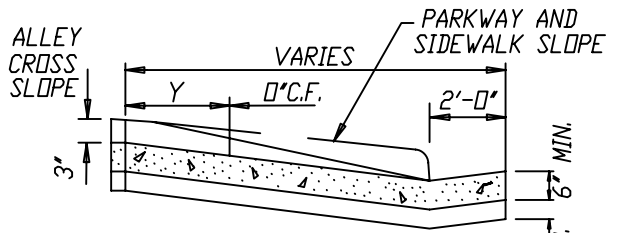
PLAN



**SECTION A-A
TYPE B**

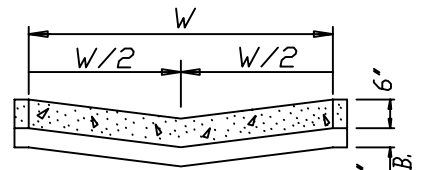


**PLAN
TYPE C**



SECTION B-B

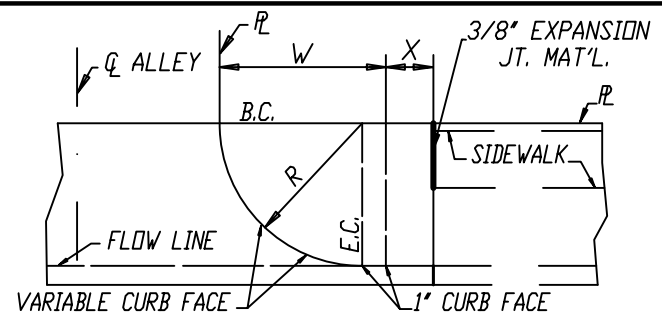
APPLIES TO TYPES A, B, & C APPROACHES



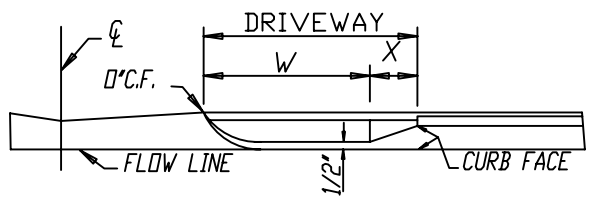
**SECTION A-A
APPLIES TO TYPES A & C APPROACHES**

NOTES:

1. ELEV. 'P' IS 3" BELOW A LEVEL LINE EXTENDED FROM THE LOWER OUTER EDGE.
2. THE RADIUS OF THE CURB RETURN SHALL BE EQUAL TO THE PARKWAY WIDTH BUT NOT GREATER THAN 10'.
3. CONCRETE SURFACE FOR 6" ON EACH SIDE OF A FLOW LINE SHALL BE GIVEN A STEEL TROWEL FINISH EXCEPT BETWEEN THE PROPERTY LINE & THE GUTTER FLOW LINE.
4. 'M' SHALL BE EQUAL TO W/5, BUT NOT LESS THAN 2 FEET.
5. ALLEY APPROACH SHALL BE 6" THICK PORTLAND CEMENT CONCRETE UNLESS OTHERWISE SPECIFIED.
6. 'Y' SHALL BE A MINIMUM OF 3', AND A MAXIMUM OF 5'.
7. CONCRETE SHALL BE 5600-C-3250



PLAN



ELEVATION


**DRIVEWAY ADJACENT TO ALLEY INTERSECTION
APPLICABLE AS REQ'D TO TYPES A, B, & C APPROACHES**

REV. 1/2003 MW REV. 9/93

**CITY OF NEWPORT BEACH
PUBLIC WORKS DEPARTMENT**

**ALLEY APPROACHES
TYPES A, B, AND C**

APPROVED:



RCE NO. 36106 PUBLIC WORKS DIRECTOR

Date: 7 SEPT. 1994	Scale: N.T.S.
Drawn by: M. GRACIA	F:\USERS\PBW\Shared\CAD_STD\STD_Details\2003_Std

DRAWING NO. STD-142-L