

December 2016 Update- All things Aviation:



If you'd like additional information, please contact Newport Beach City Manager Dave Kiff at dkiff@newportbeachca.gov.

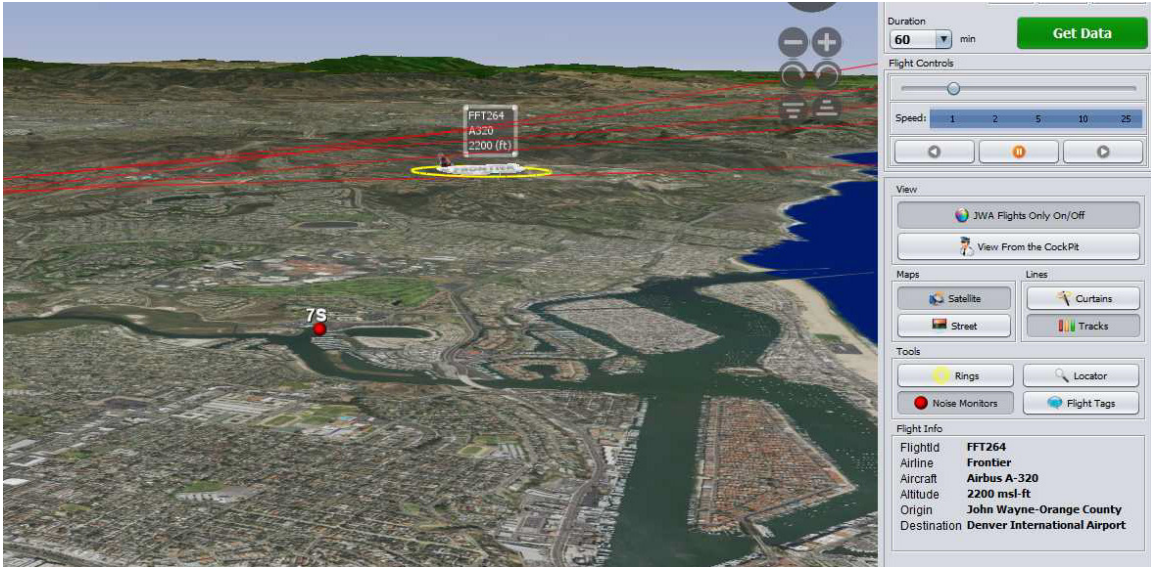
Frontier Airlines Introduces the a320neo to JWA

As discussed at the most recent Aviation Committee Meeting, Frontier Airlines has introduced the a320neo to its fleet of aircraft at JWA. What follows is the noise performance of its maiden departure from JWA on November 30, 2016. The flight from JWA to Denver was a Class A Commercial ADD. An additional significant advantage for residents of the City is that the altitude at the coast line was approximately 4500+ feet.

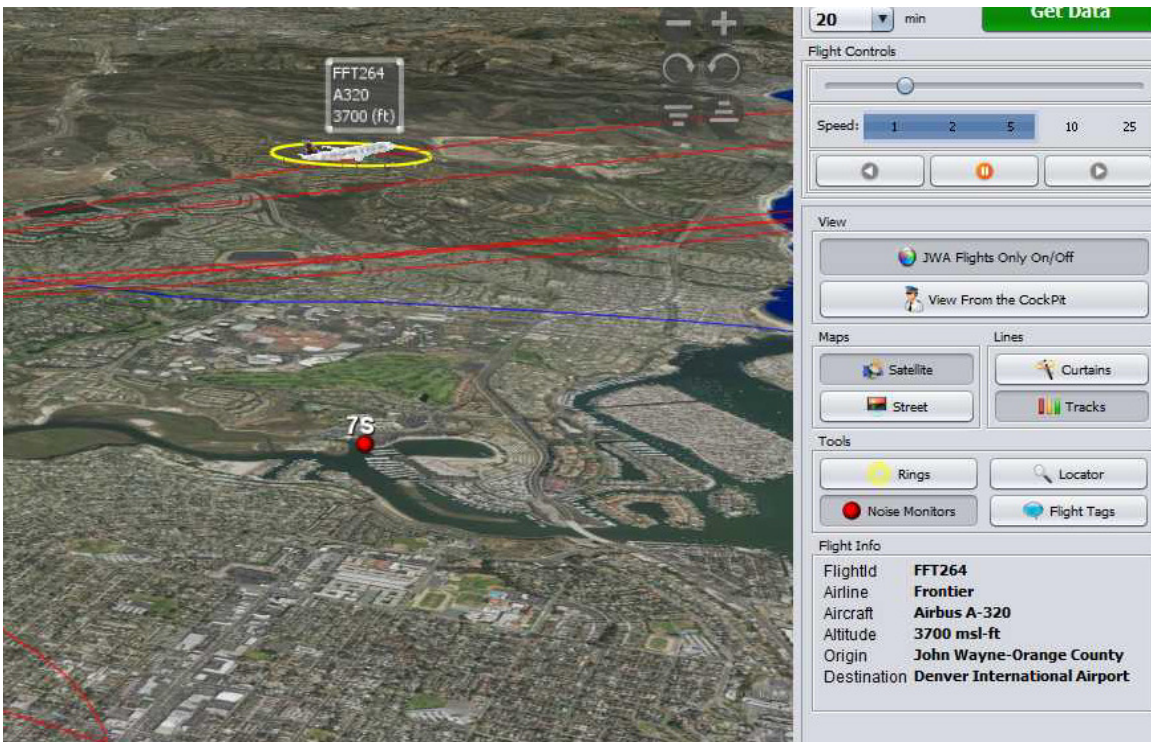
Noise Limits vs. a320neo Departure 11/30/2016

Noise Monitoring Station	Commercial Aircraft		a320neo Departure		a320 2nd Qtr. 2016
	Class A	Class E			
NMS 1S	102.5 dB SENEL	94.1 dB SENEL	88.6 dB SENEL		96 dB SENEL
NMS 2S	101.8 dB SENEL	93.5 dB SENEL	88.3 dB SENEL		95.2 dB SENEL
NMS 3S	101.1 dB SENEL	90.3 dB SENEL	87.2dB SENEL		93.7 dB SENEL
NMS 4S	94.8 dB SENEL	86.6 dB SENEL	82.8 dB SENEL		87.7 dB SENEL
NMS 5S	95.3 dB SENEL	87.2 dB SENEL	79.8 dB SENEL		86.3 dB SENEL
NMS 6S	96.8 dB SENEL	87.2 dB SENEL	Did not register		87 dB SENEL
NMS 7S	93.7 dB SENEL	86.6 dB SENEL	Did not register		83.5 dB SENEL

Altitude of A-320 at or about NMS7 on 12.13.16



Altitude of A-320neo at or about NMS7 on 11.30.16



Additional Flight Information

You will note that there were no SENEL readings at NMS 6&7. In order for an SENEL event to take place, the noise event (Lmax) has to reach the threshold of 65 dB within a

specific duration of time. Once this occurs, the calculation provides the SENEL. If a SENEL event did not occur, then one, or the other, of the two requirements (reaching the threshold, or lasting a specific duration of time) did not occur to result in a SENEL event. The noise generated by the aircraft over noise monitors 6&7 did not reach the set threshold of 65 dB for a period of 10 seconds or longer. The departing flight had a gross takeoff weight of 148,671 lbs., with 171 onboard. Frontier anticipates that it will begin normal operation with the a320neo in February.

A very rough altitude comparison of the November a3290neo maiden departure and the December 13th departure with the a320 showed the following:

<u>Flight</u>	<u>NMS7</u>	<u>BIsland</u>	<u>Coast</u>
12/13- a320	2200	2300	2400
11/30-a320neo	3700	4200	4500

While the flight on November 30th represents only one flight, it is encouraging and well worth monitoring future operations.

JWA September Statistics

Airline passenger traffic at John Wayne Airport increased in September 2016 as compared with September 2015. In September 2016, the Airport served 867,073 passengers, an increase of 5.2% when compared with the September 2015 passenger traffic count of 824,125. Through the first nine months of 2016, the MAP count at the airport is 7.8 MAP. In September 2016, commercial aircraft operations increased 12.4% and commuter aircraft operations decreased 66.8% when compared with September 2015 levels. Total aircraft operations increased in September 2016 as compared with the same month in 2015. In September 2016, there were 24,128 total aircraft operations (take-offs and landings), an 8.3% increase compared to 22,278 total aircraft operations in September 2015. The ADDs for September 2016 were 129.2 vs. 118.55 for the same month last year.

Metroplex

You can learn about changes in flight paths at John Wayne Airport that are proposed to occur in March and April 2017 that will upgrade the existing system to satellite-based technology at Public Webinars to be conducted by the Federal Aviation Administration (FAA). Here is the current briefing schedule regarding John Wayne Airport:

Public Webinar:

Date: January 19, 2017

Time: 6 p.m.

Visit the FAA website to register:

<https://www.faa.gov/nextgen/communityengagement/socal/>

For additional information see:

<http://www.metroplexenvironmental.com/socal metroplex/socal introduction.html>

There will also be an open forum to discuss the proposed changes.

Open Forum:

Date: Wednesday, February 1, 2017

Time: 5:00 p.m. to 8:00 p.m.

Location: Oasis Senior Center — Evelyn Hart Event Center

801 Narcissus Avenue

Corona Del Mar, CA 92625

Airports in the Region

Ontario

Ontario International Airport had a 3 percent increase in passenger traffic in October over the same month in 2015, the facility reported in its first traveler count issued through the Ontario International Airport Authority. The airport had 391,996 passengers in October, compared to 380,584 for October 2015. The year-over-year

passenger number for the first 10 months of 2016 was remarkably close to last year's number, 3,499,925 passengers for 2016 compared to 3,499,904 for 2015. Domestic passengers increased 0.2 percent; international passengers dropped 4.5 percent.

For October, international passenger traffic showed 10,025 an 18.1 percent increase over the same month last year. Domestic passengers, 381,971, increased by 2.7 percent for the same time frame. The airport has seven air carriers, with service to 13 U.S. cities and Mexico, with about 62 daily departures. Southwest Airlines is scheduled to offer a new daily nonstop flight from ONT to Dallas Love Field starting Jan. 15, 2017. The top four airlines by passenger count in October were Southwest, 228,555; American Airlines, 70,642; Alaska Airlines, 35,172 and United Airlines, 32,989.