

July 18, 2019

Newport Beach Library Lecture Hall Building Project Design

Proposal

sander architects

MITHŪN | HODGETTS + FUNG

July 18, 2019

Peter Tauscher, Senior Civil Engineer
Public Works Department
City of Newport Beach
100 Civic Center Drive
Newport Beach, CA 92660

SANDER ARCHITECTS
13274 Fiji Way
Suite 150
Marina del Rey, CA 90292

Re: Newport Beach Library Lecture Hall Building Project Design

Dear Peter,

Sander Architects and Mithun | Hodgetts + Fung are proud to present this Proposal for the Newport Beach Library Lecture Hall (LLH). Our team's unique combination of work and abilities will result in an LLH of great sensitivity and presence, combined with excellent functionality. Our collaborative team of designers see this opportunity to create a space, site and environment that will reflect the form and detail of the people who use this facility. Our proposal outlines our team's working relationship and our complementary design experience and philosophical attitudes.

The design discourse between Sander Architects and Mithun | Hodgetts + Fung is long-standing, in both educational and professional realms. We have worked together on a planned, education-centered community for the City of Memphis, which coincided with our shared sense of the ethical and societal possibilities of positive architectural intervention. Along with a sympathetic design attitude, Mithun | Hodgetts + Fung brings a national perspective to the team, with projects of many scales across the country.

Our great interest in the Library Lecture Hall was heightened by the recent walk-through, where we gained a deeper understanding of the complex nature of the site and program. The casual, yet ceremonial, bamboo court, an overlap with the pedestrian bridge, and the opportunities that would allow for a more formal entrance, as well as the relationship to the iconic City Hall will each influence the visitor and user experience of the new structure. Projects like this stretch the talents of most firms, and are the kind that excite our team. If selected, we look forward to creating an inspiring and timeless facility for Newport Beach Library that will enrich the existing complex and bring an enhanced presence to the Library campus.

Please don't hesitate to send any questions you and the Committee might have. We look forward to the future interactions that this proposal evaluation process involves.

Regards,



Whitney Sander / Principal
w@sander-architects.com



Craig Hodgetts / Partner
craigh@mithun.com



MITHUN
Los Angeles
Mithun | Hodgetts + Fung
5837 Adams Boulevard
Culver City, CA 90232

San Francisco
660 Market Street #300
San Francisco, CA 94104

Seattle
Pier 56
1201 Alaskan Way #200
Seattle, WA 98101



Jesuit High School Chapel of
the North American Martyrs /
Sacramento, CA

1. Introduction

Introduction and understanding of the project including key ideas for successful implementation of this project.

Project Understanding

For the future Newport Beach Library Lecture Hall (LLH), our team envisions the creation of a congenial gathering space that is both visually attractive and embodies functional design from the inside out. The LLH will enrich the lives of Newport Beach’s 87,000 residents by providing an inspiring space for readers, performers, and discussions of all types. The design for the lighting, lobby and concessions will be scaled to encourage gracious interaction between audience members and complement an inspiring cultural occasion.

As a venue for allied cultural events and a vessel for outreach to diverse constituencies, the lecture hall and courtyard combination will enrich the lives of Newport Beach’s residents and neighboring communities. The addition of a LLH to the existing City Hall and Library complex offers the opportunity to add a multifunctional courtyard and hall to the civic campus. In so doing, the project will add a functionality far beyond its nominal size to animate and energize the existing outdoor space and create a gathering hub for the Library complex.

We recognize that the City of Newport Beach has a well-established civic identity and that the LLH will be an important component of this identity. As a first step in the design process, we propose compiling an “image board” of comparable projects around the world in order to initiate a meaningful dialogue with community members. Materials, forms, and details will be considered as an integral part of the ensemble.

Project Approach

There are three key factors that will determine our approach to the Library Lecture Hall project.

1. Because of the casual nature of the community and the need to provide rapid, sometimes spontaneous accommodation for a variety of performers and attractions—from the intimacy of poetry readings to the dynamics of dance—the design for the LLH must offer a convenient, functional ability to change accordingly. Our team's experience in the technical aspects of theater design—from the Wild Beast recital hall at CalArts and the recently completed Idyllwild concert hall, to the renovated Robert Frost Auditorium in Culver City—speaks to our ability to design for maximum flexibility and, in so doing, increase utilization.
2. The prominence of the civic domain, particularly from Avocado Boulevard, suggests that the LLH will serve as a “marker” for the City Hall and Library complex. Our design studies will focus on the visual presence of the Lecture Hall from the point of view of passing traffic, as we have similarly studied a prominent mixed-use site on Sunset Boulevard. Factors to consider will include:
 - profile and massing of the volume
 - visibility from the speeds of both driving and walking
 - exterior materials
 - relationship to the riparian vegetation found in the swale

3. The relationship of the lobby and entryway to the existing Bamboo Court should enhance the guest experience by anticipating the need for refreshments, visitor amenities, lighting, and maintenance. As our team has designed multiple projects in which fund-raising events, celebrity interviews, and theatrical intermissions utilize adjacent outdoor spaces and courtyards, we will strive to create and program architectural and landscape features to support those activities.

Each of these factors will be filtered and modified as necessary through the responses by residents and civic leaders to our diagrams, drawings and models at community meetings. This iterative format will ensure that the LLH conforms to needs and exceeds expectations.

Our team's process is supple and responsive. With full in-house rendering capacity and integral theater, landscape, and interiors specialists, we have the ability to quickly respond to input during the concept and design development stages. In this way, the special skills of each office can be focused on the special needs of finishes, acoustics, lighting, and sight lines on one hand, and structure, systems, and envelope design on the other. Thereafter, integration of construction documents will be enabled by our physical proximity and communications technology.

2. Experience

The Firm's and Project Manager's experience with at least three similar projects of successful installation in Southern California, including references, with contact person and telephone number. A floor plan and several interior and exterior photographs of projects referred to shall be provided.

THE FOLLOWING PAGES HIGHLIGHT A SELECTION OF PROJECTS COMPLETED BY SANDER ARCHITECTS AND MITHUN | HODGETTS + FUNG THAT ARE OF SIMILAR SCALE AND PROGRAM ELEMENTS TO THE NEWPORT BEACH LIBRARY LECTURE HALL.

WE WELCOME YOU TO CONTACT THE REFERENCES LISTED AS THESE ARE SOME OF THE FOLKS WHO KNOW US BEST.

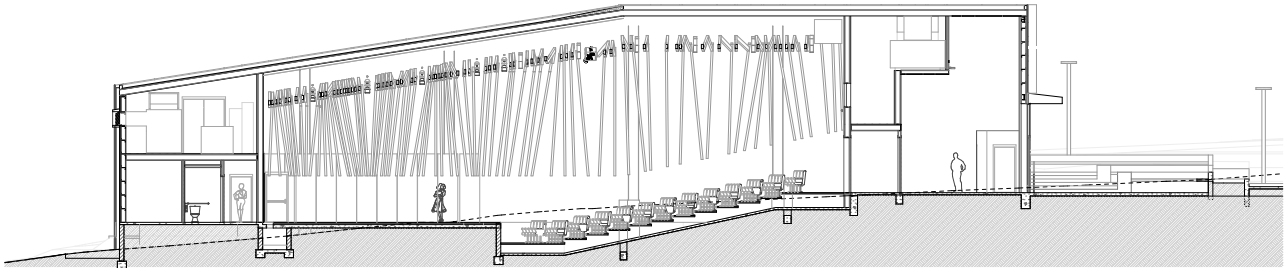
Our team's notable relevant experience includes:

- William M. Lowman Concert Hall at the Idyllwild Arts Academy
- Robert Frost Auditorium
- California Institute of the Arts Wild Beast Pavilion
- Menlo-Atherton Performing Arts Center
- Jesuit High School Chapel of the North American Martyrs

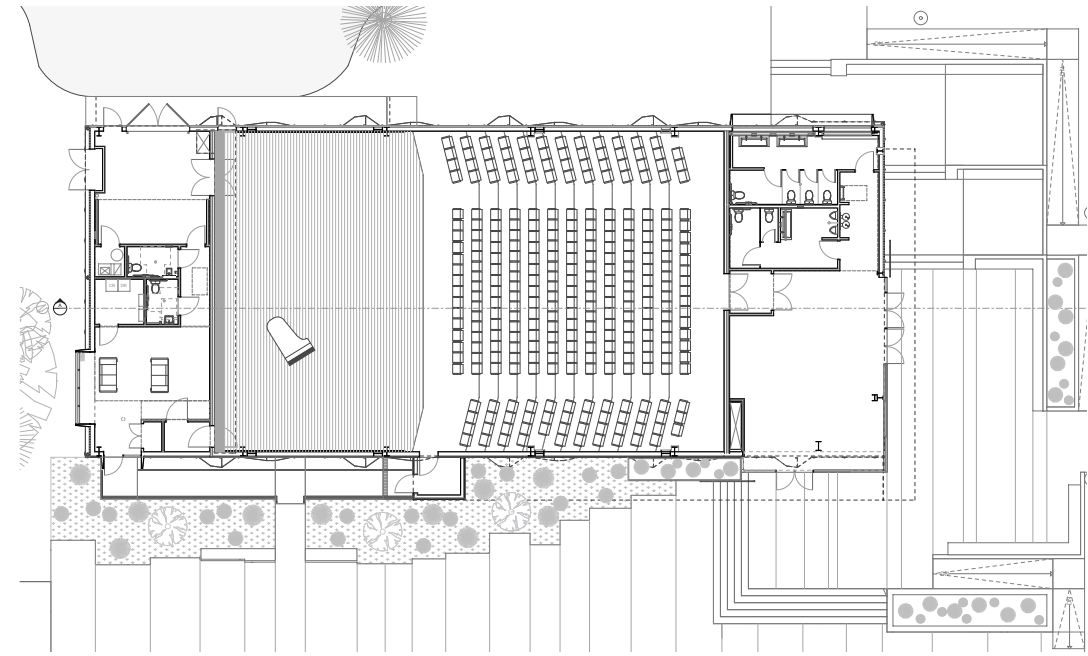
William M. Lowman Concert Hall
Idyllwild Arts Academy / Idyllwild, CA



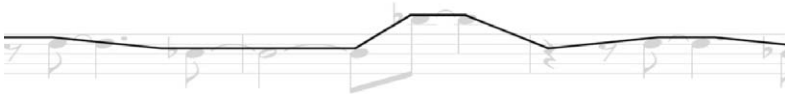
2. Experience (continued)



Section



Site Plan with Landscape



Richard James. 'Xtal'. 1992.

Symphony of Light and Sound

William M. Lowman Concert Hall Idyllwild Arts Academy

Idyllwild, California

Client	Idyllwild Arts
Overview	New concert hall for Idyllwild Arts—one of the country's top three High Schools for the Arts
Program	Concert hall seating 298 audience members; includes a lobby, restrooms, green room, mechanical space and musical instrument storage space
Size	8,149 sf
Cost	\$4.3 million
Completion	2016
Credits	Whitney Sander, Jason Zhang (Sander Architects); Nathan Wittasek (executed while at Arup); Nick Antonio (executed while at Arup)
Reference	Laura Sherman, Vice President, Campus Planning & Facilities Management, (951) 659 2171 x2202, lsherman@idyllwildarts.org; John Newman, Director of Business Operations, (951) 663 6377, johnrichardnewman@gmail.com

Evoking the Elements

The William M. Lowman Concert Hall at Idyllwild Arts is inspired by the forest of trees and surrounding elements of the Idyllwild campus. Sheathed in rusted Cor-Ten panels with an irregular topography derived from an abstracted musical phrase, the exterior of the concert hall alludes to the music within and to the landscape of folded rock and granite that make up the surrounding mountains.

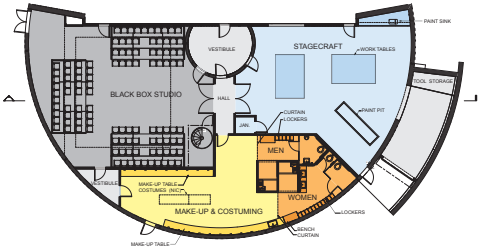
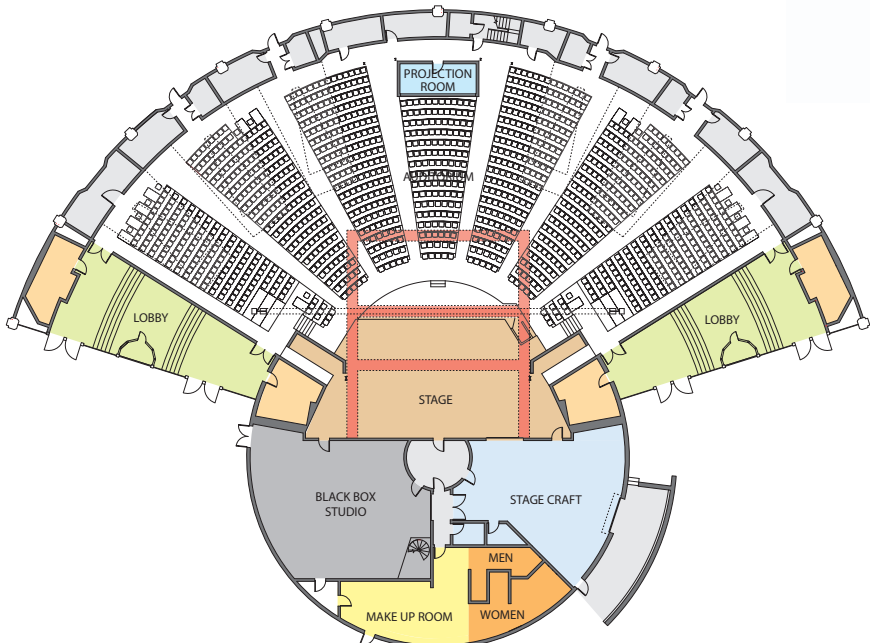
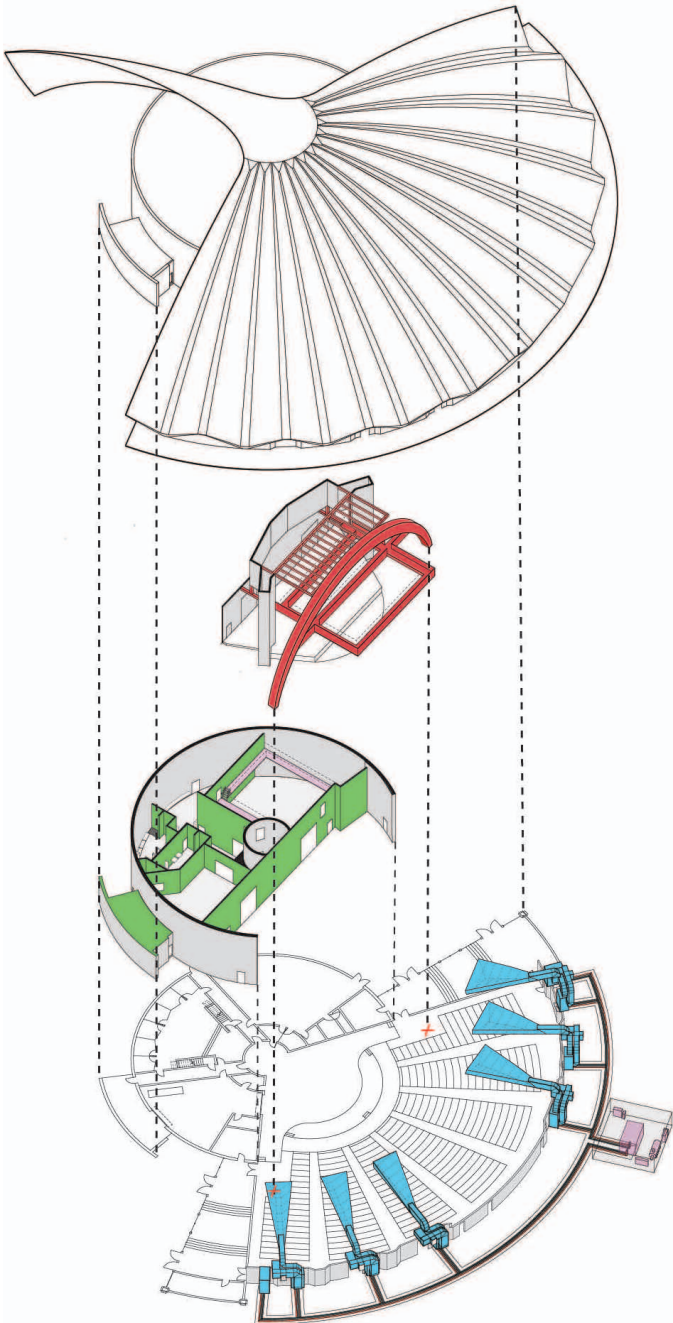
A Site Reimagined

The building's site repurposes a parking lot located at the heart of campus to create a central campus quad and gathering space for the school community. The new hall harmoniously blends with existing buildings on campus. Its entrance lobby has soaring ceilings from which hang dozens of white globe lights that create a celestial effect, subtly dancing when the doors open to create a cross breeze.

Construction Innovations

Using Hybrid Construction—a method conceived by Sander Architects that combines prefabricated structural systems with custom design—prefabricated metal frames are utilized for the most expensive structural components at a fraction of typical costs allowing for significant savings.

2. Experience (continued)





Remaking History

Robert Frost Auditorium

Culver City, California

Client	Culver City Unified School District
Overview	Dynamic reuse of an iconic 1960s-era auditorium to preserve the historic structure and create a contemporary performing arts center on the Culver City High School campus
Program	Auditorium, black box theater, back-of-house spaces and lobby
Size	28,640 sf
Cost	\$18 million
Credits	Craig Hodgetts, Hsinming Fung, Darin Vieira (Mithun, executed as Hodgetts + Fung)
Reference	Heather Moses, CCUSD Arts Coordinator Culver City Unified School District, (310) 842 4220 ext. 4230, heathermoses@ccusd.org

Honoring Legacy

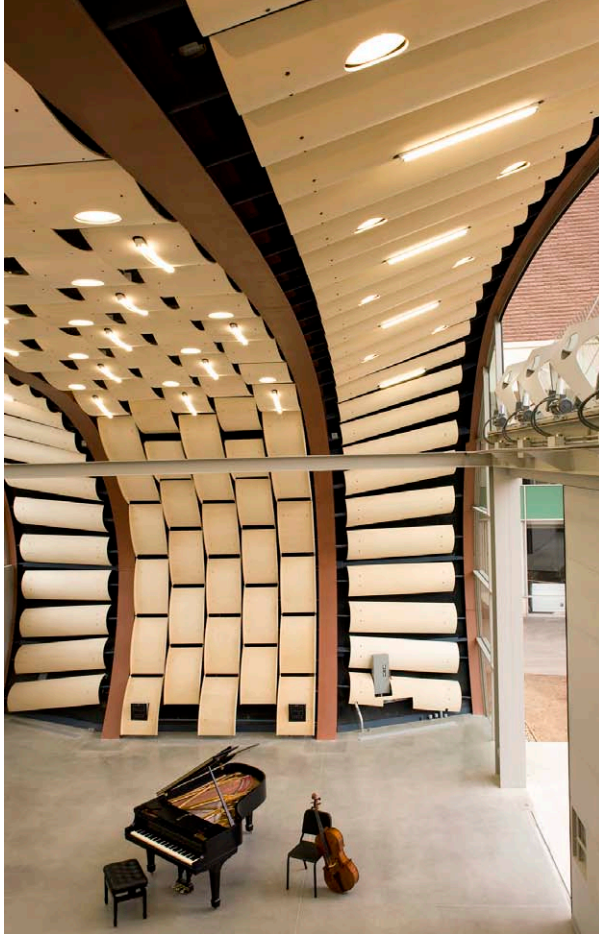
Beloved by student performers despite the challenges of mounting a show, the Frost Auditorium had not kept pace with changes in technology and audience expectations. After an intensive analysis with school faculty and theater experts, a plan was proposed to fully utilize the potential of the historic building while honoring its architectural legacy.

Refined Acoustical Experience

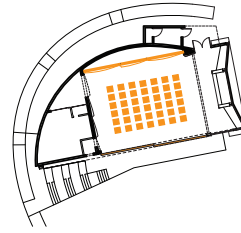
Due to the delicate nature of the structure and to reduce cave-like echoes in the building, the design surrounds the auditorium with lightweight sculptural forms that combine acoustical attenuators suspended from the pleated concrete roof with air supply outlets projecting from the walls.

High Performing Stage

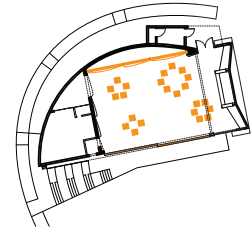
The new design features a 40-foot high, 9,000-pound sweeping steel proscenium arch that spans the stage to support new theatrical catwalks and lighting equipment. With a new larger stage, enhanced performance qualities and back-of-house facilities, the resurrected Frost enhances high school performance capability and invites community use to re-animate its one-of-a-kind concrete shell.



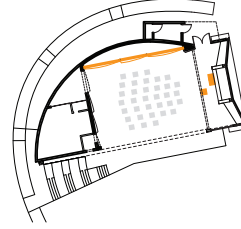
CLASSROOM



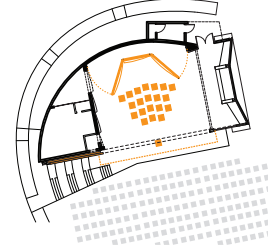
DISPERSED CLASSROOM



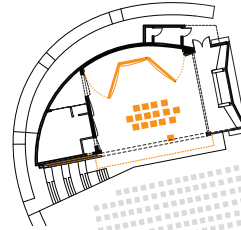
INDOOR RECITAL



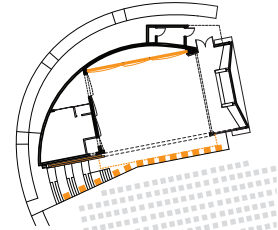
OUTDOOR RECITAL



BRASS/JAZZ



AFRICAN DRUMS





Kinetic Transformation

California Institute of the Arts— Wild Beast Pavilion

Valencia, California

Client	California Institute of the Arts
Overview	New classroom, recital hall and outdoor performance stage at the Herb Alpert School of Music
Program	Multipurpose music recital hall and outdoor amphitheater, instrument storage, reception area
Size	3,200 sf: 0.88 acres
Cost	\$2.3 million
Credits	Craig Hodgetts, Hsinming Fung (Mithun, executed as Hodgetts + Fung)
Reference	Steven Lavine, Former President, CalArts, (661) 255 1050, slavine@calarts.edu

Celebrating Musical Representation

Wild Beast combines attributes of a fine musical instrument with an ensemble of kinetic and structural innovations, capable of rapid transformation from an enclosed recording studio into an outdoor performance shell. Its form and materials celebrate musical genres represented by the school curriculum.

Inspirational Experience

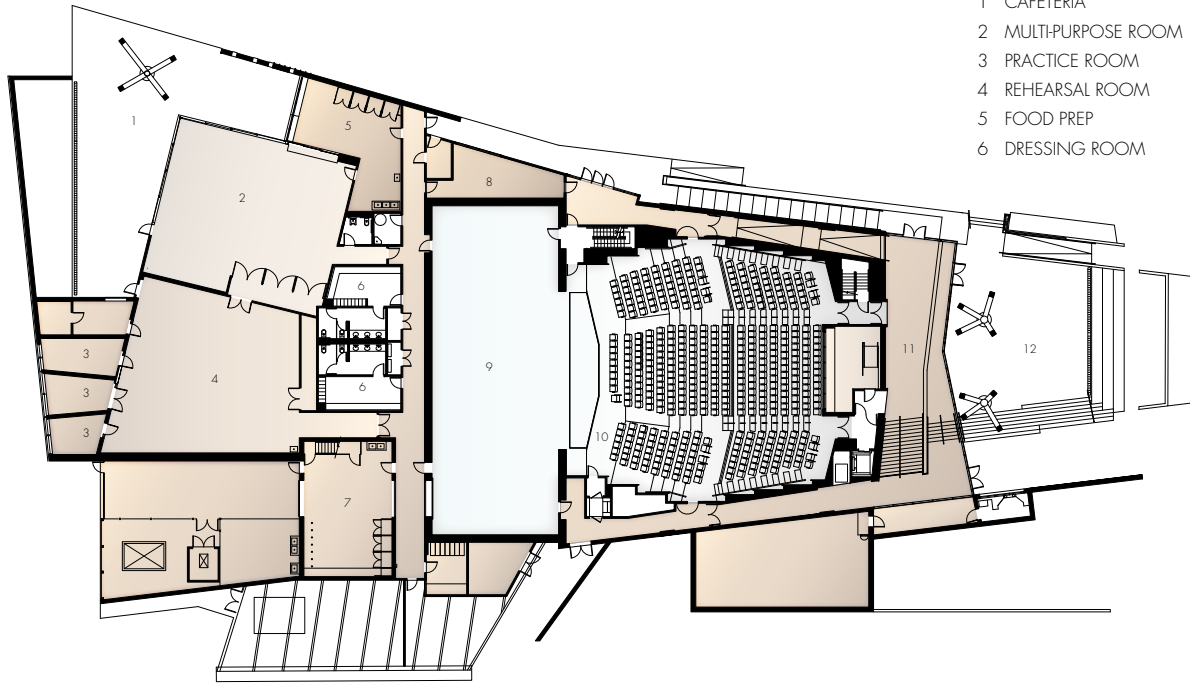
CalArts' ability to inspire the performances of its conservatory-trained musicians is paramount. In response, the Wild Beast Pavilion frames the individual soloist in recital mode and acts as a generous forestage to accommodate CalArts' Gamelan concerts. The audience is welcomed with casual seating, terraced steps and a balcony for receptions.

Campus Gateway

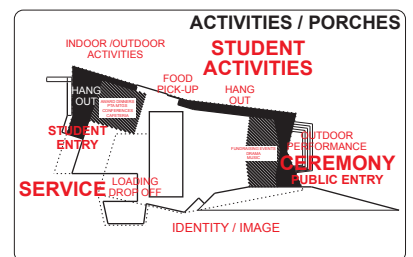
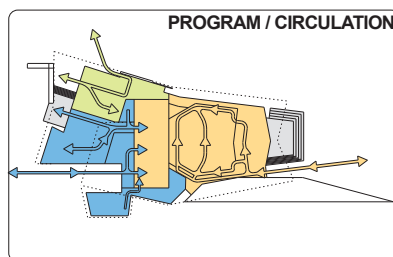
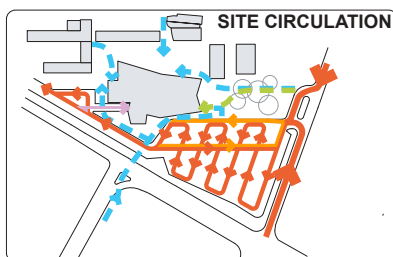
Clad in copper-hued shingles and nestled into the berm that shapes the entry to CalArts, the Wild Beast is an iconic gateway to campus. With a simple, lyrical form that contrasts with the mass of an adjacent megastructure, its acoustically resonant form features simple design solutions to enhance performance in functional and aesthetically rewarding materials.

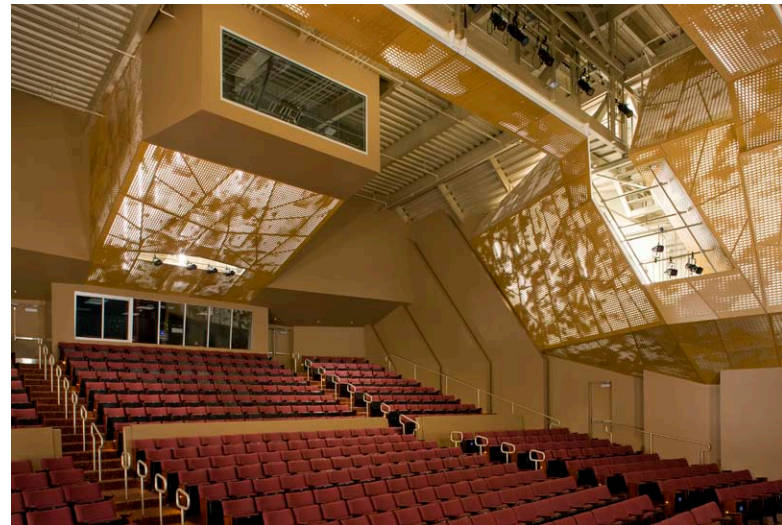
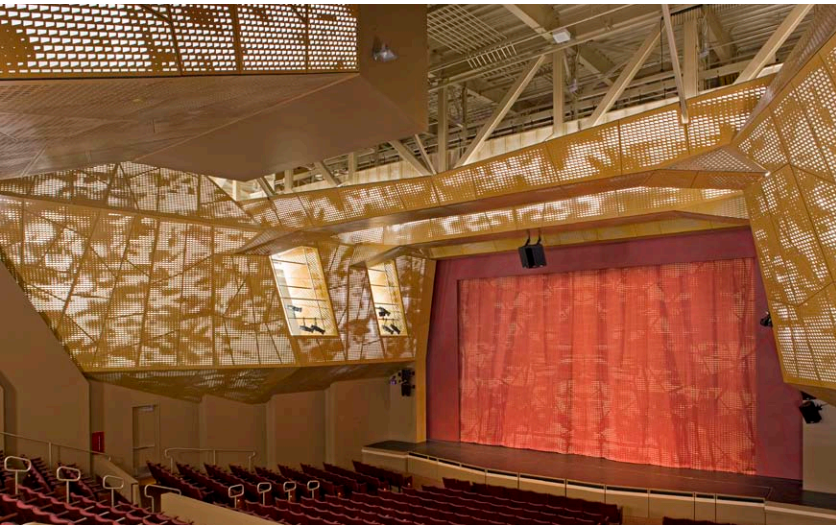
2. Experience (continued)

- | | |
|---------------------|--------------------|
| 1 CAFETERIA | 7 STAGECRAFT |
| 2 MULTIPURPOSE ROOM | 8 LOUNGE |
| 3 PRACTICE ROOM | 9 STAGE |
| 4 REHEARSAL ROOM | 10 AUDITORIUM |
| 5 FOOD PREP | 11 LOBBY |
| 6 DRESSING ROOM | 12 ENTRY COURTYARD |



12





Where Art Meets Science

Menlo-Atherton Performing Arts Center

Atherton, California

Client	Sequoia Union School District
Overview	New Silicon Valley performing arts center located on the Menlo-Atherton High School campus
Program	500-seat auditorium, band room, outdoor gathering plaza, instrument storage, scene shop, reception and performance space, dining hall and presentation space
Size	31,209 sf; 0.7 acres
Cost	\$29.5 million
Credits	Craig Hodgetts, Hsinming Fung, (Mithun, executed as Hodgetts + Fung)
Reference	Ralph Adams, Project Inspector Sequoia Union School District, (650) 218 0888, adamsrw88@earthlink.net

Creative Catalyst

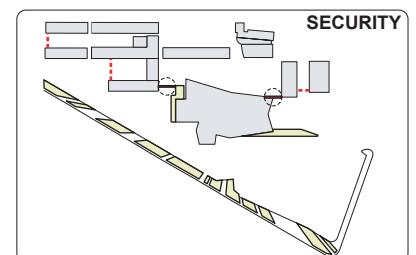
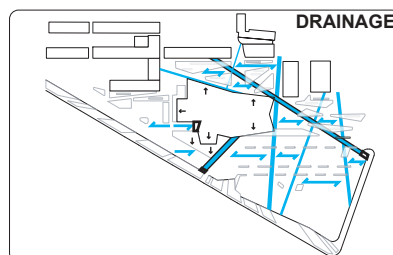
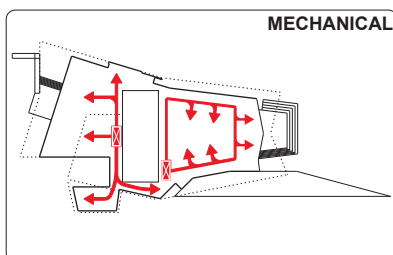
Aligning with the school's arts and science-oriented curriculum, this performing arts center incorporates a dynamic hybrid program of practice, rehearsal and performance spaces alongside a dining hall and hands-on workshops to enhance the creative activities and interactions of the actors and musicians who perform there.

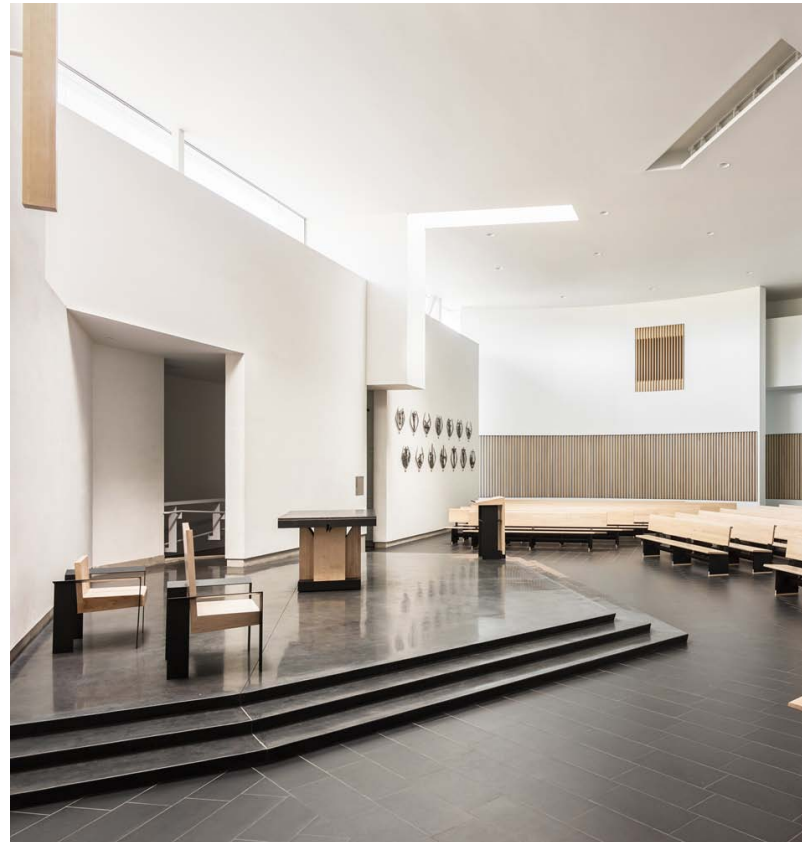
A Natural Performer

The building's broad, overhanging eaves complement the surrounding low-slung classroom buildings, and monumental structural "trees" echo the site's entry grove of historic oaks. Within the theater, digitally processed luminous screens evoke foliage and modulate acoustics according to the needs of the performer, while a special air plenum contributes to an environment of recording studio silence.

Community Magnet

As the only professional-caliber stage in the region, the center accommodates diverse productions ranging from spoken word to musical theater and orchestral performance, and has hosted the San Francisco Opera and Music at Menlo. Architecturally integrated devices adjust the proscenium width for the varied audience sizes.





Spiritual Anchor

Jesuit High School Chapel of the North American Martyrs

Sacramento, California

Client	Jesuit High School
Overview	New Chapel of the North American Martyrs located at the Jesuit High School campus
Program	Chapel seating 350 people, entry hall, meeting and prayer rooms, plaza, landscape and parking
Size	10,478 sf
Cost	\$10.8 million
Credits	Hsinming Fung, Darin Vieira (Mithun, executed as Hodgetts + Fung)
Reference	Father David Suwalsky, President, Jesuit High School (916) 482 6060, president@jhssac.org

Welcoming Presence

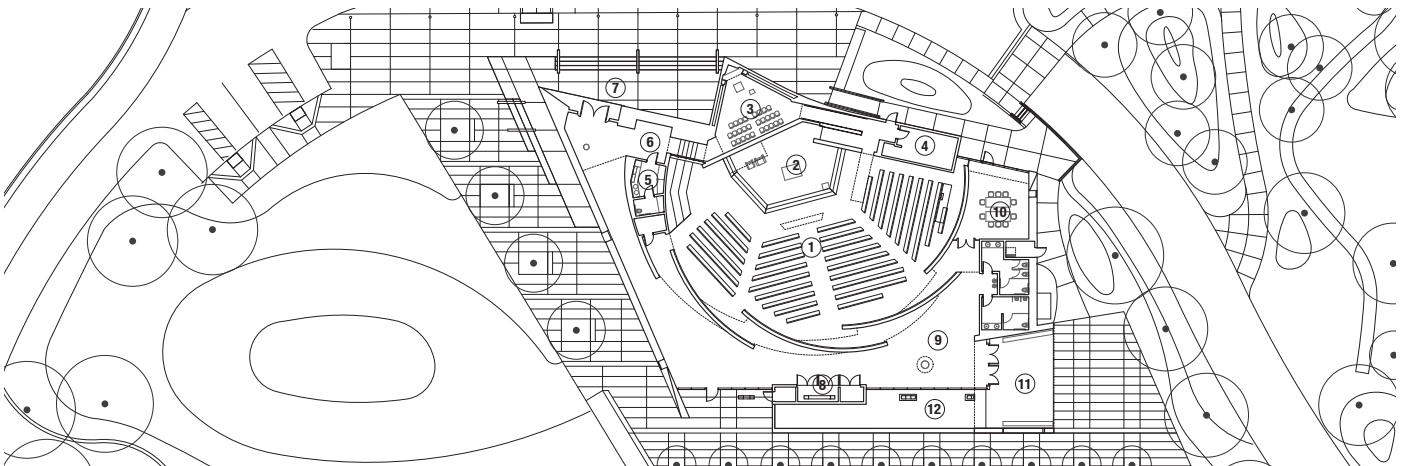
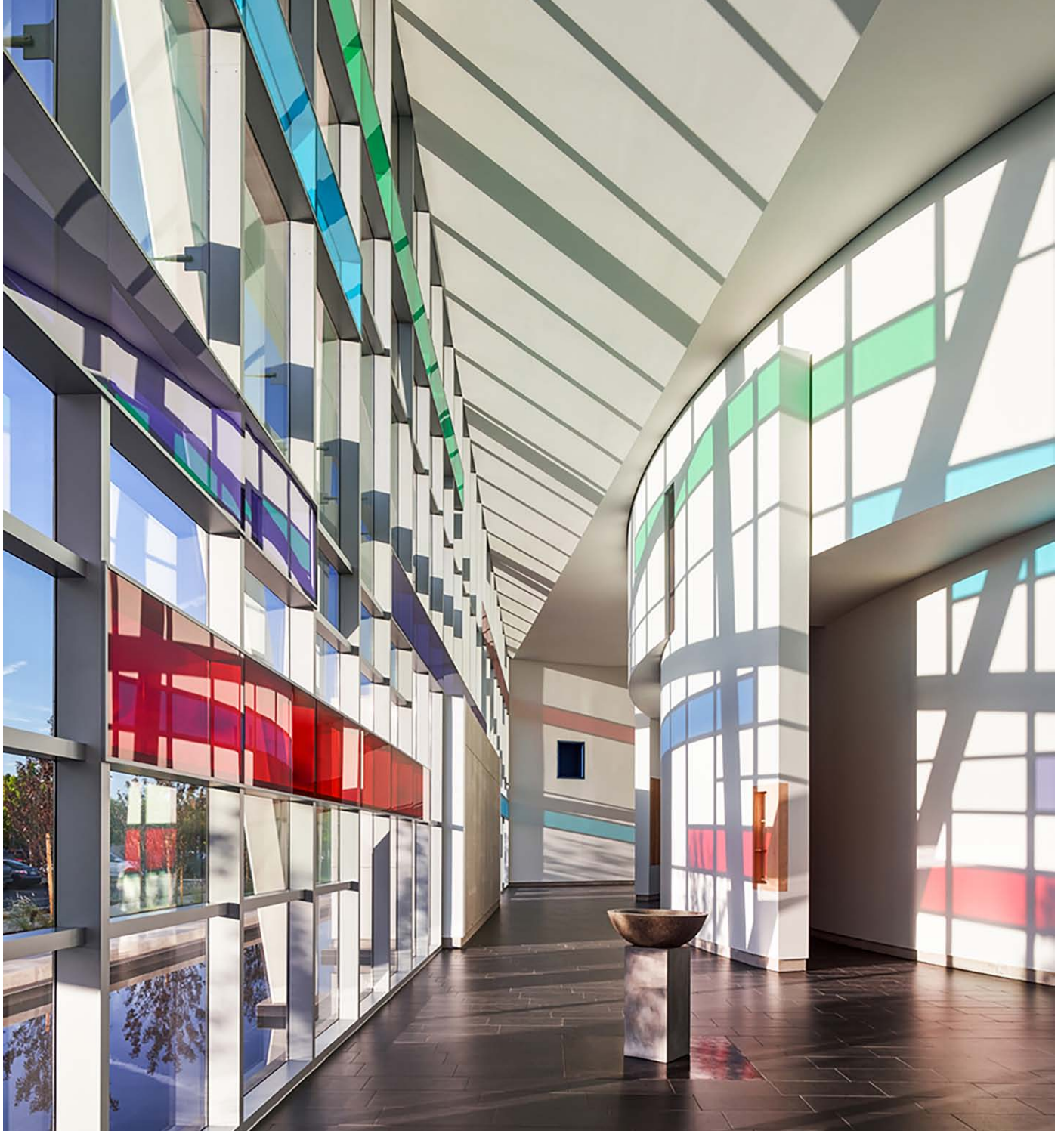
The Chapel's strong yet simple geometry, enduring materials, and soaring ceilings provide a spiritual anchor for the Jesuit High School campus. An iconic structure greeting students on their daily arrival, it is a welcoming presence when approached from main campus and a visible landmark to the surrounding community.

Thoughtful Dialogue

An immersion in the Catholic liturgy formed the foundation for in-depth conversations with school staff, students and administration, leading to a modern interpretation of medieval spaces and icons. After an administrative change prompted a profound revision of the initial concept, the design was revised to emphasize acoustic excellence, the play of light and an expansive liturgical space.

Shared Devotion

Arcs, axes, and alignments create a subtle yet inevitable path towards the sanctuary and, from there, towards the altar. The sanctuary is sized to accommodate school services and ceremonial occasions while a smaller devotional shrine to the Lady Mary allows for individual prayer, contemplation and group devotion.





Chatham University Eden Hall Campus
Barazzone Center / Richland Township, PA

3. Subconsultants

Identify all subconsultants with qualifications, specific project responsibilities, and anticipated total effort.

Subconsultants

Our subconsultant team has been selected for their experience with auditoria, theaters, and campus settings as well as a history of collaboration with Sander Architects and Mithun | Hodgetts + Fung. Additionally, the Mithun team brings an integrated design approach to landscape architecture, providing in-house landscape architecture design services and a seamless indoor-outdoor experience for the new LLH.

We recognize that environmental comfort, acoustic clarity and a minimum sound threshold from mechanical and electronic equipment, are critical to the success of the LLH. Our team can assure the City that design and coordination of engineered systems will be among our highest priorities. We have also noted the noise generated by traffic as it accelerates up Avocado Boulevard and recognize the need to design the project to exclude it. Our team accomplished this for the Wild Beast Pavilion at CalArts, for which we created recording studio silence in spite of heavy truck traffic on the adjacent Golden State Freeway.

Each of these considerations will be addressed during the initial phases of design with focused meetings among our consultants, thus ensuring that these and other challenges will be resolved prior to finalizing the design.

We propose the following consultant team:

- **Mithun**, will provide landscape architecture services in addition to leading the interior design effort to ensure a seamless, integrated indoor-outdoor experience.
- **Nous Engineering** will lead the structural engineering effort for the project.
- **All Trade Engineering** will lead the mechanical, electrical and plumbing effort as well as provide oversight ensuring the new LLH meets the California Title 24 requirements.
- **DCi Engineers** will provide civil engineering services.
- **Hamilton & Associates** will provide geotechnical services.
- **Antonio Acoustics** will lead the acoustical design.
- **Simpson Gumpertz & Heger** will provide fire/life safety and code consultation.
- **The Capital Projects Group** will provide cost estimating.

For additional details on project responsibilities and anticipated workload for each key subconsultant see our draft workplan on page 35 within this proposal. Consultant resumes are included on the following pages.

Mithun

Contact

Craig Hodgetts
5837 Adams Blvd
Culver City, CA 90232
(323) 937 2150
craigh@mithun.com

Mithun is an integrated design firm dedicated to creating positive change in people's lives. As a national practice with offices in Los Angeles, San Francisco and Seattle, we are a unified design studio with an open and collaborative spirit founded on a process of inquiry and listening.

Our team of architects, landscape architects, interior designers, urban designers and planners creates seamless experiences that are unique expressions of each client, community and place. We work in a wide range of typologies and scales—with a focus on urban environments and places where people live, work, and learn.

Mithun is an internationally recognized leader in sustainability, combining exemplary design with a focus on building and site performance, human health and social equity. Since the inception of the practice in 1949, our work has been recognized with hundreds of peer and industry awards including the AIA Northwest and Pacific Region Firm Award in 2017, six AIA Committee on the Environment Top Ten project recognitions as well as ranking among the nation's top design firms.

*Mithun project

Tim Mollette-Parks

Principal

Role: Lead Landscape Architectural Designer

Tim brings extensive experience delivering landscape projects of high design quality in both urban and naturalized conditions. Working in a wide range of scales and budgets, Tim has been project manager and designer on high-profile landscapes such as the Broad Museum Plaza and Streetscape in Los Angeles, the Seaside Way Pedestrian Bridge in Long Beach, the new gardens of the Cooper Hewitt National Design Museum in New York City as well as connectivity and urban design strategies for Los Angeles Metro's Crenshaw-to-LAX light rail line.

Education

University of California, Berkeley,
College of Environmental Design MLA
Eastern Kentucky University, BA, Journalism

Professional Affiliations and Activities

American Society of Landscape Architects / University of California Berkeley, Adjunct Instructor, 2011-2015 / Chabot Space and Science Center, Design Advisory Roundtable, 2012 / Landscape Architecture Foundation, Olmsted Scholar Steering Committee, 2017-2019 / Land Art Generator Initiative, Board of Directors, 2017-2018

Representative Projects

- UCLA Lot 15 Residence Halls / Los Angeles, CA*
- UCLA Southwest Campus Apartments / Los Angeles, CA*
- Louisiana Children's Museum at City Park / New Orleans, LA*
- The Athenian School Innovation Hall and Classroom Buildings / Danville, CA*
- Resilient by Design / San Francisco Bay, CA*
- Bayview Opera House / San Francisco, CA*
- The Broad Museum Plaza and Grand Avenue Streetscape / Los Angeles CA (experience prior to Mithun)
- Taylor Yard Pedestrian Bridge / Los Angeles, CA (experience prior to Mithun)
- Metro Crenshaw-LAX Light Rail / Los Angeles, CA (experience prior to Mithun)
- Seaside Way Pedestrian Bridge / Long Beach, CA (experience prior to Mithun)

Nous Engineering

Contact

Matthew Melnyk, Principal
600 Wilshire Boulevard, Suite 760
Los Angeles, CA 90017
(213) 627 6687
matthew.melnyk@nousengineering.com

Nous Engineering is an innovative Structural Engineering firm based in Los Angeles. Since 2012, Nous has built a talented core group of engineers, designers and modelers; all of whom take great care when evaluating the design, constructability and value of our work for our clients. We employ the latest collaboration tools, BIM platforms, and analytical software. Our capabilities allow us to manage complex projects and to develop and execute actual design solutions. At our core is a collective passion and genuine pride for the work we do and a persistent drive to make positive impacts on our industry and the world.

Matthew Melnyk

S.E. / Principal

Role: Lead Structural Engineer

Matthew is a founding partner of Nous Engineering. He is a licensed engineer with 18 years of professional experience in the construction industry, focusing on long-span structures, structural dynamics and advanced computation. He has managed many large-scale projects within the US and internationally. Matthew has been adjunct faculty at the Southern California Institute of Architecture for the past 10 years and has focused his coursework on bridging the gap between architectural design and structural performance.

Education

University of California, Berkeley, Master of Science in Structural Engineering and Mechanics of Materials

University of California, Berkeley, Bachelor of Science, Civil and Environmental Engineering

Registration

California Structural Engineer, #S5853

Professional Affiliations and Activities

American Society of Civil Engineers (ASCE)

American Institute of Steel Construction (AISC)

Representative Projects

- 29 Palms Theater / Twentynine Palms, CA*
- City of Hope Museum and Culture Center / Duarte, CA
- National Memorial for Peace and Justice / Montgomery, AL
- Gloria Kaufman Performing Arts Center/ Los Angeles, CA
- Occidental College Community Base Arts Hub / Los Angeles, CA
- Curtis R. Experimental Media and Performing Arts Center / Troy, NY

All Trade Engineering

Contact

Shane Judd, Principal
17 East High Street
Moorpark, CA. 93021
(805) 552 4000
shane@alltradeengineering.com

All Trade Engineering has established a presence in most Southern California Counties as a one-stop shop for all building engineering needs. We have done over 1600 projects in the last 10 years. All Trade does both commercial and residential structural, mechanical, electrical, and plumbing engineering including Title 24 and Green Building analyses for single and multifamily residential, mixed use, retail, restaurants, offices, surgical centers, manufacturing, malls and more. All Trade is licensed in multiple states, including California and does work throughout the Western Region of the United States.

Shane Judd

P.E., C.B.O. / Principal
Role: Lead Mechanical/Plumbing Engineer
Energy Compliance

Shane has a unique background which encompasses all trades of building engineering. This is not just on the design side but includes plan check and inspection with over 17 ICC certifications. His exposure to hundreds of projects of all building types and his constant desire to grow in his understanding of all aspects of construction provides a unique skill set. He has experience personally engineering mechanical, structural, electrical, and plumbing systems. His high level of understanding of all trades aids in his ability to articulate and communicate with clients, construction teams, and design teams. Shane takes a humble approach towards engineering and recognizes there are often multiple ways to solve problems as they occur.

Education

California Polytechnic State University, Bachelor of Civil Engineering

Registration

California Mechanical Engineer, #M34632

California Civil Engineer, #C70991

Professional Affiliations and Activities

Structural Engineers Association of California (SEAOC)

International Code Council (ICC)

Representative Projects

- CWC Campus / CA*
- Atria Senior Living / CA
- City of San Gabriel Office Building / San Gabriel, CA
- North Broadway Apartment Complex / Santa Maria, CA
- South Bedford Apartment Complex / Beverly Hills, CA
- The Irvine Company / Irvine, CA
- Proud Bird Restaurant / Los Angeles, CA
- Ladyface Alehouse Restaurant and Microbrewery / Agoura Hills, CA
- Concrete Tilt Up Mixed Use Project / Simi Valley, CA

Joseph J. Nasr**P.E.****Role: Electrical Engineer**

Joseph has been working with All Trade Engineering for almost 10 years as their primary Electrical Engineer. He has over 30 years of experience in the field of Engineering. He has been experience working on many large facilities throughout the entire state of California. Joseph is reliable and communicates clearly. He has deep experience working on government buildings and projects and his specialization in Electrical provides him with a vast understanding of the constantly and rapidly evolving lighting and Title 24 Energy industry. He is an excellent fit for the Newport Beach LLH project Engineering team thanks to his experience working in Orange County on a regular basis.

Registration

California Electrical Engineer, #E14879

Representative Projects

- Sea Coast Church / Cypress, CA
- Memorial Urgent Care / Long Beach, CA
- CRISS AIR / Valencia, CA
- Channel Commercial Industrial Facility / Temecula, CA
- Capo Industries / Chino, CA
- Garden Grove Police Station / Garden Grove, CA
- Nueva Esperanza School / San Fernando, CA
- Newport Harbor Animal Clinic / Costa Mesa, CA
- Riverside Animal Shelter, Riverside, CA
- East LA Dialysis Center / East LA, CA
- Good Year, Jiffy Lube / Corona, CA
- Biscuit Lofts / Los Angeles, CA
- Ganahl Lumber / Anaheim, CA

DCi Engineering

22

Contact

David Chapin, Principal
4420 E Miraloma Avenue
Anaheim, CA 92807
(714) 779 3828
david@dciengineering.com

With the mission of providing professional civil engineering and land surveying combined with superlative services, by bringing together the best civil engineers, land surveyors, draftsmen and administrative support. The strength of DCi rests in the cumulative experience and skill of its employees. Registered Professionals with more than 35 years of experience, bring extensive project knowledge and ability. Skilled, prepared and thorough, the engineering and surveying team consistently delivers quality and economical service to its clients. Our sustainable construction approach is up-to-date with the latest green standards. Working hand-in-hand with other professional to meet the ever-changing State and local stormwater quality requirements producing a final product that incorporates low impact development features seamlessly in all projects.

Alberto Rossel

Role: Lead Civil Engineer

As DCi's senior civil designer, Alberto brings over 15 years of experience and expertise in various projects within the company. Alberto has a strong sense of design, he is able to manage and coordinate projects through all phases of the project. Alberto is driven to provide outstanding service to clients and is dedicated to get the job done accurately.

Education

Architecture, University Antenor Orrego, Trujillo, Peru

Registration

California PLS, #7519

California RCE, #65996

Professional Affiliations and Activities

California Land Surveyors Association (CLSA)

Certified QSD and QSP

Representative Projects

- Crown Recycling Services / Sun Valley, CA*
- Placentia Yorba Linda School District/Yorba Linda, CA
- Panorama Park/Bakersfield, CA
- Coyote Hills/Fullerton, CA
- Fountain Valley Senior Campus/Fountain Valley, CA
- Oakcrest Terrace/Yorba Linda, CA

Hamilton & Associates

Contact

David Hamilton, President
1641 Border Avenue
Torrance, CA 90501
www.hamilton-associates.net

Founded in 2004, Hamilton & Associates is a seasoned engineering company that provides a full spectrum of geotechnical engineering, engineering geology and materials testing and inspection services. H&A performs site investigations and specialty geotechnical studies at feasibility-level planning, design and construction stages.

Site history and geologic/geotechnical data research, field geologic reconnaissance, comprehensive exploratory drilling, soil sampling, rock coring, soundings and surveys, in-situ geotechnical testing, instrumentation installation and post-installation monitoring, geotechnical laboratory testing, engineering analyses, and development of conclusions and recommendations for site development, ground improvement, earthwork and foundation design.

Engineering support for earthwork and foundations installation during construction, materials testing and post-construction performance monitoring.

David Hamilton

Role: Lead Geotechnical Engineer

President of Hamilton & Associates, David has over 22 years of broad engineering experience involving geotechnical and geological investigations for industrial, infrastructure, public works, commercial, and private projects. David taught Soil Mechanics and Foundations as well as Solid Waste Engineering in both the undergraduate and graduate civil engineering programs at Loyola Marymount University in 2002 and 2003. He has served on the California Geotechnical Engineering Association Board of Directors for 10 years. He has extensive experience in shallow and deep foundation design, slope stability analyses, pavement design, landfill design, and construction testing and inspection.

Education

MS Civil, Geotechnical Engineering,
University of California, Berkeley, 1995

BS Civil Engineering,
Loyola Marymount University, Los Angeles, 1994

Representative Projects

- Santa Monica Mixed-Use Hotel / Santa Monica, CA
- Beverly and Fairfax Mixed-Use Development / Los Angeles, CA
- Linnie Canal Front Residence / Venice Beach, CA
- Miraleste Drive Pavement Improvements / Rancho Palos Verdes, CA
- Hollywood Mixed-Use Development / Los Angeles, CA
- Santa Monica Residence / Santa Monica, CA
- Las Virgenes Village Shopping Center / Calabasas, CA

Simpson Gumpertz & Heger

Contact

Nathan Wittasek, Principal
1150 S. Olive Street, Suite 1600
Los Angeles, CA 90015
(213) 271 1932
NBWittasek@sgh.com

Simpson Gumpertz & Heger (SGH) is a national engineering firm that designs, investigates, and rehabilitates constructed works. They currently employ more than 650 staff members with 371 licensed professionals in offices in Boston, Chicago, Houston, New York City, San Francisco, Southern California, and Washington, D.C. Since 1956, their goals have been simple: earn the lasting trust of clients, gain the respect of capable peers, and further the standards of practice in all areas of the profession. For more than forty years, SGH has been providing design services to support libraries, community centers, and multifunctional buildings for public agencies in California. They've worked for multiple California public agencies and consulted on more than 1,200 public projects.

Nathan Wittasek

PE, LEED AP / Principal

Role: Code Consulting / Fire and Life Safety

Nate has more than 20 years of experience working in the fire protection and regulatory arenas. Nate brings a practical approach to the fire protection engineering field that reflects his diverse training and experiences in academia, codes consulting for both new and existing facilities, performance-based fire protection engineering, sustainable design, and the fire service. His experience includes failure analysis, fire engineering, systems design and building codes consulting. Nate has specialized in fire life safety systems and approaches that are used in libraries, community buildings, cultural heritage facilities, and historic structures.

Education

Worcester Polytechnic Institute, Master of Fire Protection Engineering
Worcester Polytechnic Institute, Bachelor of Civil Engineering

Professional Affiliations and Activities

Certified Access Specialist (CASp)

Certified Fire & Explosions Investigator (CFEI)

Deputy Building Inspector, Smoke Control, City of Los Angeles (P031371)

Hazardous Waste Operations and Emergency Response Training in accordance with OSHA 29

CFR 1910.120, 1926.65

LEED Accredited Professional

National Council of Examiners for Engineering and Surveying

Representative Projects

- Idyllwild Performing Arts Center / Idyllwild, CA* (project executed while at Arup)
- University of Utah Marriott Library / Salt Lake City, Utah
- Glendale Central Library / Glendale, CA
- Budokan Community Center / Los Angeles, CA
- Academy of Motion Pictures, Arts and Sciences Museum / Los Angeles, CA
- Asian Art Museum Renovation and Addition / San Francisco, CA
- California Museum of Science & Industry / Los Angeles, CA

Antonio Acoustics

Contact

Nick Antonio, Principal
 4487 Colbath Avenue, #306
 Sherman Oaks, CA 91423
 (310) 404 1833
 nick.antonio@antonioacoustics.com

Established early in 2016, Antonio Acoustics provides full service acoustic consultancy in Southern California drawing on 30 years experience. As a small local business its size and location allows it to provide specific local commitment and dedication to projects.

The Firm has been established on several key principles including quality work, total design, straight and honorable dealings, social usefulness and reasonable prosperity.

Antonio Acoustics enjoys working to provide a maximal acoustic environment for public projects including a number of local public library, education, social and transportation spaces.

Nick Antonio

Principal

Role: Lead Acoustic Design

Nick Antonio has always been fascinated by acoustics and spaces for listening. He originally began his career in London as a consultant with the acoustic group of Arup, the engineering consultancy designing a number of spaces including speech and lectures, one of the most well known being the new home for the British Library. After a few years working for the British Government Building Research Establishment, advising on Code, design of public spaces and assessment of noise, he rejoined Arup, leading the US Los Angeles Acoustic Group. In 2016 he started Antonio Acoustics.

Education

John Moores University, Liverpool, BSc (Hons) Applied Physics

Professional Affiliations and Activities

Fellow Institute of Acoustics

Member Acoustical Society of America

Member Institute of Noise Control Engineers

Chartered Engineer

Treasurer ASA Los Angeles Chapter

Affiliate AIA LA

Member AIA LA COTE

Member AIA LA Healthcare Group

INCE Contributor to ANSI/ISO Acoustic Standards

Representative Projects

- Idyllwild Arts Academy, William Lowman Concert Hall / Idyllwild, CA* (project executed while at Arup)
- Riverside Library / Riverside, CA
- Jesuit High School Chapel of the North American Martyrs / Sacramento, CA*
- British Library / London, UK
- John Moores University Library / Liverpool, UK
- Wende Museum / Culver City, CA
- LACMA Broad Contemporary Art Museum / Los Angeles, CA
- LACMA Resnick Pavilion / Los Angeles, CA
- Pasadena Arts Center / Pasadena, CA
- UCLA UNEX / Los Angeles, CA

Capital Projects Group

Contact

Chris Sterparn, PA, Principal
700 S. Flower St.
Los Angeles, CA 90017
(213) 418 0201
tom.gsell@kpff.com

KPFF has been providing civil engineering services in LA for over two decades. Established in 1960, KPFF has offices in Los Angeles, Irvine, San Diego, Sacramento, San Francisco, Long Beach, Boise, Seattle, Tacoma, Everett, Lacey, Portland, Eugene, St. Louis, New York, and Louisville. KPFF employs more than 1,198 professionals, including more than 520 structural engineers and 260 civil engineers. KPFF has significant project experience on the UCLA campus and relationships with UCLA staff. On this project, KPFF will evaluate existing site conditions including ADA code compliance, verify adequacy of building wet utility services and prepare design of upgrades if required.

Chris Sterparn

B.Sc. Eng, MBA, LEED AP / Principal
Role: Cost Estimator

Chris is the Founder and Managing Principal of The Capital Projects Group, a comprehensive consulting practice that provides client-oriented solutions across a broad spectrum of capabilities. Chris has broad and deep experience within the public/civic, library, and education sectors. Chris has provided consulting solutions through the entire building life cycle, with an emphasis on strategy, evidence-based decision-making; capital planning; budget development; cost modeling; value engineering and value management; bid evaluation and analysis, life-cycle cost analysis (NPV and IRR analysis); and Total Cost of Ownership Evaluation, on projects ranging in size from under \$1 Million to over \$1 Billion.

Education

University of Southern California, MBA, Marshall School of Business
Queen's University, Bachelor of Science in Civil Engineering

Professional Affiliations and Activities

Association for the Advancement of Cost Engineering (AACE)
AIA Los Angeles, Allied Affiliate Member (AIA)
Construction Management Association of America (CMAA)
Rebuilding Together for Greater Los Angeles, Past President

Representative Projects

- 29 Palms Theater / Twentynine Palms, CA*
- Robert E Kennedy Library Renovation, California Polytechnic State University / San Luis Obispo, CA
- Powell Library Renovation and Additions , University of California, Los Angeles / Los Angeles, CA
- Mary Norton Clapp Academic Commons, Occidental College / Los Angeles, CA
- Classroom Building Renovation, California State University, Dominguez Hills / Dominguez Hills, CA
- Lewis Hall Renovation, University of Southern California / Los Angeles, CA
- Holland Community Aquatic Center / Holland, MI
- EMJ Event Center / Los Angeles, CA

*Collaboration with Sander Architects or Mithun | Hodgetts + Fung

Newport Beach Library Lecture Hall

Architecture

Sander Architects (Executive Architect)

Whitney Sander, Principal in Charge
Jason Zhang, Project Manager

Mithun | Hodgetts + Fung (Design Architect)

Craig Hodgetts, Design Partner
Hsinming Fung, Quality Assurance
Darin Vieira, Design Project Manager

Consultants

Mithun (Landscape Architecture)

Nous Engineering (Structural)

All Trade Engineering (MEP)

DCi Engineers (Civil)

Hamilton & Associates (Geotech)

Antonio Acoustics (Acoustics)

Simpson Gumpertz & Heger (Fire/Life Safety, Code)

The Capital Projects Group (Cost Estimating)

4. Team Organization

Identify the project team, including organizational chart and resumes of each team member. The consultant's primary representative shall be a California licensed architect, and shall be readily available for discussion with City staff.

Architecture

The fully integrated Sander Architects and Mithun | Hodgetts + Fung team proposes to exploit the creative synergy of our two offices to produce a design for an exciting and timeless Library Lecture Hall. This is no ordinary project. Its site, adjacent to the trend-setting City Hall, and with significant visibility from heavily-traveled Avocado Boulevard, calls for an appealing and powerful presence to mark the civic domain. As architects whose work is often in the realm of entertainment, and primarily within campus settings, we are committed to the creation of places which inspire collaboration and learning, and hope to bring those values to your project. Our approach will be to collaborate fully on the four concepts to be presented to the City, which will express not only the exterior design and relationships of the project, but also various

aspects of the interior, with an emphasis on the use of natural light, and strategies to accommodate dance and music recitals. Thereafter, we plan to focus the work according to the experience and skills of our offices:

- Sander Architects will take prime responsibility for the development of the exterior architecture, code compliance, construction documents, and construction observation, due to their experience in projects of similar size and complexity.
- Mithun | Hodgetts + Fung will take prime responsibility for program development, interior architecture, and landscape due to their experience in developing spaces for similar projects in the performing arts and civic and sacred places.

Integration of this work will take place continuously throughout the design process, and ultimately in the construction documents phase, during which systems interfaces—primarily HVAC, electrical, and structural, will be refined and documented. A detailed task list will form the basis of each firm's scope.

Whitney Sander

Principal

Role: Principal in Charge

Whitney will be the day-to-day project contact and provide overall design leadership for the LLH.



Education

Yale University, New Haven, MArch

Yale College, New Haven, BA Architecture

Registration

California Architects Board, No. 20158

NCARB, No. 76701

Professional Affiliations and Activities

American Institute of Architects (AIA)

Principal of Sander Architects, Whitney brings a unique combination of artistic vision, budget awareness, and creative problem solving to every project. His approach can be experienced in all of his work, including the William M. Lowman Concert Hall, Idyllwild Community Center Amphitheater and St. Kitt's Biomedical Research Foundation. Following graduation from Yale University's School of Architecture, Whitney served in the Peace Corps in West Africa from 1981 to 1983. While Yale fostered his aesthetic and intellectual development, the Peace Corps solidified his dedication to civic, humanitarian, and social causes, and to buildings grounded in economy and efficiency. Since 1991, Whitney has taught Architecture and Art classes at Yale, UC Berkeley, California College of the Arts (San Francisco), and Woodbury University.

Representative Projects

William M. Lowman Concert Hall / Idyllwild, CA

Principal in charge and designer of an 8,150 sf concert hall completed for just \$4.3 million for the Idyllwild Arts Academy. SA finished the project on time and within the client's budget, utilizing their Hybrid Construction Strategy with a pre-engineered metal building frame, and other economical elements from the earliest stages of design.

Idyllwild Community Center Amphitheater / Idyllwild, CA

Principal in charge and designer of an amphitheater for outdoor performances in the heart of Idyllwild, CA. Worked with the acoustical engineer to provide an appropriate form and function to expand the Idyllwild community's' music offerings and remain at the center of the Los Angeles musical community.

Crown Recycling Services / Sun Valley, CA

Principal in charge and designer of a 260,000 sf recycling facility. This project encloses an existing Recycling Facility and is being constructed while the facility is in continuous operation. A contemporary exterior design is consistent with the updating of this simple utilitarian facility.

St. Kitts Biomedical Research Foundation / St. Kitts, VI

Principal in charge and designer of a 12,000 SF renovation and addition to a 300-year-old cotton storage warehouse, combining an historic building with a modern science research laboratory. A new pre-engineered metal framed roof sits on top of rock walls and can withstand 150-mph hurricane winds while a new building provides space for a growing research program.

Craig Hodgetts

Partner / FAIA

Role: Design Partner

Craig will lead the interior design and programming for the LLH.



Education

Yale University School of Art and Architecture, MArch

Registration

Architect: CA

NCARB

Professional Affiliations and Activities

American Institute of Architects (AIA)

Partner at Mithun | Hodgetts + Fung, Craig's background in theater arts, automotive engineering and architecture, allows him to bring a singular synergy to the design of challenging environments for performance. Craig has created legacy projects for the California Institute of the Arts, Art Center College and Occidental College. His creative direction of a celebrated exhibition showcasing the Case Study program was followed by a series of landmark civic and cultural facilities including the Hollywood Bowl and the UCLA Gateway. In the years since, he has been granted patents for a mobile logistics center, a prefabricated classroom and an evacuated tube structure for the hyperloop system. A prolific writer, he has contributed essays and observations to the *Los Angeles Times* and *Cosmopolitan Magazine*.

Representative Projects

Robert Frost Auditorium of Culver City High School / Culver City, CA

Principal in charge and creative director for reconfiguration of systems within an historic structure in order to create a true multifunctional performance center within the constraints of the original geometry and material palette.

Wild Beast of California Institute of Arts / Valencia, CA

Principal in charge and creative director for a 2,450 sf dynamic performance space. Collaboration with structural engineer Bruce Gibbons resulted in creation of a monocoque configuration which emulates the acoustic environment of a musical instrument, resulting in a unique union of form and musical artistry.

Egyptian Theater / Hollywood, CA

Principal in charge for rehabilitation of 40,000 sf historic theater, meticulously restored to its original appearance. Every aspect of the theater's operation—projection, sound, seating, and mechanical systems—were brought up to 21st century standards.

Hollywood Bowl / Hollywood, CA

Principal in charge and creative director responsible for leading the design of a new orchestra shell designed to accommodate a full spectrum of musical genres, including a one-of-a-kind "Acoustic Halo" capable of optimizing the sonic response to suit ensembles, a full orchestra or jazz.

Menlo Atherton Performing Arts Center / Atherton, CA

Principal in charge and creative director, noted the importance of the legacy oak trees surrounding the site and successfully created structural and aesthetic references to their majesty. Understood the dual role of the project and devised rewarding solutions.

Ascend Amphitheater / Nashville, TN

Creative director for state-of-the-art 49,000 sf amphitheater inspired by the city's collection of noble limestone buildings and iron bridges. Project included collaboration with landscape architect Kim Hawkins to create sympathetic outbuildings and promenades.

Hsinming Fung

Partner / FAIA

Role: Design Quality Assurance

Ming will provide overall quality assurance for the design of interiors for Mithun | Hodgetts + Fung.



Education

Master of Architecture, University of California, Los Angeles
Bachelor of Arts, Behavioral Sciences, California State University, Dominguez Hills

Registration

California Architects Board, No. 21180
NCARB, No. 71820

Professional Affiliations and Activities

American Institute of Architects (AIA)

Hsinming's design practice is energized by her lifelong commitment to the arts and education. Ming brings purpose, creativity and high production standards to an architectural practice widely admired for innovation and experimentation. As design director, Ming has utilized a refined design palette towards the realization of each project including the award-winning temporary Towell Library at UCLA, the 50-acre master plan for the Los Angeles Arts Park, and the Menlo-Atherton Performing Arts Center. Among her recent projects are a new performing arts center at CalArts and the design of the Chapel of the North American Martyrs in Sacramento. As a leading figure in architectural education, she is in demand world-wide as a critic and lecturer.

Representative Projects

Wild Beast Pavilion at California Institute of Arts / Valencia, CA

Design director to establish the footprint and location of the 2,450 sf performance space and design including massing and performance attributes, cladding and fenestration, in addition to direction of construction documentation.

Robert Frost Auditorium of Culver City High School / Culver City, CA

Design director for initial studies of spatial configuration to achieve project goals of principle performance space and experimental black box. Orchestrated design process to achieve an aesthetically rewarding combination of technical and structural interventions within a constrained budget.

Jesuit High School Chapel of the North American Martyrs / Sacramento, CA

Design director for 10,478 sf chapel including a sanctuary seating for up to 350 people and smaller devotional spaces.

Menlo Atherton Performing Arts Center / Atherton, CA

Design director establishing design principles for 31,209 sf PAC from competition phase to final concept, including the creation of intricate laser-cut acoustic panels and faux main curtain pattern.

Sinclair Pavilion at Art Center College of Design / Pasadena, CA

Design director for 2,000 sf outdoor pavilion and lounge with coffee bar and student gallery to enhance student interaction.

UCLA Towell Library / Westwood, CA

Design director for a temporary library that served the comprehensive functions of UCLA's Powell Library while a five-year seismic retrofitting operation was underway.

California Design Los Angeles County Museum of Art / Los Angeles, CA

Design director working with curatorial staff to create narrative and orchestrate collection installation with special attention to museum display guidelines established protocols for lighting and display, including gradient illumination according to preservation guidelines.

Catherine Holliss

Director of Interior Design

Role: Interior Design Support and Coordination

Catherine will support the Mithun | Hodgetts + Fung team on interior design integration.



Education

University of California Los Angeles, MA
Screenwriting

Concordia College, Montreal, Canada, BA

Catherine infuses every project with a spirit of creativity and a honed eye. After extensive coursework in the UCLA Extension Interior Design Certificate Program, she joined Sander Architects, LLC, in 2003. Since that time, she has had a hand in the interior design of nearly every project in the office, including the William M. Lowman Concert Hall, Idyllwild Community Center Amphitheater, and numerous commercial and residential projects. Catherine is recognized as a leader in green materials and design and has been invited to sit on several green design panels. She regularly guest lectures at UCLA and other universities.

Representative Projects

William M. Lowman Concert Hall / Idyllwild, CA

Interior designer of all spaces of an 8,150 sf concert hall. Given the client's tight budget, Catherine performed extensive research to find the most aesthetic and cost effective materials and fixtures possible. This resulted in better solutions than would have been imagined on an unlimited project budget.

Idyllwild Community Center Amphitheater / Idyllwild, CA

Interior designer of an amphitheater for outdoor performances in the heart of Idyllwild, CA. Catherine selected materials that balanced acoustic performance with the overall aesthetic concept of keeping the amphitheater contextual. She also worked on the programming of the outside area, including seating and circulation logistics.

St. Kitts Biomedical Research Foundation / St. Kitts, VI

Interior designer of the renovated spaces and building addition of this science research facility. Catherine maintained the integrity of the historic structure while modernizing interior spaces to serve the programmatic functions of a science laboratory.

Crown Recycling Services / Sun Valley CA

Interior designer of the staff spaces of this recycling facility, including the break room, dining areas, and patio. Catherine selected materials and furniture with recycled content to reflect the company's mission. She also consulted on the building's exterior design and worked on graphic branding strategies.

Jason Zhang

Associate

32

Role: Project Manager



Education

University of California Los Angeles, MArch
Chang'an University, Xi'an, China, BA
Architecture

Professional Affiliations and Activities

American Institute of Architects (AIA)

Jason is a highly motivated designer with a culturally diverse background. His interest in pursuing tangible and economical architecture took him to Sander Architects, where he has managed projects at all scales, including the William M. Lowman Concert Hall in Idyllwild, the 270,000 sf Crown Recycling Services, and the Idyllwild Community Center Amphitheater. He has developed a unique understanding of design and fabrication from studying wood construction in China and researching multidisciplinary topics at UCLA under the tutelage of renowned architect Craig Hodgetts. He also worked as a high-tech fabricator, and has enjoyed assisting colleagues with technically challenging designs that require his attention to detail.

Representative Projects

William M. Lowman Concert Hall / Idyllwild, CA

Project manager for the 300-seat new concert hall for Idyllwild Arts, involving the coordination of a pre-fabricated metal building system and exterior metal cladding into the building's overall design. He was also responsible for code compliance and consultant coordination.

Idyllwild Community Center Amphitheater, / Idyllwild, CA

Project manager for the 5,400 sf outdoor performing stage and seating area in the San Jacinto Mountains. Jason integrated many factors in this project, including prefabricated steel construction, delicate sound design, and a challenging steep site, to create a performance space for the community.

Crown Recycling Services / Sun Valley CA

Project manager responsible for the complex coordination of construction documents and consultant drawings for a 260,000 sf recycling center. The project involves the integration of giant material recovery lines, garbage conveyors, 60-foot high cranes, multiple driveways, and ADA access.

Darin Vieira

Senior Associate

Role: Design Project Manager



Education

Southern California Institute of Architecture, MArch

University of Southern California, BA

Darin's project contributions have translated to successful execution of visionary design at multiple scales—from exhibition design to education, commercial and civic projects including the Nashville Ascend Amphitheater, Robert Frost Auditorium and Jesuit High School Chapel. Darin drives the firm's projects across multiple sectors to enhance critical cultural, learning and social interaction. Darin strategizes collaborative, engaged design and delivery processes that draw deeply on a commitment to partnering with clients and fostering a shared understanding of project requirements and design intentions. His leadership from concept to fully realized projects is rooted in dedication to client engagement and feedback, and is bolstered by his direct engagement with contractors and specialty fabricators to deliver imaginative design solutions.

Representative Projects

Robert Frost Auditorium of Culver City High School / Culver City, CA

Design lead for stage house architectural design and technical coordination with structural and theatrical consultants for the renovation of the 1962 concrete shell auditorium.

Jesuit Chapel / Sacramento, CA

Design team leader and consultant coordination, producing construction documents for every aspect of the 10,000 sf chapel— from the liturgical furnishings to the unique play of light introduced by custom pocket windows—with attention to the student and faculty's desire for a contemplative yet modern and uplifting structure to be at the heart of campus life.

Ascend Amphitheater / Nashville, TN

Design team leader and BIM director for the landmark 6,500 seat performance venue boasting a 100' x 50' stage house, artist wing and V.I.P. club accommodations, referred to affectionately as "Nashville's new front porch" by the Mayor Karl Dean.

Building Blocks Modular Classrooms for LAUSD / Los Angeles, CA

Project designer for the innovative modular classroom designed for rapid construction mobility, utilizing a patented structural fiberglass roofing system with integral lighting and daylight control.

Sunset Commercial Development / West Hollywood, CA

Design team lead for a 24,000 sf office and retail development at the intersection of Sunset / La Cienega, currently under permit review with construction anticipated to begin in Summer 2018.

Rosa Parks Metro Station / Los Angeles, CA

Project designer for the renovation of the existing Metro station in Watts, which would introduce a public plaza with retail and restaurants.



William M. Lowman Concert Hall
Idyllwild Arts Academy / Idyllwild, CA

5. Workplan

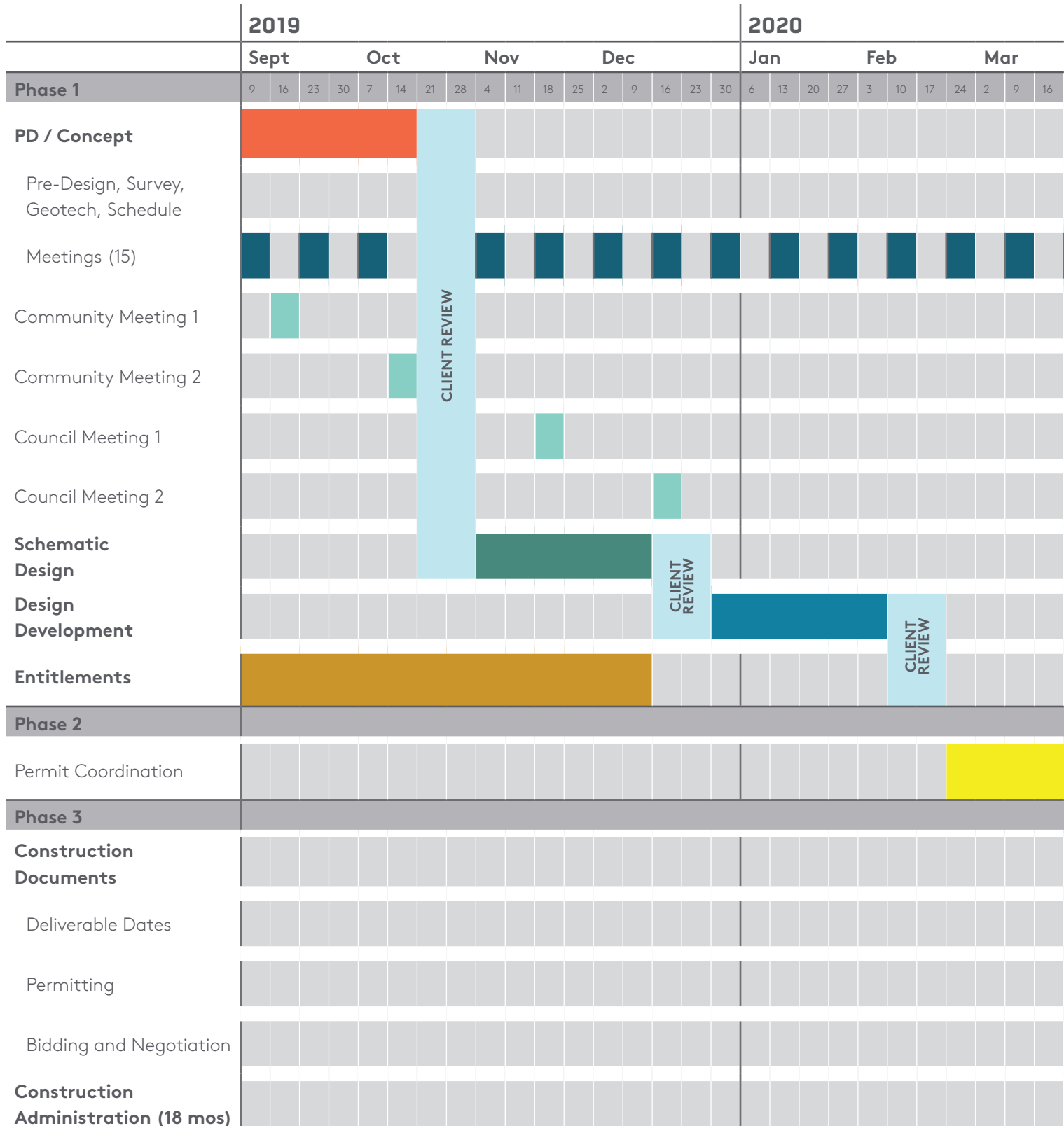
Specific responsibilities of each team member, including subconsultants, along with their anticipated total effort in the project, shall be detailed in a matrix of total hours of work for each task versus each job classification on the project.

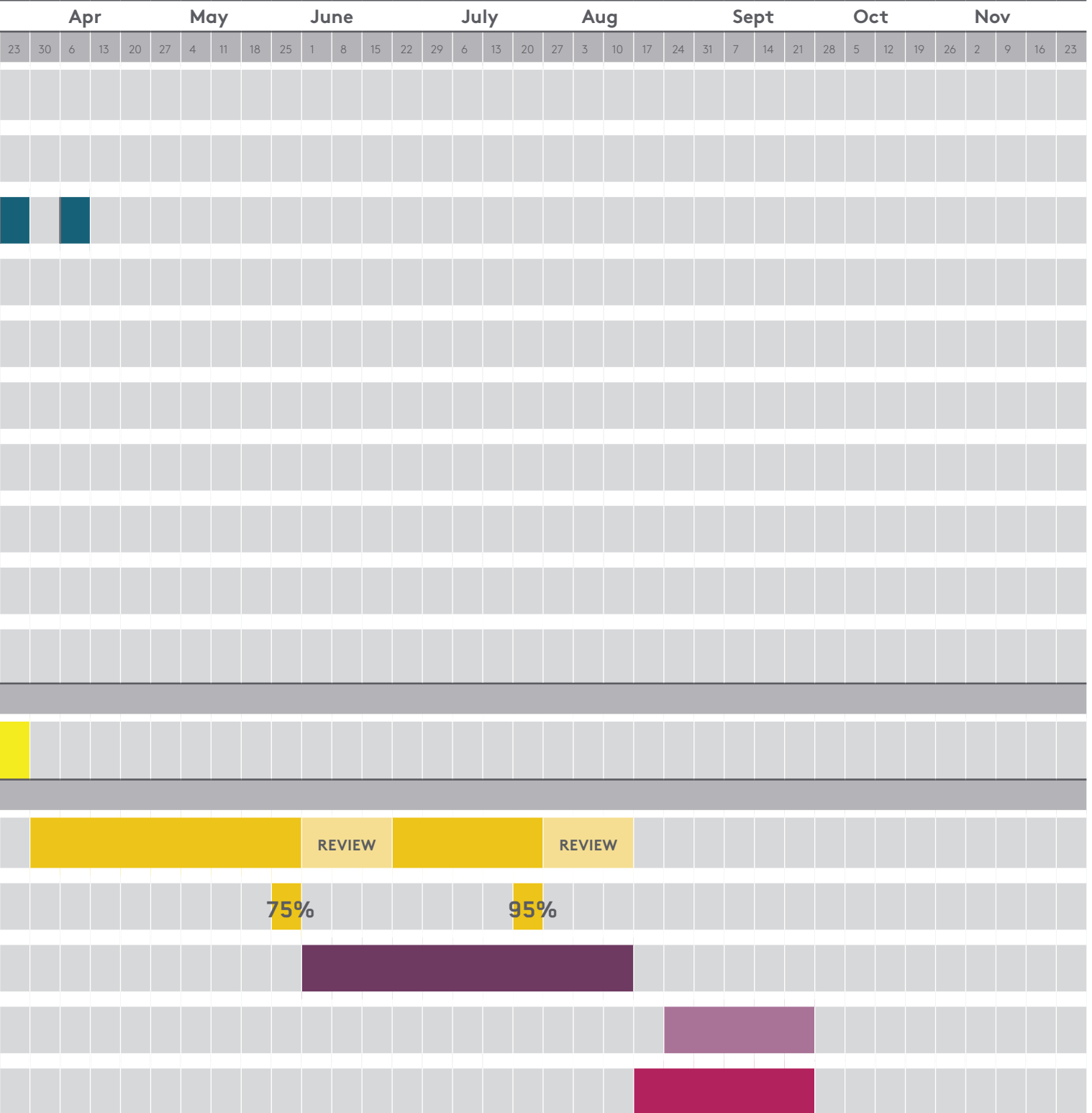
Please see schedule on the following page for detailed tasks per phase.

Team Member	Responsibilities	Concept	SD	DD	CD	Permit	CA	Total
Whitney Sander	Principal	48	48	48	28	2	35	209
Craig Hodgetts	Design Partner	24	24	24	65	0	70	207
Hsinming Fung	Design Quality Assurance	12	12	12	0	0	0	36
Darin Viera	Design Project Manager	72	72	96	224	15	140	619
Jason Zhang	Project Manager	48	48	96	224	75	840	1331
Staff TBD	Specification	0	0	24	56	0	0	80
Staff TBD	Document QAQC	0	0	0	80	0	0	80
Staff TBD	Production (II)	240	180	240	560	0	800	2020
Staff TBD	Production	0	180	240	560	0	0	980
Staff TBD	Admin Support	6	6	6	14	0	0	32
Matthew Melnyk	Nous / Structural Engineer (EOR)	0	8	24	32	8	24	96
Anna Tam	Nous / Senior Engineer	0	24	40	80	0	16	160
Megan Hanson	Nous / BIM Manager	0	0	0	40	0	0	40
Shane Judd	All Trade / Mechanical Engineer	0	20	30	30	9	20	109
Staff Level	All Trade / Mechanical Engineer Production	0	0	20	20	0	0	40
Joseph Nasr	All Trade / Electrical Engineer	0	20	30	30	10	30	120
Staff Level	All Trade / Electrical Engineer Production	0	0	30	40	0	0	70
Shane Judd	All Trade / Plumbing Engineer	0	10	20	20	5	15	70
Staff TBD	All Trade / Plumbing Engineer Production	0	0	40	40	0	0	80
Alberto Rossel	DCi / Civil Engineer / Surveyor	36	37	39	147	0	25	284
Nathan Wittasek	Code, Fire, Life Safety	0	44	46	60	0	0	150
Nick Antonio	Acoustic Design	0	26	36	22	20	0	104
Chris Sterparn	Principal Cost Consultant	0	4	8	8	0	0	20
Carol Rambaldi	Associate Cost Consultant	0	8	16	20	0	0	44
Kartika Bashani	Cost Consultant	0	8	16	40	0	0	64

6. Project Schedule

Our team has noted that we should plan for up to 15 community meetings. As there may be a different emphasis for some, we will create a basic information “backbone” to which more specialized diagrams or renderings may be added. With regard to the allowance for review time by the LLH Committee, our offices will focus on matters which will move the project forward to adequately meet these schedule deadlines.







Seattle Preparatory School Performance
and Lecture Hall / Seattle, WA

7. Scope of Work

The Consultant will provide complete design services for the project in accordance with the latest California Building Code (2019), City-approved Standard Specifications for Public Works Construction (2015 Edition) and the City of Newport Beach Design Criteria, Standard Special Provisions and Standard Drawings (2004 Edition), including supplements.

Phase 1

- Attend meetings, including:
 - » Predesign, 15 design meetings, and two evening/weekend community information meetings with exhibits
- Four Concept Schemes
- Design Schedules
- Field Review of Facilities
- Preliminary Construction Documents, in support of the Phase I design process
- Preliminary Cost Estimate
- Submittals, including:
 - » Concept, Schedule, Site Research, Programming and Master Plan
- Supplemental Information including:
 - » ALTA Survey, Energy-efficient strategies, Savings-by-design strategies
- Consultant information to be included and assessed:
 - » Geology, Civil, Structural, MEP, T24, Landscape, Acoustics, Lighting, Fire/Life Safety, Cost Estimating

Phase 2

- Provide documents outlining Permit Schedule and Strategy
- Water Quality Management Plan (WQMP)
- Review documents with appropriate entitlement agencies
- Obtain City Entitlements and Permits: Planning, Building, AQMD, WQMP, and Irvine Company
- Obtain all other required Permits and Approvals

Phase 3

- Construction Documents including Drawings and Specifications to enable a licensed
 - » Contractor to bid on and subsequently construct the project. Drawings will reflect the City's standard template as outlined in the RFP
- CD's will include documents from the Consultant Team
 - » Geology, Civil, Structural, MEP, T24, Landscape, Acoustics, Lighting, Fire/Life Safety
- Documents will be provided for review at 75%, 95% and 100% completion stages.
- Construction Administration:
 - Attend Bi-Weekly Meetings to monitor construction progress to ensure that construction is proceeding in a manner that is consistent with the intent of the Construction Documents
 - Review Shop Drawings
 - Provide field recommendations in response to construction reviewed on site

Additional Services

The following peripheral site elements will be considered as part of Phase I, and will be included in our scope and fee. Work relating to these elements in Phase II and III will be considered as Additional Services:

- Pedestrian Bridge
- Modifications to Bamboo Courtyard
- Modifications to existing detention swale under the north side of the building site
- Parking lot redesign

8. Suggestions

40

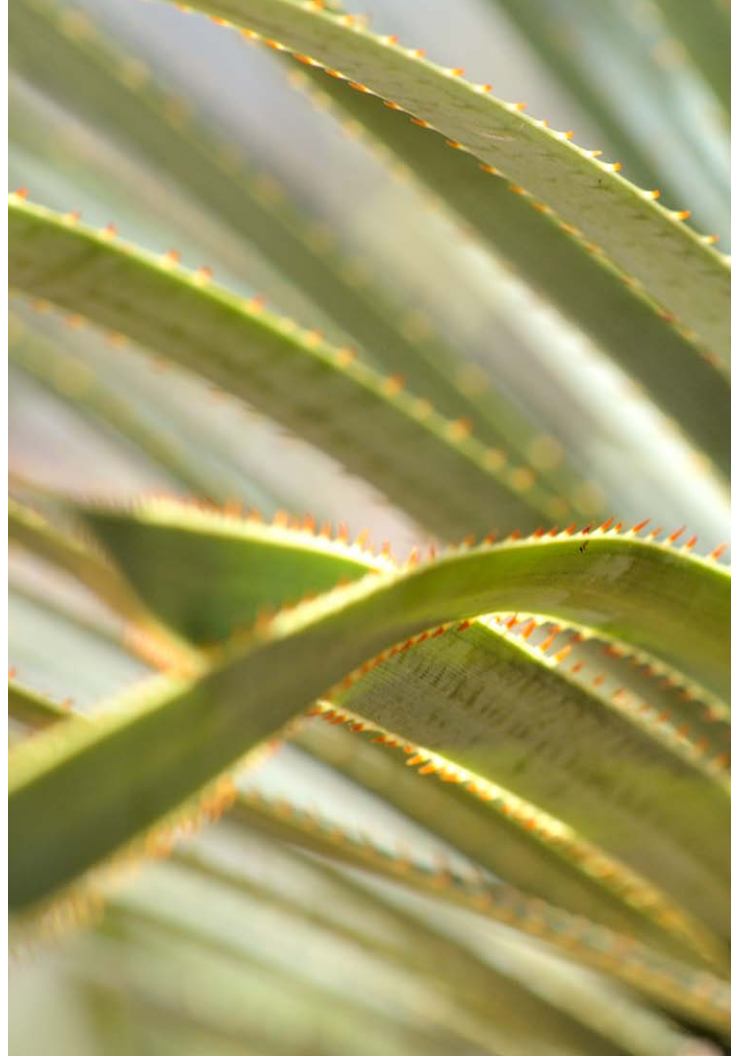
Suggestions of additional tasks to improve the project or for reducing costs.

Our team has extensive experience with alternate construction strategies that have the capacity to reduce costs. Possible alternate/current structural approaches include:

- Pre-engineered metal buildings
- Standardized, off-the-shelf trusses combined with HSS tube columns
- Wood Timber Construction

Based on the direction/orientation of the the project site, we intend to investigate alternate air conditioning strategies including passive cooling and heating, super-insulating the shell (which will also help with acoustical considerations), and the use of the latest solar harvesting technologies.

The existing pedestrian bridge from Avocado Boulevard intersects the proposed building site in an awkward way. We believe that, if treated creatively and intelligently, the bridge can be an inviting, far more formal invitation/entry to the Library and City Hall campus. We imagine this to be integral to the success of the new building's intervention.



9. Fee Proposal

A Not-to-Exceed Fee for the services to be provided and current fee schedule for each job classification (design team and subconsultants) that will remain valid for the duration of the project. These items shall be submitted in a separate, sealed envelope. The fee shall be broken down showing hours for each job classification (design team and subconsultants) for each task, fee for each task, and shall include miscellaneous costs such as travel, duplication, clerical support, etc. The City reserves the right to eliminate any task from the scope of work, and reduce the not to-exceed fee by the cost of the task eliminated.

Please see fee proposal in the envelope enclosed.

sander architects

13274 Fiji Way, Suite 150
Marina del Rey, CA 90292

MITHŪN | HODGETTS + FUNG

5837 Adams Blvd
Culver City, CA 90232