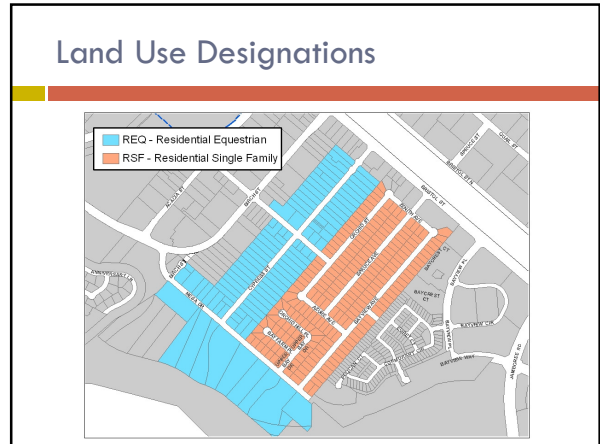


**SANTA ANA HEIGHTS**  
Equestrian Community Meeting

Community Development Department



### Best Management Practices

### Unique Characteristics of a Unique Community- Santa Ana Heights

- By implementing BMP's, to the maximum extent practicable, in conjunction with the keeping of horses and ponies, we protect our environment and preserve good neighbor relationships.

### Regulatory Background

- Clean Water Act → National Pollution Discharging Elimination System (NPDES)
- State Water Resources Control Board → Santa Ana Regional Water Quality Board
- Santa Ana Regional Water Quality Board → Newport Beach The Permittee

### Joint Effort of the City & Equestrian Community

- By continuing the community's good neighbor practices already in place, we can work together to ensure mandatory state standards are met and we keep our water clean.

## Working Together for Clean Water

- What the City can do....
  - ▣ Construction site BMP's
  - ▣ Dredging Projects
  - ▣ Urban Runoff Reduction Education
- What you can do...
  - ▣ Best Management Practices for Property Maintenance

## Property Maintenance

- Stalls, corrals, and wash areas should be cleaned on a regular basis.
- Manure should be removed on a daily basis to a proper weatherproof waste container.



## Property Maintenance

- Store waste containers on an impervious surface (either concrete pad or asphalt)
- During rains store waste container under cover to prevent leaching or runoff of pollutants.



## Property Maintenance

- Separate waste container areas with buffer strips of vegetation or berms to filter sediments and absorb nutrients in runoff and prevent from entering into storm drain systems via the street gutter.



## Property Maintenance

- Chemicals: Follow directions for all chemical applications and dispose of unused chemicals at a household hazardous waste facility.
- Call OC Waste and Recycling at (714) 834-6752 for more information. Nearest locations are Huntington Beach and Irvine.
- Refuse: Collect and dispose of trash and debris.



## Grooming

- Use less-toxic alternatives for grooming. Even biodegradable products can be harmful to marine life and the environment.
- Follow instructions on the products and clean up spills.



## Grooming

- When washing horses, either allow washwater to seep into the ground or be routed to the sanitary sewer. Do not let washwater enter the storm drain.
- Conserve water by using a spray nozzle with an automatic shut-off. Turn off the water when not in use.



## Dust Control

- Implement a program for continuous dust control.
- Light water, chemical products, or organic products may be used:
  - ▣ Dusty conditions within an arena can contribute to respiratory problems in livestock, horses and people.
  - ▣ Basic Cal EPA requirements include light watering or use of hygroscopic materials.
    - ArenaClear
    - ArenaKleen
    - ArenaPro



## A little goes a long way...

- The additional benefits of implementing Best Management Practices on properties with horses or ponies include: a healthier horse environment, better conditions, and enhancement to the overall Santa Ana Heights community.



Questions?



Community Development Department