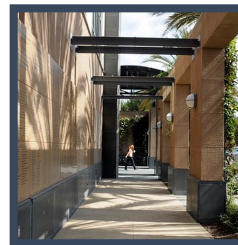
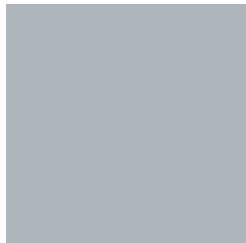
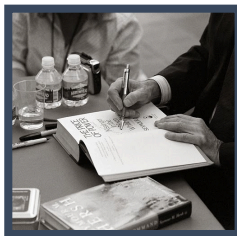
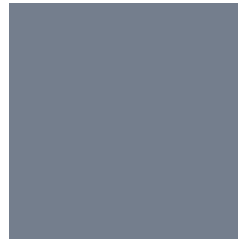
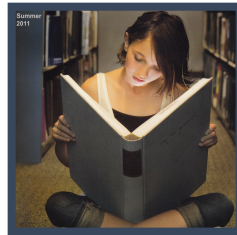
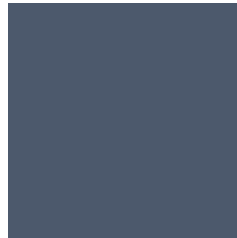




NEWPORT BEACH PUBLIC LIBRARY FOUNDATION





NEWPORT BEACH PUBLIC LIBRARY FOUNDATION

who we are

Established in 1989 as a collaborative public-private partnership with the city of Newport Beach, California, the Newport Beach Public Library Foundation provided the funds that enabled the Central Library to be built in 1994.

The Foundation has continued to increase its membership as well as its ability to supplement tax-based funding for the city's Central library and its three branches (Mariners, Balboa and Corona del Mar). Its efforts have provided the essential financial support that funds the library's priorities and drives its innovative community programs and services.

The Foundation's strength also lies in the city's many community volunteers, whose dedicated service and generous contribution of time, talent and resources have helped develop the Newport Beach Public Library into a world-class facility.

Since 1997, the Foundation has raised and contributed \$3,597,336 to the Newport Beach Public Library.



what we do

The Newport Beach Public Library Foundation funds valuable library resources and programs -- engaging the community in cultural and intellectual adventure through the sponsorship of diverse public programs and cutting-edge library enhancements.

So what does that mean exactly? **It means that we raise crucial funds for the library.** The library's budget from the city has only 12% of funds allocated to materials (items available for check out); the remainder (more than \$150,000 annually) is provided by the Foundation.

We also spearhead cultural and literary events (like the Witte Lecture Series) -- that have put the library on the map and have included celebrated authors like George Plimpton, Tom Brokaw, Michael Pollan, Jared Diamond, Robert Gates, Lisa See, Frances Mayes and many, many more.



top ten in the last ten

Ten significant items that have been made possible by the NBPLF in the last ten years include:

1. **Millennium Integrated Library System:** state of the art cataloguing for all the materials at the Newport Beach Public Library. \$225,000
2. **Self Checkout Machines:** \$30,000
3. **Essentials:** new Popular Library desk, all new shelving, furniture, computers: \$50,000
4. **Mariners Migration:** the Mariners Elementary School library had to be integrated into the Newport Beach Public Library when it was connected during the branch remodel in 2006. Major support for the opening of the Crean Mariners Library (adult/children's materials and grand opening celebration for community)
5. **E-commerce:** to allow customers to handle library transactions online (fees, etc.)
6. **Collection Materials:** such as books, audio books and children's picture books, Blu-ray discs, DVD's and more.
7. **Increased bandwidth:** for faster Internet connections, downloads, etc.
8. **E-readers (iPads, Nooks and Kindles):** for customers to check out and for demonstration purposes; providing much-needed education about the new e-reader formats
9. **WiFi:** wireless Internet access at the Central Library
10. **NY Times and LA Times historical databases:** heavily used by students, genealogists and history buffs.



the role of the modern library

As the role that hardcover books play in our lives changes, so too does the role of public libraries. Much has been made about the future of the public library, with questions about its current place in our world.

The surprising reality is the Newport Beach Public Library is more relevant now than it has ever been. The proof is in the numbers: more people are using the library today than ever before. They may be using it in slightly different ways, but they're using it -- both online and in person.

The next page highlights a comparison of library activity, then and now.



the newport beach public library: then and now

THEN

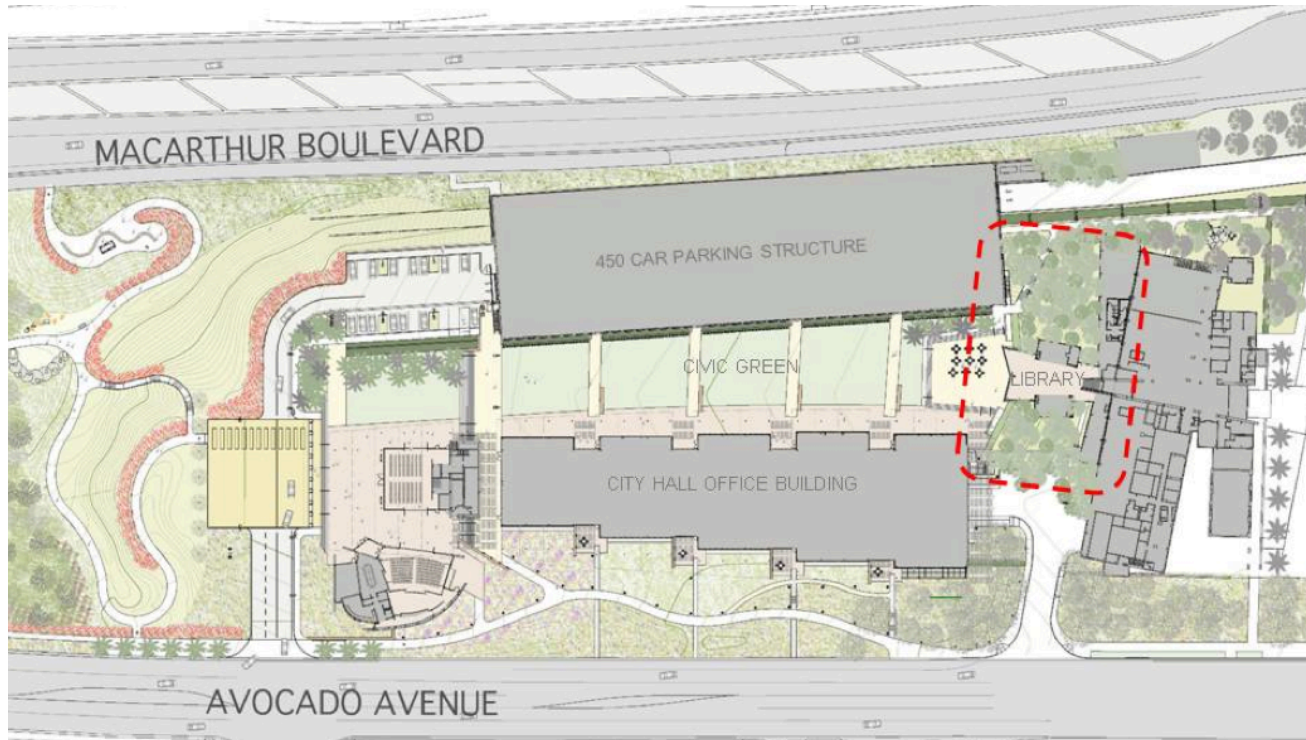
- checking out books
- reference librarians
- quiet study areas

NOW

- state-of-the-art computers, laptops and scanners
- WIFI
- eReaders/free downloadable eBooks & audiobooks
- high-profile speakers/authors on national book tours
- financial planning workshops
- moderated book groups
- speaker podcasts
- dvds, Blu-ray discs, foreign film collection
- children's computers & programs for all ages
- celebrity chefs' cooking classes
- checking out books
- reference librarians
- quiet study areas



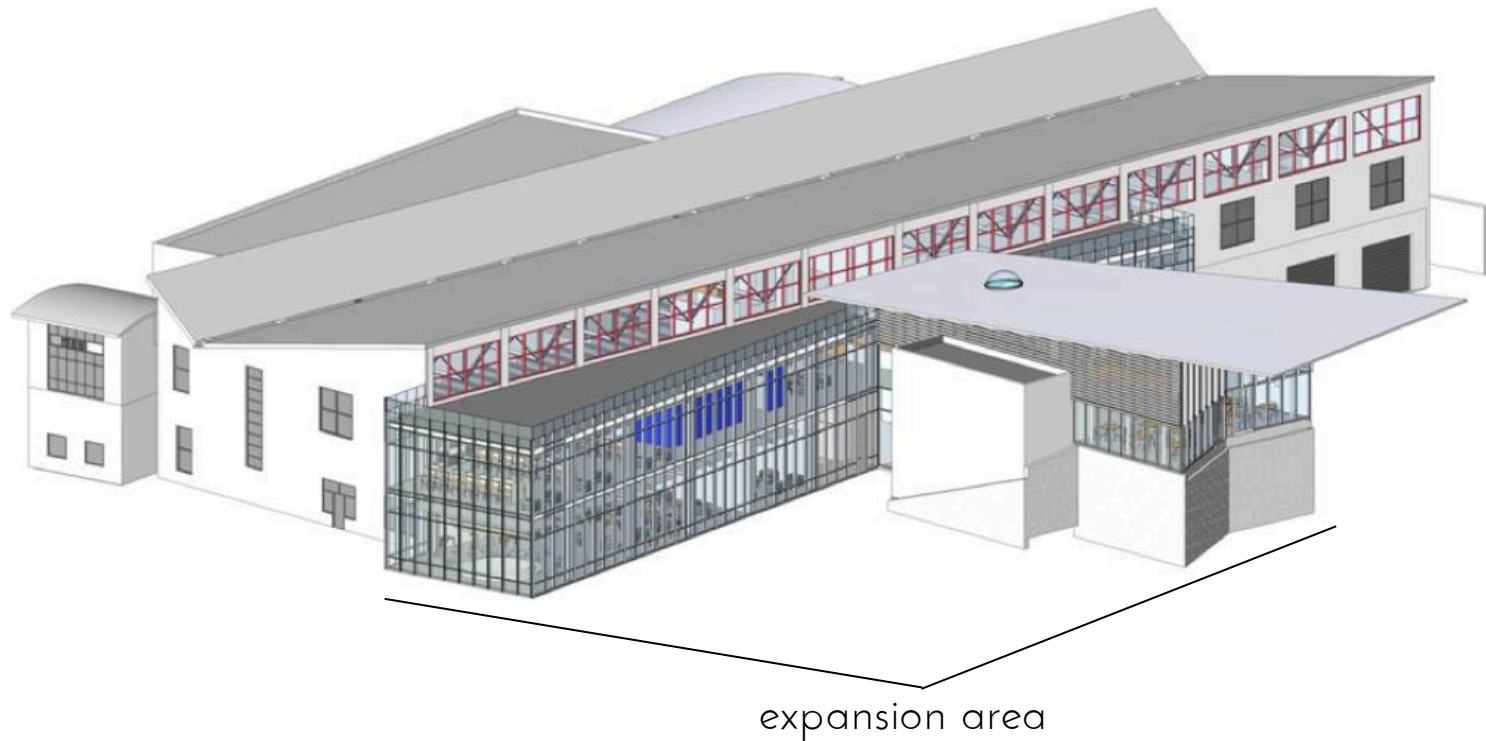
library expansion



The Civic Center & Park Project was designed by the internationally recognized firm of Bohlin Cywinski Jackson. Peter Walker & Associates designed the landscape; one of their recent projects was the 9/11 Memorial in New York City. The Civic Center & Park Project includes a city hall building, one of the city's largest parks, a 450-space parking structure, and an expansion of the Newport Beach Central Library. It is located on two parcels inland of the Newport Beach Central Library and bordered by Avocado Avenue and MacArthur Boulevard.



library expansion continued



The Newport Beach Central Library expansion includes an additional 17,000 square feet of library space and links the Library and Civic Center. The expansion improved the children's library; greatly expanded reading/study areas; added a state-of-the-art sound and video room; a cafe; and upstairs restrooms.



witte lecture series

Powerful, engaging, enlivening, entertaining, inspiring, provocative – the Martin W. Witte Distinguished Speakers Series presented by the Newport Beach Public Library Foundation has earned a stellar reputation for its high caliber of speakers on a wide variety of subjects. Since the beginning of this nationally recognized program in 1996 at the Newport Beach Public Library, this series has embraced a global perspective and has brought some of the most compelling voices of our time to the stage. Our speakers have earned the highest marks given in their chosen fields: The Pulitzer Prize, Oscar, Emmy, Tony, PEN/Faulkner, MacArthur Genius Grants, Guggenheim Fellowships, and the highest journalistic honors in every field.

From the economy to string theory, from the environment to the food industry, from foreign policy to the Middle East, and the White House to China, the Witte Lecture Series has provided access to highly-regarded speakers on these subjects and many others. It is our privilege to present this program in the beautiful Newport Beach Public Library where every guest has an opportunity to meet the speakers, ask questions and share good company with like-minded, curious people.

Some of the big name speakers we've had over the last 16 years have included: Tom Brokaw, George Plimpton, Robert Gates, Jared Diamond, Dominick Dunne, Frances Mayes, Ruth Reichl, Andy Rooney, and Michael Pollan, just to name a few.



allocation of funds

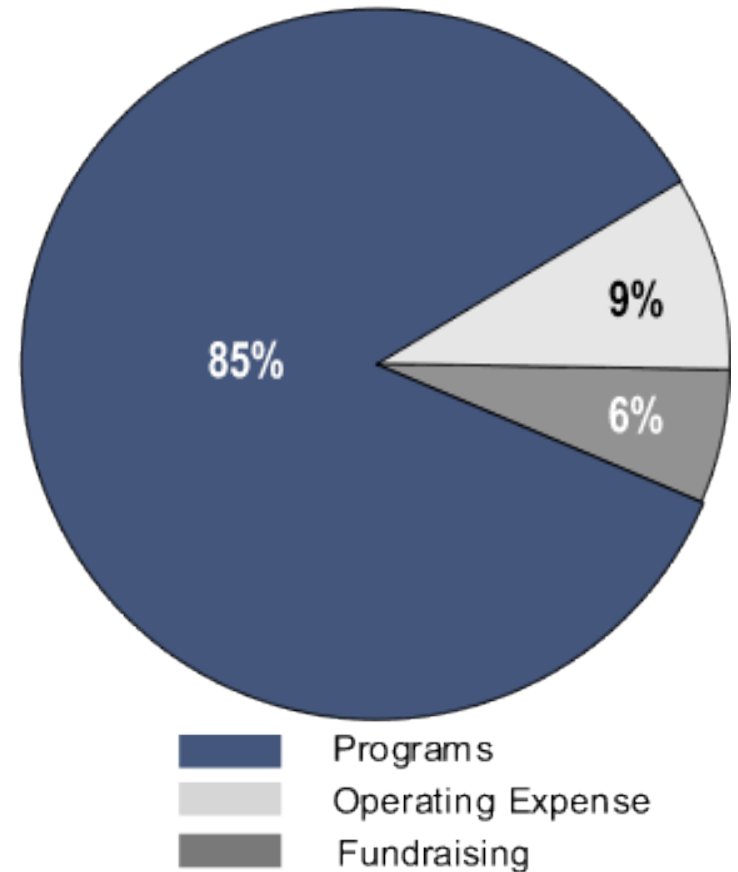
Every contribution given to the Foundation is carefully managed in order to provide the greatest benefit to those using the Library and participating in its programs. The Foundation supports the Library both through its Annual Fund and Endowment Fund.

Annual Fund

The Annual Fund is a critical part of the organization. The chart at the right shows how contributions to the Annual Fund are utilized. Over three quarters of every dollar directly supports programs and greatest needs at the Library; the remainder supports operations and encourages new revenue sources.

Endowment Fund

A source of ongoing support, the Endowment Fund is held in perpetuity and managed by Canterbury Consulting, Inc. of Newport Beach, CA. The experienced management group is dedicated to helping the Foundation meet its investment objectives and provide long-term protection for the Library system. Each year, five percent is given to the Library, if the funding is earning as much, for its greatest needs and programs.





library history

The history of the Newport Beach Public Library dates back to 1920 when the first public library was established in Balboa with a collection of 1,100 books. The original Corona del Mar Branch opened in 1947 and was replaced by the current Branch in 1959. Mariners Branch followed in 1963, and the Newport Center Branch opened in 1980.

In 1989, largely due to the determination and will of individuals and small community groups, a vision of great magnitude began to form. It was under the remarkable leadership of Elizabeth and John Stahr, along with the dedicated support of the Board of Library Trustees, that fundraising and awareness-raising began and the City Council authorized the building of a new Central Library.

On July 10, 1994, the Central Library opened, an \$8.2 million state-of-the-art facility designed by the team of Simon Martin-Vegue Winkelstein Moris, San Francisco, in association with James L. Piridy, Newport Beach. Each year more than 1.2 million people walk through the impressive entryway as well as the branches, and circulation of our materials system-wide is 1.5 million annually.

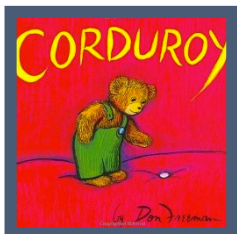
The Central Library brings more than books to the community. True to its mission, it has become the cultural, educational, and informational heart of Newport Beach.



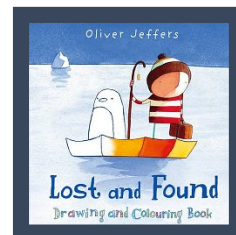
children's services

Our children's section has vastly improved as a part of the library expansion. Current children's services include:

- **Events:** Lego Block Party, Drop-in Crafts, Scavenger Hunts, Painting
- **Computers:** for educational games and homework help
- **Storytimes:** Books & Babies, Toddler Storytime, Preschool Storytime, Pajama Storytime, Family Storytime
- **Good books:** book list recommendations by age/grade
- **Databases for kids:** Biography Resource Center, Culturegrams
Live Homework Help, TumbleBooks, World Book Kids and more
- **Educational games:** including art, math, phonics, reading and more



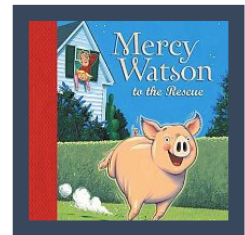
TODDLER
STORYTIME



TIKI TIKI
TEMBO

PAJAMA
STORYTIME

BOOKS &
BABIES





NEWPORT BEACH PUBLIC LIBRARY FOUNDATION

our website



nbplfoundation.org




bibliophile blog



FRIDAY, JANUARY 6, 2012

the world's most expensive book



bibliophile (ˈbɪ-bli-ə-ˈfi(-ə)l):
a book lover, a collector of books, and
the name of the Newport Beach Public
Library Foundation's new blog. Please
visit us weekly to find out what's
happening at the Library, which
celebrated authors are coming and
what new and noteworthy books
they've written. Thanks for stopping by
and we look forward to seeing you
at the Library!



The Foundation's blog (nbplfoundation.org) is a weekly dose of interesting things happening in the world of books.



and kids' blog



FRIDAY, JUNE 15, 2012

enormous + heavy



Newport Beach Public Library
FOUNDATION

kid news is just that -- anything and everything news-y for kids. Stay tuned for weekly posts on topics from chameleons to cartoons, blue moons to books. We look forward to seeing you back here soon!

Anything and everything newsy for kids. Weekly posts on topics from chameleons to cartoons, blue moons to books.



our board

The Newport Beach Public Library Foundation is under the guidance and leadership of some of the most talented and dedicated volunteers in the community.

Our Board of Directors includes:

Gordon McAlpine, President

Lee Boylan

Margie Buckingham

Karen Clark

Constance Glenn

Dorothy Larson

Toby Larson

Margi Murray

Carol Murrel

Natasha Palmaer

Dr. Adrian Windsor

Lizanne Witte

Felix Yan

Tracy Keys - Executive Director



NEWPORT BEACH PUBLIC LIBRARY FOUNDATION

contact

Tracy Keys
Executive Director
949 717 3890
tkeys@newportbeachca.gov

Newport Beach Public Library Foundation
1000 Avocado Avenue
Newport Beach, California 92660

