



CITY OF NEWPORT BEACH LOWER CASTAWAYS AD-HOC COMMITTEE AGENDA

Civic Center, 100 Civic Center Drive
Mtg Room-Crystal Cove (Bay 2D)
Monday March 3, 2014, 4PM

Harbor Commission Members:

Brad Avery David Girling Karen Rhyne

Parks, Beaches, & Recreation Commission Members:

Marie Marston

Staff Members:

Fong Tse Laura Detweiler
Chris Miller Sean Levin Shannon Levin

1) **CALL MEETING TO ORDER** – Welcome and Introductions

2) **ROLL CALL**

3) **PUBLIC COMMENTS**

Public comments are invited on agenda and non-agenda items generally considered to be within the subject matter jurisdiction of the Committee. Speakers must limit comments to three (3) minutes. Before speaking, we invite, but do not require, you to state your name for the record. The Committee has the discretion to extend or shorten the speakers' time limit on agenda or non-agenda items, provided the time limit adjustment is applied equally to all speakers. As a courtesy, please turn cell phones off or set them in the silent mode.

4) **CURRENT BUSINESS**

- a. Approve November 2013 Minutes
- b. Overview of Designs
- c. Next Steps
- d. Commission Agendas, Public Outreach & City Council Study Session

5) **ROUNDTABLE OR ADDITIONAL PUBLIC COMMENTS**

6) **DATE AND TIME FOR NEXT MEETING:**

To Be Determined

Meetings of the Lower Castaways Ad Hoc Committee are open to the public. The public may comment on agenda items before the Committee and items not on the agenda but are within the subject matter jurisdiction of the Committee. The Committee may limit public comments to a reasonable amount of time, generally three (3) minutes per person. It is the intention of the City of Newport Beach to comply with the Americans with Disabilities Act ("ADA") in all respects. If, as an attendee or a participant at this meeting, you will need special assistance beyond what is normally provided, the City of Newport Beach will attempt to accommodate you in every reasonable manner. If requested, this agenda will be made available in appropriate alternative formats to persons with a disability, as required by Section 202 of the Americans with Disabilities Act of 1990 (42 U.S.C. Sec. 12132), and the federal rules and regulations adopted in implementation thereof. Please contact the City Clerk's Office at least forty-eight (48) hours prior to the meeting to inform us of your particular needs and to determine if accommodation is feasible at (949) 644-3005 or cityclerk@newportbeachca.gov.

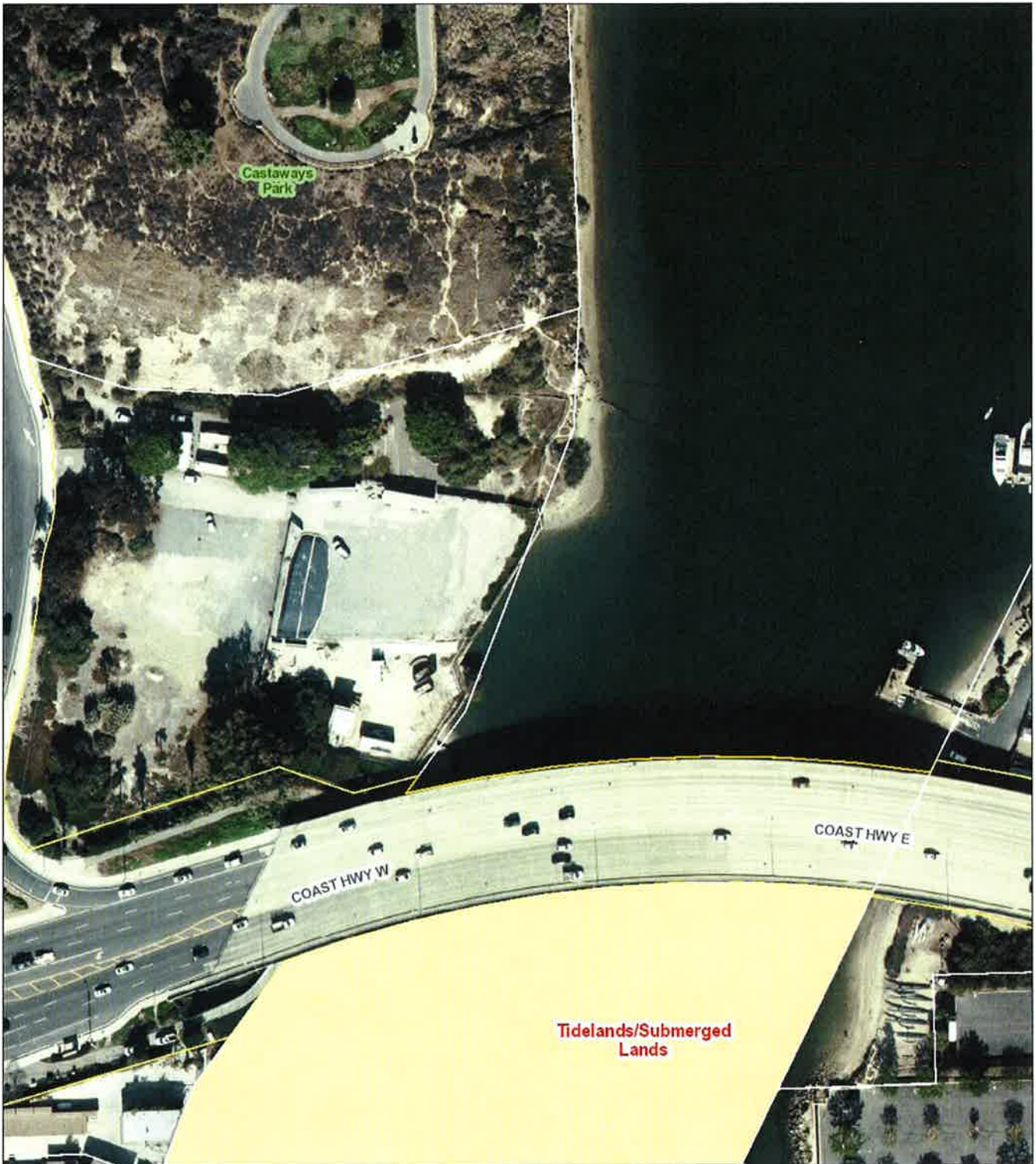
Lower Castaways Ad Hoc Committee

Committee Action Minutes – DRAFT UNTIL APPROVED

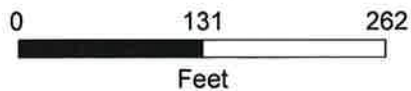
Meeting Date: Tuesday November 5, 2013, 2:30PM.

1. The meeting was called to order at 2:30 p.m. by Commissioner Dave Girling.
 2. Roll Call.
Commissioners Rhyne, Marston, and Avery absent.
 3. Public Comments on Non-Agenda Items.
Nancy Gardner mentioned the Council's recent action to maintain accessibility to paddle boarders by providing parking and signage at Lower Castaways.
 4. Current Business
 - a. Approve September Minutes. September minutes were not included in the agenda packet and will be placed on the agenda for approval at the next meeting.
 - b. Overview of designs.
Don Webb mentioned that the Lower Castaways location is the original landing area of Newport Beach and as such the City was named. He added that over time there were some small developments and housing on the hillsides of the two Castaways locations.
David Volz presented two conceptual designs for Lower Castaways. These designs are attached to the November minutes. Concept B includes a launch ramp that takes up a significant portion of the parcel. Comments included staffing for a launch ramp, designated wash down areas, and a floating dock for vessel staging. This Concept B allows for roughly 40 parking spaces.
Concept A is described as a recreational hub for cyclists, walkers, and a waterfront launch site for paddle boards and other small hand-launch craft. Most of the discussion focused on the details of this Concept. The idea of including a small coffee or ice cream shop at this location was mentioned again. It was noted that there is a monument marker across Dover Drive for the original landing of vessels and that the Lower Castaways may be the best place to relocate that monument tying in the historic uses. A staircase is proposed to connect the two Castaways parks continuing the Back Bay Loop to Coast Hwy. Concept A includes a cantilevered deck or floating deck concept to link the land and harbor elements. There was discussion regarding the Marine Protected Area.
 - c. Next Steps.
Staff will develop a list of environmental studies, regulatory processes, permitting requirements, and cost estimates prior to setting a meeting date. It is expected that the next meeting will be held in February or March.
 5. Next Meeting.
TBD
 6. Adjournment.
-

The agenda for November 6, 2013 meeting was posted on October 31, 2013 at 5:08PM on the City Hall Electronic Bulletin Board located inside the City Council Chambers and on the City's website on October 31, 2013 at 5:02PM.



Newport
Beach
GIS



Disclaimer: Every reasonable effort has been made to assure the accuracy of the data provided, however, The City of Newport Beach and its employees and agents disclaim any and all responsibility from or relating to any results obtained in its use.

Imagery: 2009-2011 photos provided by Eagle Imaging www.eagleaerial.com

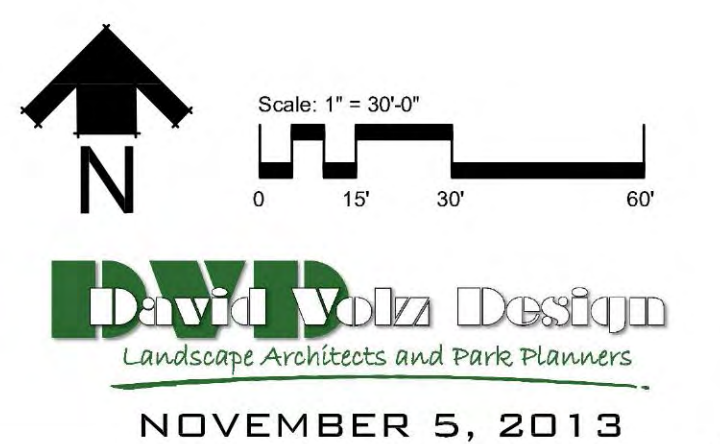


LEGEND

- | | | |
|--|--|---|
| A PARKING (80 TO 90 SPACES) | G FLEXIBLE SPACE TO ACCOMMODATE COMMUNITY EVENTS (I.E. FARMERS MARKET, FOOD TRUCKS) | N BOAT DOCK TO ACCOMMODATE SMALL BOATS |
| B ELECTRIC VEHICLE CHARGING STATIONS | H "THE JETTY" LANDSCAPE FEATURE | O OUTDOOR AMPHITHEATER (90 SEATS) |
| C WATER QUALITY DESIGN FEATURE | I "GENTLE" SLOPING OPEN LAWN | P GRAND STAIRWAY & FITNESS STEPS |
| D TRAILHEAD FOR BICYCLISTS (INCLUDE BIKE WORK STATIONS, DRINKING FOUNTAIN, PICNIC TABLES AND BENCHES) | J "TIDAL TOWER" FEATURE | Q VIEWING DECK |
| E RESTROOM & STORAGE BUILDING | K BOARDWALK | R HILLSIDE - RESTORE VEGETATION |
| F PROTECT EXISTING TREES AND RESTORE UNDERSTORY LANDSCAPE | L CANTILEVERED DECK w/ UMBRELLA & CAFE TABLES | S SHADE CANOPY |
| | M LOWER CASTAWAYS PIER | |

CONCEPT A

LOWER CASTAWAYS PARK
CITY OF NEWPORT BEACH





LEGEND

- | | |
|--|--|
| A PARKING (40 STANDARD SPACES) | G MONUMENT COLUMNS |
| B TRUCK & TRAILER PARKING (10 SPACES) | H BOCCE BALL COURT (2) |
| C LAUNCH RAMP (TWO LANES) | I CANTILEVERED DECK w/ UMBRELLA & CAFE TABLES |
| D TRAILHEAD FOR BICYCLISTS
(INCLUDE BIKE WORK STATIONS, DRINKING FOUNTAIN,
PICNIC TABLES AND BENCHES) | J BOAT DOCK TO ACCOMMODATE SMALL BOATS |
| E RESTROOM & STORAGE BUILDING | K OUTDOOR AMPHITHEATER (90 SEATS) |
| F PROTECT EXISTING TREES AND RESTORE UNDERSTORY
LANDSCAPE | |

CONCEPT B

LOWER CASTAWAYS PARK
CITY OF NEWPORT BEACH

