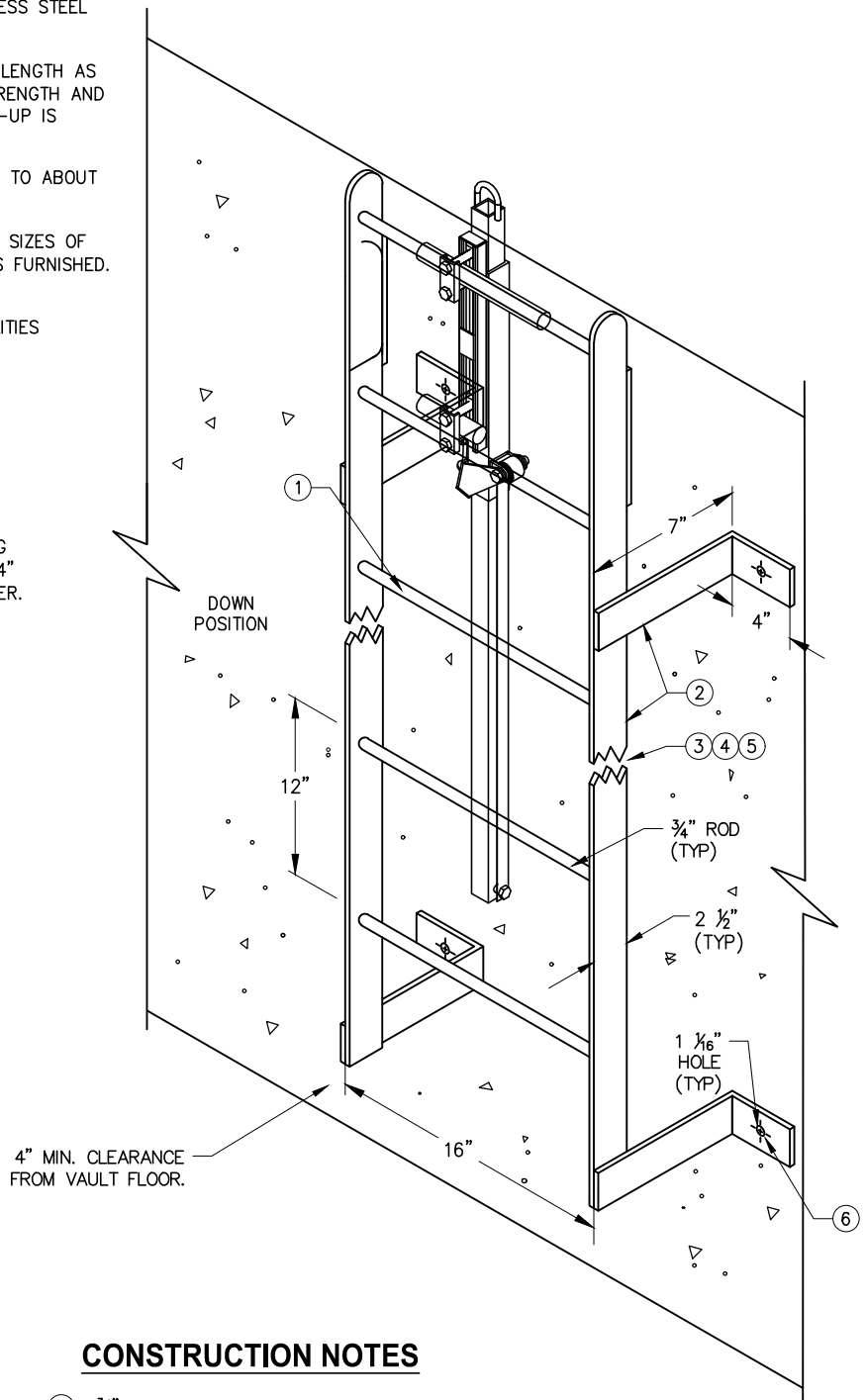
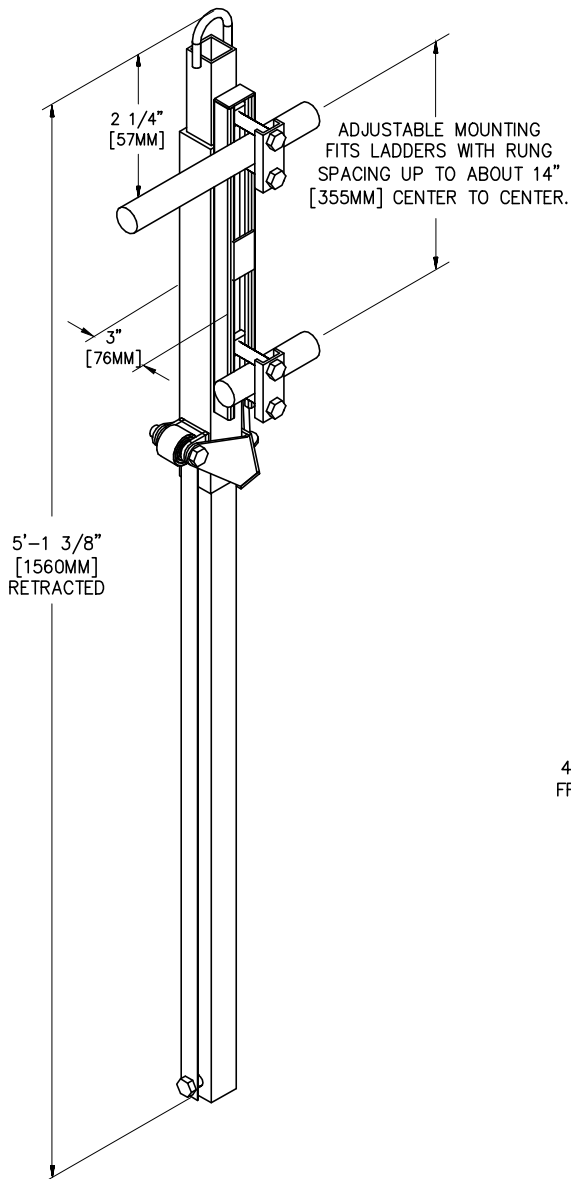


GENERAL NOTES

1. THE BILCO LADDER-UP SAFETY POST IS FURNISHED COMPLETELY ASSEMBLED READY TO MOUNT ON REAR OF LADDER WITH CLAMP BRACKETS ON CLIMBING SIDE. LADDER MUST BE STRUCTURALLY SOUND AND SECURELY ANCHORED. BILCO PRODUCT # LU-1 W/STAINLESS STEEL MOUNTING BOLTS AND POWDER COATING.
2. ON HOLLOW RUNG LADDERS INSERT SOLID ROUND BAR (SAME LENGTH AS RUNG) INTO THE TOP TWO RUNGS TO PROVIDE ADDITIONAL STRENGTH AND PREVENT CRUSHING OF THE LADDER RUNG WHEN THE LADDER-UP IS FASTENED.
3. ADJUSTABLE MOUNTING FITS LADDERS WITH RUNG SPACING UP TO ABOUT 14" (355MM) CENTER TO CENTER.
4. CLAMP BRACKETS MAY BE REVERSED TO ACCOMMODATE RUNG SIZES OF 3/4" (19MM) TO 1 1/4" (32MM) WITH STANDARD 2" (51MM) BOLTS FURNISHED. LARGER RUNGS WILL REQUIRE LONGER BOLTS.
5. FOR VAULTS LESS THAN 5' IN DEPTH, CONTACT THE CNB UTILITIES DEPARTMENT FOR ALTERNATE OPTIONS.



CONSTRUCTION NOTES

- ① 3/4" DIAMETER ROD PIN WELDED TO LADDER SIDE RAIL.
- ② ALL RAILS AND BRACKETS SHALL BE FABRICATED FROM 1/4" STEEL FLAT BAR STOCK.
- ③ ALL JOINTS SHALL BE WELDED PER AMERICAN WELDING SOCIETY STANDARDS.
- ④ ALL SURFACE WELDS SHALL BE GROUND SMOOTH AND CLEANED AFTER FABRICATION.
- ⑤ HOT-DIP GALVANIZE AFTER FABRICATION.
- ⑥ ALL CONNECTING AND MOUNTING HARDWARE SHALL BE TYPE 316 STAINLESS STEEL.

FORMER CITY STANDARD PLAN NUMBER (2004 EDITION): STD 530-L

APP. <i>James M. Hinkle</i>	51568	11/24/2020			
CITY ENGINEER	RCE	DATE			
			NO.	DATE	DESCRIPTION OF REVISIONS

CITY OF NEWPORT BEACH DEPARTMENT OF PUBLIC WORKS

DRAWN: M. ELIAS	<h1>STANDARD VAULT LADDER</h1>	STANDARD DRAWING NO.
DATE: 11/3/2020		<h1>525</h1>
		SHEET 1 OF 1