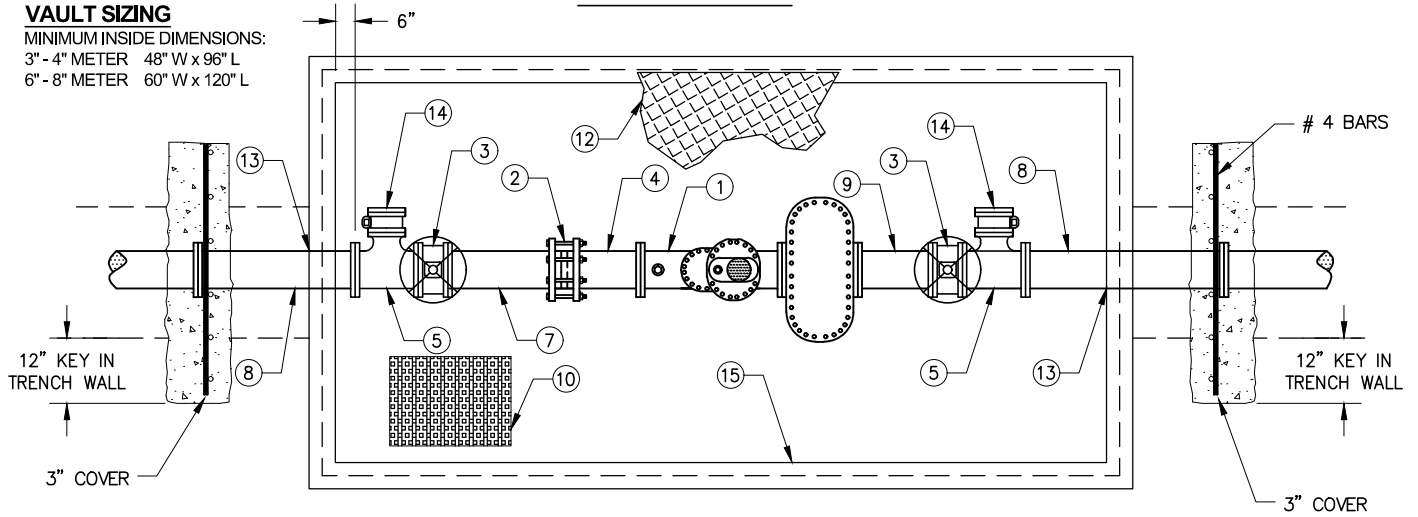


PROFILE VIEW: NOTE TO SCALE

VAULT SIZING
 MINIMUM INSIDE DIMENSIONS:
 3" - 4" METER 48" W x 96" L
 6" - 8" METER 60" W x 120" L



PLAN VIEW: NOTE TO SCALE

CONSTRUCTION NOTES

- ① COMPACT DUAL REGISTER HIGH PERFORMANCE COMPOUND METER WITH SOLID BRONZE IN-LINE STRAINER, COMPACT SINGLE REGISTER TURBINE METER WITH SOLID BRONZE IN-LINE STRAINER OR COMPACT FM METER ASSEMBLY W/INTEGRAL DETECTOR CHECK VALVES, MAINLINE AND BY-PASS TURBINE METER AND IN-LINE STRAINER. CONTACT CNB UTILITIES DEPARTMENT FOR SPECS AND APPROVED METERS.
- ② DUCTILE IRON FLEX COUPLING. FORD, ROMAC, DRESSER OR APPROVED EQUIVALENT.
- ③ RESILIENT WEDGE GATE VALVE WITH HAND WHEEL OPERATOR & FLANGED ENDS.
- ④ CLASS 52, MORTAR LINED, D.I.P. SPINDLE PIECE (FOE.) 12" LONG. FABRICATE WITH HARNESS LUGS.
- ⑤ FE, COMPACT (SHORT BODY PATTERN), MORTAR LINED DUCTILE IRON TEE. BRANCH DIA. TO BE 2" LESS THAN RUN DIA. I.E., 8" x 6" TEE. WHEN BRANCH LINE IS LESS THAN 4", REPLACE TEE WITH 2" CORP STOP AND SADDLE.
- ⑥ 6" THICK CONCRETE SLAB OR PRECAST CONCRETE VAULT FLOOR OF EQUAL SPECIFICATION. REINFORCED WITH W1.4 x W1.4 WELD WIRE MESH. CONCRETE SHALL BE 560-C-3250 MIX. VAULT MANUFACTURER SHALL BE AS APPROVED BY CNB UTILITIES DEPARTMENT CALL 644-3011.
- ⑦ CLASS 52, MORTAR LINED, D.I.P. SPINDLE PIECE (FOE.) 18" LONG. FABRICATE INTEGRALLY WITH HARNESS ASSEMBLY LUGS.
- ⑧ CLASS 52, MORTAR LINED, D.I.P. SPOOL PIECE (FBE). 48" LONG.
- ⑨ CLASS 52, MORTAR LINED, D.I.P. SPOOL PIECE (FBE). 6" OR 12" LONG.
- ⑩ RECESSED CAST IRON SUMP GRATE. ALHAMBRA FOUNDRY OR EQUIVALENT.

- ⑪ ADJUSTABLE PIPE SUPPORT PER STD 521.
- ⑫ J&R U.S.F. DIAMOND PLATE ALUMINUM COVER. SPRING ASSISTED, TWO PIECE COVER WITH LOCKING, HINGED, ROUND METER READING LIDS CENTERED OVER EACH METER. SPECIAL DESIGN REQUIRED FOR TRAFFIC LOADING APPLICATIONS.
- ⑬ "LINK-SEAL" MECHANICAL PIPING SEAL IN ANNULAR SPACE BETWEEN PIPE O.D. & CAST-IN-PLACE WATER STOP RING IN VAULT OPENING OR HYDRAULIC CEMENT WITH PRIOR CITY APPROVAL.
- ⑭ 4" DIAMETER RESILIENT WEDGE GATE VALVE WITH BURIED SERVICE SQUARE OPERATOR NUT AND FLANGED ENDS WITH ANSI RATED 125# BLIND FLANGE INSTALLED.
- ⑮ VAULT LADDER PER STD 525. EXACT LOCATION TO BE DETERMINED BY CITY.

GENERAL NOTES

- 1. ALL ABOVE GRADE PIPING SHALL BE PAINTED WITH AN ALKYD ENAMEL PAINT SYSTEM CONSISTING OF A 2 MIL PRIMER COAT AND TWO (2) COATS OF 2 MILS (EACH) HIGH GLOSS ENAMEL. COLOR SHALL BE WHITE OR BLUE, AS REQUIRED BY THE CITY.
- 2. ALL BELOW GRADE DUCTILE IRON PIPE AND FITTINGS SHALL BE ENCASED IN ACCORDANCE WITH AWWA STANDARDS IN AN 8 MIL POLYETHYLENE WRAP.
- 3. ALL FLANGE JOINTS SHALL BE CONNECTED WITH TYPE 316 STAINLESS STEEL FASTENERS. MECHANICAL JOINT SHALL BE JOINED WITH EITHER MALLEABLE IRON OR SELF-WEATHERING CORTEN STEEL.
- 4. ALL VAULTS REQUIRE THE INSTALLATION OF ONE VENT AT THE LOW POINT AND ONE AT THE HIGH POINT. VAULT VENTS SHALL BE INSTALLED PER STD 528-A OR STD 528-B. SIZING OF VENTS SHALL BE DETERMINED BY THE PROJECT'S ENGINEER.
- 5. ALL WATER METER VAULTS SHALL HAVE METER READING LID WITH 6" x 6" MIN OPENING DIRECTLY OVER METER.

FORMER CITY STANDARD PLAN NUMBER (2004 EDITION): STD 524-L

APP. <i>James M. Hinkle</i>	51568	11/24/2020		
CITY ENGINEER	RCE	DATE	NO.	DATE
				DESCRIPTION OF REVISIONS

CITY OF NEWPORT BEACH DEPARTMENT OF PUBLIC WORKS

DRAWN: M. ELIAS	WATER METER ASSEMBLY	STANDARD DRAWING NO.
DATE: 11/3/2020		507
		SHEET 1 OF 1