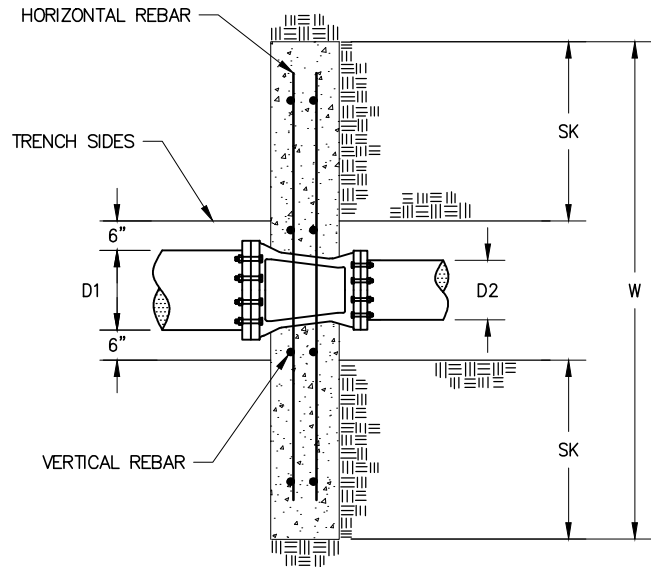


PROFILE VIEW (NOT TO SCALE)



PLAN VIEW (NOT TO SCALE)

GENERAL NOTES

1. THRUST BLOCK CONCRETE SHALL BE 560-C-3250.
2. REINFORCING STEEL SHALL BE GRADE 60 #4 CONFORMING TO ASTM 615, UNLESS OTHERWISE DESIGNED BY A CALIFORNIA REGISTERED PROFESSIONAL ENGINEER. ALL REBARS EXPOSED TO SOIL SHALL BE EPOXY COATED.
3. THRUST BLOCKS SHALL BE KEYED INTO UNDISTURBED SOIL USING THE DIMENSIONS FOR BOTTOM KEY (BK.) AND SIDE KEY (SK.) SPECIFIED IN THE TABLE BELOW.
4. DESIGN VALUES FOR THRUST IN POUNDS ARE FOR A 250 PSI TEST PRESSURE. IN INSTANCES WHERE A TEST PRESSURE HIGHER THAN 250 PSI IS REQUIRED, VALUES GIVEN IN THIS STANDARD DRAWING ARE NOT VALID AND SPECIAL CALCULATIONS SHALL BE PERFORMED.
5. DESIGN VALUES FOR THRUST BLOCK DIMENSIONS ARE CALCULATED ASSUMING A COHESIONLESS SOIL (C=0) WITH AN INTERNAL ANGLE OF FRICTION OF 37° AND A UNIT WEIGHT OF 110 PCF. WHEN THE SOIL CONDITIONS UNDER CONSIDERATION INDICATE WEAKER PROPERTIES, VALUES IN THIS STANDARD DO NOT APPLY AND SPECIAL CALCULATIONS SHALL BE PERFORMED.
6. THRUST BLOCK CONCRETE SHALL NOT BE POURED ON PIPE ON EITHER SIDE OF THE REDUCER OR ON ANY FITTING BOLTS.
7. MINIMUM CONCRETE COVER FOR REBARS SHALL BE 3".
8. ALL DUCTILE IRON FITTINGS SHALL BE ENCASED IN POLYETHYLENE WRAP PER AWWA STANDARD C105.

THRUST BLOCK BEARING AREA L x H IN SQUARE FEET

REDUCER SIZE D1 x D2 (IN.)	THRUST (LBS.)	WIDTH W (IN.)	HEIGHT H (IN.)	BOTTOM KEY BK (IN.)	SIDE KEY SK (IN.)	THICKNESS TH (IN.)
30 x 24	57526	150	98	54	54	30
24 x 18	44532	132	95	48	48	24
18 x 16	12017	78	54	24	24	19
16 x 12	19792	100	54	36	36	18
12 x 10	7775	60	46	24	18	14
12 x 8	14137	84	51	30	30	14
12 x 6	19085	96	57	36	36	14
12 x 4	22619	96	69	42	36	14
10 x 8	6362	58	43	18	18	12
8 x 6	4948	56	29	18	18	11
8 x 4	8482	68	40	24	24	11
6 x 4	3534	42	31	18	12	9

FORMER CITY STANDARD PLAN NUMBER (2004 EDITION): STD 510-L-B

APP. *James M. Hinkle* 51568
 CITY ENGINEER RCE 11/24/2020
 DATE

NO.	DATE	DESCRIPTION OF REVISIONS

CITY OF NEWPORT BEACH DEPARTMENT OF PUBLIC WORKS

DRAWN: M. ELIAS
 DATE: 11/3/2020

REDUCER THRUST BLOCK

STANDARD DRAWING NO.
516-B
 SHEET 1 OF 1