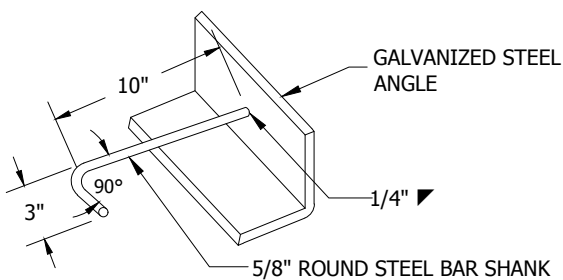
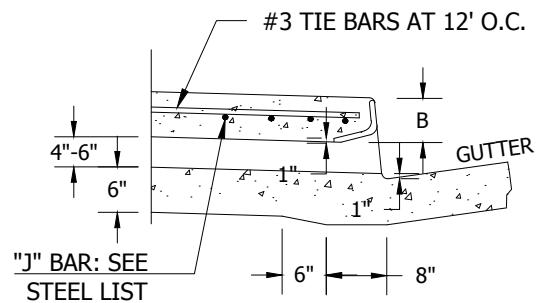


S	B	GALVANIZED STEEL ANGLE	ANCHORS REQUIRED	J-BAR		
				SIZE	SPACING	LENGTH
1'-0"	3"	2 1/2" X 2" X 3/8"	2	#3	7"	1'-9"
1'-6"	3"	2 1/2" X 2" X 3/8"	2	#3	7"	2'-3"
2'-0"	3"	2 1/2" X 2" X 3/8"	2	#3	7"	2'-9"
2'-6"	3"	2 1/2" X 2" X 3/8"	2	#3	7"	3'-3"
3'-0"	3"	2 1/2" X 2" X 3/8"	3	#3	7"	3'-9"
3'-6"	3"	2 1/2" X 2" X 3/8"	3	#3	6"	4'-3"
4'-0"	3"	2 1/2" X 2" X 3/8"	3	#3	5"	4'-9"
4'-6"	4"	3 1/2" X 3" X 1/2"	3	#3	6 1/2"	5'-3"
5'-0"	4"	3 1/2" X 3" X 1/2"	3	#3	5"	5'-9"
5'-6"	4"	3 1/2" X 3" X 1/2"	3	#3	4"	6'-3"
6'-0"	4"	3 1/2" X 3" X 1/2"	3	#3	3 1/2"	6'-9"



DETAIL OF ANCHOR
(SEE NOTES 8 & 10)




OUTLET DETAIL

NOTES:

1. FLOOR OF BOX TO BE TROWELED SMOOTH.
2. WHEN THE TOE OF THE SLOPE IS WITHIN THE R/W, INLET TYPE I BEGINS AT THE TOE RATHER THAN AT THE R/W LINE.
3. FOR OPEN DITCH APPROACH (TYPE II) THE EXTENSION IS NOT REQUIRED WHEN THE BACK OF WALK IS 2' OR MORE FROM THE R/W LINE.
4. TOP OF THE INLET STRUCTURE (TYPE I & II) TO BE FLUSH WITH THE ADJACENT SURFACE WHERE PRACTICABLE.
5. A HEADED STEEL STUD 5/8" X 6 3/8" WITH HEAD D=1" ATTACHED BY A FULL PENETRATION BUTT WELD MAY BE USED AS AN ALTERNATE ANCHOR.
6. NORMAL CURB FACE AT POINT M AND Q, B+5" AT POINT N AND P.
7. THE 3' LEG OF INTERIOR ANCHORS AND 10" SHANK OF ALL ANCHORS SHALL BE PARALLEL TO THE TOP OF SIDEWALK.
8. SPAN "S" AND HEIGHT OF OPENING AND CURB FACE AT CULVERT SHALL BE NOTED ON PLANS.
9. NORMAL CURB FACE AT POINT M AND Q, B+5" AT POINT N AND P.
10. HEIGHT OF CURB OPENINGS FOR TYPES A & B PARKWAY CULVERTS WILL VARY WITH TYPES OF CURB.
11. REINFORCING STEEL SHALL BE 1" CLEAR TO INSIDE OF CULVERT UNLESS OTHERWISE SHOWN.

ADOPTED FROM APWA STANDARD PLAN 310-2
FORMER CITY STANDARD PLAN NUMBER (2004 EDITION): STD 320-L

APP. 	51568	11/24/2020			
CITY ENGINEER	RCE	DATE	NO.	DATE	DESCRIPTION OF REVISIONS

CITY OF NEWPORT BEACH DEPARTMENT OF PUBLIC WORKS

**PARKWAY CULVERT
STEEL LIST, DETAILS & NOTES**

STANDARD DRAWING NO.

310

SHEET 1 OF 1

DRAWN: M. ELIAS

DATE: 11/3/2020