

120-240 VAC LED, LUMINAIRE LEOTEK OR EQUAL WITH 7-PIN PHOTOELECTRIC CELL AND RECEPTACLE. COLOR TEMPERATURE, DISTRIBUTION, FINISH, DRIVE CURRENT, AND WATTAGE WILL BE DETERMINED BY THE CITY ON A CASE-BY-CASE BASIS.

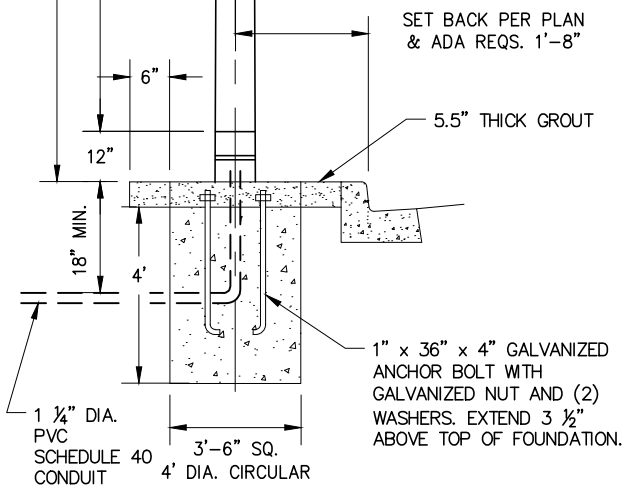
AMERON CAT. NO.	BRACKET		MOUNTING HEIGHT	POLE HEIGHT	R	BOLT DISTANCE X	BOLT CIRCLE Y
	ARM	TILT					
1J223	6'	5°	29'-6"	23'-2"	36"	8 1/2"	12 1/2"
1J328	8'	5°	35'-0"	28'-1"	69"	10 3/4"	15 1/4"

AMERON CONCRETE POLE MIX 37 OR APPROVED EQUAL.

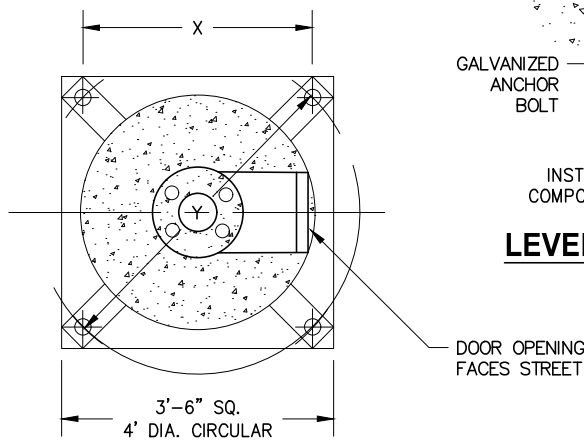
**GENERAL NOTES**

1. MOUNTING ARM SERIES J AND JS SHALL ONLY BE USED UNDER SPECIAL CIRCUMSTANCE WITH APPROVE BY MUNICIPAL OPERATION'S DEPARTMENT UTILITIES DIVISION.
2. BRACKET ARM, MOUNTING AND POLE HEIGHTS TILT ANGLE AND LAMP SIZE TO BE SHOWN ON PLANS.
3. 4' DIA. CIRCULAR FOUNDATION MAY BE USED IN PLACE OF 3'-6" SQ. FOUNDATION.
4. ALL BASES SHALL BE POURED TO 4.5" BELOW SIDEWALK GRADE, TO ALLOW FOR 4.5" THICK GROUT.
5. THE AREA AROUND ALL STANDARDS SHALL BE FORMED AND POURED WITH GROUT TO EXTEND 6" BEYOND EDGE OF FOUNDATION ON EACH SIDE AND BACK OF STANDARD AND FROM BACK OF CURB TO FRONT OF STANDARD. GROUT SHALL BE POURED FROM TOP OF BASE TO SIDEWALK GRADE. GROUT SHALL CONSIST OF 2 PARTS SAND AND 1 PART CEMENT.
6. EACH POLE SHALL HAVE A PULL BOX, SEE STD 204.
7. FUSE HOLDER SHALL BE LOCATED IN ADJACENT PULL BOX, SEE STD 205.
8. ALL THREADED CONNECTIONS SHALL HAVE PRE-APPROVED ANTI-SEIZE COMPOUND.
9. SEE POLE LEVELING DETAIL ABOVE.
10. FOR POLE WIRING, SEE STD 205.
11. POLE NUMBERING SHALL BE 1" BLACK VINYL SELF-ADHESIVE NUMBERS ON 1"x6" REFLECTIVE BACKING INSTALLED IN A VERTICAL ORIENTATION.
12. WIRING FROM ADJACENT PULL BOX TO LUMINAIRE SHALL BE #10 AWG INSULATED STRANDED COPPER (NON-GROUNDED CONDUCTORS) AND #12 AWG SOLID COPPER GROUND. MATCH COLOR CODE OF CIRCUIT.
13. POLE DOOR HAND HOLE FASTENERS TO BE TAMPER RESISTANT, STAINLESS STEEL.

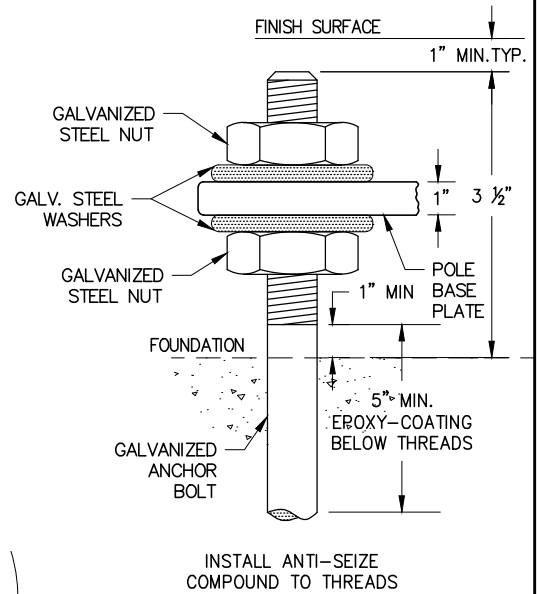
MOUNTING HEIGHT  
POLE HEIGHT



**ELEVATION**



**BASE DETAIL**



**LEVELING DETAIL**

FORMER CITY STANDARD PLAN NUMBER (2004 EDITION): STD 203-L

APP. *James M. Hinkle* 51568 11/24/2020  
CITY ENGINEER RCE DATE

NO.	DATE	DESCRIPTION OF REVISIONS

**CITY OF NEWPORT BEACH DEPARTMENT OF PUBLIC WORKS**

DRAWN: M. ELIAS

DATE: 11/3/2020

**LIGHT STANDARD TYPE 4**

STANDARD DRAWING NO.

**202**

SHEET 1 OF 1