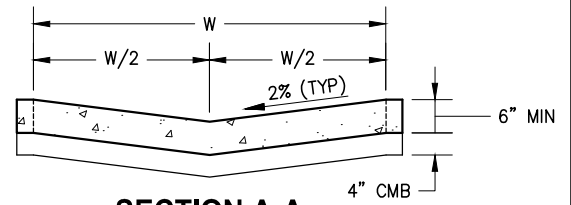
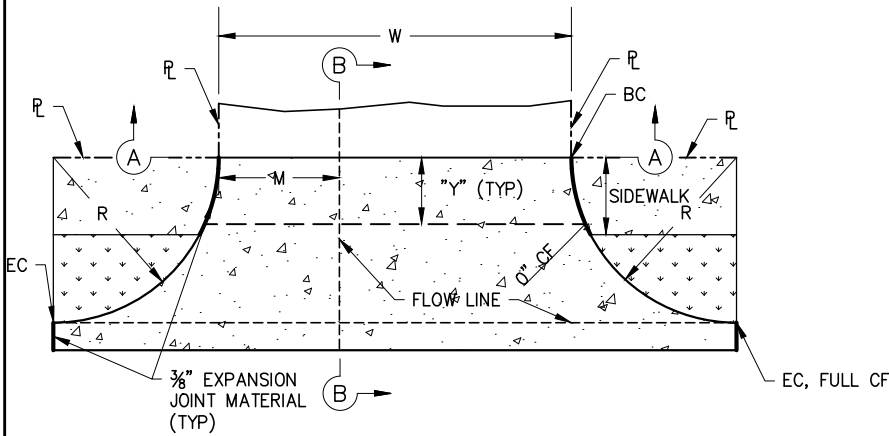


**PLAN
TYPE A**

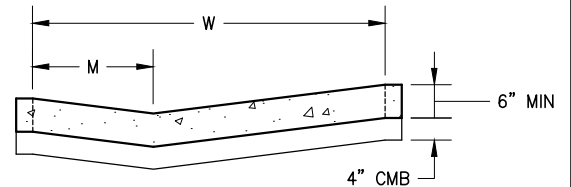


SECTION A-A

TYPES A & C

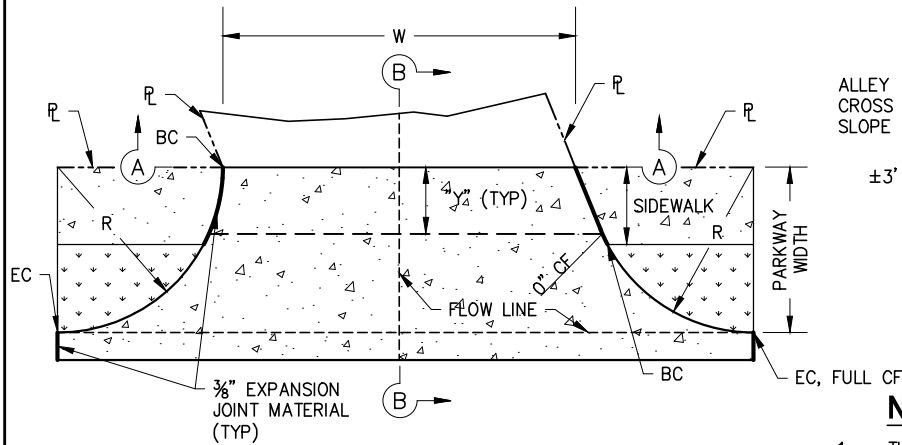


**PLAN
TYPE B**

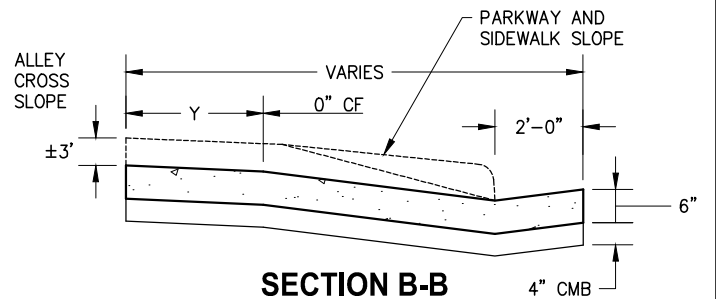


SECTION A-A

TYPE B



**PLAN
TYPE C**




SECTION B-B

TYPES A, B, & C

NOTES:

1. THE RADIUS OF THE CURB RETURN SHALL NOT BE GREATER THAN 10 FEET.
2. CONCRETE SURFACE 6" ON EACH SIDE OF A FLOW LINE SHALL HAVE A STEEL TROWEL FINISH EXCEPT BETWEEN THE PROPERTY LINE AND THE GUTTER.
3. "M" SHALL BE EQUAL TO W/5, BUT NOT LESS THAN 2 FEET.
4. "Y" SHALL BE A MINIMUM OF 4 FEET.
5. CONCRETE SHALL BE 560-C-3250 UNLESS OTHERWISE SPECIFIED.

FORMER CITY STANDARD PLAN NUMBER (2004 EDITION): STD 142-L

APP. 	51568	11/24/2020		
CITY ENGINEER	RCE	DATE	NO.	DATE
			DESCRIPTION OF REVISIONS	

CITY OF NEWPORT BEACH DEPARTMENT OF PUBLIC WORKS

DRAWN: P. KHARAZMI	ALLEY APPROACHES TYPES A, B, AND C	STANDARD DRAWING NO.
DATE: 11/3/2020		142
		SHEET 1 OF 1