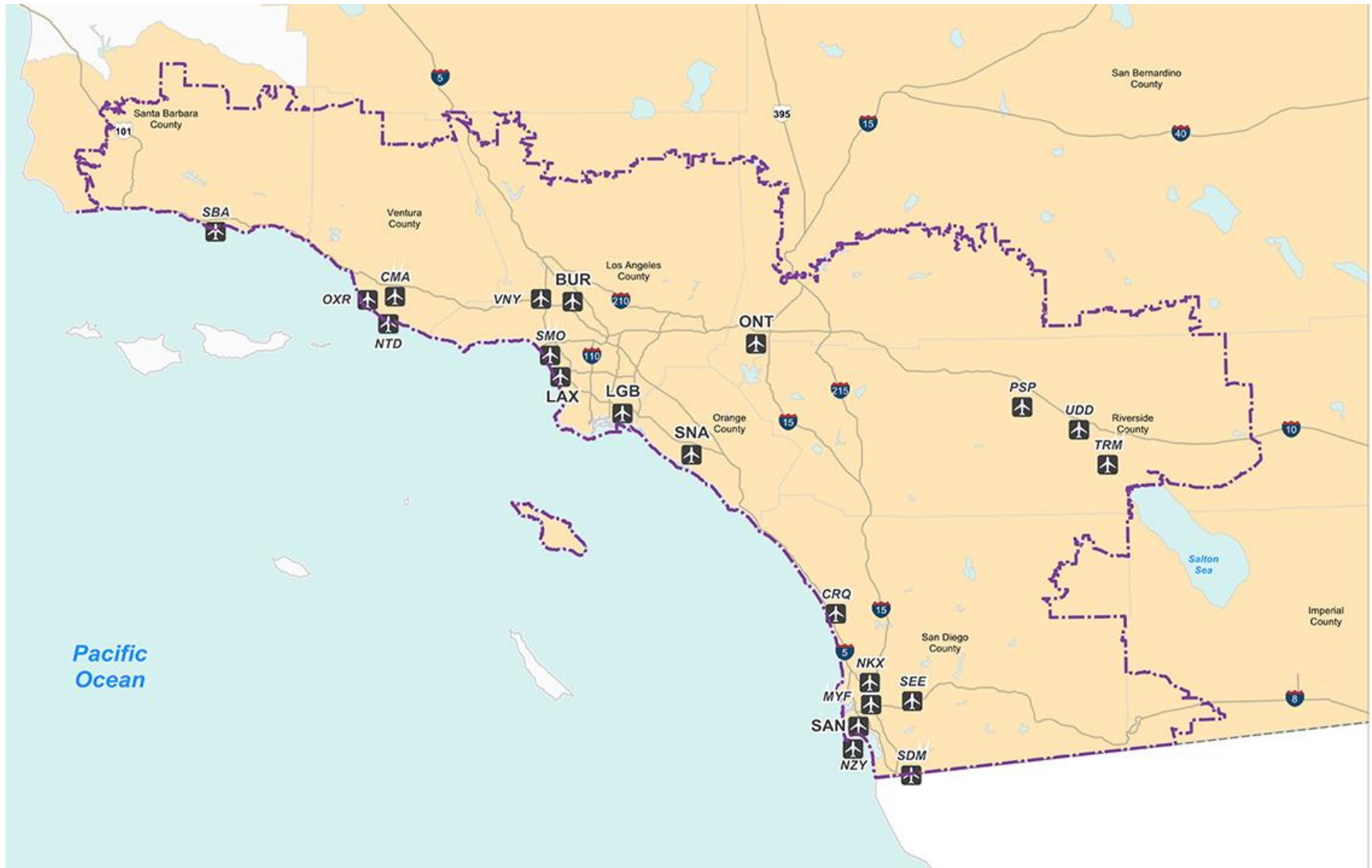


# EA FOR THE SO CAL METROPLEX

NB Aviation Committee, August 6<sup>th</sup>, 2015

# So Cal Metroplex EA Study Area



# What's this about?

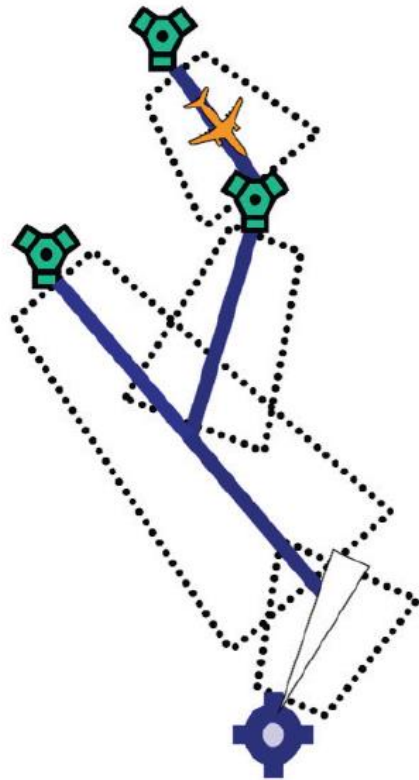
- “...Improve the efficiency of airspace .... at 21 airports.”
- “...may involve changes in ... flight paths and altitudes ... but would not result in ... ground disturbance or increase the # of (flights).”
- FAA's Goals:
  - ▣ Optimize flight paths and climb/descent
  - ▣ RNAV (more narrow, repeatable tracks) “everywhere” and
  - ▣ RNP (required navigation performance – most detailed) “where beneficial”

# Terms to Know

- ADS-B (automatic dependent surveillance - broadcast, a replacement for secondary radar).
- EA (Environmental Assessment following the rules of NEPA [the National Environmental Protection Act – state equivalent is CEQA])
- NextGen (next generation of flight technology)
- OAPM (optimization of airspace and performance in the metroplex)
- RNAV (area navigation)
- RNP (required navigational performance)
- SID (Standard Instrument Departure)
- STREL (both a point offshore and a departure path leading to that point)
- TOING (a point now near the Newport Dunes and NMS 7)

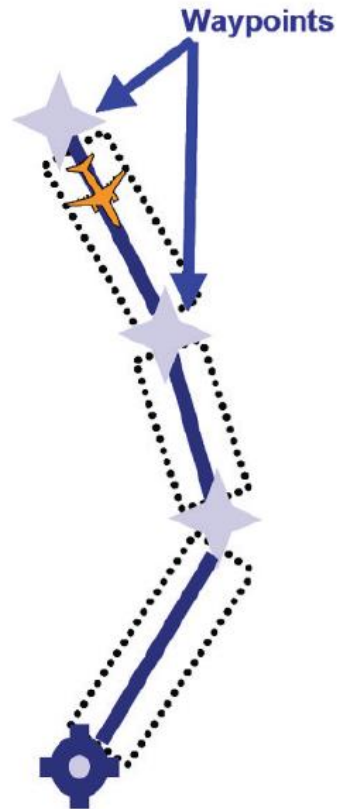
# RNAV and RNP

## Current Ground NAVAIDs



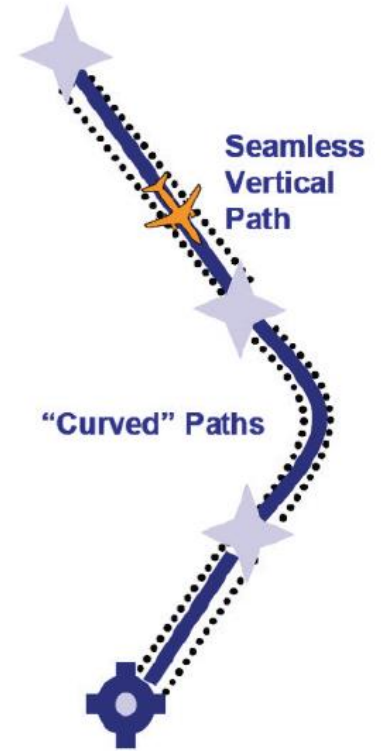
Limited Design  
Flexibility

## RNAV



Increased Airspace  
Efficiency

## RNP



Highly Optimized  
Use of Airspace

# Questions We've Heard

- Are flight paths being moved over my home?
  - ▣ FAA's goal = no new areas affected.
- What if I live under the proposed narrowing of the flight paths?
  - ▣ More of the flights will go over your home.
- Can we stop this?
  - ▣ Very challenging – NextGen is a nationwide effort for:
    - Safety
    - Efficiency
    - Repeatability
    - Maximization of congested airspaces

# Please know...

- Our ability to provide meaningful input is limited.
  - This is a Congressionally-driven process w/FAA
- The EA itself is not the most clear or helpful document.
- City will offer comments – primarily technical.
- You and your association should consider responding by September 8<sup>th</sup>, 2015.
  - Email to: [9-ANM-SoCalOAPM@faa.gov](mailto:9-ANM-SoCalOAPM@faa.gov)
  - Snail mail to:
    - SoCal Metroplex EA
    - Federal Aviation Administration
    - Western Service Center - Operations Support Group
    - 1601 Lind Avenue SW
    - Renton, WA 98057

# Our Concerns

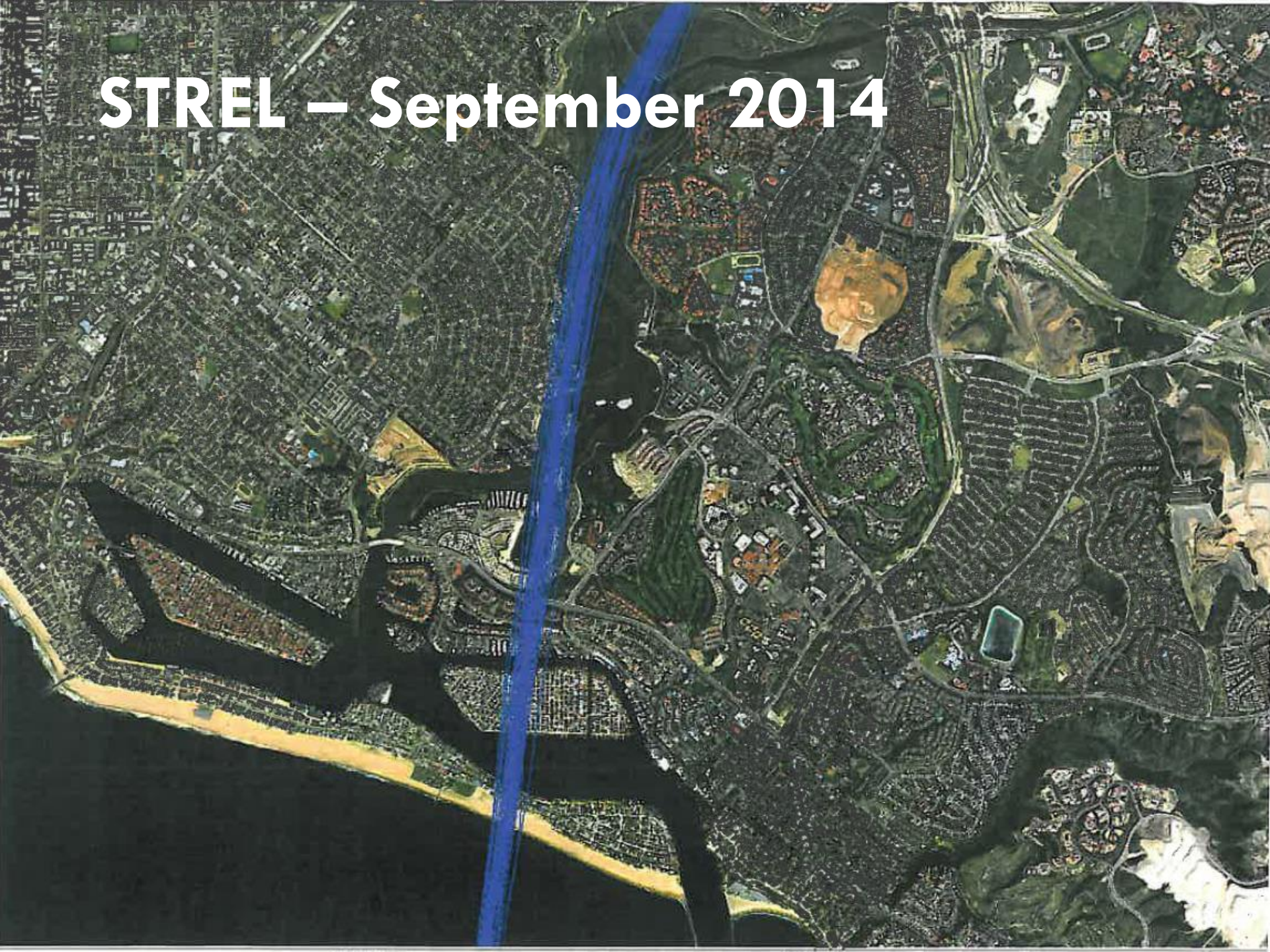
- The EA isn't robust – and shows limited detail so far (see maps)
- We want to be heard and to have our colleagues at JWA at the table.
- We're not sure ...
  - ▣ If the new STREL waypoint is fly-over or fly-by.
  - ▣ What the overall departure path to the STREL will be.
  - ▣ If a 2-turn path in the UNB will or should be considered.
- NextGen generally
  - ▣ Fewer neighborhoods affected, but
  - ▣ Those neighborhoods affected more intensely.
  - ▣ There is no formal city policy about narrowing or fanning – Policy A-17 is *to minimize the impact of JWA operations on the quality of life of Newport Beach residents*



# MAP EXAMPLES

Next Gen, EA for Southern CA Metroplex

# STREL – September 2014

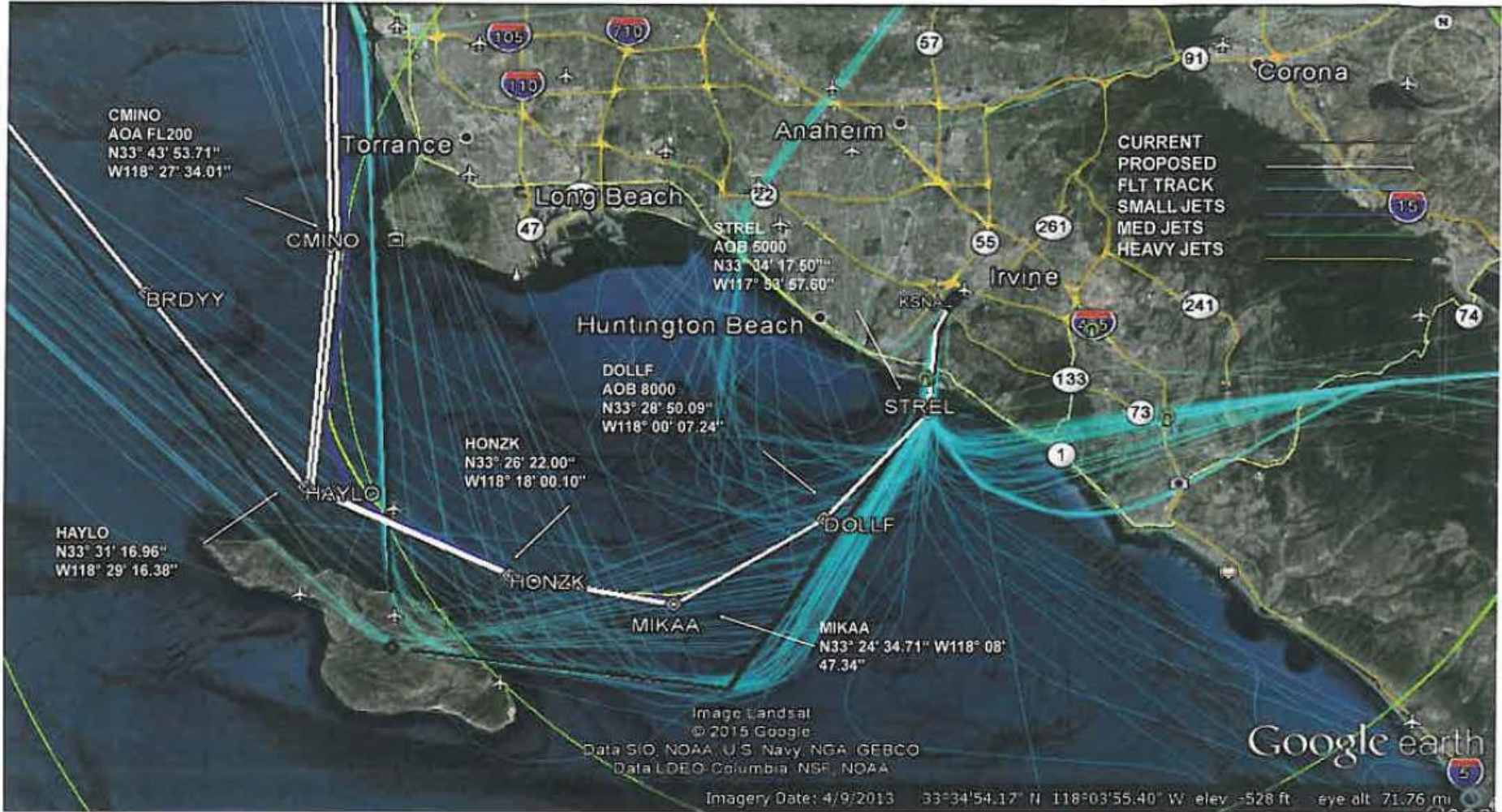


# SNA STREL3 SID RY20; Proposed PIGGN SID

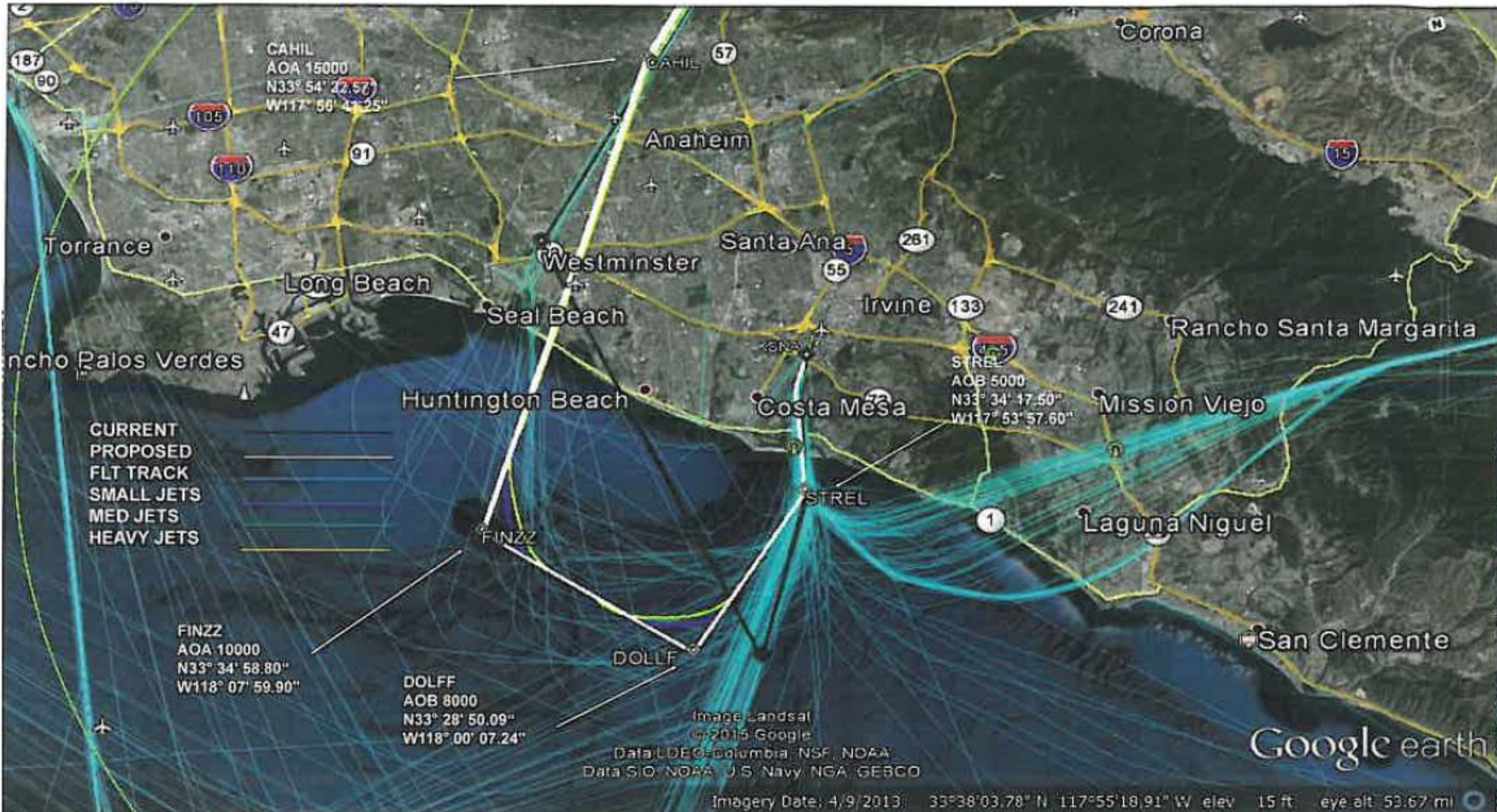
Aircraft may be RADAR vectored to DANAH or PIGGN



# SNA CHANL2 SID; Proposed HAYLO



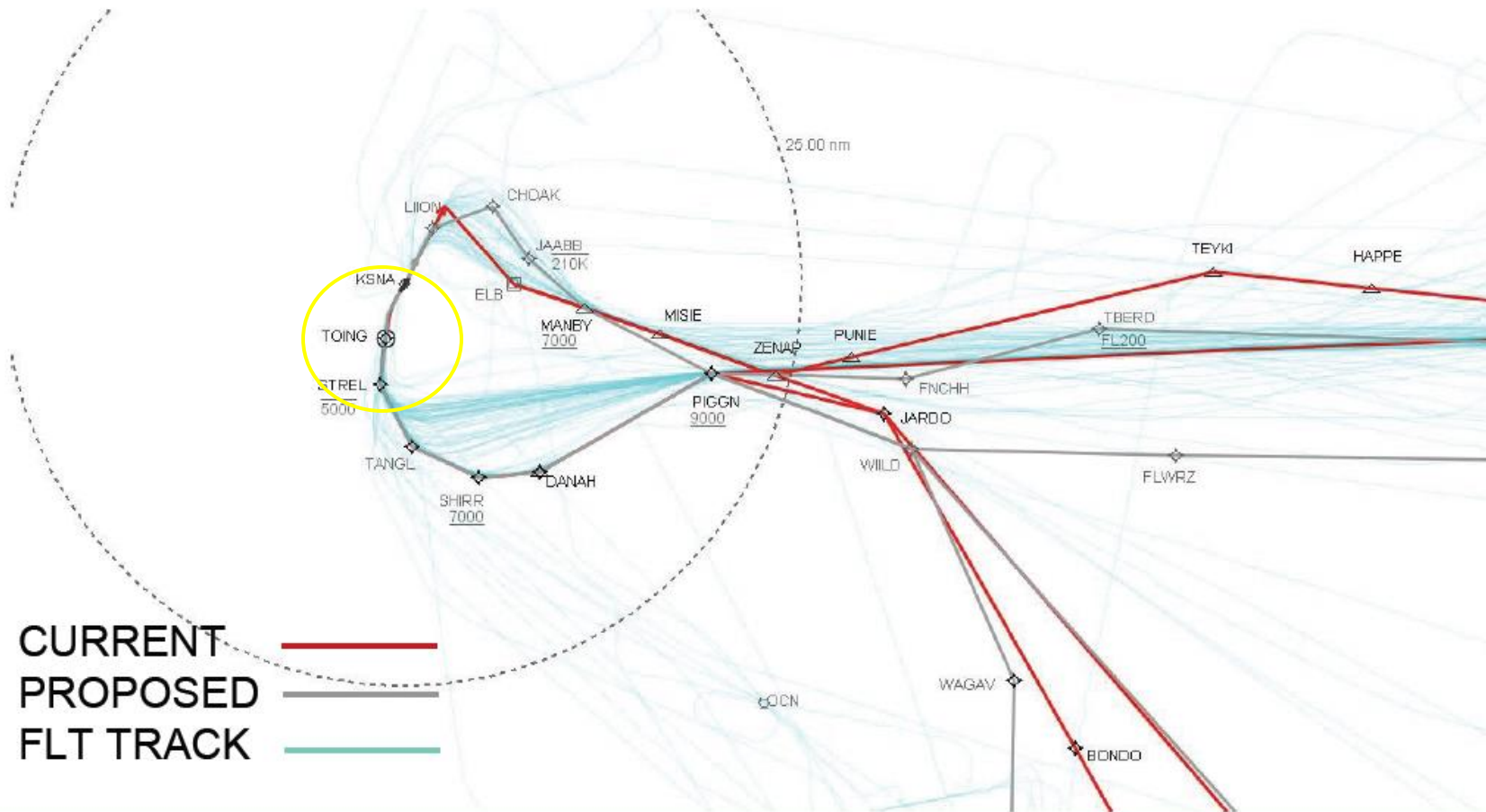
# SNA MUSEL7 SID; Proposed FINZZ SID



# SNA EL TORO/STREL SIDS (Old)

## SNA PIGGN SID (New)

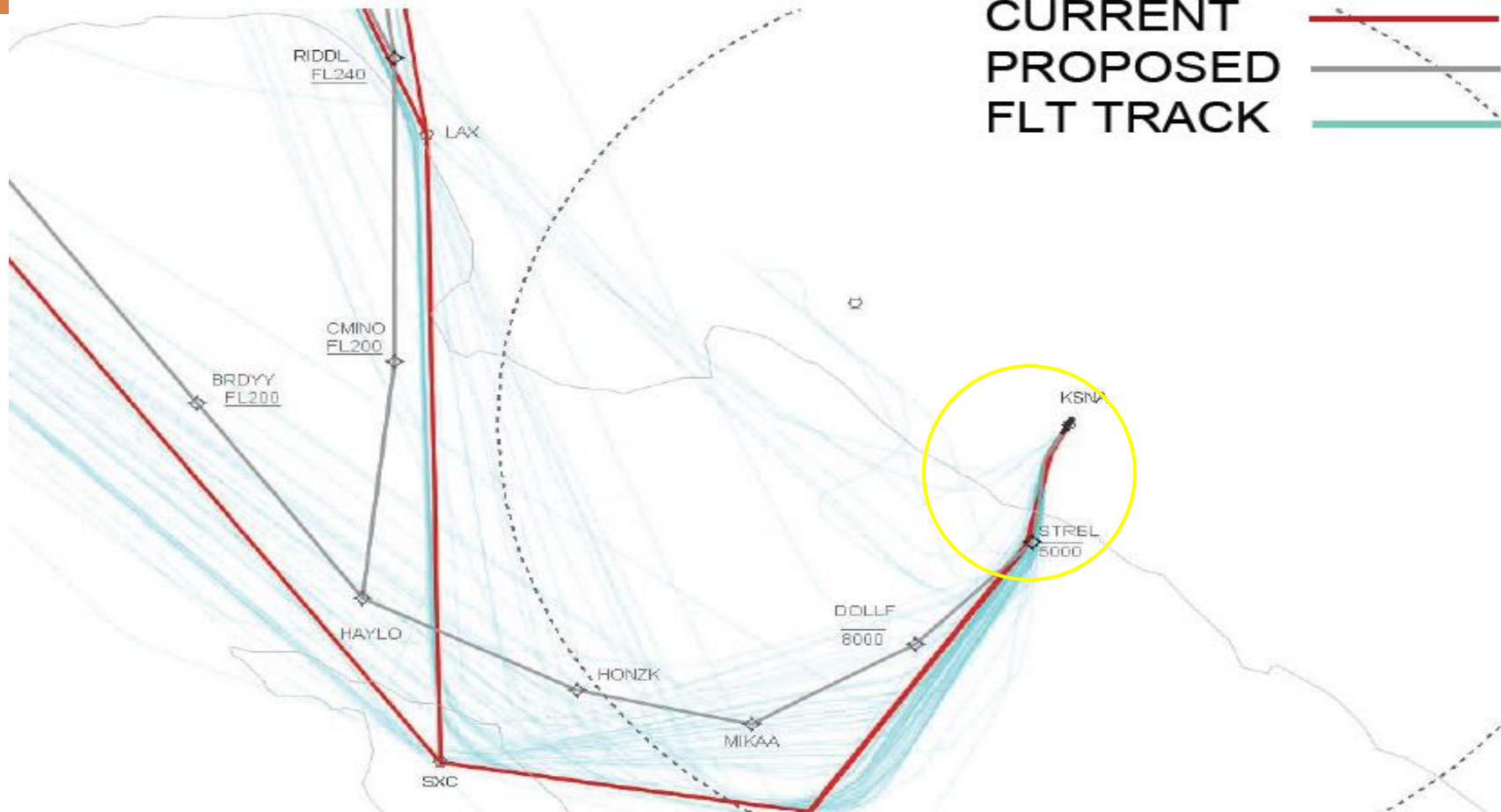
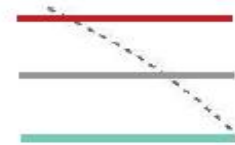
*Close up view*



Federal Aviation  
Administration

# SNA CHANL SID (Old) SNA HAYLO SID (New) *Close up view*

CURRENT  
PROPOSED  
FLT TRACK



**Federal Aviation  
Administration**

# Q&A

Next Gen, EA for Southern CA Metroplex