

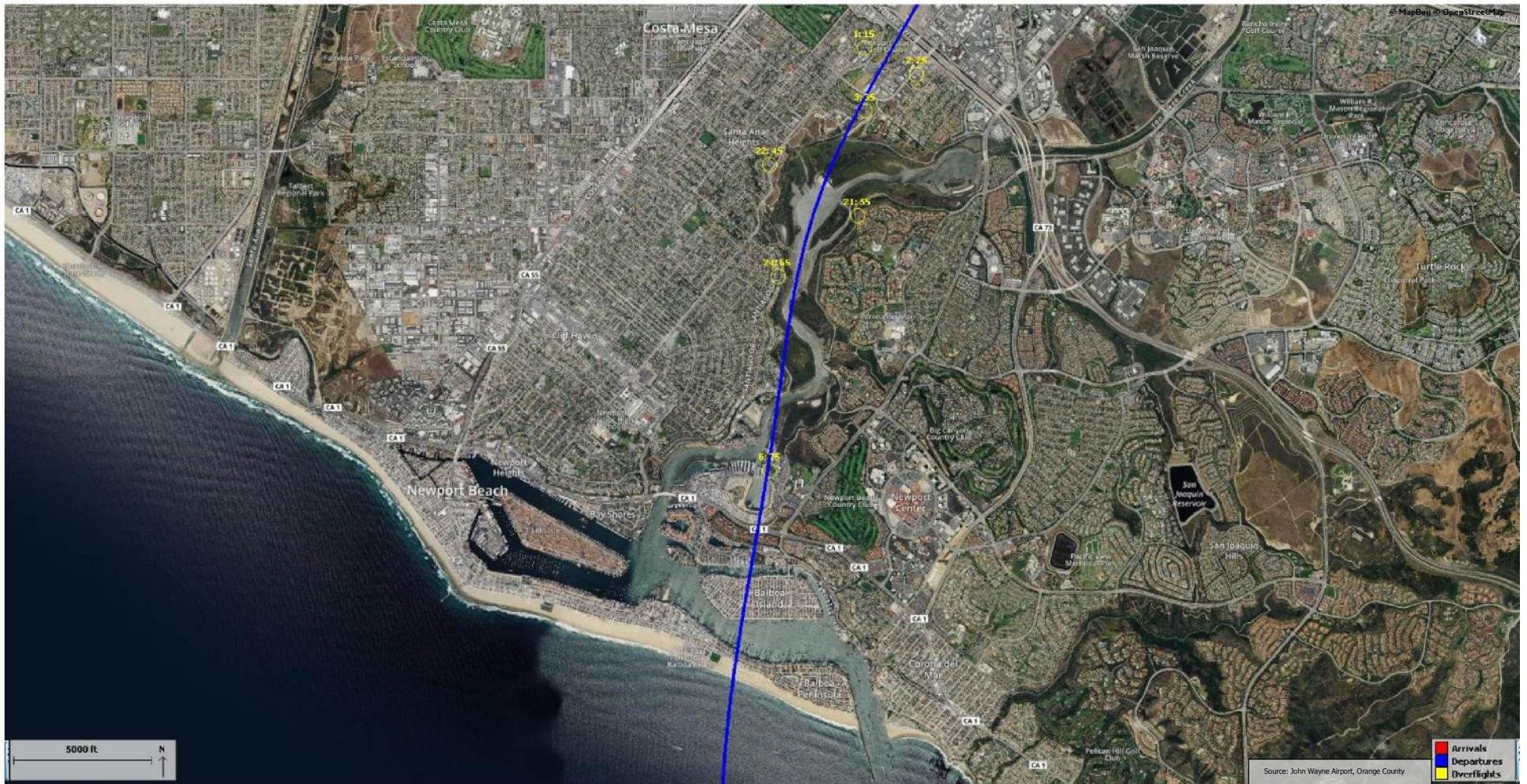
MAY 2017 Update- All things Aviation:



If you'd like additional information, please contact Newport Beach City Manager Dave Kiff at dkiff@newportbeachca.gov.

City and County Continue to Monitor Metroplex

The City and County continue to monitor Metroplex. Accordingly an arbitrary flight, United Airlines Flight 1989 was chosen for pre and post implementation of Metroplex. The following information is for two separate days, February 19, 2017, pre-Metroplex and then March 4, 2017, post-Metroplex. Below you will see the individual track of the flight pre and post Metroplex; the noise readings at each noise monitor and the altitude of the plane closest to approach at each noise monitor. The depictions have been set forth in larger than normal slides, so that you can get a decent view of the same: UAL on 2/19/17:



Map Browser

Latitude: 33.588346 Longitude: -117.882956 Range: 32080.6 feet

5000 ft

■ Arrivals
■ Departures
■ Overflights

Operations Browser

Actual Date/Time	Corr ID	Airline	Flight No	Tail No	Aircraft	Airc Op	Operator	Ca	O
2/19/2017 7:59:55 A	20320370	UA	UAL1989	N436UA	A320	3	D	PAX	23

Noise Events Browser

Start Date/Time	Corr ID	Locati	SEL (d)	LMax	Duration
2/19/2017 8:00:42 AM	20320370	25	95.9	85.6	26
2/19/2017 8:00:44 AM	20320370	15	97.2	88.2	27
2/19/2017 8:00:50 AM	20320370	35	96.1	88.0	24
2/19/2017 8:00:59 AM	20320370	45	87.6	77.7	28
2/19/2017 8:01:02 AM	20320370	55	88.1	77.2	27
2/19/2017 8:01:09 AM	20320370	65	88.0	77.9	27
2/19/2017 8:01:36 AM	20320370	75	87.4	77.8	27

Noise Event Graph

John Wayne Airport
Multiple Noise Events
2/19/2017 8:00:42 AM-2/19/2017 8:02:02 AM

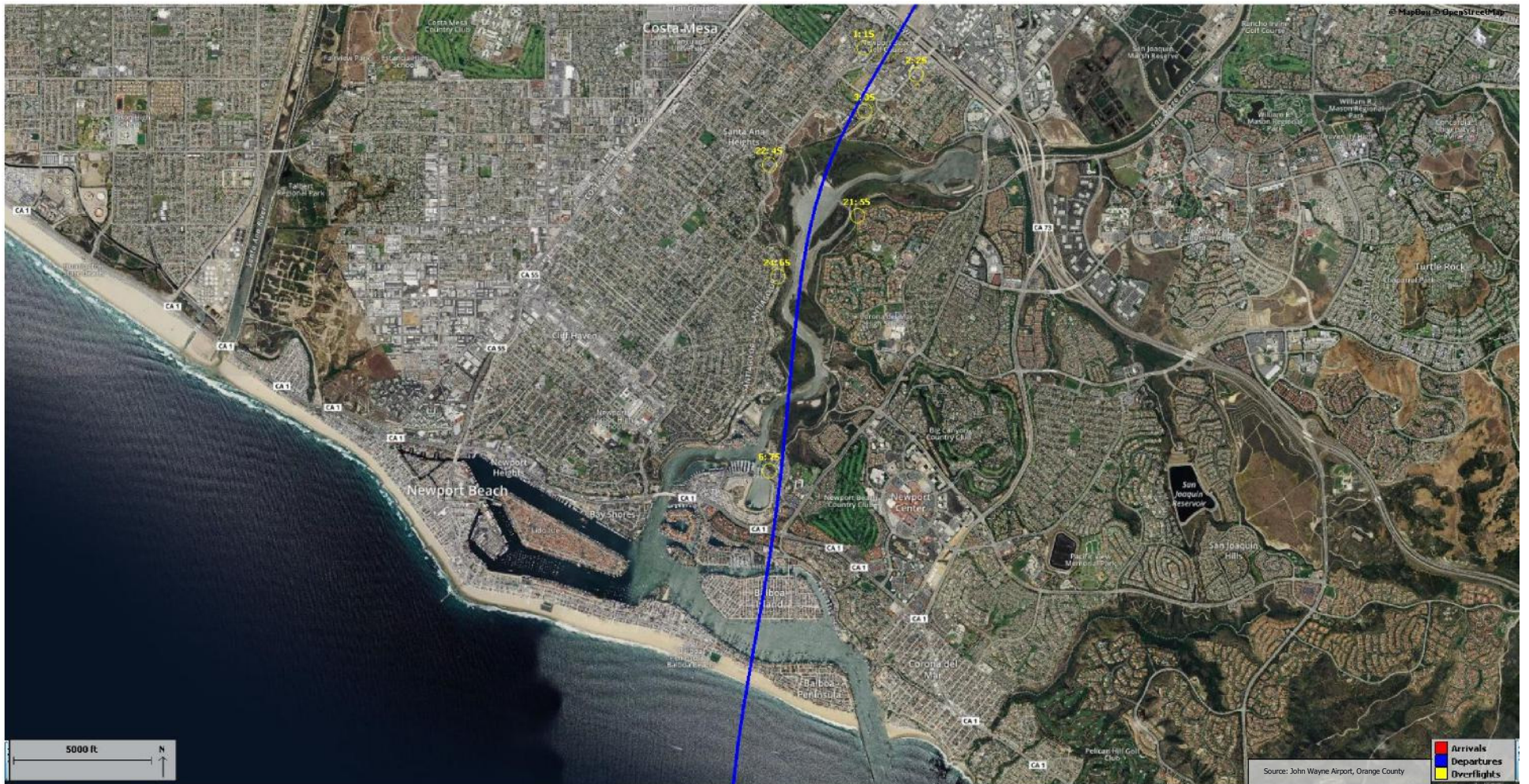
— Loc 2 — Loc 1 — Loc 3 — Loc 22 — Loc 21 — Loc 24 — Loc 6

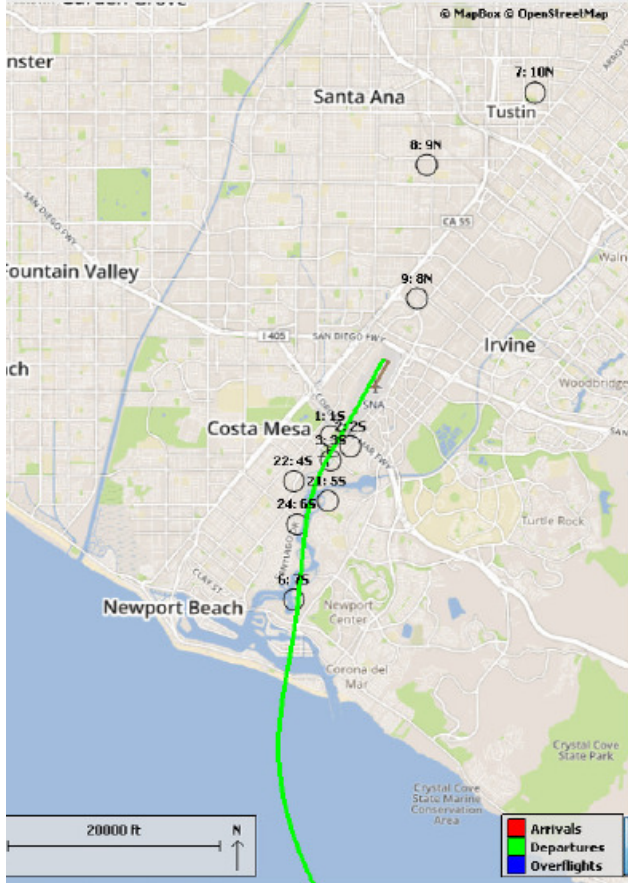
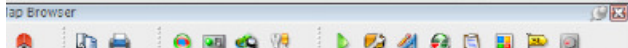
Operation Properties

Complaints		Gates		Profile	
General	Corridors	Targets	Events		
Property Name	Property Value				
Operation No	23633166				
Corr ID	20320370				
Actual Date/Time	2/19/2017 7:59:55 AM				
Release Time					
Proposed Time	2/19/2017 7:55:00 AM				
Track Start	2/19/2017 7:59:55 AM				

Source: John Wayne Airport, Orange County

John Wayne Airport Access and Noise Office
Post-Metroplex | UAL1989
Saturday, March 4, 2017





Operations Browser

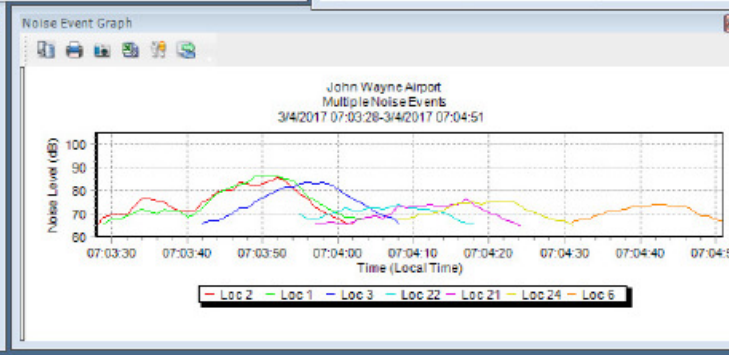
Operation	Corr ID	Actual Date/Time	Wheels Down	Wheels Up	Flight N/	Op	Aircraf	Tail No	Other Po	Bea
23091671	20326612	3/4/2017 07:02:55	-	3/4/2017 07:03:32	UA1989	D	A320	N437UA	KORD	1034

Noise Events Browser

Corr ID	Start Date/Time	Locati	SEL (d	LMax (d	Dur
20326612	3/4/2017 07:03:28	25	93.9	85.2	35
20326612	3/4/2017 07:03:29	15	95.1	85.9	35
20326612	3/4/2017 07:03:42	35	92.7	83.4	27
20326612	3/4/2017 07:03:55	45	89.7	73.8	24
20326612	3/4/2017 07:03:57	55	85.6	76.3	28
20326612	3/4/2017 07:04:08	65	85.9	75.3	24
20326612	3/4/2017 07:04:31	75	84.5	73.8	21

Operation Properties

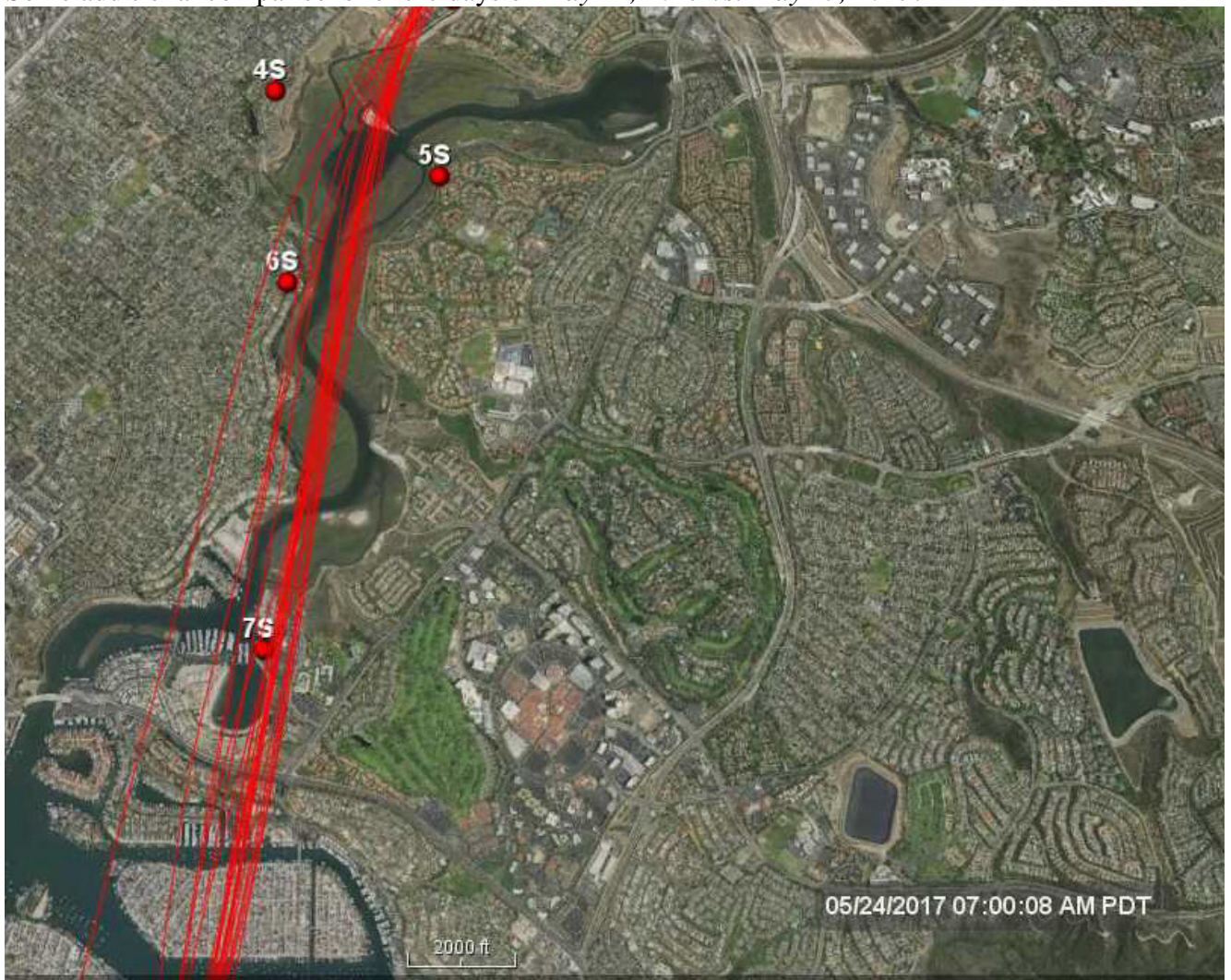
Point	Time	Time Diff	Latitude	Longitude	Altitude	Height AG	Velocity (k
0	07:02:55	00:00:00	33.6816	-117.86	62	62	36.9
1	07:02:56	00:00:01	33.6814	-117.86	62	62	27.2
2	07:03:00	00:00:05	33.6811	-117.86	62	62	27.2
3	07:03:04	00:00:09	33.6805	-117.86	62	62	40.8
4	07:03:08	00:00:13	33.6797	-117.86	62	62	56.4
5	07:03:12	00:00:17	33.6786	-117.86	62	62	71.9
6	07:03:16	00:00:21	33.6773	-117.86	62	62	87.5
7	07:03:20	00:00:25	33.6757	-117.86	62	62	101.1



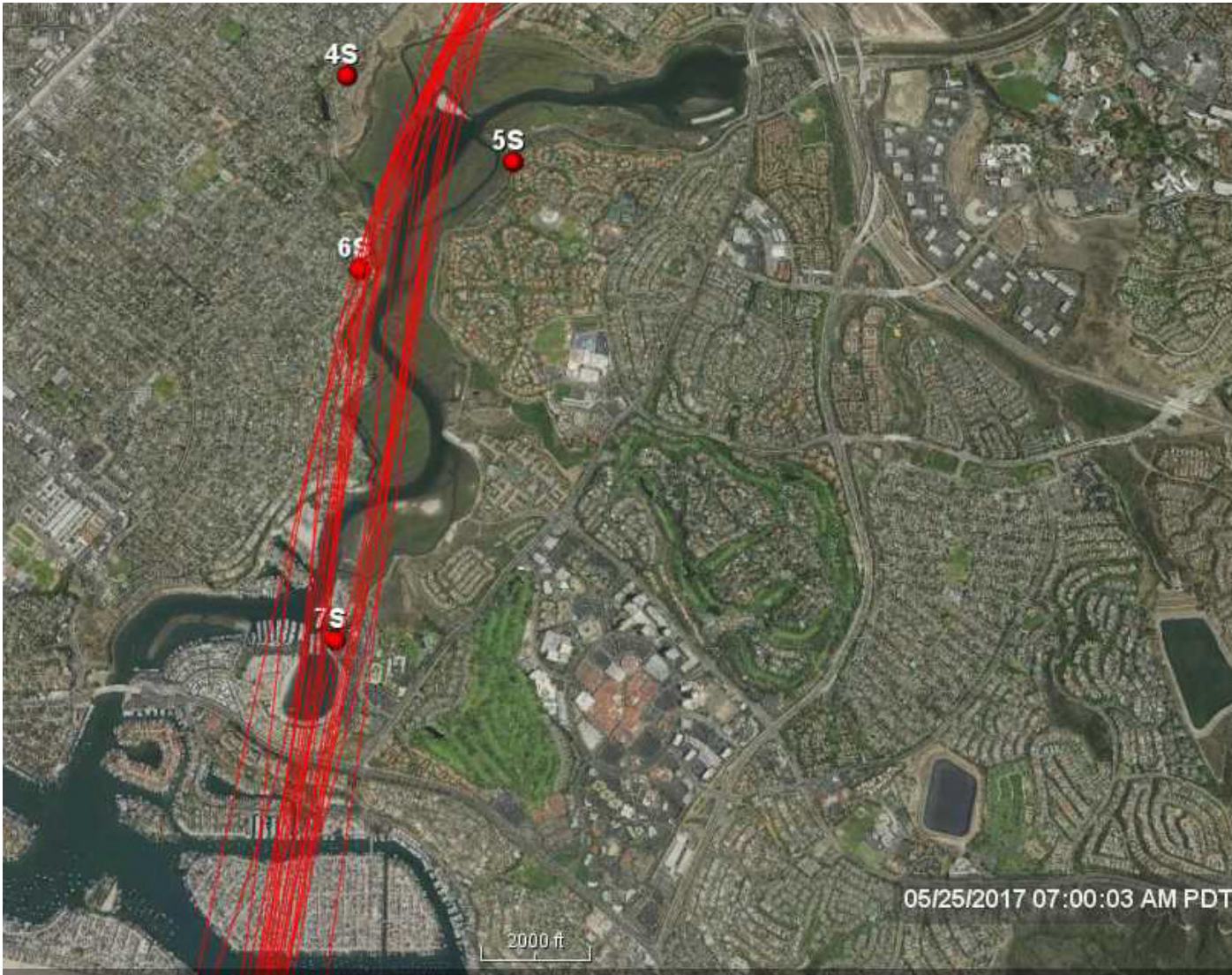
Finally the altitudes of each closest to approach at each noise monitor:

NMS	2/19/2017	3/4/2017
1	765 ft.	839 ft.
2	745 ft.	812 ft.
3	1158 ft.	1217 ft.
4	1466 ft.	1557 ft.
5	1522 ft.	1629 ft.
6	1722 ft.	1812 ft.
7	2220 ft.	2240 ft.

Some additional comparisons for the days of *May 24, 2017 vs. May 25, 2017*:



5/25/17:



VOLANS Update

This summer the VOLANS flight tracking system at the airport, which you can access at anytime, will be updated. The updates will include a mobile application for your phone so you can track flights at the airport.

JWA- April 2017

Airline passenger traffic at John Wayne Airport decreased in April 2017 as compared with April 2016. In April 2017, the Airport served 851,169 passengers, a decrease of 1.2% when compared with the April 2016 passenger traffic count of 861,164. Commercial aircraft operations decreased 1.8% and commuter aircraft operations decreased 55.0% when compared with April 2016 levels.

In April 2017 the Average Daily Departures (ADDs) were 121.37 vs. 124.65 for April of 2016.

Airports in the Region

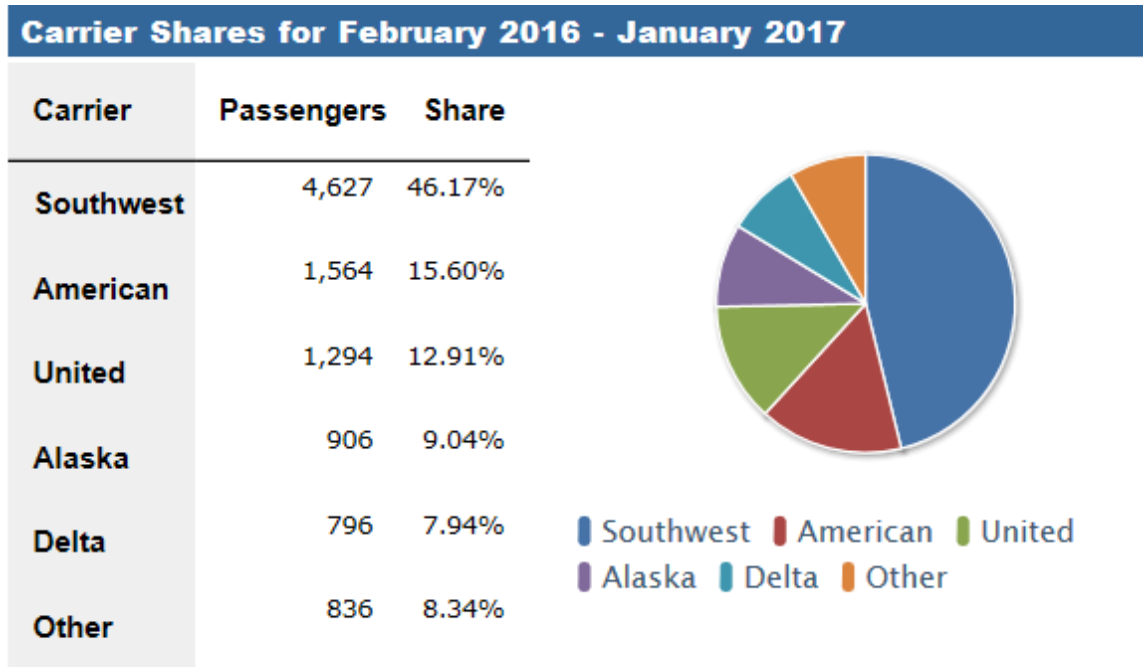
Ontario-April 2017

Ontario International Airport showed another strong month with an increase in passengers of +4.27% for April and +6.09% for the first four months of the year with 1,409,506 passengers.

Long Beach- Resurgence

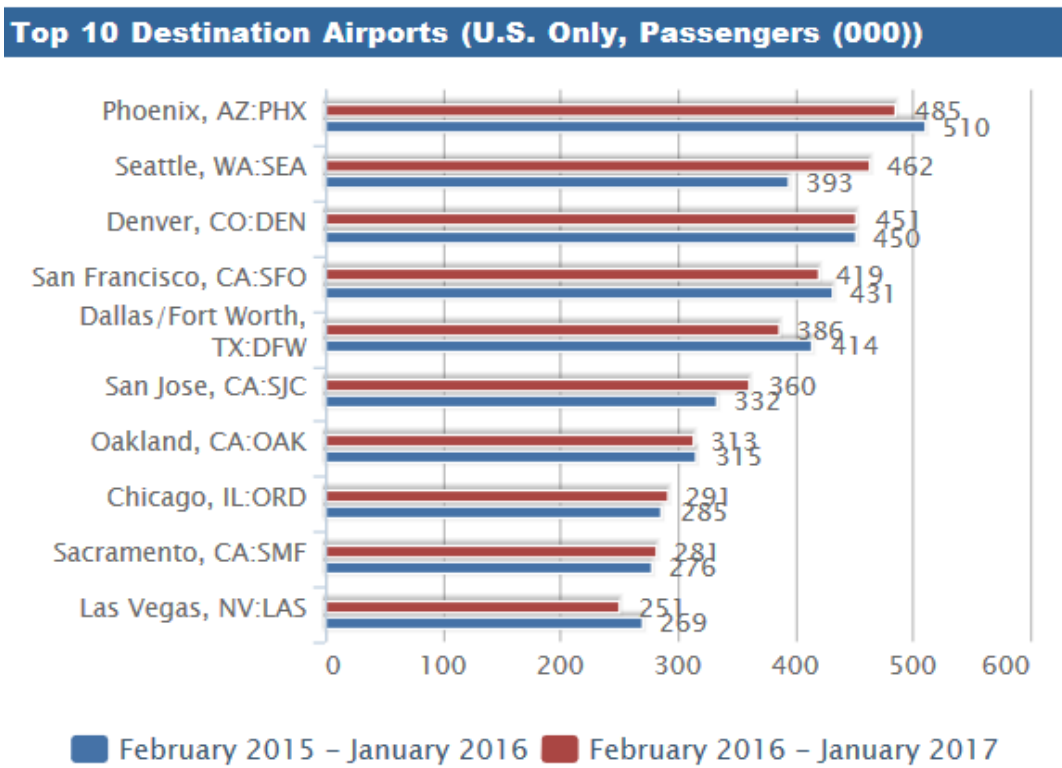
Long Beach Airport shows significant growth for 2017. In April 2017, the airport with 317,317 passengers saw a gain of +58% over the same month last year and with 1,214,207 passengers for the first four months of the year is + 54% ahead of last year.

JWA Carrier Share



Based on enplaned passengers(000) both arriving and departing.

JWA Destinations



Source: T-100 Domestic Market (US Carriers).