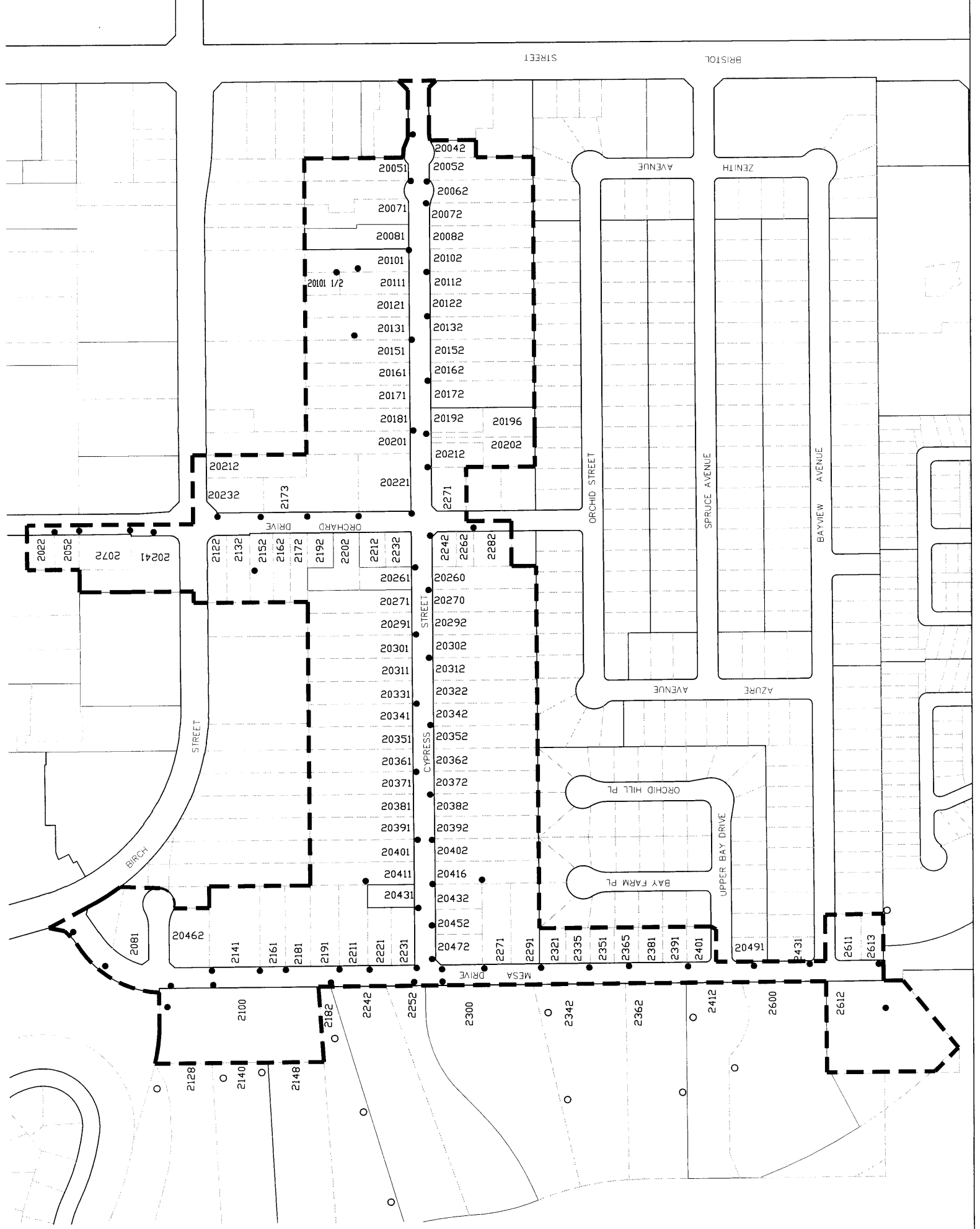


PROPOSED AMENDED BOUNDARY OF UNDERGROUND UTILITIES DISTRICT No. 19 (SANTA ANA HEIGHTS—MESA DRIVE AND CYPRESS STREET)

CITY OF NEWPORT BEACH, COUNTY OF ORANGE
STATE OF CALIFORNIA



ACCEPTED AND FILED AT THE
REQUEST OF
CITY OF NEWPORT BEACH

DATE _____ TIME _____ FEE \$ _____
INSTRUMENT # _____ PAGE _____
BOOK _____ OF MAPS OF ASSESSMENT AND COMMUNITY
FACILITIES DISTRICTS IN THE OFFICE OF THE
RECORDER OF THE COUNTY OF ORANGE,
STATE OF CALIFORNIA.

BY _____ TOM DALY
COUNTY CLERK RECORDER
DEPUTY _____
EXEMPT RECORDING PER
G.C. 6103

UNDERGROUND UTILITIES DISTRICT NO. 19 WAS
FORMED BY AN ACTION OF THE CITY COUNCIL,
DESCRIBED BY A MINUTE ORDER DATED JUNE 14,
2005, RESOLUTION NO. 2005-034, AND AMENDED
BY MINUTE ORDER DATED _____, 2009,
RESOLUTION NO. _____.

STEPHEN G. BADUM, P.E.
PUBLIC WORKS DIRECTOR

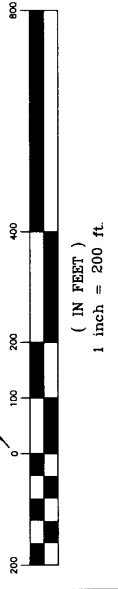
LEGEND:

- POLE TO BE REMOVED
 - o POLE TO REMAIN IN PLACE
 - - - DISTRICT BOUNDARY
- 2122 PARCEL ADDRESS

THE BOUNDARY OF THE PROPOSED DISTRICT COINCIDES
WITH THE ASSESSOR'S PARCELS WITHIN THE BOUNDARY
SHOWN ON THIS MAP. FOR PARTICULARS OF LINES AND
DIMENSIONS OF ASSESSOR'S PARCELS, REFERENCE IS
MADE TO THE MAPS OF THE LOS ANGELES COUNTY
ASSESSOR.



GRAPHIC SCALE



HARRIS & ASSOCIATES
PROGRAM MANAGERS
CONSTRUCTION MANAGERS
CIVIL ENGINEERS