



CITY OF NEWPORT BEACH PARKS, BEACHES AND RECREATION COMMISSION AGENDA

Council Chambers - 100 Civic Center Drive

Tuesday, June 4, 2019 - 6:00 PM

Parks, Beaches and Recreation Commission Members:

Walt Howald, Chair
David Granoff, Vice Chair
Hassan Archer, Commissioner
Diane Daruty, Commissioner
Roy Englebrecht, Commissioner
Laird Hayes, Commissioner
Heather Ignatin, Commissioner

Staff Members:

Laura Detweiler, Recreation & Senior Services Director
Sean Levin, Recreation & Senior Services Deputy Director
Micah Martin, Deputy Public Works Director
Kevin Pekar, Parks and Landscape Superintendent
Mariah Stinson, Administrative Support Specialist

The Parks, Beaches and Recreation Commission is subject to the Ralph M. Brown Act. Among other things, the Brown Act requires that the Parks, Beaches and Recreation Commission agenda be posted at least seventy-two (72) hours in advance of each regular meeting and that the public be allowed to comment on agenda items before the Commission and items not on the agenda but are within the subject matter jurisdiction of the Parks, Beaches and Recreation Commission. The Chair may limit public comments to a reasonable amount of time, generally three (3) minutes per person.

It is the intention of the City of Newport Beach to comply with the Americans with Disabilities Act ("ADA") The City of Newport Beach's goal is to comply with the Americans with Disabilities Act (ADA) in all respects. If, as an attendee or a participant at this meeting, you will need special assistance beyond what is normally provided, we will attempt to accommodate you in every reasonable manner. Please contact the Recreation Department at least forty-eight (48) hours prior to the meeting to inform us of your particular needs and to determine if accommodation is feasible at (949) 644-3158 or recreation@newportbeachca.gov.

NOTICE REGARDING PRESENTATIONS REQUIRING USE OF CITY EQUIPMENT

Any presentation requiring the use of the City of Newport Beach's equipment must be submitted to the Recreation Department 24 hours prior to the scheduled meeting.

I. CALL MEETING TO ORDER

II. ROLL CALL

IV. NOTICE TO THE PUBLIC

The City provides a yellow sign-in card to assist in the preparation of the minutes. The completion of the card is not required in order to address the PB&R Commission. If the optional sign-in card has been completed, it should be placed in the box provided at the podium.

The PB&R Commission of Newport Beach welcomes and encourages community participation. Public comments are generally limited to three (3) minutes per person to allow everyone to speak. Written comments are encouraged as well. The Commission has the discretion to extend or shorten the time limit on agenda or non-agenda items. As a courtesy, please turn cell phones off or set them in the silent mode.

V. PUBLIC COMMENTS ON CONSENT CALENDAR

This is the time in which PB&R Commissioners may pull items from the CONSENT CALENDAR for discussion (Items V-A thru V-C). Public comments are also invited on Consent Calendar items. Speakers must limit comments to three (3) minutes. Before speaking, please state your name for the record. If any item is removed from the Consent Calendar by a PB&R Commissioner, members of the public are invited to speak on each item for up to three (3) minutes per item.

All matters listed under CONSENT CALENDAR are considered to be routine and will all be enacted by one motion in the form listed below. Commissioners have received detailed staff reports on each of the items recommending an action. There will be no separate discussion of these items prior to the time the PB&R Commission votes on the motion unless a Commissioner requests specific items to be discussed and/or removed from the Consent Calendar for separate action.

V. CONSENT CALENDAR

A. Minutes of the PB&R Commission Meeting of May 7, 2019

Waive reading of subject minutes, approve and order filed.

[05-07-2019 PBR MINUTES](#)

B. Parks and Trees, and Beach Maintenance Divisions Activities Report

[MOD Activity Report](#)

C. RSS Activity Report

Recieve/File Activity Report of past and upcoming projects and events.

[RSS Activity Report](#)

VI. CURRENT BUSINESS

A. Boys & Girls Club- Program Overview

Presented by Jonathon Harmon

B. Appeal of Denial for Tree Removal Request - 720 Jasmine Avenue

Staff recommends that the PB&R Commission consider the appeal from John Buckingham (resident at 927 Gardenia Way) of staff's denial of the removal of a City Sugar Gum tree in front of 720 Jasmine Avenue.

[Staff Report](#)

[Attachment A](#)

[Attachment B](#)

[Attachment C](#)

[Attachment D](#)

[Attachment E](#)

C. City Council Policy G-6 - Maintenance and Planting of Parkway Trees Exhibits

Staff recommends that PB&R Commission review the proposed City Council Policy G-6 Exhibits, which include revisions to the Parkway Tree Designation List, and the additions from the Eastbluff Homeowners Community Association to the Street Tree Designation List, for City Council review and approval.

[Staff Reports](#)

[Attachment A Rpt G-6](#)

[Attachment B Rpt G-6](#)

[Attachment C Rpt G-6](#)

D. Appeal of Denial for Special Tree Removal - 1710 Candlestick Lane

Staff recommends that PB&R Commission consider the appeal from John Devine, property owner, of staff's denial of the removal of a Special City Lemon-scented Gum tree in front of 1710 Candlestick Lane.

[Staff Report](#)

[Attachment A 1710 Candlestick](#)

[Attachment B 1710 Candlestick](#)

[Attachment C 1710 Candlestick](#)

[Attachment D 1710 Candlestick](#)

[Attachment E 1710 Candlestick](#)

VII. BOARD/COMMITTEE/COMMISSION ANNOUNCEMENTS OR MATTERS WHICH MEMBERS WOULD LIKE PLACED ON A FUTURE AGENDA FOR DISCUSSION, ACTION OR REPORT (NON-DISCUSSION ITEM)

VIII. PUBLIC COMMENTS ON NON-AGENDA ITEMS

Public comments are invited on non-agenda items generally considered to be within the subject matter jurisdiction of the PB&R Commission. Speakers must limit comments to three (3) minutes. Before speaking, we invite, but do not require, you to state your name for the record.

IX. ADJOURNMENT

CITY OF NEWPORT BEACH

Parks, Beaches & Recreation Commission Regular Meeting May 7, 2019 – 6:00 PM

I. CONVENE MEETING OF THE PARKS BEACHES & RECREATION COMMISSION TO ORDER – 6:00 PM

II. ROLL CALL

Present: Walt Howald, Chair
Hassan Archer, Commissioner
Diane Daruty, Commissioner
Roy Englebrecht, Commissioner
Laird Hayes, Commissioner
Heather Ignatin, Commissioner

Excused: David Granoff, Vice Chair

Staff: Laura Detweiler, Recreation & Senior Services Director
Sean Levin, Recreation & Senior Deputy Director
Micah Martin, Deputy Public Works Director
Kevin Pekar, City Arborist
Teri Craig, Administrative Support Specialist
Mariah Stinson, Administrative Support Specialist

III. NOTICE TO THE PUBLIC

IV. PUBLIC COMMENTS ON CONSENT CALENDAR

V. CONSENT CALENDAR

A. Minutes of the April 2, 2019, PB&R Commission Meeting.

Recommendation: Waive reading of subject minutes, approve and order filed.

B. Parks, Trees & Beach Maintenance Divisions Activity Report.

Recommendation: Receive/file Activity Report.

Director Martin gave the Commission an update on tar that had been showing up on the City's beaches and what procedures the City followed to see where the tar was coming from.

City Arborist Pekar gave the Commission an update on how the City was dealing with the Tulip Scale disease that was effecting City trees.

C. Recreation & Seniors Services Activity Report.

Recommendation: Receive/file Activity Report of past and upcoming projects and events.

D. Tree Reforestation – 1023 E. Balboa Boulevard

Recommendation: Approve the reforestation request of Ray Batelli of a City Ficus tree located at 1023 E. Balboa Boulevard and replace with a 48” box Queen Palm tree. The applicant has met the procedural requirements for reforestation established by City Council Policy G-1. The applicant will assume all costs.

E. Tree Reforestation – 1715 Galatea Terrace

Recommendation: Approve the reforestation request of Brittney Rosen of a City Little Gem Magnolia tree located at 1715 Galatea Terrace and replace with a 36” box African Sumac tree. The applicant, Brittney Rosen, has met the procedural requirements for reforestation established in City Council Policy G-1. The applicant will assume all costs.

F. Tree Reforestation – 1515 bordering 1521 Bayadere Terrace

Recommendation: Approve the reforestation request of Patrick Papaccio of 1507 Bayadere Terrace of a City Ficus tree located at 1515 Bayadere Terrace, bordering 1521 Bayadere Terrace and replace with a 48” box Purple Orchid tree. The applicant has met the procedural requirements for reforestation established by City Council Policy G-1. The applicant will assume all costs.

Motion by Commissioner Englebrecht; second by Commissioner Archer to accept items V-A through V-F of the Consent Calendar. Motion carried by unanimous vote with Vice Chair Granoff absent.

VI. CURRENT BUSINESS

A. FiiN Program Overview

Presentation by Recreation Supervisor Derek Breaux

Supervisor Breaux discussed the Fostering interests in Nature Program, FiiN, with the Commission. He described how the FiiN program came to be, who the local partners were, a brief overview of the program and costs and funding for the program.

Heather Cieslak from Newport Bay Conservancy articulated her agency’s participation in the program.

Scottie Roach and Theresa Collins, Executive Directors of Camp James, went over what the students participated in during the evening times.

Mario Cuevas, a 5th-grade teacher, disclosed his experience and gratification about the program and the Staff who ran it.

Various staff answered questions from the Commission about fundraising, the Big Canyon Restoration project, how staff determined which students were picked to attend the program, how schools planned to keep kids engaged in nature after they attended the program, marketing of the program, how many schools participated in the program, if there was a desire to expand to more schools and what Title 1 schools were.

Commissioner Daruty expressed her gratitude for the camp and staff's hard work on running the program. She stated that she would be happy to help on finding funding for the program.

Commissioner Englebrecht articulated that he was excited to be a part of a program that was so influential to kids.

Commissioner Archer concurred that it was a fantastic program.

Chair Howald opened the public comment; seeing none he closed the public comment.

B. Lawn Bowling Program Overview

Presentation by Recreation Manager Justin Schmillen

Manager Schmillen introduced two members from the Newport Lawn Bowling Club who presented the program to the Commission. The Commission watched a short video explaining how the Newport Lawn Bowling Club was established, history, rules and how to play.

Charlie Herbert, World Champion Lawn Bowler, and Brian Stewart, a Board Officer, explained how the club was promoting the game to younger aged community members, they expressed how they wanted to have the City more involved with the sport, the open house the club puts on for the public annually and further explanation on how to play Lawn Bowling.

Questions were answered about membership costs, private parties, if the club was open to the public, club expenses and finances and how much it costs for equipment to play the game.

Chair Howald opened the public comment; seeing none he closed the public comment.

C. Appeal of Denial of a Request for a Tree Removal – 720 Jasmine Avenue

Consider the request for appeal by John Buckingham, resident at 927 Gardenia Way, of the denial for removal of a City Sugar Gum tree located in front of 720 Jasmine Avenue.

Item was tabled until a future meeting.

VII. ANNOUNCEMENTS/FUTURE AGENDA ITEMS

PB&R Commission / staff announcements/ Ad Hoc Committee updates or matters which Commissioner members would like placed on future agendas for further discussion (this is a non-discussion item).

Director Martin gave a follow up on the Harbor Day Event that happened at Mariners Elementary School.

Director Detweiler expressed that Policy B-17 and Grant Howald Park were to be presented to Council on May 14, 2019. She gave an update on Sunset View Park, announced the next upcoming Youth Sports Commission meeting was to be on June 19, 2019, gave a brief description of the City's upcoming summer camps and explained the status of the Buck Gully illegal trail.

Staff answered questions about the cleanup and unauthorized trail at Buck Gully.

The Commission and Staff commenced, congratulating Commissioner Englebrecht and Staff member Teri Craig for their many years of service to the City.

VIII. PUBLIC COMMENTS ON NON-AGENDA ITEMS

Public comments are invited on non-agenda items generally considered to be within the subject matter jurisdiction of the PB&R Commission. Speakers must limit comments to three (3) minutes. Before speaking, we invite, but do not require, you to state your name for the record. The Commission has the discretion to extend or shorten the speakers' time limit on non-agenda items, provided the time limit adjustment is applied equally to all speakers.

None.

IX. ADJOURNMENT IN MEMORY OF DAYLE LUSK – 7:36 p.m.

Submitted by: _____
Mariah Stinson, Admin Support Specialist

Approved by: _____
Walt Howald, Chair



== CITY OF ==

NEWPORT BEACH

PB&R Commission Staff Report

Agenda Item _____
June 4, 2019

TO: Parks, Beaches & Recreation Commission

FROM: Public Works Department / Municipal Operations Division
Micah Martin, Deputy Public Works Director
949 644-3055, mmartin@newportbeachca.gov

TITLE: Parks and Trees, and Beach Maintenance Divisions Activities Report

2019 Arbor Day Event – Mariners Elementary School

The 2019 Arbor Day Celebration was held at Mariners Elementary School on Thursday, April 25. Staff planned the event with the assistance of School Principal Matt Broesamle and NMUSD Board Member Karen Yelsey. Landscape Manager Dan Sereno emceed the event and provided a presentation on the transformation of Newport Beach over the past 70 years, showing how it converted from an area with very few trees to one containing the vast and diverse urban forest it has today.

To celebrate the occasion, Mayor Diane Dixon presented an Arbor Day Proclamation to Principal Broesamle. Walt Howald, Chair of the Parks, Beaches, and Recreation Commission, spoke on the importance of trees as a natural resource. California Department of Forestry & Fire Protection’s Urban Forester Lynnette Short presented the Tree City USA Flag.

The 3rd graders displayed artwork, while some of the 3rd graders read poems they wrote in celebration of Arbor Day. After the ceremony, the students, assisted by the City Arborist Kevin Pekar with his crewmembers Harold Link and Brian George, and representatives from Great Scott Tree Services, planted trees at Mariners Park. This was an outstanding celebration of Arbor Day!



Public Works Landscape Maintenance



Our Public Works team is always on the lookout for opportunities to beautify our city. The park staff has continued replacing aged plant material with drought tolerant plants. Striving to save water, the park staff has slowly been transitioning out the Indian hawthorn plants (*Raphiolepis indica*) with many varieties of agaves, aloes, and aeoneums. Our latest work is at Irvine Terrace Park, located at 721 Evita Circle. This area of the park shares a lot of history with our Newport Beach Sister City Okazaki, Japan. The sculptures in these planters were gifts given to the City on special anniversaries since 1984 from the Okazaki South Rotary Club.

The most recent sculpture, the Tokugawa statue was given to the City of Newport Beach in 2014 from the City of Okazaki in celebration of the 30th anniversary of our sister city relationship. With a fresh coat of mulch to keep the weeds down, along with enhancing the planters, this park is looking great! Please make sure to stop by and enjoy the park!

Balboa Pier Piling

High surf measuring 10 to 12 feet, with strong currents and waves, displaced a piling at the Balboa Pier. City staff monitored the situation until the free-floating piling made its way ashore. Municipal Operations Division crew retrieved it, cut it up, and hauled away the pieces. The Pier was inspected by a Public Works Inspector and determined to be safe. The piling will be replaced in an upcoming project later this year.

Trees Maintenance

The City tree maintenance contractor Great Scott Tree Service trimmed trees in Newport Coast, Eastbluff, and Buffalo Hills areas and responded to tree-related emergencies.

Month of:	# of Trees Trimmed:	# of Trees Removed:	# of Trees Planted:	# of Problem Trees Removed
April	2410	50	45	0

Prepared by:
Kevin Pekar, Landscape Manager
Parks and Trees Division

John Salazar, Manager
Field Maintenance Division



CITY OF

NEWPORT BEACH

Recreation & Senior Services Department Monthly Activities Report



To: PB&R Commission
From: Laura Detweiler, RSS Director
Sean Levin, RSS Deputy Director
Celeste Jardine-Haug, Senior Services Manager

Newport Balboa Rotary Youth Track Meet Recognition Dinner

On Friday, April 26, athletes from Newport Beach and the surrounding areas joined us at Newport Harbor High School for the Youth Track Meet of Champions. At this annual event, kids between the ages of 6 and 15 years old compete in multiple track and field events such as the 50m dash, 200m run, and the long jump among other events. A few outstanding athletes who represent Newport Beach were recognized for their accomplishments at the Newport-Balboa Rotary Recognition dinner. At this dinner in honor of Frank E. Anderson, one boy and one girl from each division is presented the coveted Okazaki Friendship Medal for their celebrated achievements at the track meet.



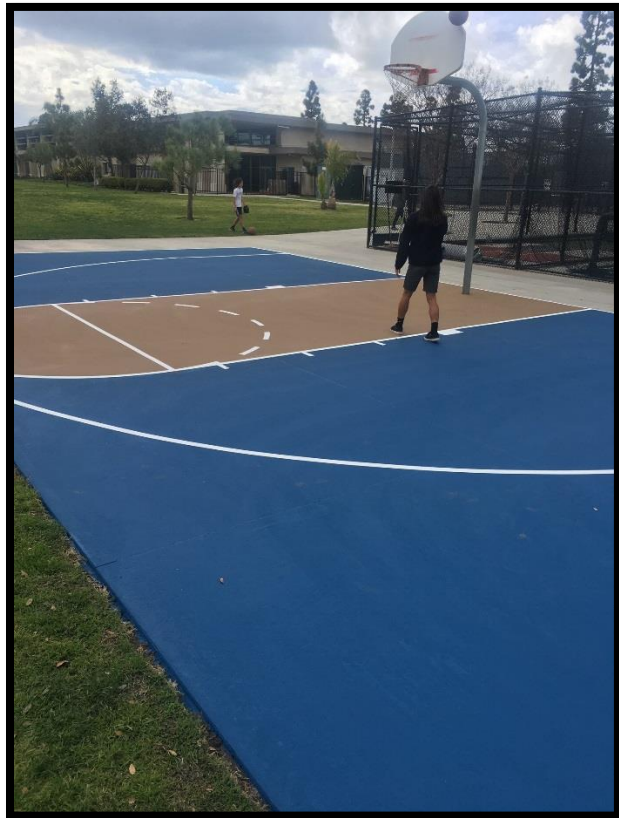
Record Broken at the Youth Track Meet of Champions

At the Youth Track Meet of Champions Milo Cid from Newport Heights Elementary School broke a record. Milo was in the Division 2011 (children 8 years & younger) and broke the long jump record which had been in place since 2003! The old record was a distance of 10 feet 2 inches and his jump was recorded at a distance of 10 feet 6 inches. Something extra special for the Cid family is that Milo now joins his mother Jaycee, who has held a record in Softball Toss since 1995.



Outdoor Basketball Hoop Improvements

Just in time for all the summer activities, a much-needed replacement of the basketball backboards & rims occurred at Channel Place, Mariners, and West Newport Park. Staff monitors the condition of the basketball court equipment and replaces them on an as needed basis.



Improvements to Playground Surfacing

RSS staff attended a Playground Surfacing Symposium in El Segundo to learn how to assess and plan for maintenance needs and make repairs to rubberized surfacing. Commonly referred to as “pour in place”, all 32 playgrounds in Newport Beach are equipped with the unitary surface to enhance safety and provide ADA accessibility to the play structure. Repairs to the surfacing are being made this month at Cliff Drive Park, Eastbluff Park and Channel Place Park.

Pictured: Maintenance Worker, Eric Foley; Recreation Supervisor Brason Alexander; Recreation Coordinator Amanda Mahaffey at Training



Pictured: Surfacing improvements at Cliff Drive Park



Another Successful Field Trip Season for Natural Resources

This year, Natural Resources staff ran 15 field trips at the Little Corona tide pools, educating more than 800 students, teachers, and chaperones about our Marine Protected Area. The field trips are offered year round at \$69 per class of 30 students, with February through June seeing the most field trips. Field trips are only offered on low tides during school hours, so a limited number of programs are possible annually. Many of our schools are repeat visitors, with some teachers coming for over ten years in a row! The field trip begins at Big Corona, where we discuss beach ecology, marine protected areas, and beach safety. We then walk students down the beach to Little Corona, where they explore the tide pools with our staff to see the amazing intertidal ecosystem we have right here in Newport Beach.



Pictured: Natural Resource Interpreter Gary Serbeniuk prepares students from Fountain Valley for their hike to the tide pools.

BUCK GULLY AND IRVINE RANCH CONSERVANCY VOLUNTEERS RECOGNIZED

Irvine Ranch Conservancy, the contracted land manager for Buck Gully open space, hosted their annual Volunteer and Partner Celebration Dinner on Friday May 17. Nestled against the hills of Limestone Canyon Regional Park, RSS staff enjoyed dinner and recognition of the programming, education, restoration and trail work done by over 600 volunteers in 400,000 acres of open space throughout Orange County, including Buck Gully.



Movie at Marina Park

A little wind didn't stop staff from pulling off a wonderful event. Who knew that the weather would be cold at end of May? Fortunately, this didn't stop families from attending the screening of Incredibles 2 at Marina Park on Friday, May 17. The community was truly appreciative and enjoyed some fun activities.

During the event, Lighthouse Café served hot chocolate and goodies. The kids were able to create/color their own super hero mask or bandana. There was also a raffle of Incredibles 2 DVDs that were generously donated by PB&R Commissioner Heather Ignatin.

A special Thank You to the whole Marina Park crew for planning a successful event along with the staff at Newport Coast for lending their expertise with the MIP equipment.



OASIS Activities

TNT Lecture: "The Hidden History of Orange County"

Presented by Chris Epting, author/journalist/tv host

Tuesday, June 4, 6pm, OASIS Event Center, FREE

Award winning journalist and author of 30 books on travel, history and pop culture, Chris Epting will tell little known stories about Orange County - From Elvis to Disney to Babe Ruth and beyond. It's a look at some weird, wonderful, off the beaten track landmarks throughout the OC, with lots of trivia and fun stories culled in part from the author's series of popular books on Orange County history (which will be available for signing at the event)

Behind the Classics: "12 Angry Men"

Wednesday, June 12, 2:30-5pm, Event Center, FREE

Presented by: Theo Siegel, writer, researcher and television professional

We will show the movie "12 Angry Men" in its entirety preceded by a 30-minute informative discussion about the film, its origins, script, casting, production, audience reaction, box office sales, and its legacy.

U.S. Constitutional Law-Preview Lecture

Thursday, June 27, 5pm, Room 1, FREE

Led by Joshua Stone, MPP

In this special preview lecture, Joshua Stone, MPP will give a teaser of his upcoming eight-week collegiate level course that explores United States Constitutional Law. The course will explore some of America's most significant legal and judicial challenges, and the resulting transformations that impact our world today. For information on the eight-week course that will follow this lecture, see our May newsletter.

Lecture: Hoag Medical Lecture: "Meditation for Health & Happiness"

Wednesday, June 5, 1-2pm, Room 2, FREE

Presented by: Ana Pimentel, RD, LCSW, Hoag Hospital

Mindfulness and meditation techniques have been shown to have great benefits for both our physical and emotional health. Stress and anxiety are often part of life and unescapable, but little moments of relaxation and awareness can give us an extra boost to better manage.

Come learn ways to implement meditation and mindfulness throughout your day to promote better health and more happiness!

Park Patrol

The following patrol checks/public contact numbers reflect the Park Patrol daily calls for service as well as issues discovered during normal patrol activities. Due to the timing of the meeting, these monthly summaries will be two months behind (i.e. in June you will receive April summary). During the month of **April 2019** Park Patrol had the following number of contacts:

1. PATROL CHECKS

- 222 with Youth Sports Groups
- 557 Field related issues/checks
- 36 Park/Picnic/reservation issues/checks
- 200 Community Center issues/checks
- 348 Playground checks
- 94 other

2. PUBLIC CONTACTS

- 242 Education
- 31 Alcohol
- 88 Dog related

Written Warnings Issued – 2 (for parking violations)

Citations Issued – 9 Total (for parking violations, dog off leash and alcohol and glass on beach)

Facility Use

During the period of March 16 – April 15, 2019 were:

- 33 Picnic/Park Area
- 10 Class Rooms
- 5 Fields
- 25 Gym
- 17 Civic Center Community Room
- 11 CYC Facility
- 15 Marina Park Picnic/Park Area
- 19 Marina Park Event Room
- 27 Marina Park Classrooms
- 21 NCCC Gym
- 40 NCCC Classrooms
- 147 OASIS Classrooms
- 47 OASIS Event Center

Special Event Permits (SEP)

Total SEP's processed as of May 15, 2019 - 11.

Those events of note for period March 16 – April 15, 2019 were:

- **NB Film Fest: April 25-May 2, 2019, Fashion Island/Lido Theater, Attendance: 2500**
- **OC Marathon: May 5, 2019, Fashion Island, Attendance: 10,000**



Newport Beach THINGS TO DO

RECREATION & SENIOR SERVICES DEPARTMENT

JUNE 2019

TUESDAY NIGHT TOPICS

Lecture Series Presents...



JUNE 4 | 6pm | OASIS SENIOR CENTER
The Hidden History of Orange County

Presented by
 Chris Epting,
 Author, Journalist
 & TV host

Award winning journalist and author of 30 books on travel, history and pop culture, Chris Epting will tell little known stories about Orange County. From Elvis to Disney to Babe Ruth and beyond. It's a look at some weird and wonderful, off the beaten track landmarks throughout OC, with lots of trivia and fun stories.

RSVP: OASIScenter@NewportBeachca.gov 949-644-3244



NEWPORT BEACH CITY ARTS COMMISSION PRESENTS

CONCERTS ON THE GREEN

FREE!

Sundays
 6-7:30 p.m.

- JUNE 16 THE SIDE DEAL
- JULY 7 SMITH
- AUG 25 QUEEN NATION
- SEPT 15 FLASHBACK HEART ATTACK

Bring blankets, beach chairs and a picnic dinner or purchase food from food trucks on site. NO ALCOHOL.



For more information: newportbeachca.gov/culturalarts
NEWPORT BEACH CIVIC CENTER
 100 Civic Center Drive, Newport Beach, CA

CITY OF NEWPORT BEACH • RECREATION & SENIOR SERVICES



Movie in the Park

FREE Popcorn FREE Candy FREE Activities FOOD FOR Purchase

Event starts at 7:00 p.m.

FRIDAY, JUNE 7

Ralph Breaks the Internet

Mariners Park

1300 Irvine Ave., Newport Beach, 92660

For more information, visit newportbeachca.gov/recreation or call 949-644-3151.

Parks Make Life Better!



NEWPORT BEACH ARTS COMMISSION PRESENTS



THE 55TH ANNUAL
NEWPORT BEACH ART EXHIBITION
SAT JUNE 15 • 1-6PM

Newport Beach Civic Center

Over 250 of works of art!
 Paintings, sculpture, mixed media and photography!

WINE • FOOD • MUSIC
 KID'S ART ACTIVITIES



Newport Beach 1/1 Marine Foundation

CARWASH FUNDRAISER

Marines from 1st Battalion/1st Marines will scrub your cars squeaky clean!

SATURDAYS

JUNE 22 • JULY 20 • AUGUST 17



Shell Gas Station

1600 Jamboree Road

Newport Beach (corner of San Joaquin Hills Rd.)



SUGGESTED DONATION: \$20
 Tax ID: 27-2756685

NEWPORT BEACH 1ST BATTALION 1ST MARINE FOUNDATIONS
 P.O. BOX 1216 NEWPORT BEACH, CA 92663
 p. 949-385-1110 e. info@oneonemarines.com
 w. www.oneonemarines.com



NEWPORT BEACH

PB&R Commission Staff Report

Agenda Item _____
June 4, 2019

TO: Parks, Beaches & Recreation Commission

FROM: Public Works Department / Municipal Operations Division
Micah Martin, Deputy Public Works Director, Municipal Operations
949 644-3055, mmartin@newportbeachca.gov

TITLE: Appeal of Denial for Tree Removal Request – 720 Jasmine Avenue

RECOMMENDATION:

Staff recommends that the PB&R Commission consider the appeal from John Buckingham (resident at 927 Gardenia Way) of staff's denial of the removal of a City Sugar Gum tree in front of 720 Jasmine Avenue.

DISCUSSION:

City Council Policy G-1, Retention, Removal, and Maintenance of City Trees, allows the PB&R Commission to act upon an appeal to remove Standard City trees. On July 12, 2018, property owner John Buckingham, resident at 927 Gardenia Way within the Jasmine Park Association, contacted the City to request the removal of a Sugar Gum tree in front of 720 Jasmine Avenue due to view encroachment and sidewalk damage.

The City Arborist inspected the tree on March 1, 2019 and determined the Gum tree is in healthy and stable condition and does not meet the criteria for removal referenced in the G-1 Policy. The City sidewalk is lifted likely due to the roots of the tree, which can be mitigated with root pruning/shaving and repair to the sidewalk, or the sidewalk could be ramped within ADA specifications to avoid any root pruning. Mr. Buckingham was informed and advised of the City Arborist's findings, and that he could appeal staff's decision to the PB&R Commission. Attached are the Tree Removal Review and Tree Inspection Report.

NOTICING:

John Buckingham, Council Member Joy Brenner, and Corona del Mar Village Community Association / Corona del Mar Residents Association have received a copy of this report. Additionally, surrounding property owners, map attached, were notified via postcard of the Commission Meeting related to this appeal of staff's denial of the removal request. The tree was posted with the attached poster regarding the removal request.

Attachments:

- A. Tree Removal Application
- B. Tree Removal Review and Tree Inspection Reports
- C. Map highlighting surrounding property owners notified of the Commission Meeting
- D. Postcard Notification
- E. Tree Poster



DAW

CITY OF NEWPORT BEACH Municipal Operations Department

Tree Removal or Reforestation Application

Per City Council Policy G-1 (Retention, Removal, and Maintenance of City Trees), I am requesting a tree removal(s) to be reviewed by staff and submitted to either the Parks, Beaches, and Recreation Commission for consideration at a future meeting or the appropriate City approving authority. I am aware that Commission meetings are regularly held on the first Tuesday of each month (except for holidays) at 6:00 p.m. in the Council Chambers.

1 LARGE TREE

Quantity and specie(s), (if known) of tree(s).

UNKNOWN

Location of tree(s)

CORNER OF JASMINE / 5th STREET, CORONA DEL MAR

Please be as specific as possible

Requestor

- Property Owner(s)
- Community Association
- Other

Address/ Phone (Daytime) / Email

927 GARDENIA WAY CDM, 92625
949-887-9203
JCBUCK16@AOL.COM

Signature:

Date:

7/12/18

Print Name:

JOHN BUCKINGHAM

REFORESTATION REQUESTS: Please proceed to Section B.

Section A. For Tree Removal Requests Only

Removal Criteria (Check one or more)

Please provide copies of photos, bills, documents or any other related material that will verify the checked items.

- Proven and repeated history of **damaging** public or *private, sewers, water mains, roadways, sidewalks, curbs, walls, fences, underground utilities or foundations. (*Greater than \$500)
- Repeated history of **significant interference** with street or sidewalk drainage.
- Dying Has no prospect of recovery.
- Diseased Cannot be cured by current arboricultural methods. In advanced state of decline with no prospect of recovery.
- Hazardous Defective, potential to fail, could cause damage to persons/property upon failure. Assessment by City Arborist will identify structural defects, parts likely to fail, targets-if fails, procedures and actions to abate.
- Beautification Project In conjunction with a City Council-approved City, commercial, neighborhood, or community association beautification program.

Section B. For Reforestation Requests Only

Reforestation is the concept of systematically replacing Problem or All Other Trees which are creating hardscape and/or view problems and cannot be properly trimmed, pruned or modified to alleviate the problem(s) they create, or those which have reached their full life, and are declining in health, or are simply the wrong species of tree(s) for the planted location.

As initiated by:

- Property Owner(S)
- Community Association
- Other _____

Check all items applicable:

- Tree(s) causing curb, gutter, sidewalk or underground utilities damage.
- Wrong tree species for location
- View encroachment
- Area has clearly defined contiguous boundaries that include the tree(s) proposed.
- Residential communities, neighborhoods, or business organizations who apply for reforestation must submit a petition signed by a minimum of 60% of the property owners within the area defined.
- Areas represented by a legally established community association, may submit a resolution of the Board of Directors formally requesting a reforestation.
- Individual property owners must submit a petition signed by a minimum of 60% of a maximum of 30 private property owners (up to 15 contiguous private properties on both sides of the street up to 500' in either direction from the location of the proposed reforestation site) as well as the endorsement of the appropriate homeowners' association, if applicable.

*A request for reforestation requires a written agreement submitted to the Parks, Beaches, and Recreation Commission by the petitioning sponsor (Individual private property owner(s) or group) to pay 100% of the costs of the removal and replacement of the public tree(s) in advance of any removal activity. The actual removal and replanting will be coordinated by the Municipal Operations Department using the City tree maintenance contractor.

*There shall be a minimum of a one-for-one replacement of all tree(s) removed in reforestation projects. Replacement tree(s) shall be a minimum size of 36" boxed tree and cost ranges from \$706 to \$910, unless the parkway space will not accommodate a 36" boxed tree or a tree cannot be planted due to planting restrictions contained in City Council Policy G-6.

This form does not replace the requirements of any of the City tree policies. Its use is intended to expedite the tree removal or reforestation requests and to ensure compliance with all City requirements. Please refer to individual City Council Policy G-1 for additional information.

REQUESTOR COMMENTS:

① View of (Crown All) CHALINA OBSTRUCTED !!

② - WALKWAY HAZARD DUE TO CURB DAMAGE BY ROOTS

③ - REQUEST AUGUST 7th AGENDA

Removals, except emergency, will be subject to the notification processes, time frames and authority as specified in the City Council G-1 Policy.



Public Works Department/Municipal Operations Division

TREE INSPECTION REPORT

Name: Landscape Division

Location(s) of tree(s): 720 Jasmine Avenue / Front 1

Request: A representative from the Jasmine Park Homeowners Association has requested the removal of a City Sugar Gum tree due to view encroachment and sidewalk damage.

Botanical/Common Names: Eucalyptus cladocalyx / Sugar Gum

Designated Street Tree: Appropriate tree selected from the City's Parkway Tree Designation List, Per City Council Policy G-6.

Estimated Trees Values: \$9,830.00

Damage: City sidewalk

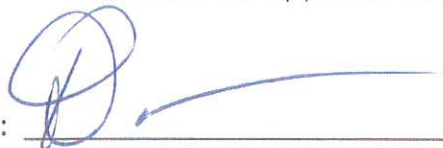
Parkway: Concrete Brick (X) Turf Other

Comments: A field inspection determined the Sugar Gum is in a healthy and stable condition and does not meet the criteria for removal referenced in the G-1 Policy. The City sidewalk is lifted likely due to the roots of the tree. The sidewalk lifting can, either be mitigated with root pruning/shaving and repair to the sidewalk, or the sidewalk could be ramped within ADA specifications to avoid any root pruning.

Inspected by: 
Kevin Pekar, City Arborist

Date: March 1, 2019

Recommendation: Staff is denying the removal request of the Sugar Gum tree and has advised the applicant of the reforestation and appeal processes.

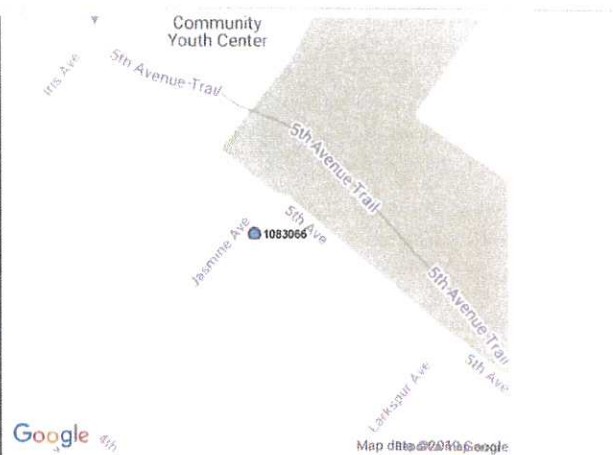
Reviewed by: 
Dan P. Sereno, Landscape Manager

Date: March 1, 2019

Detail Notes Images Documents Observations

Inventory Detail

Tree ID	1083066	Old Tag #		Save
District	12			
Area	12			
Address	720 JASMINE AVE			
Side/Site	Front - 1			
Alt Address				
Tree Species	Eucalyptus cladocalyx / Eucalyptus - Cladocalyx			
Common Name	Sugar Gum			
Size	25-30			
Height	45-60			
DBH				
Condition	FAIR			
Grow Space				
Space Size				
Overhead Utility				
Sidewalk Damage				
Note:				
Irrigation Flag	Yes			No
Monitor Flag	Yes			No
Service Type	Service Request			
Season	JAN/APR			
Estimated Value	\$9,830.00			
Next Date				



Google

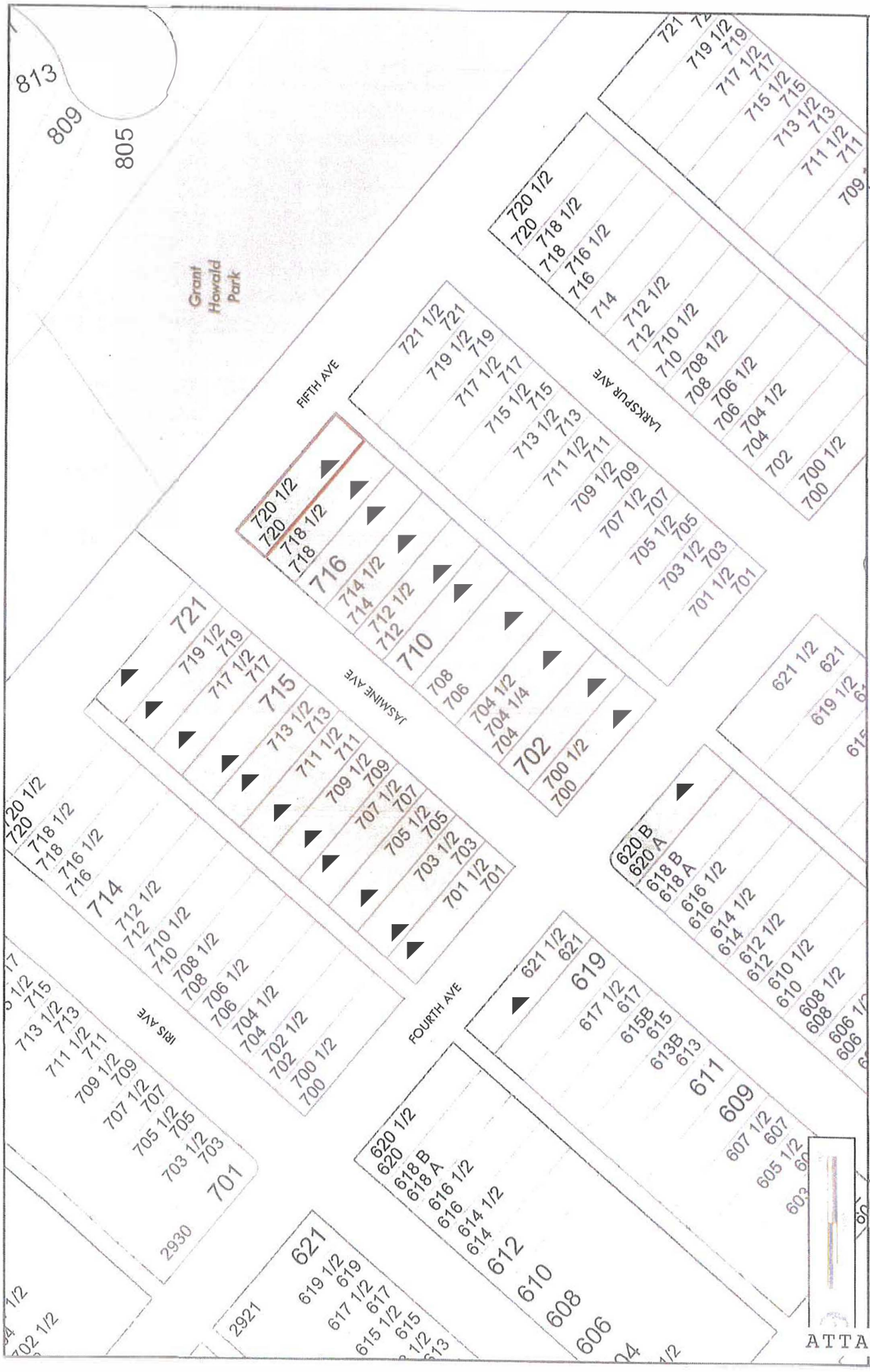
Map data © 2016 Google

Latitude: 33.600666493 Longitude: -117.869063083 [\[edit\]](#)

Service History							Now
Scope	WO Ref #	Description	Who	Service Date	Invoice Date	Service	Price
Invoiced	35814	2019 - SR at 720 JASMINE AVE (Eucalyptus)	GSTS	2/13/19	2/13/19	Service Request	63.48
Invoiced	32572	2018 - Grid 12 (Corona del Mar) - Broadleafs (March Progress)	GSTS	3/20/18	3/29/18	Grid Pruning	51.33
Invoiced	28852	2017 - WR41544 - SR at JASMINE AV	GSTS	4/26/17	4/26/17	Service Request	60.58
Invoiced	24443	2016 - Grid 12 (CDM) - Broadleafs	GSTS	3/10/16	3/29/16	Grid Pruning	49.43
Invoiced	21108	2015 - Grid 12 - Corona Del Mar (Palms, Ficus, and Eucs)	GSTS	4/02/15	4/17/15	Grid Pruning	48.00
Invoiced	18318	2014 - Grid 12 (CDM) - Revised	GSTS	5/19/14	5/30/14	Grid Pruning	48.00
Work History			WCA		7/22/11	Other	0.00
Work History			WCA		10/28/10	Other	0.00
Work History			WCA		12/29/09	Other	0.00
Work History			WCA		3/11/09	Other	0.00
Work History			WCA		9/28/07	Other	0.00
Work History			WCA		2/16/06	Other	0.00
Work History			WCA		7/14/04	Other	0.00
Work History			WCA		1/23/03	Other	0.00
Work History			WCA		7/14/99	Other	0.00



720 Jasmine Avenue



720 Jasmine Ave

Notified Properties

720 Jasmine



**IMPORTANT:
Commission Meeting Notice**

City of Newport Beach
Public Works Department | Municipal Operations Division
100 Civic Center Drive
Newport Beach, CA 92660



**Parks, Beaches, and Recreation Commission
Meeting Notice**

At its June 4, 2019 meeting, the Parks, Beaches, and Recreation Commission will consider the appeal of denial for a tree removal request in front of 720 Jasmine Avenue.

Attendance at the meeting is optional.

DATE: Tuesday, June 4, 2019
TIME: 6:00 p.m.
LOCATION: City Council Chambers
Newport Beach Civic Center
100 Civic Center Drive
Newport Beach, CA 92660

The Agenda Report will be available on the City's website after May 31, 2019: www.newportbeachca.gov. If you have any questions regarding this item, you may contact the Public Works Department, Municipal Operations Division at (949) 644-3055.

CITY OF NEWPORT BEACH

**THE PARKS, BEACHES AND RECREATION COMMISSION
WILL CONSIDER AN APPEAL OF DENIAL OF A TREE
REMOVAL/REFORESTATION REQUEST**



**AT THE June 4, 2019 (6:00PM) MEETING
AT THE CIVIC CENTER
COUNCIL CHAMBERS
100 CIVIC CENTER DRIVE
NEWPORT BEACH CA 92660**

**FOR ANY QUESTIONS PLEASE CALL
PUBLIC WORKS DEPARTMENT
MUNICIPAL OPERATIONS DIVISION
AT (949) 644-3055**

CITY OF NEWPORT BEACH

**THE PARKS, BEACHES AND RECREATION COMMISSION
WILL CONSIDER AN APPEAL OF DENIAL OF A TREE
REMOVAL/REFORESTATION REQUEST**



**AT THE June 4, 2019 (6:00PM) MEETING
AT THE CIVIC CENTER
COUNCIL CHAMBERS
100 CIVIC CENTER DRIVE
NEWPORT BEACH CA 92660**

**FOR ANY QUESTIONS PLEASE CALL
PUBLIC WORKS DEPARTMENT
MUNICIPAL OPERATIONS DIVISION
AT (949) 644-3055**



== CITY OF ==

NEWPORT BEACH

PB&R Commission Staff Report

Agenda Item _____
June 4, 2019

TO: Parks, Beaches & Recreation Commission

FROM: Public Works Department / Municipal Operations Division
Micah Martin, Deputy Public Works Director, Municipal Operations
949 644-3055, mmartin@newportbeachca.gov

TITLE: Proposed Revisions to City Council Policy G-6, Maintenance and Planting of Parkway Trees Exhibits

RECOMMENDATION:

Staff recommends that PB&R Commission review the proposed City Council Policy G-6 Exhibits, which include revisions to the Parkway Tree Designation List, and the additions from the Eastbluff Homeowners Community Association to the Street Tree Designation List, for City Council review and approval.

DISCUSSION:

The City Council adopted an official street tree list, the Street Tree Designation List, which will be used by the Municipal Operations to determine species for replacement of trees removed from established parkways and for planning purposes in all new subdivisions and commercial developments. A second list, the Parkway Tree Designation List, has been added as a species palette for residents to choose approved, new and replacement, trees based on the size of parkway available for planting. The Municipal Operations Deputy Director will have the authority to add species to the Street and Parkway Tree Designation Lists, which will be updated on an annual basis by the Municipal Operations staff and reviewed by the Parks, Beaches and Recreation Commission for approval before adoption by the City Council.

NOTICING:

The agenda item has been noticed according to the Brown Act.

Attachments:

- A. Current City Council Policy G-6, and Exhibits
- B. Proposed City Council Policy G-6 Exhibits
- C. Eastbluff Homeowners Community Association – Proposed Street Tree Designation List

MAINTENANCE AND PLANTING OF PARKWAY TREES

The City Council is vitally interested in beautification of City parkways. Public cooperation in helping to develop and maintain healthy and attractive parkway trees is encouraged.

I. MAINTENANCE OF PARKWAY TREES

The Municipal Operations Department will trim the parkway trees on a rotation schedule. An effort will be made to trim the parkway trees on less than a three-year cycle. If the rotation trimming is completed in less than three years, more frequent trimming will be performed on certain trees and in view areas. Public safety issues such as low branches and heavy foliage will be given priority over view trimming. An effort will be made to trim parkway trees located in heavy summer traffic areas during the fall and winter months. Annual trimming of certain species of trees prone to wind damage will be done prior to the winter season.

II. TREE DESIGNATION LISTS

The City Council has adopted an official street tree list, the Street Tree Designation List, which will be used by the Municipal Operations Department to determine species for replacement of trees removed from established parkways and for planning purposes in all new subdivisions and commercial developments. A second list, the Parkway Tree Designation List, has been added as a species palette for residents to choose approved, new and replacement, trees based on the size of parkway available for planting.

The Municipal Operations Director will have the authority to add species to the Street and Parkway Tree Designation Lists, which will be updated on an annual basis by the Municipal Operations Department staff and reviewed by the Parks, Beaches and Recreation Commission ("Commission") for approval before adoption by the City Council.

III. STANDARDS AND SPECIFICATIONS FOR PLANTING PARKWAY TREES

General Requirements

1. 72-hour notification shall be given to the Municipal Operations Department staff prior to the initial installation of parkway trees for approval of species, material quality, and planting supervision. 24-hour notice shall be given prior to all subsequent inspections as required.

2. Position of parkway trees is subject to approval by the Municipal Operations Department, and any tree not properly placed will be relocated at no cost to the City. In the interest of public safety, trees shall be planted not less than:
 - 15 feet back of beginning of curb returns at intersections.
 - 10 feet from lamp standards.
 - 10 feet from fire hydrants.
 - 5 feet from service walks or driveways.
 - 10 feet from meters and sewers.
 - 25 feet from stop signs.

3. Trees shall be a minimum container size of 36" size box.
 - Condition: Plants shall be symmetrical, typical for variety and species, healthy, vigorous, free from plant disease, insect pests and shall have healthy, normal root system free from being root bound. Trees shall not be pruned nor topped prior to delivery.
 - Inspection: All plant material shall be subject to inspection and approval by the Municipal Operations Department staff prior to planting. The City has the right to reject any item offered in its sole and absolute discretion.
 - Parkway Tree Planting: Per City Standards as found in the Tree Planting Detail available on the City's website.

IV. GUARANTEES

1. 36" boxed trees shall be guaranteed as to growth and health for a period of one year after final acceptance by the Municipal Operations Department staff.
2. Trees that fail to grow or are injured or damaged during planting operations shall be replaced within 15 days after notification. Replacement material shall be guaranteed to be specified as original guaranteed material.

V. ESTABLISHED PARKWAYS

1. For all City Trees in established parkways, adjacent property owners and/or applicants must:
 - Choose from the species listed on the Street Tree Designation List where it applies, or from the Parkway Tree Designation List for all other areas for planting new and replacement trees.

- Accept responsibility for watering and fertilizing new trees.
- Contact the City Arborist by sending a written request for one or more parkway trees or questions regarding this Policy to: Attn: City Arborist, P. O. Box 1768, Newport Beach, California 92659-1768.

2. The City will:

- Approve species, location, and spacing of tree planting.
- Furnish, install, stake, and initially fertilize new trees (exception would be trees planted in accordance with City Code 13.09.010).
- Prune and spray tree as required.
- Approve type of root barriers for installation.
- Assume trimming responsibilities.

VI. PARKWAYS IN ESTABLISHED RETAIL COMMERCIAL/OFFICE CENTERS

Parkway street trees that are removed because they are diseased or have damaged property may be replaced with the same species of trees (or a species other than the designated street tree) provided (a) the parkway street tree is located adjacent to or within an established retail commercial/office development; (b) replacement with the same species will maintain the appearance of the streetscape and/or ensure consistency with an established landscape master plan adopted by the adjoining landowner; (c) the parkway street trees have a history of little or no hardscape damage nor injury claims related to hardscape damage caused by the tree; and (d) the property owner has agreed in writing to repair or pay the cost of repair/and or replacement of hardscape or underground utilities damaged by the new trees.

[Attachment - Exhibit A]

[Attachment - Exhibit B]

History

Adopted I-19 - 11-22-1982

Amended I-19 - 11-14-1983

Amended I-19 - 10-22-1990

Amended I-19 - 10-22-1992

Amended I-19 - 1-24-1994 (changed to G-6)

Amended G-6 - 7-23-2002

Amended G-6 - 4-13-2004

Amended G-6 - 8-24- 2004

Amended G-6 - 9-8-2015

Amended G-6 - 8-8-2017

Exhibit A
Tree Designation List

G-6

STREET	ID	HOA	FROM	TO	BOTANICAL NAME	COMMON NAME
ANACAPA DR		Fashion Island	1300	1300	<i>Ficus rubiginosa</i>	1. Rusty Leaf Fig
BALBOA BLVD E			600	2100	<i>Syagrus romanzoffiana</i>	1. Queen Palm
BALBOA BLVD W			1000	1500	<i>Arbutus unedo</i> <i>Cassia leptophylla</i> <i>Washingtonia robusta</i>	1. Strawberry Tree 2. Gold Medallion Tree 3. Mexican Fan Palm
BALBOA BLVD W	Median		1000	3200	<i>Washingtonia robusta</i>	1. Mexican Fan Palm
BLUE KEY		Harbor View Hills South	3600	3734	<i>Magnolia grandiflora 'Little Gem'</i>	1. Magnolia, Little Gem
BLUE WATER DR		Broadmoor	2501	2825	<i>Magnolia grandiflora 'St Mary'</i>	1. Magnolia, St. Mary's
BOMBERO ST		Fashion Island	800	800	<i>Ficus rubiginosa</i>	1. Rusty Leaf Fig
BRIGHTON RD		Cameo Shores	4501	4651	<i>Bauhinia variegata</i>	1. Purple Orchid
BUCK GULLY DR		Harbor View Hills South	4000	4001	<i>Magnolia grandiflora 'Little Gem'</i>	1. Magnolia, Little Gem
CAMDEN DR	Parkway	Cameo Shores	4501	4699	<i>Bauhinia variegata</i>	1. Purple Orchid
CAMDEN DR	Slope	Cameo Shores	4500	4599	<i>Bauhinia variegata</i>	1. Purple Orchid
CAMEO HIGHLANDS DR		Cameo Highlands	500	735	<i>Bauhinia variegata</i>	1. Purple Orchid
CAMEO SHORES RD	Parkway	Cameo Shores	101	346	<i>Bauhinia variegata</i>	1. Purple Orchid
CAMEO SHORES RD	Slope	Cameo Shores	100	350	<i>Bauhinia variegata</i>	1. Purple Orchid
CATAMARAN DR		Harbor View Hills South	3400	3630	<i>Magnolia grandiflora 'Little Gem'</i>	1. Magnolia, Little Gem
COAST HWY E			1600	1600	1. <i>Bauhinia blakeana</i> 2. <i>Archontophoenix cunninghamiana</i>	1. Hong Kong Orchid 2. King Palm

Exhibit A
Tree Designation List

G-6

COAST HWY E	Median		2200	3934	1. <i>Bauhinia blakeana</i> 2. <i>Archontophoenix cunningghamiana</i>	1. Hong Kong Orchid 2. King Palm
COAST HWY E			4001	4401	1. <i>Bauhinia blakeana</i> 2. <i>Archontophoenix cunningghamiana</i>	1. Hong Kong Orchid 2. King Palm
COAST HWY E			4104	4400	1. <i>Bauhinia blakeana</i> 2. <i>Archontophoenix cunningghamiana</i>	1. Hong Kong Orchid 2. King Palm
COAST HWY E	Median		300	2100	1. <i>Spathodea campanulata</i> 2. <i>Archontophoenix cunningghamiana</i>	1. African Tulip Tree 2. King Palm
CORTLAND DR		Cameo Highlands	4500	4839	<i>Bauhinia variegata</i>	1. Purple Orchid
CROWN DR	Even	Harbor View Hills	2720	2740	<i>Magnolia grandiflora</i> 'Little Gem'	1. Magnolia, Little Gem
CROWN DR	Parkway	Harbor View Hills	2501	2735	<i>Magnolia grandiflora</i> 'Little Gem'	1. Magnolia, Little Gem
DE ANZA DR					<i>Magnolia grandiflora</i> 'cultivar'	
DORCHESTER RD		Cameo Highlands	4500	4833	<i>Bauhinia variegata</i>	1. Purple Orchid
EBBTIDE RD	Even	Harbor View Hills	2700	2700	<i>Magnolia grandiflora</i> 'Little Gem'	1. Magnolia, Little Gem
EBBTIDE RD	Parkway	Harbor View Hills	1100	2915	<i>Magnolia grandiflora</i> 'Little Gem'	1. Magnolia, Little Gem
EVENING CANYON RD			301	365	<i>Erythrina caffra</i>	1. Coral Tree
FAIRFIELD DR	Parkway	Cameo Shores	4501	4645	<i>Bauhinia variegata</i>	1. Purple Orchid
FAIRFIELD DR	Slope	Cameo Shores	4500	4500	<i>Bauhinia variegata</i>	1. Purple Orchid

Exhibit A
Tree Designation List

G-6

FARALLON DR		Fashion Island	1900	2101	<i>Ficus rubiginosa</i>	1. Rusty Leaf Fig
GARRETT DR	Parkway	Cameo Highlands	501	725	<i>Bauhinia variegata</i>	1. Purple Orchid
GARRETT DR	Slope	Cameo Highlands	500	500	<i>Bauhinia variegata</i>	1. Purple Orchid
GOLDENROD AVE			200	721	<i>Washingtonia robusta</i>	1. Mexican Fan Palm
GOLDENROD AVE		Harbor View Hills	900	1133	<i>Magnolia grandiflora</i> 'Little Gem'	1. Magnolia, Little Gem
HAMPDEN RD	Even	Cameo Shores	4500	4700	<i>Bauhinia variegata</i>	1. Purple Orchid
HAMPDEN RD	Parkway	Cameo Shores	4501	4717	<i>Bauhinia variegata</i>	1. Purple Orchid
HARBOR VIEW DR	Parkway	Harbor View Hills	2500	3007	<i>Magnolia grandiflora</i> 'Little Gem'	1. Magnolia, Little Gem
HARBOR VIEW DR	Slope	Harbor View Hills	2800	3101	<i>Magnolia grandiflora</i> 'Little Gem'	1. Magnolia, Little Gem
HELIOTROPE AVE *7			200	721	1. <i>Magnolia grandiflora</i> 'Little Gem' 2. <i>Howea Fosteriana</i>	1. Magnolia, Little Gem 2. Kentia Palm
HERON WAY		Harbor View Hills South	1300	1325	<i>Magnolia grandiflora</i> 'Little Gem'	1. Magnolia, Little Gem
INLET ISLE DR		Harbor View Hills South	3701	4012	<i>Magnolia grandiflora</i> 'Little Gem'	1. Magnolia, Little Gem
IRVINE AVE	Median				1. <i>Phoenix dactylifera</i> 2. <i>Spathodea campanulata</i>	1. Date palm 2. African tulip
ISLAND VIEW DR		Broadmoor	2501	2727	1. <i>Magnolia, Little flora</i> 'Little Gem' 2. <i>Howea Fosteriana</i>	1. Magnolia, St.flora 'Little Gem' 2. <i>Howea Fosteriana</i>
JAMBOREE RD			500	600	1. <i>Tabebuia avellanedae</i> 2. <i>Liquidambar styraciflua</i> 'Rotundiloba'	1. Lavendar Trumpet

Exhibit A
Tree Designation List

G-6

								2. Roundleaf Sweet Gum
JAMBOREE RD	Median		800	900			1. <i>Tabebuia avellanedae</i> 2. <i>Liquidambar styraciflua</i> 'Rotundiloba'	1. Lavendar Trumpet 2. Roundleaf Sweet Gum
JAMBOREE RD	Median		1100	1500			1. <i>Tabebuia avellanedae</i> 2. <i>Liquidambar styraciflua</i> 'Rotundiloba'	1. Lavendar Trumpet 2. Roundleaf Sweet Gum
KEEL DR		Harbor View Hills South	1200	1537			<i>Magnolia grandiflora</i> 'Little Gem'	1. Magnolia, Little Gem
KEY BAY		Harbor View Hills South	3800	3930			<i>Magnolia grandiflora</i> 'Little Gem'	1. Magnolia, Little Gem
KEY VIEW		Harbor View Hills South	1436	1456			<i>Magnolia grandiflora</i> 'Little Gem'	1. Magnolia, Little Gem
KEY WEST		Harbor View Hills South	1200	1224			<i>Magnolia grandiflora</i> 'Little Gem'	1. Magnolia, Little Gem
LIGHTHOUSE LN		Broadmoor	2500	2828			<i>Magnolia grandiflora</i> 'St Mary'	1. Magnolia, St. Mary's
MACARTHUR BLVD							1. <i>Magnolia grandiflora</i> 'Little Gem' 2. <i>Liquidambar styraciflua</i> 'Rotundiloba'	1. Magnolia, Little Gem 2. Roundleaf Sweet Gum
MARGUERITE AVE			200	721			<i>Archontopoenix cunninghamiana</i>	1. King Palm
MARGUERITE AVE			1600	1740			<i>Archontopoenix cunninghamiana</i>	1. King Palm
MARGUERITE AVE	Even		1520	1520			<i>Archontopoenix cunninghamiana</i>	1. King Palm

Exhibit A
Tree Designation List

G-6

MILFORD DR	Cameo Shores	101	345	<i>Bauhinia variegata</i>	1. Purple Orchid
MORNING CANYON RD		318	342	<i>Erythrina caffra</i>	1. Coral Tree
NEWPORT BLVD		100	600	1. <i>Tipuana tipu</i> 2. <i>Tristania laurina</i> 3. <i>Washingtonia robusta</i>	1. Tipu 2. <i>Tristania Laurina</i> 3. Mexican Fan Palm
NEWPORT BLVD		2600	3300	1. <i>Tipuana tipu</i> 2. <i>Tristania laurina</i> 3. <i>Washingtonia robusta</i>	1. Tipu 2. <i>Tristania Laurina</i> 3. Mexican Fan Palm
NEWPORT CENTER DR		100	900	<i>Washingtonia robusta</i>	1. Mexican Fan Palm
NEWPORT CENTER DR		1000	1200	<i>Washingtonia robusta</i>	1. Mexican Fan Palm
NEWPORT CENTER DR	Median	100	900	<i>Washingtonia robusta</i>	1. Mexican Fan Palm
NEWPORT CENTER DR	Median	1000	1200	<i>Washingtonia robusta</i>	1. Mexican Fan Palm
ORRINGTON RD	Parkway	4500	4645	<i>Bauhinia variegata</i>	1. Purple Orchid
ORRINGTON RD	Slope	4510	4510	<i>Bauhinia variegata</i>	1. Purple Orchid
OUTRIGGER DR		1200	1430	<i>Magnolia grandiflora 'Little Gem'</i>	1. Magnolia, Little Gem
PARK GREEN DR		3601	3907	<i>Magnolia grandiflora 'Little Gem'</i>	1. Magnolia, Little Gem
PEARL AVE		100	132	<i>Magnolia grandiflora 'Little Gem'</i>	1. Little Gem Magnolia
PEBBLE DR	Parkway	2700	2921	<i>Magnolia grandiflora 'Little Gem'</i>	1. Magnolia, Little Gem
PEBBLE DR	Slope	2800	2800	<i>Magnolia grandiflora 'Little Gem'</i>	1. Magnolia, Little Gem
PERHAM RD	Parkway	4501	4645	<i>Bauhinia variegata</i>	1. Purple Orchid

Exhibit A
Tree Designation List

G-6

PERHAM RD	Slope	Cameo Shores	4500	4500	<i>Bauhinia variegata</i>	1. Purple Orchid
POPPY AVE			200	352	<i>Tristania laurina</i> <i>Spathodea campanulata</i>	1. Water Gum 2. African Tulip Tree
QUIET COVE			3400	3449	<i>Geijera parviflora</i>	1. Australian Willow
ROCKFORD PL		Cameo Highlands	500	521	<i>Bauhinia variegata</i>	1. Purple Orchid
ROCKFORD RD		Cameo Highlands	500	721	<i>Bauhinia variegata</i>	1. Purple Orchid
ROXBURY RD		Cameo Shores	4500	4646	<i>Bauhinia variegata</i>	1. Purple Orchid
SALT AIR CIR		Broadmoor	2501	2601	<i>Magnolia grandiflora</i> 'St Mary'	1. Magnolia, St. Mary's
SALT AIR DR	Odd	Broadmoor	1301	1301	<i>Magnolia grandiflora</i> 'St Mary'	1. Magnolia, St. Mary's
SALT AIR DR	Slope	Broadmoor	1300	1320	<i>Magnolia grandiflora</i> 'St Mary'	1. Magnolia, St. Mary's
SAN CLEMENTE DR		Fashion Island	850	901	<i>Ficus rubiginosa</i>	1. Rusty Leaf Fig
SAN MIGUEL DR		Fashion Island	300	366	<i>Ficus rubiginosa</i>	1. Rusty Leaf Fig
SAN MIGUEL DR		Fashion Island	1600	2601	<i>Ficus rubiginosa</i>	1. Rusty Leaf Fig
SAN NICOLAS DR		Fashion Island	500	567	<i>Ficus rubiginosa</i>	1. Rusty Leaf Fig
SAND KEY		Harbor View Hills South	1200	1235	<i>Magnolia grandiflora</i> 'Little Gem'	1. Magnolia, Little Gem
SANDCASTLE DR		Harbor View Hills South	850	1555	<i>Magnolia grandiflora</i> 'Little Gem'	1. Magnolia, Little Gem
SANDPIPER DR	Parkway	Harbor View Hills	1010	1106	<i>Magnolia grandiflora</i> 'Little Gem'	1. Magnolia, Little Gem
SANDPIPER DR	Slope	Harbor View Hills	1015	1101	<i>Magnolia grandiflora</i> 'Little Gem'	1. Magnolia, Little Gem

Exhibit A
Tree Designation List

G-6

SANDUNE LN	Harbor View Hills South	3800	3930	<i>Magnolia grandiflora</i> 'Little Gem'	1. Magnolia, Little Gem
SANTA BARBARA DR	Fashion Island	870	1001	<i>Ficus rubiginosa</i>	1. Rusty Leaf Fig
SANTA CRUZ DR	Fashion Island	800	901	<i>Ficus rubiginosa</i>	1. Rusty Leaf Fig
SANTA MARIA RD	Fashion Island			<i>Ficus rubiginosa</i>	1. Rusty Leaf Fig
SANTA ROSA DR	Fashion Island	1500	1501	<i>Ficus rubiginosa</i>	1. Rusty Leaf Fig
SAUSALITO DR	Harbor View Hills South	3400	3621	<i>Magnolia grandiflora</i> 'Little Gem'	1. Magnolia, Little Gem
SEA LN	Harbor View Hills	900	950	<i>Magnolia grandiflora</i> 'Little Gem'	1. Magnolia, Little Gem
SEABREEZE LN	Harbor View Hills South	3400	3631	<i>Magnolia grandiflora</i> 'Little Gem'	1. Magnolia, Little Gem
SEACREST DR	Harbor View Hills South	1200	1533	<i>Magnolia grandiflora</i> 'Little Gem'	1. Magnolia, Little Gem
SETTING SUN DR	Harbor View Hills	2701	3007	<i>Magnolia grandiflora</i> 'Little Gem'	1. Magnolia, Little Gem
SETTING SUN DR	Harbor View Hills	2700	3000	<i>Magnolia grandiflora</i> 'Little Gem'	1. Magnolia, Little Gem
SURFVIEW LN	Harbor View Hills South	3500	3620	<i>Magnolia grandiflora</i> 'Little Gem'	1. Magnolia, Little Gem
SURREY DR	Cameo Highlands	4500	4824	<i>Bauhinia variegata</i>	1. Purple Orchid
TILLER WAY	Harbor View Hills South	900	1039	<i>Magnolia grandiflora</i> 'Little Gem'	1. Magnolia, Little Gem
TOPSIDE LN	Harbor View Hills South	3798	4015	<i>Magnolia grandiflora</i> 'Little Gem'	1. Magnolia, Little Gem
TREMONT LN	Cameo Shores	4500	4600	<i>Bauhinia variegata</i>	1. Purple Orchid
WATERFRONT DR	Slope	2200	2220	<i>Schinus Molle</i>	California Pepper

Exhibit A
Tree Designation List

G-6

WAYNE RD	Cameo Highlands	4500	4621	<i>Bauhinia variegata</i>	1. Purple Orchid
WHITE SAILS WAY	Harbor View Hills	1000	1133	<i>Magnolia grandiflora</i> 'Little Gem'	1. Magnolia, Little Gem

City of Newport Beach Parkway Tree Designation List										
Pkw y Size	Botanical Name	Common Name	Height	Spread	Type	Water Needs *	24" Avail	36" Avail	48" Avail	Notes
2'+	Archontophoeni x cunninghamian a	King Palm	40	20	Evergreen	M	Yes	Yes	Yes	
2'+	Chionanthus retusus X	Chinese Fringe Tree	20	15	Deciduous	M	Yes	Yes	No	
2'+	Heteromeles arbutifolia	California Holly	20	15	Evergreen	L	No	No	No	Available -15 Gal
2'+	Photinia X fraseri	Fraser Photinia	20	10	Evergreen	M	Yes	Yes	No	
2'+	Prunus cerasifera 'Newport'	Newport Plum	15	10	Deciduous		Yes	No	No	
2'+	Prunus cerasifera 'Purple Pony'	Dwarf Purple Leafed Plum	15	10	Deciduous		Yes	No	No	
2+	Raphiolepis "Majestic Beauty"	Indian Hawthorne	15	10	Evergreen	M	Yes	Yes	No	
2'+	Tabebuia chrysostricha	Yellow Trumpet Tree	25	20	Deciduous	M	Yes	No	No	
2'+	Trachycarpus fortunei	Windmill Palm	30	10	Evergreen	M	Yes	Yes	Yes	

City of Newport Beach Parkway Tree Designation List										
Pkw y Size	Botanical Name	Common Name	Height	Spread	Type	Water Needs *	24" Avail	36" Avail	48" Avail	Notes
2'+	<i>Tristania laurina</i> (<i>Tristaniopsis laurina</i>)	Water Gum	20	10	Evergreen	M	Yes	Yes	No	
3'+	<i>Betula pendula</i>	European White Birch	40	25	Deciduous	H	Yes	Yes	Yes	
3'+	<i>Brahea armata</i>	Mexican Blue Palm	30	15	Evergreen	L	Yes	No	No	
3'+	<i>Brahea edulis</i>	Guadalupe Palm	30	10	Evergreen	L	No	Yes	No	
3'+	<i>Cercis canadensis</i> 'Forest Pansy'	Forest Pansy Redbud	15	10	Deciduous	M	Yes	Yes	No	
3'+	<i>Cercis occidentalis</i>	Western Redbud	15	10	Deciduous	L	Yes	Yes	No	
3'+	<i>Chitalpa tashkentensis</i>	Chitalpa	25	25	Deciduous	L	Yes	Yes	No	
3'+	<i>Eryobotrya deflexa</i> no fruit	Bronze Loquat	25	25	Evergreen	M	Yes	Yes	No	
3'+	<i>Heteromeles arbutifolia</i>	Toyon Tree	15	10	Evergreen	L	No	No	No	Available -15 Gal
3'+	<i>Howea forsterana</i>	Kentia Palm	35	20	Evergreen	M	Yes	Yes	No	

City of Newport Beach Parkway Tree Designation List										
Pkw y Size	Botanical Name	Common Name	Height	Spread	Type	Water Needs *	24" Avail	36" Avail	48" Avail	Notes
3'+	Hymenoporum flavum	Sweetshad e	40	20	Evergree n	M	No	No	No	Available -15 Gal
3'+	Ilex altaclarensis 'Wilsonii' X	Wilson Holly	20	15	Evergree n	M	Yes	No	No	
3'+	Lagerstroemia indica 'Indian Tribes'	Crape Myrtle	25	20	Deciduou s	M	Yes	Yes	Yes	
3'+	Livistona chinensis	Chinese Fountain Palm	20	10	Evergree n	M	Yes	No	No	
3'+	Magnolia grandiflora 'Little Gem'	Little Gem Magnolia	20	15	Evergree n	M	Yes	Yes	Yes	
3'+	Maytenus boaria	Mayten Tree	20	15	Evergree n	M	Yes	Yes	Yes	
3'+	Rhus integrifolia	Lemonade Berry	10	10	Evergree n	VL	No	No	No	Available -15 Gal
3'+	Rhus lancea	African Sumac	25	20	Evergree n	L	Yes	No	No	
3'+	Syagrus romanzoffiana	Queen Palm	50	20	Evergree n	M	Yes	Yes	Yes	
3'+	Washingtonia robusta	Mexican Fan Palm	90	20	Evergree n	L	Yes	Yes	No	

City of Newport Beach Parkway Tree Designation List										
Pkw y Size	Botanical Name	Common Name	Height	Spread	Type	Water Needs *	24" Avail	36" Avail	48" Avail	Notes
4'+	Arbutus unedo	Strawberry Tree	20	20	Evergreen	L	Yes	Yes	Yes	
4'+	Brachychiton populeneus	Bottle tree	50	40	Evergreen	L	Yes	Yes	No	
4'+	Callistemon citrinus	Lemon Bottlebrush	25	20	Evergreen	L	Yes	Yes	No	
4'+	Callistemon viminalis	Weeping Bottlebrush	25	20	Evergreen	M	Yes	Yes	No	
4'+	Cassia leptophylla	Gold Medallion tree	25	20	Evergreen	M	Yes	Yes	No	
4'+	Eucalyptus ficifolia	Red Flowering Gum	40	40	Evergreen	M	Yes	No	No	
4'+	Geijera parvifolia	Australian Willow	40	25	Evergreen	L	Yes	Yes	Yes	
4'+	Laurus nobilis	Grecian Laurel	40	30	Evergreen	L	Yes	Yes	Yes	
4'+	Spathodea campanulata	African Tulip Tree	30	20	Evergreen	M	Yes	Yes	No	
4'+	Stenocarpus sinuatus	Firewheel Tree	25	15	Evergreen	M	Yes	No	No	

City of Newport Beach Parkway Tree Designation List										
Pkw y Size	Botanical Name	Common Name	Height	Spread	Type	Water Needs *	24" Avail	36" Avail	48" Avail	Notes
5'+	Agonis flexuosa	Peppermint Tree	35	35	Evergreen	L	Yes	No	Yes	
5'+	Albizia julibrissin	Silk Tree	40	40	Deciduous	M	Yes	Yes	No	
5'+	Bauhinia variegata (purpurea)	Purple Orchid Tree	30	20	Deciduous	M	Yes	Yes	No	
5'+	Brachychiton acerfolius	Flame Tree	40	30	Evergreen	L	Yes	Yes	No	
5'+	Calodendron capense	Cape Chestnut	40	40	Deciduous	M	Yes	No	No	
5'+	Erythrina americana (E. coralloides)	Naked Coral Tree	30	30	Deciduous	L	Yes	Yes	No	
5'+	Eucalyptus sideroxyylon	Red or Pink Ironbark	60	40	Evergreen	L	Yes	No	No	
5'+	Fraxinus oxycarpa 'Raywood'	Raywood Ash	35	30	Deciduous	M	Yes	Yes	Yes	
5'+	Ginkgo biloba 'Fruitless'	Maidenhair Tree	60	40	Deciduous	M	Yes	Yes	Yes	
5'+	Jacaranda mimosifolia	Jacaranda	40	50	Deciduous	M	Yes	Yes	Yes	
5'+	Koelreuteria paniculata	Goldenrain Tree	25	25	Deciduous	L	Yes	Yes	Yes	

City of Newport Beach Parkway Tree Designation List										
Pkw y Size	Botanical Name	Common Name	Height	Spread	Type	Water Needs *	24" Avail	36" Avail	48" Avail	Notes
5'+	Lyonothamnus floribundus	Catalina Ironwood	50	30	Evergreen	VL	Yes	No	No	
5'+	Magnolia grandiflora 'Russett'	Russett Magnolia	20	15	Evergreen	M	Yes	Yes	Yes	
5'+	Magnolia grandiflora 'Saint Mary'	Saint Mary Magnolia	25	20	Evergreen	M	Yes	Yes	Yes	
5'+	Magnolia grandiflora 'Samuel Sommer'	Samuel Sommer Magnolia	40	30	Evergreen	M	Yes	Yes	Yes	
5'+	Magnolia grandiflora. 'Majestic Beauty'	Majestic Beauty Magnolia	40	20	Evergreen	M	Yes	Yes	Yes	
5'+	Melaleuca linnarifolia	Flaxleaf Paperbark	30	30	Evergreen	L	Yes	No	No	
5'+	Melaleuca quinquinerva (viridifolia)	Cajeput Tree	40	20	Evergreen	M	Yes	Yes	Yes	
5'+	Metrosideros excelsa	New Zealand Christmas Tree	40	40	Evergreen	M	Yes	No	No	
5'+	Pinus eldarica (brutia)	Afghan Pine	60	50	Evergreen	L	Yes	Yes	Yes	

City of Newport Beach Parkway Tree Designation List										
Pkw y Size	Botanical Name	Common Name	Height	Spread	Type	Water Needs	24" Avail	36" Avail	48" Avail	Notes
5'+	Pistachia chinensis	Chinese Pistache	40	40	Deciduous	M	Yes	Yes	Yes	
5'+	Podocarpus macrophyllus	Yew Pine	50	50	Evergreen	M	Yes	No	No	
5'+	Prunus ilicifolia subsp. Iyonii	Catalina Cherry	30	30	Evergreen	VL	No	No	No	Available -15 Gal
5'+	Pyrus betulaefolia 'Southworth'	Dancer Pear	25	20	Deciduous		Yes	Yes	No	
5'+	Pyrus calleryana 'Aristocrat'	Aristocrat Pear	30	40	Deciduous	M	Yes	Yes	Yes	
5'+	Pyrus calleryana 'Chanticleer'	Chanticleer Pear	35	20	Deciduous	M	Yes	Yes	Yes	
5'+	Pyrus calleryana 'Redspire'	Redspire Pear	35	25	Deciduous	M	Yes	Yes	Yes	
5'+	Quercus douglasii	Blue Oak	50	50	Deciduous	VL	Yes	Yes	No	
5'+	Quercus ilex	Holly Oak	50	50	Evergreen	L	Yes	Yes	Yes	
5'+	Sapium sebiferum	Chinese Tallow Tree	40	35	Deciduous	M	Yes	Yes	No	
5'+	Sophora japonica 'Regent'	Chinese Scholar Tree	40	40	Deciduous	M	Yes	Yes	No	

City of Newport Beach Parkway Tree Designation List										
Pkw y Size	Botanical Name	Common Name	Height	Spread	Type	Water Needs *	24" Avail	36" Avail	48" Avail	Notes
5'+	Tabebuia avellanedae(Ipe)	Pink Trumpet Tree	30	30	Deciduous	M	Yes	Yes	Yes	
8'+	Araucaria heterophylla	Norfolk Island Pine	80	30	Evergreen	M	Yes	Yes	No	
8'+	Brachychiton discolor	Pink Flame Tree	70	50	Semi	L	No	No	No	Available -15 Gal
8'+	Cinnamomum camphora	Camphor Tree	50	60	Evergreen	M	Yes	Yes	Yes	
8'+	Erythrina caffra	Kaffirboo m Coral Tree	40	40	Evergreen	L	Yes	Yes	No	
8'+	Eucalyptus maculata	Spotted Gum	75	40	Evergreen	M	Yes	No	No	
8'+	Fraxinus velutina 'Modesto'	Modesto Ash	50	30	Deciduous	M	Yes	Yes	Yes	
8'+	Koeleruteria bipinnata	Chinese Flame Tree	50	50	Deciduous	M	Yes	Yes	Yes	
8'+	Liquidambar styraciflua 'Rotundiloba'	Round Leafed Sweetgum	60	35	Deciduous	M	Yes	Yes	No	
8'+	Lophostemon confertus	Brisbane Box	60	40	Evergreen	M	Yes	Yes	Yes	

City of Newport Beach Parkway Tree Designation List										
Pkw y Size	Botanical Name	Common Name	Height	Spread	Type	Water Needs *	24" Avail	36" Avail	48" Avail	Notes
8'+	Pinus canariensis	Canary Island Pine	80	50	Evergreen	L	Yes	Yes	Yes	
8'+	Pinus pinea	Italian Stone Pine	60	40	Evergreen	L	Yes	Yes	Yes	
8'+	Pinus torreyana	Torrey Pine	70	40	Evergreen	L	Yes	Yes	No	
8'+	Platanus acerifolia	London Plane Tree	70	40	Deciduous	M	Yes	Yes	No	
8'+	Platanus mexicana	Mexican Sycamore	60	40	Evergreen	M	Yes	Yes	No	
8'+	Platanus racemosa	California Sycamore	60	40	Deciduous	M	Yes	Yes	Yes	
8'+	Podocarpus gracilior (Afrocarpus gracilior)	Fern Pine	60	60	Evergreen		Yes	Yes	Yes	
8'+	Quercus agrifolia	Coast Live Oak	70	80	Evergreen	L	Yes	Yes	Yes	
8'+	Quercus engelmannii	Engleman Oak	60	80	Evergreen	L	Yes	Yes	No	
8'+	Quercus virginiana	Southern Live Oak	60	80	Evergreen	M	Yes	Yes	Yes	
8'+	Schinus molle	California Pepper	40	50	Evergreen	VL	Yes	Yes	Yes	

City of Newport Beach Parkway Tree Designation List										
Pkw y Size	Botanical Name	Common Name	Height	Spread	Type	Water Needs *	24" Avail	36" Avail	48" Avail	Notes
8'+	Sequoia sempervirens 'Aptos Blue'	Aptos Blue Redwood	60	30	Evergreen	H	Yes	Yes	Yes	
8'+	Tipuana tipu	Tipu Tree	50	60	Semi	M	Yes	Yes	Yes	
8'+	Ulmus parvifolia	"Drake" Chinese Elm	60	60	Semi	M	Yes	Yes	Yes	
8'+	Zelkova serrata	Sawleaf Zelkova	40	40	Deciduous	L	Yes	Yes	No	

MAINTENANCE AND PLANTING OF PARKWAY TREES

The City Council is vitally interested in beautification of City parkways. Public cooperation in helping to develop and maintain healthy and attractive parkway trees is encouraged.

I. MAINTENANCE OF PARKWAY TREES

The Municipal Operations Department will trim the parkway trees on a rotation schedule. An effort will be made to trim the parkway trees on less than a three-year cycle. If the rotation trimming is completed in less than three years, more frequent trimming will be performed on certain trees and in view areas. Public safety issues such as low branches and heavy foliage will be given priority over view trimming. An effort will be made to trim parkway trees located in heavy summer traffic areas during the fall and winter months. Annual trimming of certain species of trees prone to wind damage will be done prior to the winter season.

II. TREE DESIGNATION LISTS

The City Council has adopted an official street tree list, the Street Tree Designation List, which will be used by the Municipal Operations Department to determine species for replacement of trees removed from established parkways and for planning purposes in all new subdivisions and commercial developments. A second list, the Parkway Tree Designation List, has been added as a species palette for residents to choose approved, new and replacement, trees based on the size of parkway available for planting.

The Municipal Operations Director will have the authority to add species to the Street and Parkway Tree Designation Lists, which will be updated on an annual basis by the Municipal Operations Department staff and reviewed by the Parks, Beaches and Recreation Commission ("Commission") for approval before adoption by the City Council.

III. STANDARDS AND SPECIFICATIONS FOR PLANTING PARKWAY TREES

General Requirements

1. 72-hour notification shall be given to the Municipal Operations Department staff prior to the initial installation of parkway trees for approval of species, material quality, and planting supervision. 24-hour notice shall be given prior to all subsequent inspections as required.

2. Position of parkway trees is subject to approval by the Municipal Operations Department, and any tree not properly placed will be relocated at no cost to the City. In the interest of public safety, trees shall be planted not less than:
 - 15 feet back of beginning of curb returns at intersections.
 - 10 feet from lamp standards.
 - 10 feet from fire hydrants.
 - 5 feet from service walks or driveways.
 - 10 feet from meters and sewers.
 - 25 feet from stop signs.
3. Trees shall be a minimum container size of 36" size box.
 - Condition: Plants shall be symmetrical, typical for variety and species, healthy, vigorous, free from plant disease, insect pests and shall have healthy, normal root system free from being root bound. Trees shall not be pruned nor topped prior to delivery.
 - Inspection: All plant material shall be subject to inspection and approval by the Municipal Operations Department staff prior to planting. The City has the right to reject any item offered in its sole and absolute discretion.
 - Parkway Tree Planting: Per City Standards as found in the Tree Planting Detail available on the City's website.

IV. GUARANTEES

1. 36" boxed trees shall be guaranteed as to growth and health for a period of one year after final acceptance by the Municipal Operations Department staff.
2. Trees that fail to grow or are injured or damaged during planting operations shall be replaced within 15 days after notification. Replacement material shall be guaranteed to be specified as original guaranteed material.

V. ESTABLISHED PARKWAYS

1. For all City Trees in established parkways, adjacent property owners and/or applicants must:
 - Choose from the species listed on the Street Tree Designation List where it applies, or from the Parkway Tree Designation List for all other areas for planting new and replacement trees.

- Accept responsibility for watering and fertilizing new trees.
- Contact the City Arborist by sending a written request for one or more parkway trees or questions regarding this Policy to: Attn: City Arborist, P. O. Box 1768, Newport Beach, California 92659-1768.

2. The City will:

- Approve species, location, and spacing of tree planting.
- Furnish, install, stake, and initially fertilize new trees (exception would be trees planted in accordance with City Code 13.09.010).
- Prune and spray tree as required.
- Approve type of root barriers for installation.
- Assume trimming responsibilities.

VI. PARKWAYS IN ESTABLISHED RETAIL COMMERCIAL/OFFICE CENTERS

Parkway street trees that are removed because they are diseased or have damaged property may be replaced with the same species of trees (or a species other than the designated street tree) provided (a) the parkway street tree is located adjacent to or within an established retail commercial/office development; (b) replacement with the same species will maintain the appearance of the streetscape and/or ensure consistency with an established landscape master plan adopted by the adjoining landowner; (c) the parkway street trees have a history of little or no hardscape damage nor injury claims related to hardscape damage caused by the tree; and (d) the property owner has agreed in writing to repair or pay the cost of repair/and or replacement of hardscape or underground utilities damaged by the new trees.

[Attachment - Exhibit A]

[Attachment - Exhibit B]

History

Adopted I-19 - 11-22-1982
Amended I-19 - 11-14-1983
Amended I-19 - 10-22-1990
Amended I-19 - 10-22-1992
Amended I-19 - 1-24-1994 (changed to G-6)
Amended G-6 - 7-23-2002
Amended G-6 - 4-13-2004
Amended G-6 - 8-24- 2004
Amended G-6 - 9-8-2015
Amended G-6 - 8-8-2017

Exhibit A
Tree Designation List

G-6

STREET	ID	HOA	FROM	TO	BOTANICAL NAME	COMMON NAME
ANACAPA DR		Fashion Island	1300	1300	<i>Ficus rubiginosa</i>	1. Rusty Leaf Fig
BALBOA BLVD E			600	2100	<i>Syegrus romanzoffiana</i>	1. Queen Palm
BALBOA BLVD W			1000	1500	<i>Arbutus unedo</i> <i>Cassia leptophylla</i> <i>Washingtonia robusta</i>	1. Strawberry Tree 2. Gold Medallion Tree 3. Mexican Fan Palm
BALBOA BLVD W	Median		1000	3200	<i>Washingtonia robusta</i>	1. Mexican Fan Palm
BLUE KEY		Harbor View Hills South	3600	3734	<i>Magnolia grandiflora</i> 'Little Gem'	1. Magnolia, Little Gem
BLUE WATER DR		Broadmoor	2501	2825	<i>Magnolia grandiflora</i> 'St Mary'	1. Magnolia, St. Mary's
BOMBERO ST		Fashion Island	800	800	<i>Ficus rubiginosa</i>	1. Rusty Leaf Fig
BRIGHTON RD		Cameo Shores	4501	4651	<i>Bauhinia variegata</i>	1. Purple Orchid
BUCK GULLY DR		Harbor View Hills South	4000	4001	<i>Magnolia grandiflora</i> 'Little Gem'	1. Magnolia, Little Gem
CAMDEN DR	Parkway	Cameo Shores	4501	4699	<i>Bauhinia variegata</i>	1. Purple Orchid
CAMDEN DR	Slope	Cameo Shores	4500	4599	<i>Bauhinia variegata</i>	1. Purple Orchid
CAMEO HIGHLANDS DR		Cameo Highlands	500	735	<i>Bauhinia variegata</i>	1. Purple Orchid
CAMEO SHORES RD	Parkway	Cameo Shores	101	346	<i>Bauhinia variegata</i>	1. Purple Orchid
CAMEO SHORES RD	Slope	Cameo Shores	100	350	<i>Bauhinia variegata</i>	1. Purple Orchid
CATAMARAN DR		Harbor View Hills South	3400	3630	<i>Magnolia grandiflora</i> 'Little Gem'	1. Magnolia, Little Gem
COAST HWY E			1600	1600	1. <i>Bauhinia blakeana</i> 2. <i>Archontophoenix cunninghamiana</i>	1. Hong Kong Orchid 2. King Palm

Exhibit A
Tree Designation List

G-6

COAST HWY E	Median		2200	3934	1. <i>Bauhinia blakeana</i> 2. <i>Archontophoenix cunningghamiana</i>	1. Hong Kong Orchid 2. King Palm
COAST HWY E			4001	4401	1. <i>Bauhinia blakeana</i> 2. <i>Archontophoenix cunningghamiana</i>	1. Hong Kong Orchid 2. King Palm
COAST HWY E			4104	4400	1. <i>Bauhinia blakeana</i> 2. <i>Archontophoenix cunningghamiana</i>	1. Hong Kong Orchid 2. King Palm
COAST HWY E	Median		300	2100	1. <i>Spathodea campanulata</i> 2. <i>Archontophoenix cunningghamiana</i>	1. African Tulip Tree 2. King Palm
CORTLAND DR		Cameo Highlands	4500	4839	<i>Bauhinia variegata</i>	1. Purple Orchid
CROWN DR	Even	Harbor View Hills	2720	2740	<i>Magnolia grandiflora</i> 'Little Gem'	1. Magnolia, Little Gem
CROWN DR	Parkway	Harbor View Hills	2501	2735	<i>Magnolia grandiflora</i> 'Little Gem'	1. Magnolia, Little Gem
DE ANZA DR					<i>Magnolia grandiflora</i> 'cultivar'	
DORCHESTER RD		Cameo Highlands	4500	4833	<i>Bauhinia variegata</i>	1. Purple Orchid
EBBTIDE RD	Even	Harbor View Hills	2700	2700	<i>Magnolia grandiflora</i> 'Little Gem'	1. Magnolia, Little Gem
EBBTIDE RD	Parkway	Harbor View Hills	1100	2915	<i>Magnolia grandiflora</i> 'Little Gem'	1. Magnolia, Little Gem
EVENING CANYON RD			301	365	<i>Erythrina caffra</i>	1. Coral Tree
FAIRFIELD DR	Parkway	Cameo Shores	4501	4645	<i>Bauhinia variegata</i>	1. Purple Orchid
FAIRFIELD DR	Slope	Cameo Shores	4500	4500	<i>Bauhinia variegata</i>	1. Purple Orchid

Exhibit A
Tree Designation List

G-6

FARALLON DR	Fashion Island	1900	2101	<i>Ficus rubiginosa</i>	1. Rusty Leaf Fig
GARRETT DR	Cameo Highlands Parkway	501	725	<i>Bauhinia variegata</i>	1. Purple Orchid
GARRETT DR	Cameo Highlands Slope	500	500	<i>Bauhinia variegata</i>	1. Purple Orchid
GOLDENROD AVE		200	721	<i>Washingtonia robusta</i>	1. Mexican Fan Palm
GOLDENROD AVE	Harbor View Hills	900	1133	<i>Magnolia grandiflora</i> 'Little Gem'	1. Magnolia, Little Gem
HAMPDEN RD	Cameo Shores Even	4500	4700	<i>Bauhinia variegata</i>	1. Purple Orchid
HAMPDEN RD	Cameo Shores Parkway	4501	4717	<i>Bauhinia variegata</i>	1. Purple Orchid
HARBOR VIEW DR	Harbor View Hills Parkway	2500	3007	<i>Magnolia grandiflora</i> 'Little Gem'	1. Magnolia, Little Gem
HARBOR VIEW DR	Harbor View Hills Slope	2800	3101	<i>Magnolia grandiflora</i> 'Little Gem'	1. Magnolia, Little Gem
HELIOTROPE AVE *7		200	721	1. <i>Magnolia grandiflora</i> 'Little Gem' 2. <i>Howea Fosteriana</i>	1. Magnolia, Little Gem 2. Kentia Palm
HERON WAY	Harbor View Hills South	1300	1325	<i>Magnolia grandiflora</i> 'Little Gem'	1. Magnolia, Little Gem
INLET ISLE DR	Harbor View Hills South	3701	4012	<i>Magnolia grandiflora</i> 'Little Gem'	1. Magnolia, Little Gem
IRVINE AVE	Median			1. <i>Phoenix dactylifera</i> 2. <i>Spathodea campanulata</i>	1. Date palm 2. African tulip
ISLAND VIEW DR	Broadmoor	2501	2727	1. <i>Magnolia, Little flora</i> 'Little Gem' 2. <i>Howea Fosteriana</i>	1. Magnolia, St.flora 'Little Gem' 2. Howea Fosteriana
JAMBOREE RD		500	600	1. <i>Tabebuia avellanedae</i> 2. <i>Liquidambar styraciflua</i> 'Rotundiloba'	1. Lavendar Trumpet

Exhibit A
Tree Designation List

G-6

								2. Roundleaf Sweet Gum
JAMBOREE RD	Median	800	900				1. <i>Tabebuia avellanedae</i> 2. <i>Liquidambar styraciflua</i> 'Rotundiloba'	1. Lavendar Trumpet 2. Roundleaf Sweet Gum
JAMBOREE RD	Median	1100	1500				1. <i>Tabebuia avellanedae</i> 2. <i>Liquidambar styraciflua</i> 'Rotundiloba'	1. Lavendar Trumpet 2. Roundleaf Sweet Gum
KEEL DR		1200	1537	Harbor View Hills South			<i>Magnolia grandiflora</i> 'Little Gem'	1. Magnolia, Little Gem
KEY BAY		3800	3930	Harbor View Hills South			<i>Magnolia grandiflora</i> 'Little Gem'	1. Magnolia, Little Gem
KEY VIEW		1436	1456	Harbor View Hills South			<i>Magnolia grandiflora</i> 'Little Gem'	1. Magnolia, Little Gem
KEY WEST		1200	1224	Harbor View Hills South			<i>Magnolia grandiflora</i> 'Little Gem'	1. Magnolia, Little Gem
LIGHTHOUSE LN		2500	2828	Broadmoor			<i>Magnolia grandiflora</i> 'St Mary'	1. Magnolia, St. Mary's
MACARTHUR BLVD							1. <i>Magnolia grandiflora</i> 'Little Gem' 2. <i>Liquidambar styraciflua</i> 'Rotundiloba'	1. Magnolia, Little Gem 2. Roundleaf Sweet Gum
MARGUERITE AVE		200	721				<i>Archontopoenix cunninghamiana</i>	1. King Palm
MARGUERITE AVE		1600	1740				<i>Archontopoenix cunninghamiana</i>	1. King Palm
MARGUERITE AVE	Even	1520	1520				<i>Archontopoenix cunninghamiana</i>	1. King Palm

Exhibit A
Tree Designation List

G-6

MILFORD DR	Cameo Shores	101	345	<i>Bauhinia variegata</i>	1. Purple Orchid
MORNING CANYON RD		318	342	<i>Erythrina caffra</i>	1. Coral Tree
NEWPORT BLVD		100	600	1. <i>Tipuana tipu</i> 2. <i>Tristania laurina</i> 3. <i>Washingtonia robusta</i>	1. Tipu 2. <i>Tristania Laurina</i> 3. Mexican Fan Palm
NEWPORT BLVD		2600	3300	1. <i>Tipuana tipu</i> 2. <i>Tristania laurina</i> 3. <i>Washingtonia robusta</i>	1. Tipu 2. <i>Tristania Laurina</i> 3. Mexican Fan Palm
NEWPORT CENTER DR		100	900	<i>Washingtonia robusta</i>	1. Mexican Fan Palm
NEWPORT CENTER DR		1000	1200	<i>Washingtonia robusta</i>	1. Mexican Fan Palm
NEWPORT CENTER DR	Median	100	900	<i>Washingtonia robusta</i>	1. Mexican Fan Palm
NEWPORT CENTER DR	Median	1000	1200	<i>Washingtonia robusta</i>	1. Mexican Fan Palm
ORRINGTON RD	Cameo Shores	4500	4645	<i>Bauhinia variegata</i>	1. Purple Orchid
ORRINGTON RD	Cameo Shores	4510	4510	<i>Bauhinia variegata</i>	1. Purple Orchid
OUTRIGGER DR	Harbor View Hills South	1200	1430	<i>Magnolia grandiflora</i> 'Little Gem'	1. Magnolia, Little Gem
PARK GREEN DR	Harbor View Hills South	3601	3907	<i>Magnolia grandiflora</i> 'Little Gem'	1. Magnolia, Little Gem
PEARL AVE		100	132	<i>Magnolia grandiflora</i> 'Little Gem'	1. Little Gem Magnolia
PEBBLE DR	Harbor View Hills	2700	2921	<i>Magnolia grandiflora</i> 'Little Gem'	1. Magnolia, Little Gem
PEBBLE DR	Harbor View Hills	2800	2800	<i>Magnolia grandiflora</i> 'Little Gem'	1. Magnolia, Little Gem
PERHAM RD	Cameo Shores	4501	4645	<i>Bauhinia variegata</i>	1. Purple Orchid

Exhibit A
Tree Designation List

G-6

PERHAM RD	Slope	Cameo Shores	4500	4500	<i>Bauhinia variegata</i>	1. Purple Orchid 1. Water Gum 2. African Tulip Tree
POPPY AVE			200	352	<i>Tristania laurina</i> <i>Spathodea campanulata</i>	
QUIET COVE			3400	3449	<i>Geijera parviflora</i>	1. Australian Willow
ROCKFORD PL		Cameo Highlands	500	521	<i>Bauhinia variegata</i>	1. Purple Orchid
ROCKFORD RD		Cameo Highlands	500	721	<i>Bauhinia variegata</i>	1. Purple Orchid
ROXBURY RD		Cameo Shores	4500	4646	<i>Bauhinia variegata</i>	1. Purple Orchid
SALT AIR CIR		Broadmoor	2501	2601	<i>Magnolia grandiflora</i> 'St Mary'	1. Magnolia, St. Mary's
SALT AIR DR	Odd	Broadmoor	1301	1301	<i>Magnolia grandiflora</i> 'St Mary'	1. Magnolia, St. Mary's
SALT AIR DR	Slope	Broadmoor	1300	1320	<i>Magnolia grandiflora</i> 'St Mary'	1. Magnolia, St. Mary's
SAN CLEMENTE DR		Fashion Island	850	901	<i>Ficus rubiginosa</i>	1. Rusty Leaf Fig
SAN MIGUEL DR		Fashion Island	300	366	<i>Ficus rubiginosa</i>	1. Rusty Leaf Fig
SAN MIGUEL DR		Fashion Island	1600	2601	<i>Ficus rubiginosa</i>	1. Rusty Leaf Fig
SAN NICOLAS DR		Fashion Island	500	567	<i>Ficus rubiginosa</i>	1. Rusty Leaf Fig
SAND KEY		Harbor View Hills South	1200	1235	<i>Magnolia grandiflora</i> 'Little Gem'	1. Magnolia, Little Gem
SANDCASTLE DR		Harbor View Hills South	850	1555	<i>Magnolia grandiflora</i> 'Little Gem'	1. Magnolia, Little Gem
SANDPIPER DR	Parkway	Harbor View Hills	1010	1106	<i>Magnolia grandiflora</i> 'Little Gem'	1. Magnolia, Little Gem
SANDPIPER DR	Slope	Harbor View Hills	1015	1101	<i>Magnolia grandiflora</i> 'Little Gem'	1. Magnolia, Little Gem

Exhibit A
Tree Designation List

G-6

SANDUNE LN	Harbor View Hills South	3800	3930	<i>Magnolia grandiflora</i> 'Little Gem'	1. Magnolia, Little Gem
SANTA BARBARA DR	Fashion Island	870	1001	<i>Ficus rubiginosa</i>	1. Rusty Leaf Fig
SANTA CRUZ DR	Fashion Island	800	901	<i>Ficus rubiginosa</i>	1. Rusty Leaf Fig
SANTA MARIA RD	Fashion Island			<i>Ficus rubiginosa</i>	1. Rusty Leaf Fig
SANTA ROSA DR	Fashion Island	1500	1501	<i>Ficus rubiginosa</i>	1. Rusty Leaf Fig
SAUSALITO DR	Harbor View Hills South	3400	3621	<i>Magnolia grandiflora</i> 'Little Gem'	1. Magnolia, Little Gem
SEA LN	Harbor View Hills	900	950	<i>Magnolia grandiflora</i> 'Little Gem'	1. Magnolia, Little Gem
SEABREEZE LN	Harbor View Hills South	3400	3631	<i>Magnolia grandiflora</i> 'Little Gem'	1. Magnolia, Little Gem
SEACREST DR	Harbor View Hills South	1200	1533	<i>Magnolia grandiflora</i> 'Little Gem'	1. Magnolia, Little Gem
SETTING SUN DR	Harbor View Hills	2701	3007	<i>Magnolia grandiflora</i> 'Little Gem'	1. Magnolia, Little Gem
SETTING SUN DR	Harbor View Hills	2700	3000	<i>Magnolia grandiflora</i> 'Little Gem'	1. Magnolia, Little Gem
SURFVIEW LN	Harbor View Hills South	3500	3620	<i>Magnolia grandiflora</i> 'Little Gem'	1. Magnolia, Little Gem
SURREY DR	Cameo Highlands	4500	4824	<i>Bauhinia variegata</i>	1. Purple Orchid
TILLER WAY	Harbor View Hills South	900	1039	<i>Magnolia grandiflora</i> 'Little Gem'	1. Magnolia, Little Gem
TOPSIDE LN	Harbor View Hills South	3798	4015	<i>Magnolia grandiflora</i> 'Little Gem'	1. Magnolia, Little Gem
TREMONT LN	Cameo Shores	4500	4600	<i>Bauhinia variegata</i>	1. Purple Orchid
WATERFRONT DR		2200	2220	<i>Schinus Molle</i>	California Pepper

Exhibit A
Tree Designation List

G-6

WAYNE RD	Cameo Highlands	4500	4621	<i>Bauhinia variegata</i>	1. Purple Orchid
WHITE SAILS WAY	Harbor View Hills	1000	1133	<i>Magnolia grandiflora</i> 'Little Gem'	1. Magnolia, Little Gem

City of Newport Beach Parkway Tree Designation List										
Pkw y Size	Botanical Name	Common Name	Height	Spread	Type	Water Need	24" Avai I.	36" Avai I.	48" Avai I.	Notes
2'+	<u>Acacia baileyana</u>	<u>Bailey Acacia</u>	25	15	<u>Evergreen</u>	L	Yes	No	No	
2'+	Archontophoenix cunninghamiana	King Palm	40	20	Evergreen	M	Yes	Yes	Yes	
2'+	Chionanthus retusus	Chinese Fringe Tree	20	15	Deciduous	M	Yes	Yes	No	
2'+	Heteromeles arbutifolia	California Holly	20	15	Evergreen	L	No	No	No	Available-15 Gal
2'+	<u>Ligustrum lucidum</u>	<u>Glossy Privet</u>	25	15	<u>Evergreen</u>	L	Yes	Yes	No	
2'+	<u>Melaleuca nesophila</u>	<u>Pink Melaleuca</u>	25	15	<u>Evergreen</u>	L	Yes	No	No	
2'+	Photinia x fraseri	Fraser Photinia	20	10	Evergreen	M	Yes	Yes	No	
2'+	Prunus cerasifera 'Newport'	Newport Plum	15	10	Deciduous		Yes	No	No	
2'+	Prunus cerasifera 'Purple Pony'	Dwarf Purple Leafed Plum	15	10	Deciduous		Yes	No	No	
2'+	Rhaphiolepis x 'Montic' Maestri <u>Beauty'</u>	Indian Hawthorne	15	10	Evergreen	M	Yes	Yes	No	

Formatted Table

City of Newport Beach Parkway Tree Designation List											
PKwy Size	Botanical Name	Common Name	Height	Spread	Type	Water Need	24" Avail	36" Avail	48" Avail	Notes	
2'+	<i>Tecoma stans</i>	Yellow Bells	20	15	Evergreen	M	Yes	No	No		
2'+	<i>Tabebuia chrysoetricha</i>	Yellow Trumpet Tree	25	20	Deciduous	M	Yes	No	No		
2'+	<i>Trachycarpus fortunei</i>	Windmill Palm	30	10	Evergreen	M	Yes	Yes	Yes		
2'+	<i>Tristania laurina</i> (<i>Tristaniaopsis laurina</i>)	Water Gum	20	10	Evergreen	M	Yes	Yes	No		
-	-	-	-	-	-	-	-	-	-	-	
3'+	<i>Betula pendula</i>	European White Birch	40	25	Deciduous	H	Yes	Yes	Yes		
3'+	<i>Brahea armata</i>	Mexican Blue Palm	30	15	Evergreen	L	Yes	No	No		
3'+	<i>Brahea edulis</i>	Guadalupe Palm	30	10	Evergreen	L	No	Yes	No		
3'+	<i>Cercis canadensis</i> 'Forest Pansy'	Forest Pansy Redbud	15	10	Deciduous	M	Yes	Yes	No		
3'+	<i>Cercis occidentalis</i>	Western Redbud	15	10	Deciduous	L	Yes	Yes	No		
3'+	<i>Chitalpa tashkentensis</i>	Chitalpa	25	25	Deciduous	L	Yes	Yes	No		

Formatted Table

Formatted: Space After: 10 pt, Line spacing: Multiple 1.15 li

Formatted: Font color: Auto

Formatted Table

**City of Newport Beach
Parkway Tree Designation List**

Pkw y Size	Botanical Name	Common Name	Height	Spread	Type	Water Need s*	24" Avai			36" Avai			48" Avai			Notes
							Yes	No	I.	Yes	No	I.	Yes	No	I.	
3'+	<u>Duranta repens</u>	<u>Golden Dewdrop</u>	20	15	Evergreen	M	Yes	No	No	No	No	No	No			
3'+	Eryobotrya deflexa fruit	Bronze Loquat	25	25	Evergreen	M	Yes	Yes	Yes	No	No	No	No			
3+	<u>Handroanthus chrysotricha</u>	<u>Yellow Trumpet Tree</u>	25	20	Deciduous	M	Yes	No	No	No	No	No	No			
3'+	Heteromeles arbutifolia	Toyon Tree	15	10	Evergreen	L	No	No	No	No	No	No	No	Available-15 Gal		
3'+	Howea forsteriana	Kentia Palm	35	20	Evergreen	M	Yes	Yes	Yes	No	No	No	No			
3'+	Hymenosporum flavum	Sweetshade	40	20	Evergreen	M	No	No	No	No	No	No	No	Available-15 Gal		
3'+	<u>Hexaltalarensis Wilsonii</u> X	<u>Wilson Holly</u>	20	15	Evergreen	M	Yes	No	No	No	No	No	No			
3'+	Lagerstroemia indica 'Indian Tribes'	Crape Myrtle	25	20	Deciduous	M	Yes	Yes	Yes	Yes	Yes	Yes	Yes	Natchez(white) Dynamite(vibrant red) Tuscarora(pink) Muskogee(purple)		

Formatted Table

Formatted Table

**City of Newport Beach
Parkway Tree Designation List**

Pkwy Size	Botanical Name	Common Name	Height	Spread	Type	Water Needs*	24" Avai I.			36" Avai I.			48" Avai I.			Notes
							Yes	No	Yes	No	Yes	No	Yes	No		
3'+	Livistona chinensis	Chinese Fountain Palm	20	10	Evergreen	M	Yes	No	Yes	No	Yes	No				
3'+	<u>Livistona decora</u>	<u>Fountain Palm</u>	<u>20</u>	<u>10</u>	<u>Evergreen</u>	<u>M</u>	<u>Yes</u>	<u>No</u>	<u>Yes</u>	<u>No</u>	<u>Yes</u>	<u>No</u>				
3'+	Magnolia grandiflora 'Little Gem'	Little Gem Magnolia	20	15	Evergreen	M	Yes	Yes	Yes	Yes	Yes	Yes				
3'+	Maytenus boaria	Mayten Tree	20	15	Evergreen	M	Yes	Yes	Yes	Yes	Yes	Yes				
3'+	Rhus integrifolia	Lemonade Berry	10	10	Evergreen	VL	No	No	No	No	No	No	Available-15 Gal			
3'+	<u>Rhus lancea</u>	<u>African Sumac</u>	<u>25</u>	<u>20</u>	<u>Evergreen</u>	<u>L</u>	<u>Yes</u>	<u>No</u>	<u>Yes</u>	<u>No</u>	<u>No</u>	<u>No</u>				
3'+	Syagrus romanzoffiana	Queen Palm	50	20	Evergreen	M	Yes	Yes	Yes	Yes	Yes	Yes				
3'+	Washingtonia robusta	Mexican Fan Palm	90	20	Evergreen	L	Yes	Yes	Yes	Yes	Yes	No				
3'+	<u>Wodyetia bifurcata</u>	<u>Foxtail Palm</u>	<u>40</u>	<u>20</u>	<u>Evergreen</u>	<u>M</u>	<u>Yes</u>	<u>No</u>	<u>Yes</u>	<u>No</u>	<u>No</u>	<u>No</u>				
-	-	-	-	-	-	-	-	-	-	-	-	-	-			
4'+	Arbutus unedo 'Marina'	Strawberry Tree	20	20	Evergreen	L	Yes	Yes	Yes	Yes	Yes	Yes				
4'+	Brachyhiton populeneus	Bottle tree	50	40	Evergreen	L	Yes	Yes	Yes	Yes	Yes	No				

City of Newport Beach
Parkway Tree Designation List

Pkwy Size	Botanical Name	Common Name	Height	Spread	Type	Water Need S*	24" Avail		36" Avail		48" Avail		Notes
							Y	N	Y	N	Y	N	
4++	<i>Callistemon citrinus</i>	Lemon Bottlebrush	25	20	Evergreen	L	Yes	Yes	Yes	Yes	No	No	-
4++	<i>Callistemon viminalis</i>	Weeping Bottlebrush	25	20	Evergreen	M	Yes	Yes	Yes	Yes	No	No	-
4+	<i>Cassia leptophylla</i>	Gold Medallion tree	25	20	Evergreen	M	Yes	Yes	Yes	Yes	No	No	
4++	<i>Eucalyptus fieffolia</i>	Red Flowering Gum	40	40	Evergreen	M	Yes	Yes	No	No	No	No	-
4+	<i>Geijera parvifolia</i>	Australian Willow	40	25	Evergreen	L	Yes	Yes	Yes	Yes	Yes	Yes	
4++	<i>Callistemon viminalis</i>	Weeping Bottlebrush	25	20	Evergreen	M	Yes	Yes	Yes	Yes	No	No	-
4+	<i>Laurus nobilis</i>	Grecian Laurel	40	30	Evergreen	L	Yes	Yes	Yes	Yes	Yes	Yes	
4+	<i>Laurus 'Saratoga'</i>	Saratoga Laurel	40	30	Evergreen	L	Yes	Yes	No	No	No	No	
4+	<i>Melaleuca citrinus</i>	Lemon Bottlebrush	25	20	Evergreen	L	Yes	Yes	Yes	Yes	No	No	-

Formatted Table

Formatted Table

**City of Newport Beach
Parkway Tree Designation List**

Pkw y Size	Botanical Name	Common Name	Height	Spread	Type	Water Need	24" Avai			36" Avai			48" Avai			Notes
							I.	s.*	I.	I.	I.	I.	I.	I.	I.	
4'+	Callistemon Melaleuca viminalis	Weeping Bottlebrush	25	20	Evergreen	M	Yes	Yes	Yes	No	No	No	No	No	-	
4'+	Rhus lancea	African Sumac	25	20	Evergreen	L	Yes	Yes	No	No	No	No	No	No	-	
4'+	Spathodea campanulata	African Tulip Tree	30	20	Evergreen	M	Yes	Yes	Yes	No	No	No	No	No	-	
4'+	Stenocarpus sinuatus	Firewheel Tree	25	15	Evergreen	M	Yes	Yes	No	No	No	No	No	No	-	
5'+	Agonis flexuosa	Peppermint Tree	35	35	Evergreen	L	Yes	Yes	No	No	Yes	Yes	Yes	Yes	-	
5'+	Agonis flexuosa 'Afterdark'	Afterdark Peppermint Willow	35	35	Evergreen	L	Yes	Yes	No	No	No	No	No	No	-	
5'+	Albizia julibrissin	Silk Tree	40	40	Deciduous	M	Yes	Yes	Yes	Yes	No	No	No	No	-	
5'+	Bauhinia variegata (purplea)	Purple Orchid Tree	30	20	Deciduous	M	Yes	Yes	Yes	Yes	No	No	No	No	-	
5'+	Brachychiton acerfolius	Flame Tree	40	30	Evergreen	L	Yes	Yes	Yes	Yes	No	No	No	No	-	
5'+	Calodendron capense	Cape Chestnut	40	40	Deciduous	M	Yes	Yes	Yes	No	No	No	No	No	-	

Formatted Table

Formatted Table

City of Newport Beach Parkway Tree Designation List										
PKwy y Size	Botanical Name	Common Name	Height	Spread	Type	Water Need	24" Avai I.	36" Avai I.	48" Avai I.	Notes
5'+	Erythrina americana (E. coralloides)	Naked Coral Tree	30	30	Deciduous	L	Yes	Yes	No	
5'+	Eucalyptus sideroxylon	Red or Pink Ironbark	60	40	Evergreen	L	Yes	No	No	-
5'+	Fraxinus oxycarpa 'Raywood'	Raywood Ash	35	30	Deciduous	M	Yes	Yes	Yes	
5'+	Ginkgo biloba 'Fruitless'	Maidenhair Tree	60	40	Deciduous	M	Yes	Yes	Yes	
5'+	Handroanthus impetiginosa	Pink Trumpet Tree	30	30	Deciduous	M	Yes	Yes	Yes	-
5'+	Jacaranda mimosifolia	Jacaranda	40	50	Deciduous	M	Yes	Yes	Yes	
5'+	Koelreuteria paniculata	Goldenrain Tree	25	25	Deciduous	L	Yes	Yes	Yes	
58'+	Lophostemon confertus	Brisbane Box	60	40	Evergreen	M	Yes	Yes	Yes	-
5'+	Lyonothamnus floribundus	Catalina Ironwood	50	30	Evergreen	VL	Yes	No	No	
5'+	Magnolia grandiflora 'Majestic Beauty'	Majestic Beauty Magnolia	40	20	Evergreen	M	Yes	Yes	Yes	-

Formatted Table

City of Newport Beach Parkway Tree Designation List										
Pkw y Size	Botanical Name	Common Name	Height	Spread	Type	Water Need	24" Avai I.	36" Avai I.	48" Avai I.	Notes
5'+	Magnolia grandiflora 'Russell'	Russell Magnolia	20	15	Evergreen	M	Yes	Yes	Yes	
5'+	Magnolia grandiflora 'Saint Mary'	Saint Mary Magnolia	25	20	Evergreen	M	Yes	Yes	Yes	
5'+	Magnolia grandiflora 'Samuel Sommer'	Samuel Sommer Magnolia	40	30	Evergreen	M	Yes	Yes	Yes	
5'+	Magnolia grandiflora 'Majestic-Beauty'	Majestic-Beauty Magnolia	40	20	Evergreen	M	Yes	Yes	Yes	-
5'+	Melaleuca linmarifolia	Flaxleaf Paperbark	30	30	Evergreen	L	Yes	No	No	
5'+	Melaleuca quinquinerva (viridifolia)	Cajuput Tree	40	20	Evergreen	M	Yes	Yes	Yes	-
5'+	Metrosideros excelsa	New Zealand Christmas Tree	40	40	Evergreen	M	Yes	No	No	
5'+	Parkinsonia x 'Desert Museum'	Desert Museum Palo Verde	30	35	Semi	L	Yes	Yes	Yes	

Formatted Table

**City of Newport Beach
Parkway Tree Designation List**

Pkwy Size	Botanical Name	Common Name	Height	Spread	Type	Water Needs*	Availability			Notes
							24" I.	36" I.	48" I.	
5'+	Pinus eldarica	Afghan Pine	60	50	Evergreen	L	Yes	Yes	Yes	
5'+	Pistachia chinensis	Chinese Pistache	40	40	Deciduous	M	Yes	Yes	Yes	
5'+	Podocarpus macrophyllus	Yew Pine	50	50	Evergreen	M	Yes	No	No	
5'+	Prunus ilicifolia subsp. lyonii	Catalina Cherry	30	30	Evergreen	VL	No	No	No	Available-15 Gal
5'+	Pyrus betulaeifolia 'Southworth'	Dancer Pear	25	20	Deciduous		Yes	Yes	No	
5'+	Pyrus calleryana 'Aristocrat'	Aristocrat Pear	30	40	Deciduous	M	Yes	Yes	Yes	
5'+	Pyrus calleryana 'Chanticleer'	Chanticleer Pear	35	20	Deciduous	M	Yes	Yes	Yes	
5'+	Pyrus calleryana 'Redspire'	Redspire Pear	35	25	Deciduous	M	Yes	Yes	Yes	
<u>5'+</u>	<u>Pyrus kawakamii</u>	<u>Evergreen n Pear</u>	<u>35</u>	<u>25</u>	<u>Deciduous</u>	<u>M</u>	<u>Yes</u>	<u>Yes</u>	<u>No</u>	
5'+	Quercus douglasii	Blue Oak	50	50	Deciduous	VL	Yes	Yes	No	
5'+	Quercus ilex	Holly Oak	50	50	Evergreen	L	Yes	Yes	Yes	
5'+	Sapium sebiferum	Chinese Tallow Tree	40	35	Deciduous	M	Yes	Yes	No	

Formatted Table

Formatted Table

City of Newport Beach Parkway Tree Designation List										
Pkw y Size	Botanical Name	Common Name	Height	Spread	Type	Water Needs*	24" Avai I.	36" Avai I.	48" Avai I.	Notes
5+	Sophora japonica 'Regent'	Chinese Scholar Tree	40	40	Deciduo us	M	Yes	Yes	No	
8+	Podocarpus graciliter (Afrocarpus graciliter)falcatus	Fern Pine	60	60	Evergree n		Yes	Yes	Yes	
5+	Tabebuia avellanaeae(1pe)	Pink Trumpet Tree	30	30	Deciduo us	M	Yes	Yes	Yes	-
-	-	-	-	-	-	-	-	-	-	-
8+	Araucaria heterophylla	Norfolk Island Pine	80	30	Evergree n	M	Yes	Yes	No	
8+	Brachychiton discolor	Pink Flame Tree	70	50	Semi	L	No	No	No	Available-15 Gal
8+	Cinnamomum camphora	Camphor Tree	50	60	Evergree n	M	Yes	Yes	Yes	
8+	Erythrina caffra	Kaffirboo in Coral Tree	40	40	Evergree n	L	Yes	Yes	No	
8+	Eucalyptus maculata	Spotted Gum	75	40	Evergree n	M	Yes	No	No	-
8+	Fraxinus velutina 'Modesto'	Modesto Ash	50	30	Deciduo us	M	Yes	Yes	Yes	

**City of Newport Beach
Parkway Tree Designation List**

PKwy Size	Botanical Name	Common Name	Height	Spread	Type	Water Need	24" Avai l.	36" Avai l.	48" Avai l.	Notes
8'+	Koelreuteria bipinnata	Chinese Flame Tree	50	50	Deciduo us	M	Yes	Yes	Yes	
8'+	Liquidambar styraciflua 'Rotundiloba'	Round Leafed Sweetgum	60	35	Deciduo us	M	Yes	Yes	No	-
8'+	Lepidodermis confertus	Brisbane Box	60	40	Evergree n	M	Yes	Yes	Yes	-
8'+	Pinus canariensis	Canary Island Pine	80	50	Evergree n	L	Yes	Yes	Yes	
8'+	Pinus pinea	Italian Stone Pine	60	40	Evergree n	L	Yes	Yes	Yes	
8'+	Pinus torreyana	Torrey Pine	70	40	Evergree n	L	Yes	Yes	No	
8'+	Platanus acerifoliax hispanica	London Plane Tree	70	40	Deciduo us	M	Yes	Yes	No	
8'+	Platanus mexicana	Mexican Sycamore	60	40	Evergree n	M	Yes	Yes	No	
8'+	Platanus racemosa	California Sycamore	60	40	Deciduo us	M	Yes	Yes	Yes	

Formatted Table

City of Newport Beach Parkway Tree Designation List										
Pkw y Size	Botanical Name	Common Name	Height	Spread	Type	Water Need s*	24" Avai I.	36" Avai I.	48" Avai I.	Notes
8'+	Podocarpus graciliter (Afrocarpus graciliter)	Fern Pine	60	60	Evergreen	-	Yes	Yes	Yes	-
8'+	Quercus agrifolia	Coast Live Oak	70	80	Evergreen	L	Yes	Yes	Yes	
8'+	Quercus engelmannii	Englema n Oak	60	80	Evergreen	L	Yes	Yes	No	
8'+	<u>Quercus lobata</u>	<u>Valley Oak</u>	<u>70</u>	<u>50</u>	<u>Deciduo us</u>	<u>L</u>	<u>Yes</u>	<u>Yes</u>	<u>No</u>	
8'+	Quercus virginiana	Southern Live Oak	60	80	Evergreen	M	Yes	Yes	Yes	
8'+	<u>Roystonea regia</u>	<u>Cuban Royal Palm</u>	<u>80</u>	<u>40</u>	<u>Evergreen</u>	<u>M</u>	<u>Yes</u>	<u>Yes</u>	<u>No</u>	
8'+	Schinus molle	Californi a Pepper	40	50	Evergreen	VL	Yes	Yes	Yes	
8'+	Sequoia sempervirens 'Aptos-Blue'	Aptos Blue Redwood	60	30	Evergreen	H	Yes	Yes	Yes	-
8'+	Tipuana tipu	Tipu Tree	50	60	Semi	M	Yes	Yes	Yes	
8'+	Ulmus parvifolia 'Drake'	"Drake" Chinese Elm	60	60	Semi	M	Yes	Yes	Yes	
8'+	Zelkova serrata	Sawleaf Zelkova	40	40	Deciduo us	L	Yes	Yes	No	

Formatted Table

Formatted: Left

Exhibit B

G-6



November 15, 2018

Kevin Pekar
Park Maintenance Supervisor, Arborist
General Services Department
592 Superior Ave
Newport Beach, CA 92663

Re: Eastbluff Homeowners Community Association
Parkway Tree Designation List

Dear Mr. Pekar:

Thank you for your continued assistance to the Eastbluff community in developing a Parkway Tree Designation List for Eastbluff.

Because of our meeting on October 23, 2018 a proposed Designation List was developed, and that Parkway Tree Designation List was presented to the Board of Directors of the Eastbluff Homeowners Community Association at their November 5, 2018 meeting. At the meeting by a unanimous vote the Board of Directors approved the attached list as the Eastbluff Parkway Tree Designation List. They request that you commence the necessary process to have the Parks, Beaches and Recreation Commission and the City Council address the proposed list.

If I can be of further assistance, please contact me.

On Behalf of the Board of Directors
Eastbluff Homeowners Community Association

A handwritten signature in black ink, appearing to read "Scott D. Smith".

Scott D. Smith, CCAM, CCAM-PM, CAMEX
Principal
South Coast Property Management, Inc. ACMB



City of Newport Beach Parkway Tree Designation List

ATTACHMENT 2

Pkwy Size	Botanical Name	Common Name	Height	Spread	Type	Water Needs*	24" Avail.	36" Avail.	48" Avail.	Notes
2'+	Tabebuia chrysotricha	Yellow Trumpet Tree	25	20	Deciduous	M	Yes	No	No	
2'+	Tristania laurina (Tristaniaopsis laurina)	Water Gum	20	10	Evergreen	M	Yes	Yes	No	
3'+	Cercis canadensis 'Forest Pansy'	Forest Pansy Redbud	15	10	Deciduous	M	Yes	Yes	No	
3'+	Cercis occidentalis	Western Redbud	15	10	Deciduous	L	Yes	Yes	No	
3'+	Chitalpa tashkentensis	Chitalpa	25	25	Deciduous	L	Yes	Yes	No	
3'+	Eryobotrya deflexa no fruit	Bronze Loquat	25	25	Evergreen	M	Yes	Yes	No	
3'+	Lagerstroemia indica 'Indian Tribes'	Crape Myrtle	25	20	Deciduous	M	Yes	Yes	Yes	
3'+	Magnolia grandiflora 'Little Gem'	Little Gem Magnolia	20	15	Evergreen	M	Yes	Yes	Yes	
3'+	Rhus lancea	African Sumac	25	20	Evergreen	L	Yes	No	No	
4'+	Arbutus unedo	Strawberry Tree	20	20	Evergreen	L	Yes	Yes	Yes	
4'+	Cassia leptophylla	Gold Medallion tree	25	20	Evergreen	M	Yes	Yes	No	
4'+	Geijera parvifolia	Australian Willow	40	25	Evergreen	L	Yes	Yes	Yes	
4'+	Spathodea campanulata	African Tulip Tree	30	20	Evergreen	M	Yes	Yes	No	
5'+	Agonis flexuosa	Peppermint Tree	35	35	Evergreen	L	Yes	No	Yes	
5'+	Albizia julibrissin	Silk Tree	40	40	Deciduous	M	Yes	Yes	No	
5'+	Bauhinia variegata (purpurea)	Purple Orchid Tree	30	20	Deciduous	M	Yes	Yes	No	
5'+	Brachychiton acerifolius	Flame Tree	40	30	Evergreen	L	Yes	Yes	No	
5'+	Calodendron capense	Cape Chestnut	40	40	Deciduous	M	Yes	No	No	
5'+	Fraxinus oxycarpa 'Raywood'	Raywood Ash	35	30	Deciduous	M	Yes	Yes	Yes	
5'+	Ginkgo biloba 'Fruitless'	Maidenhair Tree	60	40	Deciduous	M	Yes	Yes	Yes	
5'+	Jacaranda mimosifolia	Jacaranda	40	50	Deciduous	M	Yes	Yes	Yes	
5'+	Magnolia grandiflora 'Russett'	Russett Magnolia	20	15	Evergreen	M	Yes	Yes	Yes	
5'+	Magnolia grandiflora 'Saint Mary'	Saint Mary Magnolia	25	20	Evergreen	M	Yes	Yes	Yes	
5'+	Magnolia grandiflora 'Samuel Sommer'	Samuel Sommer Magnolia	40	30	Evergreen	M	Yes	Yes	Yes	
5'+	Magnolia grandiflora 'Majestic Beauty'	Majestic Beauty Magnolia	40	20	Evergreen	M	Yes	Yes	Yes	
5'+	Melaleuca linnarfolia	Flaxleaf Paperbark	30	30	Evergreen	L	Yes	No	No	
5'+	Melaleuca quinquinerva (viridifolia)	Cajeput Tree	40	20	Evergreen	M	Yes	Yes	Yes	
5'+	Metrosideros excelsa	New Zealand Christmas Tree	40	40	Evergreen	M	Yes	No	No	
5'+	Pistachia chinensis	Chinese Pistache	40	40	Deciduous	M	Yes	Yes	Yes	
5'+	Prunus ilicifolia subsp. lyonii	Catalina Cherry	30	30	Evergreen	VL	No	No	No	Available-15 Gal
5'+	Quercus douglasii	Blue Oak	50	50	Deciduous	VL	Yes	Yes	No	
5'+	Quercus ilex	Holly Oak	50	50	Evergreen	L	Yes	Yes	Yes	
5'+	Tabebuia avellanedae(lpe)	Pink Trumpet Tree	30	30	Deciduous	M	Yes	Yes	Yes	
8'+	Brachychiton discolor	Pink Flame Tree	70	50	Semi	L	No	No	No	Available-15 Gal
8'+	Cinnamomum camphora	Camphor Tree	50	60	Evergreen	M	Yes	Yes	Yes	
8'+	Fraxinus velutina 'Modesto'	Modesto Ash	50	30	Deciduous	M	Yes	Yes	Yes	
8'+	Lophostemon confertus	Brisbana Box	60	40	Evergreen	M	Yes	Yes	Yes	
8'+	Platanus acerifolia	London Plane Tree	70	40	Deciduous	M	Yes	Yes	No	
8'+	Podocarpus gracilior (Afrocarpus)	Fern Pine	60	60	Evergreen		Yes	Yes	Yes	
8'+	Schinus molle	California Pepper	40	50	Evergreen	VL	Yes	Yes	Yes	
8'+	Tipuana tipu	Tipu Tree	50	60	Semi	M	Yes	Yes	Yes	
8'+	Ulmus parvifolia	"Drake" Chinese Elm	60	60	Semi	M	Yes	Yes	Yes	

* Water requirements per WUCOLS (Water Use Classifications of Landscape Species) by California Coastal Commission, August 2000 1



NEWPORT BEACH

PB&R Commission Staff Report

Agenda Item _____
June 4, 2019

TO: Parks, Beaches & Recreation Commission

FROM: Public Works Department / Municipal Operations Division
Micah Martin, Deputy Public Works Director, Municipal Operations
949 644-3055, mmartin@newportbeachca.gov

TITLE: Appeal of Denial for Special Tree Removal Request – 1710 Candlestick Lane

RECOMMENDATION:

Staff recommends that PB&R Commission consider the appeal of staff's denial of the removal of a Special City Lemon-scented Gum tree located in front of 1710 Candlestick Lane.

DISCUSSION:

City Council Policy G-1, Retention, Removal, and Maintenance of City Trees, allows the PB&R Commission to act upon an appeal to remove Special City trees. On April 18, 2018, property owner, John Devine, contacted the City to request the removal of a Lemon-scented Gum tree in front of 1710 Candlestick Lane due to messiness caused by sap exuding from the tree.

The City Arborist inspected the tree on May 2, 2019 and determined the Gum tree does not meet the criteria for removal referenced in the G-1 Policy. The sap is likely due to increased rain and irrigation leading to rapid growth. Historically, the tree has caused damage to City curb, gutter and sidewalk. However, these infrastructures have either been mitigated or replaced. Mr. Devine was informed and advised of the City Arborist's findings, and that he could appeal staff's decision to the PB&R Commission. If approved, Mr. Devine has voluntarily agreed to fund the removal and the replacement with a 60-inch box tree from the Parkway Tree Designation List. Attached are the Tree Removal Review and Tree Inspection Report.

NOTICING:

John Devine, Council Member Duffy Duffield, and Mariners Community Association have received a copy of this report. Additionally, surrounding property owners, map attached, were notified via postcard of the Commission Meeting related to this appeal of staff's denial of the removal request. The tree was posted with the attached poster regarding the removal request.

Attachments:

- A. Tree Removal Application
- B. Tree Removal Review and Tree Inspection Reports
- C. Map highlighting surrounding property owners notified of the Commission Meeting
- D. Postcard Notification
- E. Tree Poster



CITY OF NEWPORT BEACH Municipal Operations Department

Tree Removal or Reforestation Application

Per City Council Policy G-1 (Retention, Removal, and Maintenance of City Trees), I am **requesting** a tree removal(s) to be reviewed by staff and submitted to either the Parks, Beaches, and Recreation Commission for consideration at a future meeting or the appropriate City approving authority. I am aware that Commission meetings are regularly held on the first Tuesday of each month (except for holidays) at 6:00 p.m. in the Council Chambers.

One tree; Corymba Citriodora
Quantity and specie(s), (if known) of tree(s).

1710 Candlestick Ln., Newport Beach, CA 92660
Location of tree(s)

Please be as specific as possible

Requestor

- Property Owner
- Community Association
- Other

Address/ Phone (Daytime) / Email

280 Newport Center Drive Ste 260
Newport Beach, CA 92660
657-203-9239

Signature:

Date: April 18, 2019

Print Name: JOHN DEVINE

REFORESTATION REQUESTS: Please proceed to Section B.

Section A. For Tree Removal Requests Only

Removal Criteria (Check one or more)

Please provide copies of photos, bills, documents or any other related material that will verify the checked items.

- Proven and repeated history of **damaging** public or *private, sewers, water mains, roadways, sidewalks, curbs, walls, fences, underground utilities or foundations. (*Greater than \$500)
- Repeated history of significant interference** with street or sidewalk drainage.
- Dying** Has no prospect of recovery.
- Diseased** Cannot be cured by current arboricultural methods. In advanced state of decline with no prospect of recovery.
- Hazardous** Defective, potential to fail, could cause damage to persons/property upon failure. Assessment by City Arborist will identify structural defects, parts likely to fail, targets-if fails, procedures and actions to abate.
- Beautification Project** In conjunction with a City Council-approved City, commercial, neighborhood, or community association beautification program.

Section B. For Reforestation Requests Only

Reforestation is the concept of systematically replacing Problem or All Other Trees which are creating hardscape and/or view problems and cannot be properly trimmed, pruned or modified to alleviate the problem(s) they create, or those which have reached their full life, and are declining in health, or are simply the wrong species of tree(s) for the planted location.

As initiated by:

- Property Owner
- Community Association
- Other _____

Check all items applicable:

- Tree(s) causing curb, gutter, sidewalk or underground utilities damage.
- Wrong tree species for location
- View encroachment
- Area has clearly defined contiguous boundaries that include the tree(s) proposed.
- Residential communities, neighborhoods, or business organizations who apply for reforestation must submit a petition signed by a minimum of 60% of the property owners within the area defined.
- Areas represented by a legally established community association, may submit a resolution of the Board of Directors formally requesting a reforestation.
- Individual property owners must submit a petition signed by a minimum of 60% of a maximum of 30 private property owners (up to 15 contiguous private properties on both sides of the street up to 500' in either direction from the location of the proposed reforestation site) as well as the endorsement of the appropriate homeowners' association, if applicable.

*A request for reforestation requires a written agreement submitted to the Parks, Beaches, and Recreation Commission by the petitioning sponsor (Individual private property owner(s) or group) to pay 100% of the costs of the removal and replacement of the public tree(s) in advance of any removal activity. The actual removal and replanting will be coordinated by the Municipal Operations Department using the City tree maintenance contractor.

*There shall be a minimum of a one-for-one replacement of all tree(s) removed in reforestation projects. Replacement tree(s) shall be a minimum size of 36" boxed tree and cost ranges from \$706 to \$910, unless the parkway space will not accommodate a 36" boxed tree or a tree cannot be planted due to planting restrictions contained in City Council Policy G-6.

This form does not replace the requirements of any of the City tree policies. Its use is intended to expedite the tree removal or reforestation requests and to ensure compliance with all City requirements. Please refer to individual City Council Policy G-1 for additional information.

REQUESTOR COMMENTS: The tree adjacent to my property spews large quantities of tar-like resin that prevent people from parking their vehicles near the tree, which is very close to the house's driveway. The resin is extremely sticky and can cause damage to personal property (e.g. ruining car paint)

Removals, except emergency, will be subject to the notification processes, time frames and authority as specified in the City Council G-1 Policy.



Public Works Department/Municipal Operations Division

TREE INSPECTION REPORT

Name: Landscape Division

Location(s) of tree(s): 1710 Candlestick Lane / Front - 2

Request: The property owner is requesting removal of a Special City Lemon-Scented Gum Eucalyptus tree due to messiness caused by sap exuding from the tree.

Botanical/Common Names: Corymbia citriodora / Lemon-Scented Gum Eucalyptus

Designated Street Tree: Corymbia citriodora / Lemon-Scented Gum Eucalyptus

Estimated Trees Value: \$3,260

Damage: N/A

Parkway: Concrete Brick (X) Turf Other

Comments: A field inspection determined that the sap is likely due to increased rain and irrigation leading to rapid growth. As this tree's growth is accelerated, occasionally, the exfoliating bark of the tree separates too quickly, causing cosmetic cracks and sap to exude from these areas. Historically, this tree has caused damage to City curb, gutter and sidewalk. However, these infrastructures have either been mitigated or replaced. The tree does not meet the criteria for removal of Special Trees referenced in the G-1 Policy.

Inspected by: _____


Kevin Pekar, City Arborist

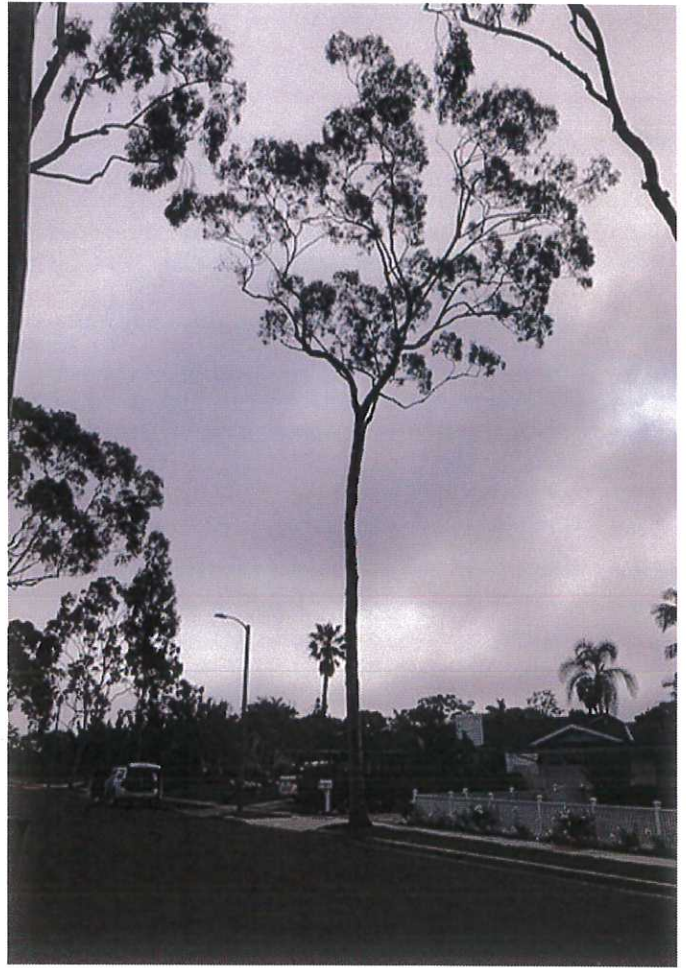
Date: May 2, 2019

Recommendation: Staff recommends the tree be retained and has advised the applicant of the appeal process. The applicant is willing to pay for the removal and replacement with a 48-inch box tree.

Reviewed by: _____


Anthony Petrarca, Acting Landscape Manager

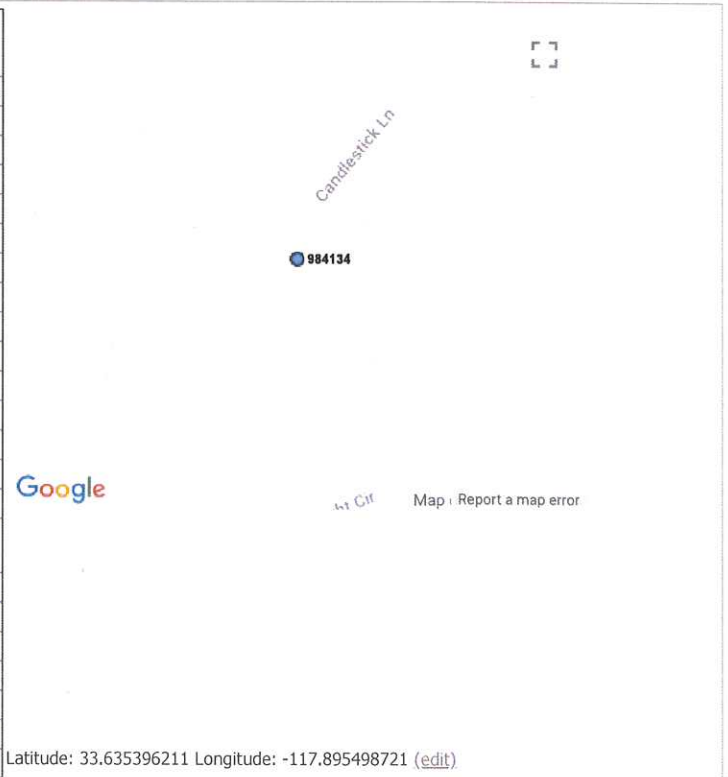
Date: May 2, 2019



Detail Notes Images Documents Observations

Inventory Detail

Tree ID	984134	Old Tag #		Save
District	16			
Area	16			
Address	1710 CANDLESTICK LN			
Side/Site	Front - 2			
Alt Address				
Tree Species	Corymbia citriodora / Eucalyptus - Citriodora			
Common Name	Lemon-Scented Gum			
Size	19-24			
Height	45-60			
DBH				
Condition	FAIR			
Grow Space				
Space Size				
Overhead Utility				
Sidewalk Damage				
Note:				
Irrigation Flag	Yes			No
Monitor Flag	Yes			No
Service Type	Grid Pruning			
Season	JAN/APR			
Estimated Value	\$3,260.00			
Next Date				



Service History							New
Scope	WO Ref #	Description	Who	Service Date	Invoice Date	Service	Price
Invoiced	33166	2018 Grid 16 - Westcliff (All Trees) - May Progress	GSTS	5/17/18	5/31/18	Grid Pruning	51.33
Invoiced	25153	2016 - Grid 16 (Westcliff) - Broadlefs	GSTS	5/20/16	5/26/16	Grid Pruning	49.43
Invoiced	18302	2014 - West Cliff Revised	GSTS	5/05/14	5/31/14	Grid Pruning	48.00
Work History			WCA		1/26/10	Other	0.00
Work History			WCA		5/28/08	Other	0.00
Work History			WCA		10/26/05	Other	0.00
Work History			WCA		2/08/02	Other	0.00
Work History			WCA		1/24/00	Other	0.00



1710 Candlestick Ln



City of Newport Beach
GIS Division
May 14, 2019

ATTACHMENT C

**IMPORTANT:
Commission Meeting Notice**

City of Newport Beach
Public Works Department | Municipal Operations Division
100 Civic Center Drive
Newport Beach, CA 92660



**Parks, Beaches, and Recreation Commission
Meeting Notice**

At its June 4, 2019 meeting, the Parks, Beaches, and Recreation Commission will consider the appeal of denial for a Special City tree removal request in front of 1710 Candlestick Lane.

Attendance at the meeting is optional.

DATE: Tuesday, June 4, 2019
TIME: 6:00 p.m.
LOCATION: City Council Chambers
Newport Beach Civic Center
100 Civic Center Drive
Newport Beach, CA 92660

The Agenda Report will be available on the City's website after May 31, 2019: www.newportbeachca.gov. If you have any questions regarding this item, you may contact the Public Works Department, Municipal Operations Division at (949) 644-3055.

CITY OF NEWPORT BEACH

**THE PARKS, BEACHES AND RECREATION COMMISSION
WILL CONSIDER AN APPEAL OF DENIAL OF A TREE
REMOVAL/REFORESTATION REQUEST**



AT THE June 4, 2019 (6:00PM) MEETING

AT THE CIVIC CENTER

COUNCIL CHAMBERS

100 CIVIC CENTER DRIVE

NEWPORT BEACH CA 92660

**FOR ANY QUESTIONS PLEASE CALL
PUBLIC WORKS DEPARTMENT
MUNICIPAL OPERATIONS DIVISION
AT (949) 644-3055**

CITY OF NEWPORT BEACH

**THE PARKS, BEACHES AND RECREATION COMMISSION
WILL CONSIDER AN APPEAL OF DENIAL OF A TREE
REMOVAL/REFORESTATION REQUEST**



AT THE June 4, 2019 (6:00PM) MEETING

AT THE CIVIC CENTER

COUNCIL CHAMBERS

100 CIVIC CENTER DRIVE

NEWPORT BEACH CA 92660

**FOR ANY QUESTIONS PLEASE CALL
PUBLIC WORKS DEPARTMENT
MUNICIPAL OPERATIONS DIVISION
AT (949) 644-3055**