



CITY OF NEWPORT BEACH PARKS, BEACHES AND RECREATION COMMISSION AGENDA

Council Chambers - 100 Civic Center Dr

Tuesday, August 6, 2019 - 6:00 PM

Parks, Beaches and Recreation Commission Members:

Walt Howald, Chair
David Granoff, Vice Chair
Hassan Archer, Commissioner
Diane Daruty, Commissioner
Laird Hayes, Commissioner
Heather Ignatin, Commissioner
Kate Malouf, Commissioner

Staff Members:

Laura Detweiler, Recreation & Senior Services Director
Sean Levin, Recreation & Senior Services Deputy Director
Micah Martin, Deputy Public Works Director
Kevin Pekar, Parks and Landscape Superintendent
Mariah Stinson, Administrative Support Specialist

The Parks, Beaches and Recreation Commission is subject to the Ralph M. Brown Act. Among other things, the Brown Act requires that the Parks, Beaches and Recreation Commission agenda be posted at least seventy-two (72) hours in advance of each regular meeting and that the public be allowed to comment on agenda items before the Commission and items not on the agenda but are within the subject matter jurisdiction of the Parks, Beaches and Recreation Commission. The Chair may limit public comments to a reasonable amount of time, generally three (3) minutes per person.

It is the intention of the City of Newport Beach to comply with the Americans with Disabilities Act ("ADA") The City of Newport Beach's goal is to comply with the Americans with Disabilities Act (ADA) in all respects. If, as an attendee or a participant at this meeting, you will need special assistance beyond what is normally provided, we will attempt to accommodate you in every reasonable manner. Please contact the Recreation Department at least forty-eight (48) hours prior to the meeting to inform us of your particular needs and to determine if accommodation is feasible at (949) 644-3158 or recreation@newportbeachca.gov.

NOTICE REGARDING PRESENTATIONS REQUIRING USE OF CITY EQUIPMENT

Any presentation requiring the use of the City of Newport Beach's equipment must be submitted to the Recreation Department 24 hours prior to the scheduled meeting.

I. CALL MEETING TO ORDER

II. ROLL CALL

III. NOTICE TO THE PUBLIC

The City provides a yellow sign-in card to assist in the preparation of the minutes. The completion of the card is not required in order to address the PB&R Commission. If the optional sign-in card has been completed, it should be placed in the box provided at the podium.

The PB&R Commission of Newport Beach welcomes and encourages community participation. Public comments are generally limited to three (3) minutes per person to allow everyone to speak. Written comments are encouraged as well. The Commission has the discretion to extend or shorten the time limit on agenda or non-agenda items. As a courtesy, please turn cell phones off or set them in the silent mode.

IV. ELECTIONS

- Chair
- Vice Chair

V. PUBLIC COMMENTS ON CONSENT CALENDAR

This is the time in which PB&R Commissioners may pull items from the CONSENT CALENDAR for discussion (Items V-A thru V-E). Public comments are also invited on Consent Calendar items. Speakers must limit comments to three (3) minutes. Before speaking, please state your name for the record. If any item is removed from the Consent Calendar by a PB&R Commissioner, members of the public are invited to speak on each item for up to three (3) minutes per item.

All matters listed under CONSENT CALENDAR are considered to be routine and will all be enacted by one motion in the form listed below. Commissioners have received detailed staff reports on each of the items recommending an action. There will be no separate discussion of these items prior to the time the PB&R Commission votes on the motion unless a Commissioner requests specific items to be discussed and/or removed from the Consent Calendar for separate action.

V. CONSENT CALENDAR

A. Minutes of the Parks, Beaches & Recreation Commission Meeting of June 4, 2019

Waive reading of subject minutes, approve and order filed.

[06-04-2019 PBR MINUTES](#)

B. Parks, Trees & Beach Maintenance Divisions Activities Report

Receive/File Activity Report of past and upcoming projects and events.

[MOD Activity Report](#)

C. RSS Activity Report

Receive/File Activity Report of past and upcoming projects and events.

[RSS Activity Report](#)

D. Request by Newport Mesa Soccer Club (NMSC) for Temporary Lights at Bonita Canyon Sports Park (BCSP) Field #5

Staff recommends that the Parks, Beaches & Recreation Commission approve the request from the Newport Mesa Soccer Club (NMSC) to use temporary lights at Bonita Canyon Sports Park field #5 from September 24 to November 16, 2019 and January 7 to March 15, 2020 from dusk to 7:55 p.m.

[Staff Report](#)

E. Follow-Up of the Appeal of Denial for Special Tree Removal- 1710 Candlestick Lane

Staff recommends that the Parks, Beaches & Recreation Commission approve the 60-inch box (red-flowered) Crape Myrtle tree replacement species of the approved Special City Lemon-scented Gum Tree removal in front of 1710 Candlestick Lane.

[Staff Report](#)

[Attachment A- Crape Myrtle](#)

VI. CURRENT BUSINESS

A. Irvine Ranch Conservancy- Program Overview

Presented by Justin Schmillen.

[Presentation](#)

B. Lower Sunset View Park Conceptual Design

Review the Lower Sunset View Park conceptual design and forward recommendations to City Council for final approval.

[Staff Report](#)

[Attachment A - Location Map](#)

[Attachment B - Conceptual Design](#)

[Attachment C - Community Outreach Summary](#)

C. City Council Policy B-17- Changes as Directed by the City Council

Receive and comment.

[Staff Report](#)

[Attachment A- Final](#)

[Attachment B - Redline](#)

D. Continuation of Appeal of Denial for Tree Removal- 720 Jasmine Avenue

Staff recommends that the Parks, Beaches & Recreation Commission consider the appeal from John Buckingham (resident at 927 Gardenia Way) of staff's denial of the removal of a City Sugar Gum tree in front of 720 Jasmine Avenue.

[Staff Report](#)

[Attachment A - Tree Removal Application](#)

[Attachment B - Tree Removal Review and Tree Inspection Reports](#)

[Correspondence](#)

E. City Council Policy G-1- Regarding Tree Removal Noticing Procedures

Presentation by Kevin Pekar.

[G-1 Noticing Presentation](#)

F. Fiscal Year 2019-20 Ad Hoc Committee/Liaison Appointments

Discuss, reaffirm, appoint or sunset the following FY 2019-20 Ad Hoc Committee appointments:

- Big Canyon- Sunset
- Community Service Award- Reaffirm & Appoint
- Grant Howald Park Rehabilitation- Sunset
- Sunset View Park- Reaffirm
- Youth Sports Commission Liaison- Reaffirm & Appoint
- Donations Program (City Council Policy B-17)- Sunset

[Staff Report](#)

VII. ANNOUNCEMENTS/FUTURE AGENDA ITEMS

PB&R Commission / staff announcements / Ad Hoc Committee updates or matters which Commissioners would like placed on future agendas for further discussion.

VIII. PUBLIC COMMENTS ON NON-AGENDA ITEMS

Public comments are invited on non-agenda items generally considered to be within the subject matter jurisdiction of the PB&R Commission. Speakers must limit comments to three (3) minutes. Before speaking, we invite, but do not require, you to state your name for the record.

IX. ADJOURNMENT

CITY OF NEWPORT BEACH

Parks, Beaches & Recreation Commission Regular Meeting June 4, 2019 – 6:00 PM

I. CONVENE MEETING OF THE PARKS BEACHES & RECREATION COMMISSION TO ORDER – 6:00 PM

II. ROLL CALL

Present: Walt Howald, Chair
David Granoff, Vice Chair
Diane Daruty, Commissioner
Laird Hayes, Commissioner
Heather Ignatin, Commissioner

Excused: Hassan Archer, Commissioner
Roy Englebrecht, Commissioner

Staff: Laura Detweiler, Recreation & Senior Services Director
Sean Levin, Recreation & Senior Deputy Director
Micah Martin, Deputy Public Works Director
Kevin Pekar, Parks and Landscape Superintendent
Mariah Stinson, Administrative Support Specialist

III. NOTICE TO THE PUBLIC

IV. PUBLIC COMMENTS ON CONSENT CALENDAR – None.

V. CONSENT CALENDAR

A. **Minutes of the May 7, 2019, PB&R Commission Meeting.**

Recommendation: Waive reading of subject minutes, approve and order filed.

B. **Parks, Trees & Beach Maintenance Divisions Activity Report.**

Recommendation: Receive/file Activity Report.

C. **RSS Activity Report.**

Recommendation: Receive/file Activity Report of past and upcoming projects and events.

Motion by Chair Howald; seconded by Vice Chair Granoff, accept items V-A through V-C of the Consent Calendar. Motion carried by unanimous vote.

VI. CURRENT BUSINESS

A. **Boys and Girls Club – Program Overview**

Presented by Jonathan Harmon

Manager Harmon introduced Robert Santana and Travis Whitten from the Boys & Girls Club.

Robert Santana, CEO of the Boys & Girls Club of Central Orange Coast, gave an overview of the vital relationship that the Boys & Girls Club have with the City, school partnerships, the mission of the club, programs that were provided, and the construction timeline for the upgrades taking place at the facilities.

The Commission asked for more information about the Boys & Girls Club. Mr. Santana stated that there was only one club located in Newport Beach with the majority of the kids coming from Eastbluff and Lincoln Elementary, the club planned to expand to tweens and teens ages, and they were exploring a partnership with Newport Harbor High School. He expressed future planned goals, further expansion of the program, and how many kids attended the programs.

Chair Howald suggested the group explore a partnership with other youth serving organizations in the community.

B. Appeal of Denial for Tree Removal Request – 720 Jasmine Avenue

Staff recommends that the PB&R Commission consider the appeal from John Buckingham (resident at 927 Gardenia Way) of staff's denial of the removal of a City Sugar Gum tree in front of 720 Jasmine Avenue.

Director Martin explained that the HOA community was requesting a continuance of this item to a future date. Staff had granted that request provided that the Commission supported it.

Chair Howald opened the public comment; seeing none the public comment was closed.

Motion by Commissioner Hayes; seconded by Commissioner Ignatin, staff recommends that the PB&R Commission continue the appeal from John Buckingham (resident at 927 Gardenia Way) of staff's denial of the removal of a City Sugar Gum tree in front of 720 Jasmine Avenue. The motion carried by unanimous vote.

C. City Council Policy G-6 – Maintenance and Planting of Parkway Trees Exhibits

Staff recommends that PB&R Commission review the proposed City Council Policy G-6 Exhibits, which include revisions to the Parkway Tree Designation List, and the additions from the Eastbluff Homeowners Community Association to the Street Tree Designation List, for City Council review and approval.

Superintendent Pekar explained what the Parkway Tree Designation List was, which trees were removed and added, new tree names, and which trees were moved to different categories. He reviewed the requested list of specific trees the Eastbluff community wished to see in Eastbluff with the Commission.

Chair Howald opened the public comment.

Jim Mosher voiced his concern that the tree lists were not enforced and that many of the trees located within parkways were trees not listed in the policy. He wondered if the City should not have a general parkway list and a specific neighbor list.

Chair Howald articulated that HOA communities were allowed to establish a tree policy for their area if it was compatible with the City's basic policy.

Ron Rubino, President of the Homeowners Association for Eastbluff, articulated that the specified trees on their list were trees that needed little to no maintenance and the tree's overall height would not affect resident's views.

Superintendent Pekar and the Commission discussed how staff handled neighborhoods that did not have HOA's, tree height in older neighborhoods, and if the Commission should consider neighbor's views when recommending 48" box trees for reforestation applications.

Director Martin expressed that other Council policies had issues that staff was aware of and are planning to bring revisions on those policies in the near future.

Chair Howald closed the public comment.

Motion by Chairperson Howald, seconded by Vice Chair Granoff, approve the proposed City Council Policy G - 6 Exhibits, which include revisions to the Parkway Tree Designation List, and the additions from the East Bluff Homeowners Community Association to the Street Tree Designation List, for City Council review and approval. The motion carried by unanimous vote.

D. Appeal of Denial for Special Tree Removal – 1710 Candlestick Lane

Staff recommends that PB&R Commission consider the appeal from John Devine, property owner, of staff's denial of the removal of a Special City Lemon-scented Gum tree in front of 1710 Candlestick Lane.

Superintendent Pekar stated that the applicant wished the tree to be removed due to excessive sap dripping and messiness of the tree. The tree was healthy and did not qualify for a Special Tree Removal. If the tree appeal was granted, the applicant would replace the tree with a 60" box tree of their choosing.

Discussion commenced between staff and the Commission regarding the type of species that would replace the tree, cost, and if the existing tree could be planted somewhere else.

Chair Howald open the public comment.

Rudy Procheeko provided images of the excessive sap the tree produced to the Commission.

John Devine declared that he was willing to pay for the removal of the existing tree and the installation of the new tree. He was not supportive of planting another Lemon-scented Gum tree.

Jim Mosher suggested making the new tree the same species as the existing tree in order to keep the same look along the street. He was concerned that there was no petition process of the neighbors to know if the neighbors were ok with a change.

Chair Howald stated that staff and the Commission did not require a petition of the neighbors on that type of reforestation.

Chair Howald closed the public comment.

Superintendent Pekar answered questions regarding the process of removing a tree, how long the whole process would be if the Commission approved the appeal and discussion of possible motions.

Motion by Vice Chair Granoff seconded by Commissioner Hayes, approve the appeal from John Devine, property owner, of staff's denial of the removal of a Special City Lemon-scented Gum Tree and return to the commission for approval of replacement tree.

VII. COMMISSION ANNOUNCEMENTS/FUTURE AGENDA ITEMS

PB&R Commission / staff announcements/ Ad Hoc Committee updates or matters which Commissioner members would like placed on future agendas for further discussion (this is a non-discussion item).

Director Detweiler gave an update on how the Unity Torch Walk went, when car washes would be taking place to support 1/1 Marines Foundation, 4th of July celebrations, summer camps, and how staff was looking to reduce paper.

Chair Howald requested to receive hard copies of the Activity Report that he would distribute at OASIS and the CdmRA.

Director Martin announced that staff was recruiting for the recently vacant City Arborist position, City Council had made some suggestions for the B-17 Policy, and that was to be brought to the Commission for another review.

VIII. PUBLIC COMMENTS ON NON-AGENDA ITEMS

Public comments are invited on non-agenda items generally considered to be within the subject matter jurisdiction of the PB&R Commission. Speakers must limit comments to three (3) minutes. Before speaking, we invite, but do not require, you to state your name for the record. The Commission has the discretion to extend or shorten the speakers' time limit on non-agenda items, provided the time limit adjustment is applied equally to all speakers.

Rick Steinhart, resident of Poinsettia Street in Corona Del Mar, wanted to express the request from the neighborhood to keep the heritage trees located in their neighborhood.

He wanted to see that the Special Tree Protection Policy be updated to include larger, old trees.

Chair Howald requested Mr. Steinhart provide images of the trees to staff.

Brian Kingman, 311 Poinsettia owner, provided photos of the tree located in front of his house and the safety hazard that it was causing. He was willing to replace the tree with two new trees.

Kyle Crane, 304 Poinsettia, loved the existing trees. He was not supportive of removing the heritage tree at 311 Poinsettia.

Sherry Steinhart shared her concerns about the process of notification for when a tree is being removed from the neighborhoods, how staff was not relaying to the Commission the beauty of the large trees, how the Commission was more concerned about finances of removing and replacing a tree, and the opinions of neighbors when a large tree was to be removed.

Chair Howald requested that notification process of neighbors be agendized for the August 2019 meeting.

Director Martin stated that 311 Poinsettia reforestation applications are scheduled for the October 2019 meeting.

Jim Mosher suggested that the G-6 Policy include language that a petition of neighbors needed to happen when it came to the reforestation of special City trees. He did not support having a firework display for the 4th of July due to environmental concerns.

IX. ADJOURNMENT IN MEMORY OF DAYLE LUSK – 8:37 p.m.

Motion by Chair Howald, seconded by Commissioner Hayes, to IX. ADJOURNMENT. The motion carried by unanimous vote.

Submitted by: _____
Mariah Stinson, Admin Assistant

Approved by: _____
Walt Howald, Chair



NEWPORT BEACH

PB&R Commission Staff Report

Agenda Item **V-B**
August 6, 2019

TO: Parks, Beaches & Recreation Commission

FROM: Public Works Department / Municipal Operations Division
Micah Martin, Deputy Public Works Director
949 644-3055, mmartin@newportbeachca.gov

TITLE: Parks and Trees, and Beach Maintenance Divisions Activities Report

PARK MAINTENANCE

Integrated Pest Management

Earlier this summer, a bark beetle infestation at Bonita Creek Park was discovered. As part of the City's Integrated Pest Management (IPM), the Pine trees at this location was treated with a bark beetle repellent infused with verbenone, which is a biological method.



Verbenone is an anti-aggregation pheromone that is naturally produced by several species of bark beetles to signal approaching beetles that the infested tree is too overcrowded to serve as a suitable host. The repellent is applied directly to the trees and is safe for humans, pets and the environment.

Eastbluff Park Urban Forest Event

On June 9, as part of Stanbridge University's commitment for community outreach, volunteers and City staff recently partnered for a planting event within Eastbluff Park. Approximately 80 volunteers, with shovels in hand, planted one hundred California native trees on the southernmost slope abutting Newport Beach's Back Bay. Tree species planted include Toyon, Catalina Cherry, Coast Live Oak and Valley Oak trees. These trees will serve to beautify the park and provide habitat for birds and other wildlife. In addition, this event will enhance the City's overall urban forest. This event was extremely gratifying and reinforced the already existing sense of community and pride in the City's unique amenities.



FIELD MAINTENANCE

Summer Schedule

The Beach Maintenance Crew has switched to their Summer Schedule, 5:00 a.m. start time, in order to get a head start before the crowds arrive. As part of their daily routine, litter is picked up and fire rings are cleaned and maintained. Beach trashcans are emptied five days a week, and the beach is cleaned six days a week. Street ends, piers, and boardwalk trashcans are emptied daily by our refuse contractor CR&R. To help keep our team fully staffed, temporary laborers assist our crew on weekend shifts. We look forward to an eventful summer with our residents and visitors.

Fourth Preparations and Clean-up



The 4th of July is one of the busiest holidays for our Public Works crews. Approximately 200 temporary regulatory signs were installed by the Field Maintenance crews, in coordination with the Police Department, throughout the City. The signage includes restrictions on parking and fireworks, safety enhancements, and road closures. Porta potties were ordered and delivered at the 38th Street and West Cliff Parks. At the Channel and Mariners Parks, crews power-washed walls and structures, raked out and added fresh sand, replaced old trash cans, and detailed planters.

Forty staff and crewmembers from MOD and Storm Drain Crews came in at 4:30 AM on the morning of the fifth to bring our streets, parks, piers, parking lots, and beaches back to normal. By 9:30 AM, beach trashcans were emptied, beach area litter were picked, and fire rings were extinguished and debris removed. All parking lots were swept clean and ready for the area visitors. In total over 17 tons of trash were removed, which is twice the average of daily pick up. All the barricades from the day before were picked up. A big thank you to our crews who worked in the preparation and clean up to ensure that the City continues to be a popular destination for visitors and still rated as one of the nicest coastlines to visit in California.

TREES MAINTENANCE

The City tree maintenance contractor Great Scott Tree Service trimmed trees in Cameo Shores and Highlands, Newport Heights, and Buffalo Hills, and responded to tree-related emergencies.

One dead Special City Donated Oak tree was removed at Castaways Park with a replacement scheduled for planting. One severely declining Special City Lemon-Scented Gum tree on Marine Avenue is scheduled for removal and replacement in early September.

Month of:	# of Trees Trimmed:	# of Trees Removed:	# of Trees Removed Because a Problem Tree:	# of Trees Planted:
MAY	1960	48	0	77

Prepared by:
Kevin Pekar, Landscape Manager
Parks and Trees Division

John Salazar, Manager
Field Maintenance Division



CITY OF

NEWPORT BEACH

Recreation & Senior Services Department Monthly Activities Report



To: PB&R Commission
From: Laura Detweiler, RSS Director
Sean Levin, RSS Deputy Director
Celeste Jardine-Haug, Senior Services Manager

New Playgrounds at Eastbluff and Channel Place Parks

Outdated play structures and safety surfacing were replaced with attractive and inclusive structures in June. Eastbluff playground improvements include shade cool toppers, additional ADA play surfacing, slides and climbers for 2-5 year olds and the Gemini sidewinder double slide. Based on feedback from local residents, Channel Place playground was outfitted with innovative, gyroscopic climbing structures. These unique structures promote unscripted play routes and limitless entry/exit points, maximizing a child's sense of adventure and imagination. After the project was completed, families were invited for refreshments as a thank you for their involvement.





4th of July is for Families

The ninth annual 4th of July is for Families event in West Newport Beach was a great success. The event started at 36th Street with a bike parade down Balboa Blvd to Channel Place Park. In attendance were Cub Scout Packs, who lead the parade with their flag holders with Mayor Diane Dixon, PB&R Commissioner Heather Ignatin, the Lido Fire Engine, antique Police Car with committee members, Police Chief Lewis and family, and approximately 700 participants.

Once the participants arrived at the park, the festival began with carnival games, bounce houses, giant slides, dunk tank, face painters, game master, and crafts. Additionally, there were delicious food and coffee options provided by our sponsors Chronic Taco and Starbucks. We would also like to thank sponsors, Nicolai Glazer Real Estate Group, Hoag Hospital, BW Realty, West Newport Beach Association, and Balport Grocery for your support of this great event. Mayor Dixon, Mayor Pro Tem O'Neill, Council Member Muldoon and PBR Commissioner Laird Hayes participated in the festivities.



Mariners 4th of July Celebration

Over 3,000 people enjoyed the 47th Annual Mariner's Park Independence Day Parade & Celebration on a lovely and warm summer day. This event is a partnership between a team of volunteers from the Mariners Elementary School Foundation and the City of Newport Beach. Locals biked, danced and marched their way down the street and poured into Mariner's Park for the day's festivities. Once there, they spent the afternoon hanging with family and friends while eating food, listening to music, and playing games. Mayor Dixon, Mayor Pro Tem Will O'Neill, Council Member Muldoon and PBR Commissioner Laird Hayes participated in the festivities.



Lego Movie at Cliff Drive Park

Movie in the Park season is in full swing! Lego Movie 2 played at Cliff Drive Park on Friday July 19th and was well attended by families and friends. The event featured crafts and games for kids, free popcorn and candy, and of course our gigantic inflatable movie screen at sundown. Cliff Drive Park was covered in lawn chairs and blankets for another movie under the stars!



OASIS Activities

Save The Dates:

Rummage Sale – October 4 & 5

Health & Resources Fairs – October 19

OASIS 9th Annual Talent Show

Wednesday, August 21, 2:00 p.m., OASIS Event Center, FREE

Join us for our 9th annual OASIS Talent Show and enjoy a variety of acts and performances. Singers, dancers, comedy acts, magicians... you never know what talents our seniors will dazzle with! Free event. All are welcome.

FBI Special Agent Frederick J. Simon Private Sector Coordinator, InfraGard

Thursday, August 22, 11:00 a.m. Room 5

Come and hear a presentation on the scope of our local FBI, CIA and police agencies by an FBI Agent with over 20 years of experience in the field. What criminal behavior does each agency pursue and how is this determined? What are the latest scams being used to harm local citizens? Learn the answers to these and more questions!

TNT Lecture: “Teddy Roosevelt in California”

Presented by Chris Epting, author.journalist/TV host

Tuesday, September 17, 6:00 p.m., OASIS Event Center, FREE

In 1903, President Theodore Roosevelt embarked on his first visit to California. Before leaving, he reached out to naturalist John Muir with a special favor: to act as the president’s tour guide in Yosemite. Join author Chris Epting for a presentation on how that fateful three-day trip helped to shape the destiny of Yosemite and the National Park system, including unforgettable new stories, and many rare photos – along with anecdotes about how Muir’s love of plants and flowers also helped shape our nation. Chris will also be signing copies of his book, “Teddy Roosevelt in California”.

American Politics-Fall 2019 Preview

Thursday, September 5, 5pm, Room 1, FREE

Presented by: Led by Joshua Stone, MPP

In this special preview lecture, Joshua Stone, MPP will give a teaser of his upcoming eight-week collegiate level courses exploring a variety of American politics topics: U.S.-China Relations, 20th Century U.S. Foreign Policy, and

the American Presidency. Each course explores topics in depth, giving a rich background and history and incorporating literature, lectures, and group discussions. Course information can be found on page 16 of your OASIS News.

Park Patrol

Requested calls are assigned visits by staff or schedule or phone requests. Customer Contacts are the number of times they stopped and spoke to customers other than requested calls. Due to the timing of the meeting, these monthly summaries will be two months behind (i.e. in June you will receive April summary). During the month of **May/June** Park Patrol had the following number of contacts:

1. PATROL CHECKS

- 263 with Youth Sports Groups
- 1092 Field related issues/checks
- 95 Park/Picnic/reservation issues/checks
- 371 Community Center issues/checks
- 705 Playground checks
- 157 other

2. PUBLIC CONTACTS

- 428 Education
- 63 Alcohol
- 156 Dog related

Written Warnings Issued – 4 (for glass and alcohol violations)

Citations Issued – 9 Total (for parking violations, tent and illegal vendor)

Facility Use

During the period of May 16 – July 15, 2019 were:

- 90 Picnic/Park Area
- 24 Class Rooms
- 36 Fields
- 36 Gym
- 46 Civic Center Community Room
- 44 CYC Facility
- 23 Marina Park Picnic/Park Area
- 35 Marina Park Event Room
- 24 Marina Park Classrooms
- 57 NCCC Gym
- 67 NCCC Classrooms
- 288 OASIS Classrooms
- 110 OASIS Event Center

Special Event Permits (SEP)

Total SEP's processed as of July 15, 2019, there were 145 Special Event Permits processed and issued for the year. Those events of note for period April 15 – July 15, 2019 were:

- **Balboa Island Art Walk: May 19, Balboa Island, Attendance: 400**
- **Hyatt Jazz Fest: May 31 to June 2, 2019, Hyatt Hotel Attendance: 8000**
- **CDM 5k: June 1, 2019, CDM Streets, Attendance: 1700**
- **Newport Harbor Underwater Clean-Up: June 2, 2019, Newport Harbor, Attendance: 200**
- **Bal Island Parade: June 2, 2019, Balboa Island, Attendance: 4000**



Newport Beach THINGS TO DO

RECREATION & SENIOR SERVICES DEPARTMENT

Newport Beach 1/1 Marine Foundation

CARWASH FUNDRAISER

Marines from 1st Battalion/1st Marines will scrub your cars squeaky clean!



SATURDAY

AUGUST 17 | 10 A.M. - 2 P.M.

Shell Gas Station | 1600 Jamboree Road
Newport Beach (corner of San Joaquin Hills Rd.)

SUGGESTED DONATION: \$20
Tax ID: 27-2756685

NEWPORT BEACH 1ST BATTALION
1ST MARINES FOUNDATION
P.O. Box 1216 Newport Beach, CA 92659 • 949-385-1110
info@oneonemarines.com • www.oneonemarines.com



NEWPORT BEACH CITY ARTS COMMISSION PRESENTS

CONCERTS ON THE GREEN

FREE!

Sundays
6-7:30 p.m.

AUG 25 QUEEN NATION
SEPT 15 FLASHBACK HEART ATTACK

Bring blankets, beach chairs and a picnic dinner or purchase food from food trucks on site. NO ALCOHOL.



For more information: newportbeachca.gov/culturalarts
NEWPORT BEACH CIVIC CENTER
100 Civic Center Drive, Newport Beach, CA

AUGUST 2019



LOBSTERFEST AT NEWPORT BEACH

Sunday August 11, 2019
2:00pm - 7:00pm

Newport Beach Civic Center Green
100 Civic Center Drive, Newport Beach, CA 92660

WHOLE MAINE LOBSTER • LIVE ENTERTAINMENT

Hosted by the Lobsterfest Foundation Benefiting



OASIS 9TH ANNUAL NO TALENT SHOW

WEDNESDAY, AUGUST 21 AT 2 P.M.



OASIS SENIOR CENTER - FREE
801 NARCISSUS AVENUE, CDM

Join us for our 9th annual OASIS Talent Show and enjoy a variety of acts and performances. Singers, dancers, comedy acts, magicians...you never know what talents our seniors will dazzle with!

CITY OF NEWPORT BEACH • RECREATION & SENIOR SERVICES



Movie in the Park

FREE Popcorn **FREE** Candy **FREE** Activities **FOOD FOR PURCHASE**

Event starts at 6:30 p.m.

FRIDAY, AUGUST 23

Mary Poppins Returns

Grant Howald Park
3000 5th Ave., Corona del Mar, 92625

For more information, visit newportbeachca.gov/recreation or call 949-644-3151.

Parks Make Life Better!



Recreation & Senior Services Department | 100 Civic Center Drive, Bay E | Newport Beach, CA 92660
p. 949-644-3151 | w. newportbeachca.gov/recreation | e. recreation@newportbeachca.gov

**OASIS UTILIZATION REPORT
 SPRING 2019 (April-May-June - partial)**

PARTICIPANTS ATTENDING **54,988** **CUSTOMERS**

RECREATIONAL CLASSES **22,008** **CUSTOMERS**

FITNESS CENTER **13,640** **CUSTOMERS**

PERSONALIZED SERVICES PROVIDED **5,016** **CUSTOMERS**

Includes:

Blood Pressure	111	Medical Equip Rentals	40
Counseling-Persons	150	Legal Assistance	45
SHARP Program Inquiries	12	All Rentals	66
Employment	25	Senior Assessment(hrs)	74
HICAP	39	Telephone Reassurance	340
Housing Counseling	95		
Information and Referral	3960	Taxes (Seasonal)	59

SENIORS RECEIVING TRANSPORTATION SRVCS **3,365** **RIDERS**

Care-A-Van/Shuttle

CUSTOMERS RECEIVING NOON MEALS @ OASIS **9,452** **MEALS**

*includes meals on wheels

VOLUNTEER SERVICES PROVIDED @ OASIS **8,452** **HOURS**

Includes:

Admin	Kitchen & Home Delivered Meals
Gift Shop	Library
Instructors	Board of Directors
Greeters	Rummage Sale
Travel Office	Casino Night
Special Events/Montly Meeting/Pancake Breakfast	

PARTICIPANTS IN FRIENDS OF OASIS TRAVEL **360** **CUSTOMERS**

Day Trips & Extended Trips

SPECIAL EVENTS/SCREENINGS/LECTURES **1,147** **PERSONS**

Participants in these categories are now tallied in pink sheets.

HOAG Lectures (Various)
 UCI Lectures (Various)
 Presentations (Various)



== CITY OF ==

NEWPORT BEACH

PB&R Commission Staff Report

Item V-D
August 6, 2019

TO: Parks, Beaches & Recreation Commission

PREPARED BY: Justin Schmillen, Recreation Manager
949-644-3160, Jschmillen@newportbeachca.gov

TITLE: Request by Newport Mesa Soccer Club (NMSC) for Temporary Lights at Bonita Canyon Sports Park (BCSP) Field #5

RECOMMENDATION:

Staff recommends the PB&R Commission approve the request from the Newport Mesa Soccer Club (NMSC) to use temporary lights at Bonita Canyon Sports Park (BCSP) field #5 from September 23 to December 5, 2019 and January 13 to March 19, 2020 from dusk to 7:55 p.m.

FUNDING REQUIREMENTS:

No City funding required. All costs associated to be the responsibility of NMSC.

DISCUSSION:

The demand for lighted fields in the City cannot be met with the current supply that is available. There are currently eight (8) lighted fields within the City. Due to shortages in fields with lighting, NMSC was not allocated any lit field space for the upcoming fall season. NMSC is proposing to utilize temporary lights at BCSP field #5 (see Attachment B). NMSC has been granted use of temporary lights at BCSP field #5 over the past twelve years and has complied with all conditions. A layout of the proposed temporary lights is attached (see Attachment C).

NMSC will continue to use the recommended metal halide bulb fixture and is proposing to place five (5) light standards; three (3) portable lights at the East and West ends of the field and two (2) lights on the south side of the field pointing North, away from the Port Street residences. No more than four light standards will be on at one time. This configuration will help NMSC move their practice areas around the field, while maintaining adequate lighting, and reduce wear on the grass.

BACKGROUND:

NMSC is a 501(c)3 club soccer organization that serves the youth in the Newport-Mesa area. Club soccer is an exclusive activity in which the players must be selected based on skill level in order to participate. The organization is in its 15th year of existence and has over 500 girls and boys in the program ranging in ages of 5-16 years old. The Recreation

& Senior Services Department allocates athletic field space according to the Youth Sports Commission (YSC) Member Requirements & Field Allocation & Use Policy. Field use for practice and games is allocated to YSC-Open and YSC-Club Members, City led adult and youth sport programs and other community requests.

NOTICING:

All residents within 300-feet of Bonita Canyon Sports Park field #5 were noticed according to the Brown Act (72 hours in advance of the meeting at which the PB&R Commission considers the item).

Attachments:

- A. Letter from NMSC dated 6/24/19
- B. Example of the Portable Light
- C. Layout of Lights

ATTACHMENT A



June 24, 2019

Mr. Justin Schmillen
Recreation Manager
City of Newport Beach

Dear Mr. Schmillen,

Please accept this letter as a formal request from the Newport Mesa Soccer Club for the use of temporary lighting at **Bonita Canyon Sports Park Field #5** in the City of Newport Beach.

The Newport Mesa Soccer Club is a 501(c)3 non-profit organization that serves children in the Newport-Mesa area. We provide a year-round, athletic, team-orientated experience for the community. Club soccer is often the next step for children who have progressed through AYSO programs and want to continue playing at a highly competitive level through their Jr. and Sr. High School years and possibly in College.

The conditions we propose for our request are as follows:

- **Light fixtures:** Five portable diesel-powered temporary lights (only four will operate at any one time), the type of which deemed acceptable to the City Recreation Department, as in prior years. Operated via security key.
- **Location:** Three portable lights at the ends of the field, positioned so as to not shine at the bordering residences. Two lights on the sideline pointing away from the Port Street residences (as was the layout in 2018).
- **Hours of Operation:** Sept. 23 – Dec. 5, 2019 and Jan. 13 – March 19, 2020 from dusk to 7:55pm, weekdays only. Due to DST, the average daily light usage is projected to be minimal (1-2 hours/night, ending by 7:55pm). Historically, due to rain, we aren't able to operate for 1-3 weeks during this part of the year.
- **Storage & Safety:** During non-operational hours, the lights will be locked and stored in a location acceptable to the Recreation Dept.

This will be our twelfth year to use temporary lights at this field. We believe the City and local residents would agree that we have been good stewards of the City's park. We work diligently with the Recreation staff, Park Patrol and our members to ensure the local residents are not inconvenienced. There just are not enough lighted fields in the city to accommodate our kids. These temporary lights provide a welcome, but less than ideal solution. At this time of the year, it gets dark as early as 4:50pm. Without lights, we would not be able to continue to provide this positive and healthy activity for our local youth. The need for organized and constructive after-school activities for adolescents cannot be over-emphasized. This field is an ideal location for temporary lighting as there are no homes adjacent to the property and a wide greenbelt surrounds the field -- minimizing the impact on the local residents. In addition, we strictly adhere to the approved hours of operation and we work diligently to be good neighbors.

Thank you for your consideration.

Mark Arblaster
President

ATTACHMENT B



ATTACHMENT C





== CITY OF ==
NEWPORT BEACH
PB&R Commission Staff Report

Agenda Item **V-E**
August 6, 2019

TO: Parks, Beaches & Recreation Commission

FROM: Public Works Department / Municipal Operations Division
Micah Martin, Deputy Public Works Director, Municipal Operations
949 644-3055, mmartin@newportbeachca.gov

TITLE: Follow-up: Special Tree Removal Request – 1710 Candlestick Lane

RECOMMENDATION:

Staff recommends that PB&R Commission approve the 60-inch box (red-flowered) Crape Myrtle tree replacement species of the approved Special City Lemon-scented Gum Tree removal in front of 1710 Candlestick Lane.

DISCUSSION:

The June 4, 2019 Commission meeting agenda included a report to consider the appeal of staff's denial of the removal of a Special City Lemon-scented Gum tree located in front of 1710 Candlestick Lane. The Commission approved the appeal of denial.

Applicant and property owner John Devine agreed to assume the costs of the tree removal and replacement with a 60-inch box tree from the Parkway Tree Designation List. Mr. Devine selected the (red-flowered) Crape Myrtle tree.

NOTICING:

John Devine, Council Member Duffy Duffield, and Mariners Community Association have received a copy of this report.

Attachment: Crape Myrtle photo

Crape Myrtle



Irvine Ranch Conservancy & Newport Beach

A Thriving Partnership



Irvine Ranch Conservancy Management Agreement

Since 2008, IRC has partnered with Newport Beach to steward natural resources and provide public access in Buck Gully Reserve. Contract renewed in 2018 to 2028.

IRC built a trail network, created active volunteer corps, managed rare species and habitats, and offered frequent free programs to thousands of residents.

IRC's partnership with Newport Beach is among our oldest and most successful. We look forward to collaborating for years to come.



Community Programs and Visitor Services



IRVINE RANCH
CONSERVANCY

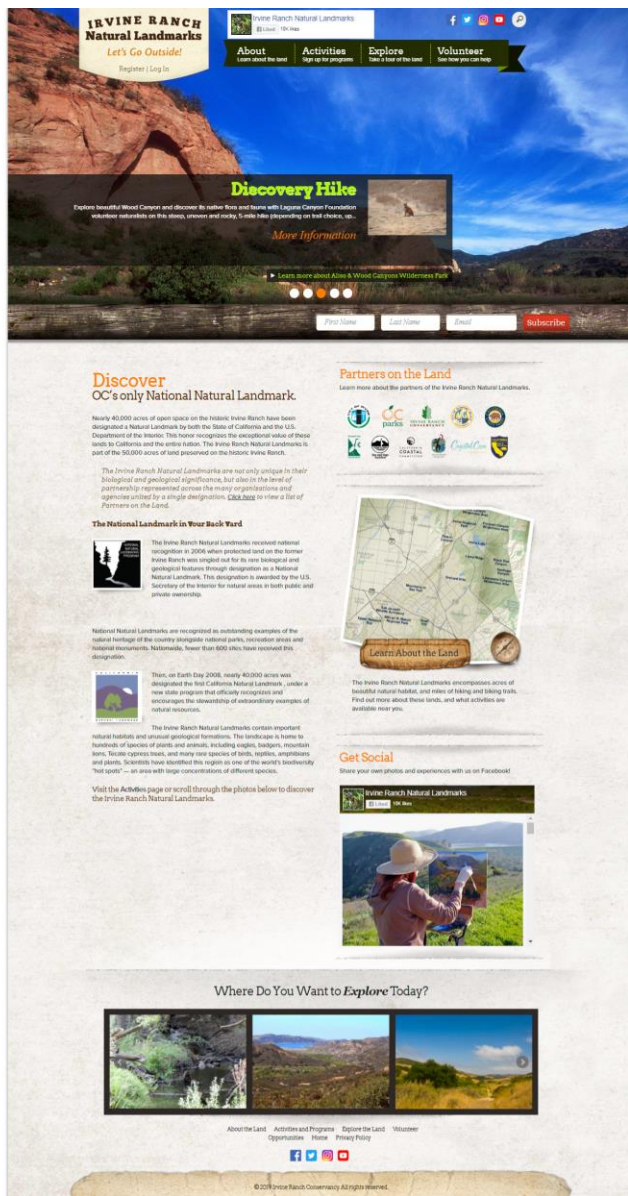




Public Activities

- **Guided programs for more than 2,000 visitors in Buck Gully Reserve**
- **Over 1,000 free interpretive, family, biking, resource stewardship, equestrian, hiking and trail work activities since 2010**
- **Buck Gully annual visitors up 1000% since 2010, to more than 25,000**





LetsGoOutside.org

- LetsGoOutside.org enables easy web-based program registration and land information; more than 34,000 registered accounts; 1.2 million page views annually
- Site doubles as platform to manage volunteers and track hours, training and history
- Volunteers and staff upload Post-Activity Reports to evaluate and optimize public activities
- Volunteers can submit ideas for new Public Activities



Volunteer Participation

- Volunteers increased from 20 in 2010 to 125 in 2018
- Hours donated increased 700%, from 195 in 2010 to 2,727 in 2018
- 13,500 hours donated since 2010
- Value of volunteer hours is \$390,000 (based on \$29.09 volunteer equivalent in California by *independentsector.org*)



Orange County Fire Watch Network

- Deploy during Red Flag events and high-risk days for visual deterrence and early detection
- Fire Watch volunteers donated 11,869 hours across Orange County from 2013-2018
- 362 OCFA-Trained Volunteers





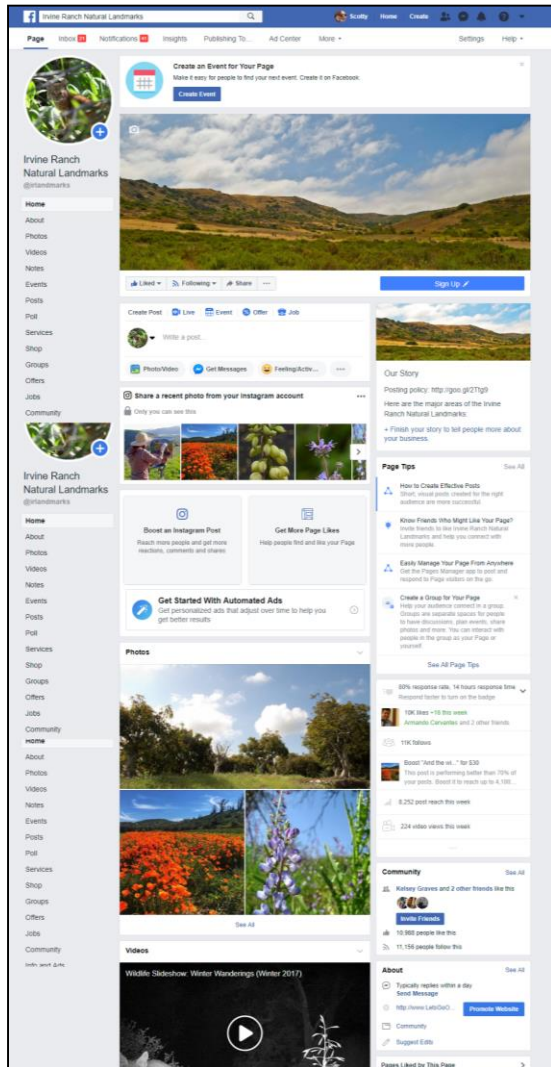
Communications and Public Outreach



IRVINE RANCH
CONSERVANCY



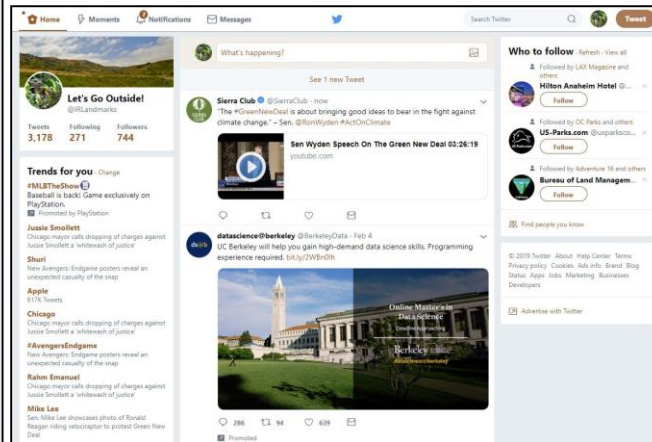
Facebook



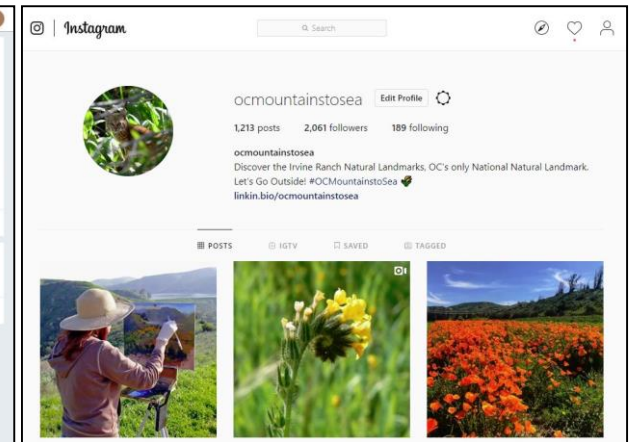
Social Media

- Social Media promotes public activities on LetsGoOutside.org, and creates community of support
- Over 10,900 likes and 11,100 followers on Facebook, 2,054 Instagram followers and 744 Twitter followers


Twitter



Instagram



eNewsletter




**IRVINE RANCH
Natural Landmarks**
*Let's Go Outside!
Activity Update*

BROUGHT TO YOU BY IRVINE RANCH CONSERVANCY

Explore Biodiversity Hotspots on the Irvine Ranch Natural Landmarks

Discover the rare and celebrated natural resources of Orange County by registering for a program on the Landmarks this summer





Buck Gully, Newport Beach

The Irvine Ranch Natural Landmarks are home to biological treasures and unique landscapes that stretch from the mountains to the sea. Nearly 40,000 acres of preserved and protected lands comprise the Landmarks, and include expansive open spaces known as "biodiversity hotspots." Outdoor enthusiasts of all ages can register for a program on the Irvine Ranch Natural Landmarks to connect with the great outdoors while enjoying some of nature's rarest habitats.

What is a biodiversity hotspot?
A biodiversity hotspot is an area with a high percentage of rare plant and wildlife, and the Irvine Ranch Natural Landmarks are home to many. From the coastal treasures of the City of Newport Beach's Crystal Cove and Buck Gully to the breathtaking... [READ MORE](#)

Programs & Activities • May 21 - May 27




**IRVINE RANCH
Natural Landmarks**
*Let's Go Outside!
Activity Update*

BROUGHT TO YOU BY IRVINE RANCH CONSERVANCY

Make a Positive Impact on the Landmarks Through Invasive Plant Removal

Be a helping hand in the fight against invasive weeds by registering for a program on the open spaces


As the weather warms and spring approaches, Orange County residents can look forward to spotting colorful wildflowers across the Irvine Ranch Natural Landmarks. However, not all blooms are welcome on the open spaces. Invasive non-native species prevent native plants and wildlife from thriving and decrease the biodiversity that makes the Landmarks so unique. It's a critical time to remove invasive species that steal nutrients, space, and light from native plant life and threaten local protected wild lands. Nature lovers can join the fight against invasive species by registering for a [stewardship program](#) on the Landmarks!



Native flowers bloom on a hillside in Buck Gully in Newport Beach

Invasive plants and animals have large impacts on the ecosystems they invade as they can become ... [READ MORE](#)

Programs & Activities • February 12 - 18



The activities below are offered by a variety of organizations and their dedicated volunteers.
Pre-registration is required for most programs. • Click "More Info" for details.

- Weekly to 13,000 LetsGoOutside.org users
- Highlights stories about the land and promotes upcoming Public Activities
- All Buck Gully activities listed in addition to other programs in Newport Beach



Media Outreach

OUTDOORS



Hikers on a morning stroll walk along the water near the Peter and Mary Murth Interpretive Center in Newport Beach.

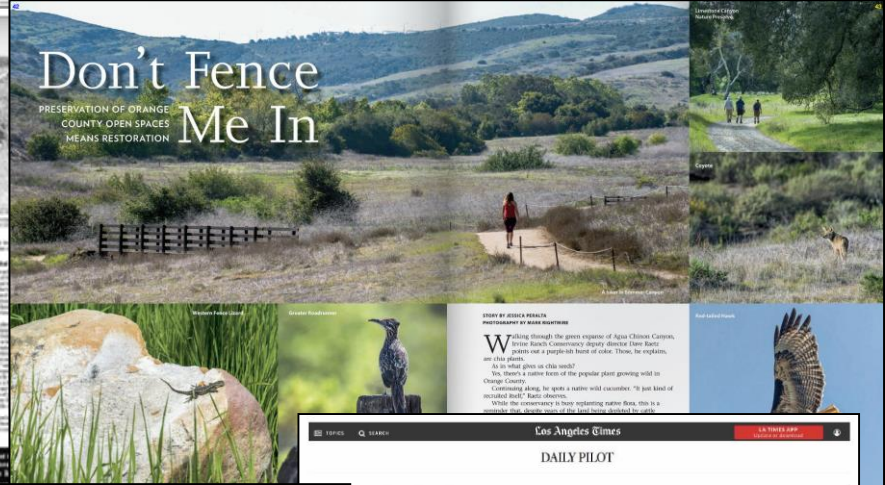
Newport Bay hike will let you tiptoe through the wildflowers

OC Parks guides will lead a group out to the bluffs above Upper Newport Bay for a view of wildflowers. Guides will identify native flowers growing in the nature preserve, and the invasive species that shouldn't be there, and talk about why they harm the

local habitat. The morning walk will be about 2-3 miles over uneven terrain, organizers said. Registration is required at letsgetoutside.org/wildflowers. Rain would cancel the walk.

— Heather McRea

IF YOU GO
When: 10 a.m.-noon
Where: Peter and Mary Murth Interpretive Center, Newport Bay National Marine Sanctuary
Cost: Free, but registration is required
Information: letsgetoutside.org/wildflowers



Natural Resource Management and Monitoring



IRVINE RANCH
CONSERVANCY



Buck Gully Resource Plan

- IRC developed and City adopted Resource & Recreation Management Plan (RRMP) for Buck Gully Reserve
- Contains Policies and Plans for:
 - Community Programs and Visitors
 - Communications and Outreach
 - Natural Resource Management and Monitoring
 - Planning, Infrastructure and Operations
- IRC implements RRMP on behalf of City consistent with state and federal laws and regulations



Natural Resource Management

- **3 acres of habitat restoration in Buck Gully Reserve**
- **Removing 15 different invasive plant species**
- **Conducted 100+ public restoration activities since 2010 including 1,000 donated volunteer hours**
- **Monitored rare plants and animals and habitat**
- **Maintained comprehensive database of natural resources and management information**



Water-Wise Habitat Restoration

- 1.5 acres of non-native iceplant removed - native habitat restored and maintained
- Demonstration area for vegetation management in Fuel Modification Zones
- Public stewardship activities each month to maintain site
- Native plants grown by IRC volunteers



Wildlife Monitoring



- **Wildlife activity monitored with remote cameras; nearly 312,000 wildlife records**
- **7 Cameras in Buck Gully Reserve**
- **Wildlife in and around Buck Gully includes: Bobcats, Coyotes, Quail, Mule Deer and Racoons**



Big Canyon Resource Plan

- In 2018 IRC developed a Resource Plan for Big Canyon Nature Park in Upper Newport Bay:
- Plan includes:
 - Site Monitoring
 - Habitat Restoration Maintenance
 - Invasive Plant Control & Tree Pest Monitoring
 - Public Stewardship Events
 - Trail Usage Monitoring
 - Visitor Infrastructure Maintenance
- City evaluating management options



Big Canyon

- **Planted 450 native plants**
- **Maintained 2.57 acres of habitat restoration**
- **Public stewardship events on habitat restoration and invasive plant control**
- **No activity currently, but IRC monitoring restoration sites under contract**



Native Seed Farm



- IRC's Native Seed Farm grows 53 native plant species – produces thousands of pounds of fresh, high-quality seed for habitat restoration
- Native Seed Farm maintained by IRC staff and volunteers – public work days every Wednesday and Saturday
- Public facilities at Native Seed Farm include restrooms, gathering areas and work areas



Planning, Infrastructure and Operations

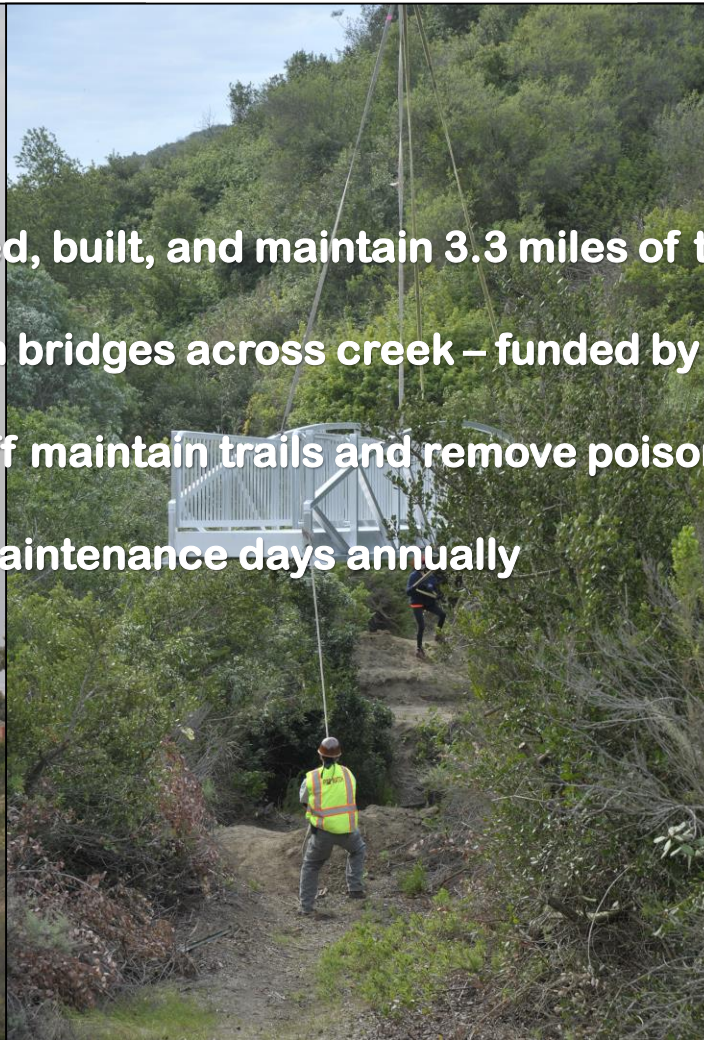
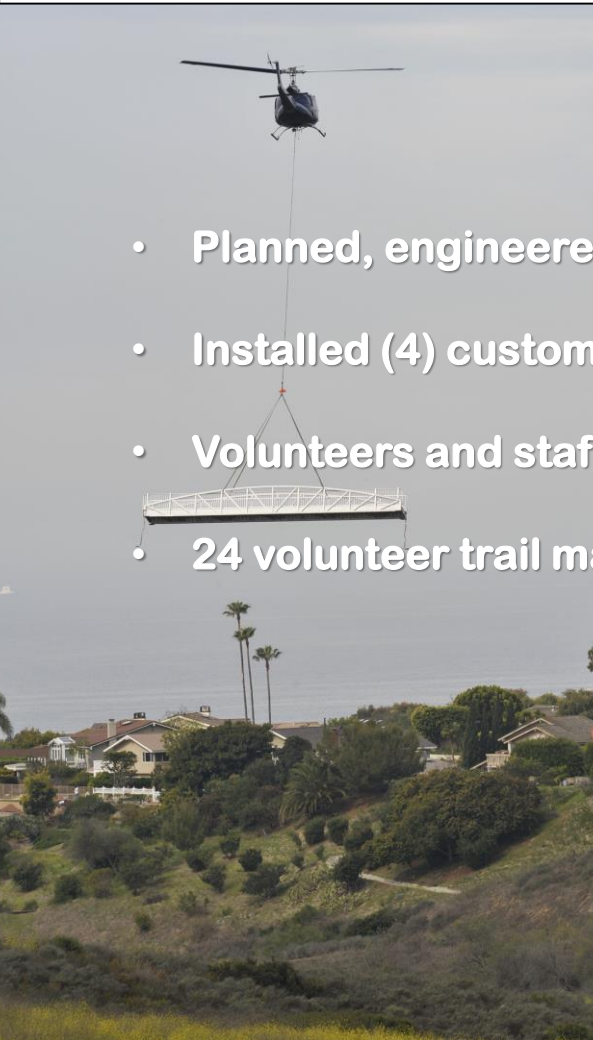


IRVINE RANCH
CONSERVANCY



Trails and Visitor Infrastructure

- Planned, engineered, built, and maintain 3.3 miles of trails
- Installed (4) custom bridges across creek – funded by grant from state of CA.
- Volunteers and staff maintain trails and remove poison oak weekly
- 24 volunteer trail maintenance days annually





NEWPORT BEACH

PB&R Commission Staff Report

Item **VI-B**
August 6, 2019

TO: Parks, Beaches & Recreation Commission

FROM: Public Works Department
Andy Tran, P.E., Senior Civil Engineer
949-644-3315, atran@newportbeachca.gov

TITLE: Lower Sunset View Park Conceptual Design

RECOMMENDATION:

Review the Lower Sunset View Park conceptual design and forward recommendations to City Council for final approval.

BACKGROUND:

The construction of Sunset Ridge Park was completed in December 2014. Due to insufficient parking and difficult access, the park is not being utilized to its fullest capacity. During the April 4, 2017 Parks, Beaches & Recreation (PB&R) Commission meeting, Public Works staff presented several ideas to improve pedestrian safety and access to Sunset Ridge Park from Sunset View Park. Staff subsequently held multiple meetings with the PB&R Sunset View Park Ad Hoc Committee and the City Council Working Group to develop a conceptual design that addresses these issues. After evaluating many preliminary design concepts, staff is ready to share the leading conceptual design with the PB&R Commission.

DISCUSSION:

The Lower Sunset View Park conceptual design includes a new pedestrian and bicycle bridge across Superior Avenue, increased parking and a small dog park. The project is located on the north side of West Coast Highway at the Superior Avenue intersection. The proposed project site is generally bounded by Sunset Ridge Park to the west, Newport Crest and Villa Balboa residential communities to the north, Hoag Hospital Lower Campus to the east and Lido Sands residential community and the Village Shopping Center to the south. Currently, there is a smaller public parking lot at this location that primarily serves visitors to the beach and Sunset Ridge Park. The area between the existing parking lot and Sunset View Park is currently undeveloped. Refer to the attached Exhibit A for the project location and Exhibit B for the conceptual design.

The new bridge across Superior Avenue will allow pedestrians and bicyclist to access Sunset Ridge Park from the proposed larger parking lot without the need to use the at-grade crosswalk. This will significantly improve pedestrian safety and access and will also improve vehicular circulation since the crosswalk push button will not be activated as often, allowing more time for vehicular movement.

The larger parking lot will have 128 parking stalls and will replace the existing smaller parking lot which only has 64 parking stalls. Significant earthwork and grading will be required to excavate the excess dirt from the undeveloped area. Most of the excess dirt will be used to fill the parking lot area. The small dog park, approximately 0.2 acre, will include separate small and large dog areas. Lastly, the final design will incorporate minor amenities such as a drop-off area, a bike node, and a drinking water fountain.

NOTICING:

The agenda item has been noticed according to the Brown Act (72 hours in advance of the meeting at which the PB&R Commission considers the item). In accordance with NBMC, residents within 300 feet of the Project were noticed. Public Works staff also held separate project update meetings with Newport Crest, Villa Balboa, Lido Sands and West Newport neighboring communities in May and June of 2019. The attached memorandum summarizes the discussions from these recent community meetings.

- Attachments:
1. Attachment A – Project Location
 2. Attachment B – Conceptual Design
 3. Attachment C – Community Outreach Summary

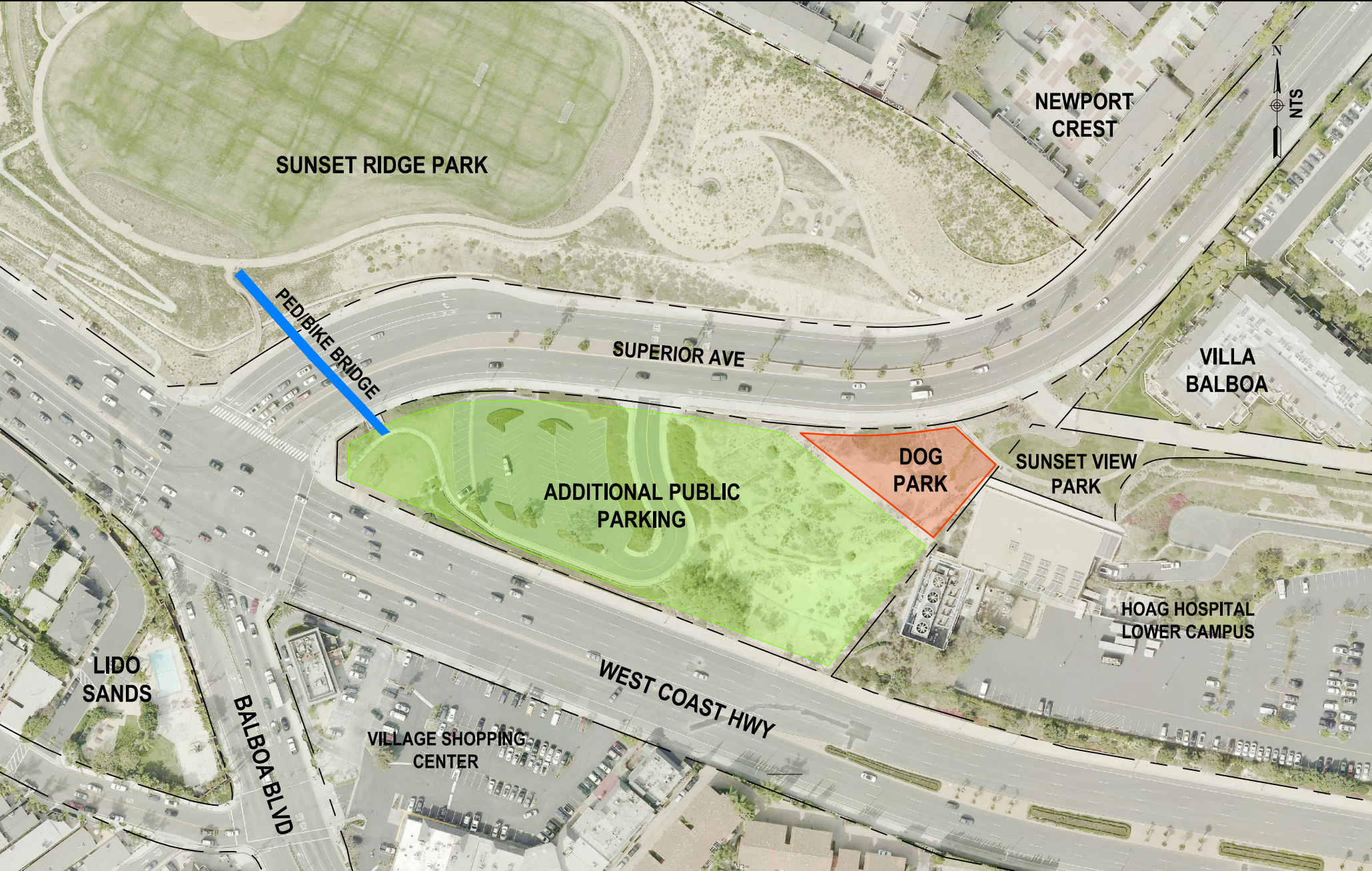


EXHIBIT A
LOWER SUNSET VIEW PARK
LOCATION MAP

CITY OF NEWPORT BEACH
PUBLIC WORKS DEPARTMENT

C-8020	8/6/2019
---------------	-----------------

F:\Users\PRW\Shared\Contrib\17120 CURRENT\100 - PARKS\HARBORS BEACH\Sunset View Park Extension C-788-1\Exhibits

ATTACHMENT B – CONCEPTUAL DESIGN

Parks, Beaches & Recreation Commission – August 6, 2019

Site Layout Plan:



Proposed Parking Lot Rendering:



Steel Truss Bridge – View from the North:



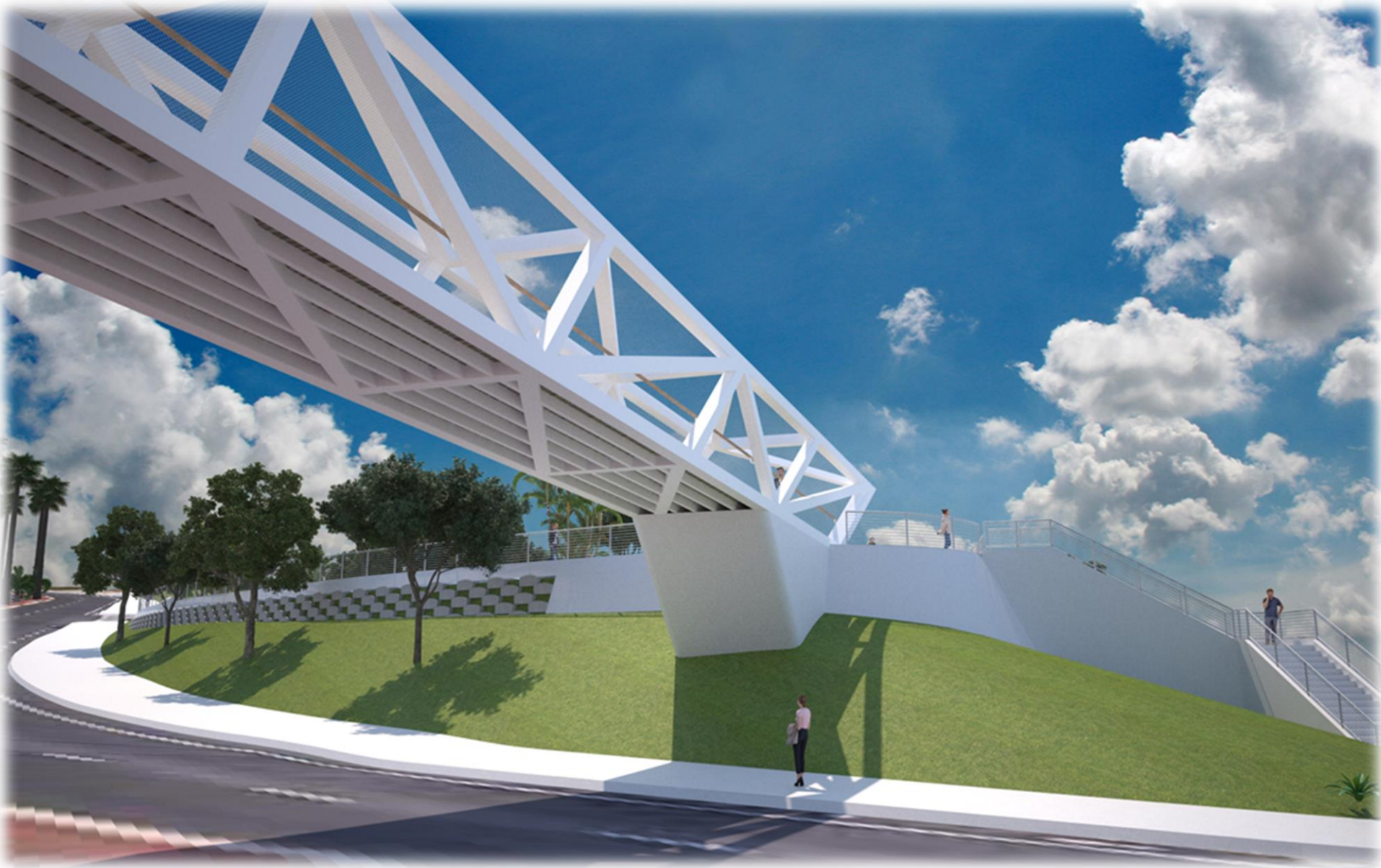
Steel Truss Bridge – View from the South:



Steel Truss Bridge – View from the Proposed Parking Lot:



Steel Truss Bridge – View from Below Bridge:



Concrete Cast-in-Place Bridge – View from the North:



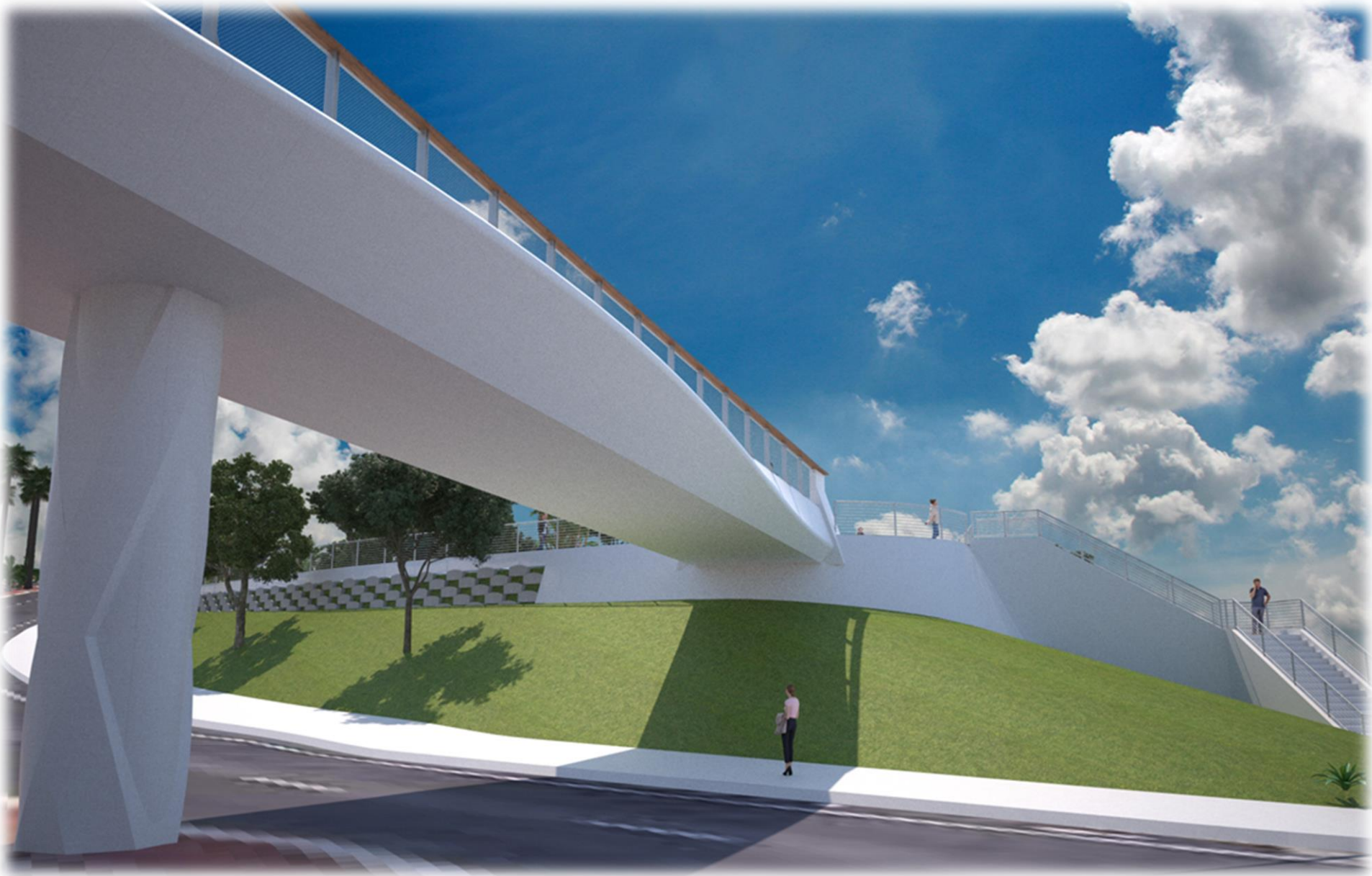
Concrete Cast-in-Place Bridge – View from the South:



Concrete Cast-in-Place Bridge – View from the Proposed Parking Lot:



Concrete Cast-in-Place Bridge – View from the Below Bridge:





MEMORANDUM

DATE: July 18, 2019

To: Andy Tran, City of Newport Beach

FROM: Tony Petros

SUBJECT: Superior Avenue Pedestrian Bicycle Bridge and Parking Area Project Public Outreach Summary

As part of the project development process, the City of Newport Beach Public Works staff completed a focused Public Outreach effort. This effort was focused on those neighborhoods in closest proximity to the proposed bridge structure and parking lot: Villa Balboa (5/21/19), Newport Crest (5/9/19) and Lido Sands (6/8/19). In addition, the City project team hosted a meeting with the West Newport Beach Association (5/29/19) as the umbrella organization for the entire West Newport Beach region.

The meetings included an introduction to the purpose and need of the bridge and parking lot project, a timeline of activities and products to date in the development process, opportunities for public involvement in decision making and project development next steps. A PowerPoint presentation was also shared that illustrated the two primary bridge design alternatives. The two leading bridge designs were:

1. Cast-in-place concrete bridge (3-span)
2. Steel truss bridge (single span)

Renderings of these two bridges showing possible architectural features were discussed. Staff also discussed preliminary visual simulations looking south towards the coast from the residential neighborhoods. The PowerPoint included the potential design for the parking lot and dog park which were two additional elements of the project.

The reception from all the community groups was generally positive. The majority of participants acknowledged the safety concerns for pedestrians and appreciated the more simple designs presented. Issues that were raised are summarized below.

1. Most participants do not want views to the ocean blocked. They appreciated the visual simulations presented and are looking forward to more detail to be provided through the project development and CEQA process.

2. Lighting of the bridge was discussed. Some participants want the bridge lit for safety purposes, while many suggested that lighting be downcast. Lighting should not be over the entire structure.
3. The issue of cost was raised. Most participants felt the cost for the project was acceptable, especially since the City sought and was awarded outside grant funding. One participant from Newport Crest did not believe the project was a wise expenditure of taxpayer dollars.
4. Most participants expressed relief that the project would address a pedestrian/vehicle conflict and safety issue. The participants from Villa Balboa raised concerns about vehicle speeds on Superior Avenue and wondered if the project would exacerbate safety issues through the Superior Avenue curve.
5. It did not appear that one alternative gained favor over the other. Although, the concrete cast-in-place design was somewhat preferred for its durability, minimal maintenance needs and lack of overhead structure.
6. The parking lot design was discussed and most believed the parking lot expansion was a positive concept. Some expressed concern about traffic congestion due to the additional parking spaces and greater traffic in the area. Some participants suggested opening the parking lot to the east for circulation out at Balboa Coves-Hoag Drive and West Coast Highway.
7. Many participants appreciated the drop off and turnaround area in the parking lot design.
8. Landscaping was raised as an issue. Many believed the future landscaping should complement the existing landscaping in the area, but not be as “dry” as the native vegetation around Sunset Ridge Park.



== CITY OF ==
NEWPORT BEACH
PB&R Commission Staff Report

Agenda Item **VI-C**
August 6, 2019

TO: Parks, Beaches & Recreation Commission

FROM: Public Works Department / Municipal Operations Division
Micah Martin, Deputy Public Works Director, Municipal Operations
949 644-3055, mmartin@newportbeachca.gov

TITLE: City Council Policy B-17- Changes as Directed by the City Council

RECOMMENDATION:

Receive and comment.

DISCUSSION:

On May 14, 2019, the City Council directed staff to bring City Council Policy B-17 back to the PB&R Commission for the revisions incorporating the directions provided below:

- Donation items such as tree(s) and bench(es) are not eligible for donation plaques; however, the donor will be provided with a certificate acknowledging the donation and the location of the donated item.
- Donation Requests of tree(s)/bench(es) must be submitted to and approved by the Public Works Department.

Public Works Department staff has attached the Current and the Council-directed versions of the Policy.

NOTICING:

The agenda item has been noticed according to the Brown Act.

Attachments:

- A. Current City Council Policy B-17
- B. Council-directed Revised City Council Policy B-17, redlined

PARKS, FACILITIES, AND RECREATION PROGRAM DONATIONS

Purpose

The City Council recognizes the need to promote community involvement and active participation in quality of life components throughout the community, and the need to establish a fair, equitable, and uniform procedure for which gifts may be donated to the City. This policy establishes criteria for donations to assure area compatibility, attractiveness, usefulness, and the capability to be maintained. Each donation considered for inclusion in the City park public improvement and street system will be subject to established limitations and guidelines for the particular area.

Policy

A. Acceptance of donations of cash or tangible items

1. Based on the value of the donation, appropriate City staff will review the acceptability of any donation and determine if the benefits to be derived warrant acceptance of the donation.
2. Criteria for evaluation includes consideration of any immediate or initial expenditure required in order to accept the donation, the potential and extent of the City's obligation to maintain the donation, and the community benefit to be derived from the donation.
3. The cost of a tangible donation shall include a 10% maintenance fee paid for in full by the donor. This maintenance fee is in addition to any other fees or charges.

B. Types of Donations

Donations may be received in the form of cash, real, or personal property. Restricted donations are those donations that the donor specifies for a particular City location or purpose. Unrestricted donations are those donations that are given to the City for unspecified use.

1. Cash Gifts

- a. Donation of cash or items valued at or below the amount set in City Council Policy F-3 may be accepted by the City Manager. However, any donation considered a park facility improvement that would result in an installation of a permanent fixture in the parks must be in compliance with subsection 4 of this policy, *Park, Public Improvement, and Street Amenities*.

- b. Donations above the amount set in City Council Policy F-3 for the City Manager may be accepted by the Parks, Beaches and Recreation Commission.
- c. Gifts of funds may be designated for restricted or unrestricted use. Gifts of cash or items that have a restriction must first be approved by the City Council.
- d. Gifts of funds accepted by the City imply no other obligation besides using donated funds for the specified purpose.

2. Trees

Tree donations add beauty to City parks and facilities. Trees may be donated and installed at parks and parkway locations recommended by the Municipal Operations Director and approved by the Parks, Beaches and Recreation Commission. The minimum size of tree donations must be 36" boxed containers unless waived by the Commission. Tree donations are limited to specific species listed on the Parkway Tree Designation List and/or matching the landscape in park locations.

3. Benches

Bench donations may be donated and installed in different areas of placement including parks, streets, along the beachfront, within villages, commercial districts, neighborhoods, on a specific island, etc. The Parks, Beaches, and Recreation Commission, with the assistance of Municipal Operations staff, shall designate the type, style, design, and placement of City-owned benches on City property.

- a. An inventory of designated benches and available bench locations will be maintained in the City Donation Catalog.
- b. Donation requests must be submitted to the Municipal Operations Department and meet the following requirements:
 - i. Bench donations along a city street, beachfront or other public right of way will require the approval of the Municipal Operations Director.
 - ii. Bench donations within a commercial district will require notification of, and an endorsement from, the local business association, if applicable.

- iii. Bench donations for parks and facilities within a residential community will require notification of residents and an established homeowners association or common interest development, when applicable, within 300 feet of placement.

4. Park, Public Improvement, and Street Amenities

Other amenities such as drinking fountains, tables, and other equipment that will improve public places in parks, in and/or around public buildings, streets, walkways, and trails may be donated to the City.

- a. Other amenities that may be donated will be identified in the City Donation Catalog.
- b. Donation of public amenities valued at or below the amount set forth in City Council Policy F-3 may be accepted by the City Manager.
- c. Donation of public amenities valued at the amount set forth in City Council Policy F-3 and above may be accepted or declined by the Parks, Beaches and Recreation Commission.
- d. Donations to be installed on public sidewalks shall meet the criteria described in Policy L-15 Encroachments on Public Sidewalks and approved by the Public Works Director and Municipal Operations Director.

C. Naming Rights

Donors may receive naming rights on capital improvement projects for which any donation matches or exceeds 75% of the total budgeted cost for the area benefiting from the donation. All such donations will be submitted to the City Council for acceptance of the donation and the name to be applied to the project in keeping with City Council Policy B-9 – *Naming of City Parks & Facilities*.

D. Sponsorships

Special Events are recognized as fundraising activities. Where donations or sponsorship of a special event will require some form of recognition, and, in order to provide recreational opportunities, corporate or organizational sponsors may be recognized by use of logos and name on event banners and signage. Signs and literature at all such special events would be at the discretion of the appropriate Department Director. The size, scale and location of corporate logos and names should not dominate the event facilities or area. Corporate logos and/or names should not be displayed in a manner that would, in any way, suggest the

endorsement of the Department or the City. All signs must comply with the City's existing sign code and Council Policies B-3 and B-8.

E. Right to Decline

The City of Newport Beach reserves the right to decline any donation if, upon review, acceptance of the donation is determined to be not in the best interest of the City.

F. Special Privileges

Making a donation or co-sponsoring a special event does not entitle a sponsor/donor to any special privileges other than those stated in this policy such as recognition, plaques or displays at events, unless otherwise agreed upon and approved by the Department Director or the City Council when appropriate.

G. Reserved

H. Acknowledgements

1. Letter of acceptance of donation will be sent to donor.
2. In some cases, recognition of donations may be given at Commission or Council Meetings.
3. Plaques are reserved for donations meeting the following criteria:
 - a. Donors providing donations valued at \$1,000 to less than \$4,000 may elect to provide a dedicatory plaque not exceeding 2" x 6" with a name designated by the donor preceded by one of the following: "Donated by", "Donated for", "In recognition of", "In Loving Memory" or "In Memory of".
 - b. Donors providing donations valued at \$4,000 or greater may elect to provide a dedicatory plaque not exceeding 5"x7" with name, date and dedication wording not exceeding 25 words. Plaque content must be approved by the Parks, Beaches & Recreation Commission.
 - c. Donors providing donations valued at least \$1,000 that recognize individuals or organizations that have provided distinguished long term and/or significant service to the City may include a dedicatory plaque not exceeding 5"x7" with name, date and dedication wording not exceeding 25 words. Individuals can include City employees with 25 or more years of distinguished service, as determined by the PB&R Commission.

- d. Plaques are at the expense of the donor, the City will assume ownership and maintenance of the donated item and plaque however, the City does not assume replacement costs due to vandalism or theft. Plaques will remain on a donated item during its useful life. The City reserves the right to remove and/or relocate the donated item.
- e. Plaque information will be entered on the Gift Donation Catalog application form and ordered by the City.

History

Adopted I-15 - 7-22-1991 ("Park Improvement Donation")

Amended I-15 - 1-24-1994 (changed to G-5)

Amended G-5 - 6-27-1994

Amended G-5 - 6-24-1996

Adopted B-17 - 5-9-2006 ("Park, Facilities, & Recreation Donations", incorporation G-5)

Amended B-17 - 2-24-2009

Amended B-17 - 6-26-2012

Amended B-17 - 8-8-2017

PARKS, FACILITIES, AND RECREATION PROGRAM DONATIONS

Purpose

The City Council recognizes the need to promote community involvement and active participation in quality of life components throughout the community, and the need to establish a fair, equitable, and uniform procedure ~~for~~ by which gifts may be donated to the City. This policy establishes criteria for donations to assure area compatibility, attractiveness, usefulness, and ~~the capability sustainability to be maintained of~~ maintenance. Each donation considered for inclusion in the City's parks ~~public improvement~~ and streets system will be subject to established limitations and guidelines for ~~the each~~ particular area.

Policy

A. Acceptance of ~~d~~Donations of cash or tangible items

1. Based on the value of the donation, appropriate City staff will review the acceptability of any donation and determine if the benefits to be derived warrant acceptance of the donation.
2. Criteria for evaluation includes consideration of any ~~immediate or~~ initial expenditure required in order to accept the donation, the potential and extent of the City's obligation to maintain the donation for a minimum ~~maximum~~ of 10 years, and the community benefit to be derived from the donation. After 10 years, the donated item and/or plaque may be removed or replaced by the City.
3. The cost of a tangible donation shall also include a ~~10%~~ 10% maintenance fee equal to 50% of the estimated 10-year maintenance cost of the donated item, paid for in full by the donor at the time of the donation. This maintenance fee is in addition to any other fees or charges, to the cost and installation of the donated item.

B. Types of Donations

Donations may only be received in the form of ~~cash, real, or personal property~~ a check. Restricted donations are those donations that the donor specifies for a particular City location or purpose. Unrestricted donations are those donations that are given to the City for unspecified use.

~~1. Cash Gifts~~

- ~~a. Donation of cash or items valued at or below the amount set in City Council Policy F-3 may be accepted by the City Manager. However, any donation considered a park facility improvement that would result in an installation of a permanent fixture in the parks must be in compliance with subsection 4 of this policy, *Park, Public Improvement, and Street Amenities*.~~
- ~~b. Donations above the amount set in City Council Policy F-3 for the City Manager may be accepted by the Parks, Beaches and Recreation Commission.~~
- ~~c. Gifts of funds may be designated for restricted or unrestricted use. Gifts of cash or items that have a restriction must first be approved by the City Council. Gifts of funds designated for unrestricted use shall be programed and spent on City parks as determined by the City.~~
- ~~d. Gifts of funds accepted by the City imply no other obligation besides using donated funds for the specified purpose.~~

~~2.1. Trees~~

~~Tree donations add beauty to City parks and facilities. Trees may be donated and installed at parks ~~and parkway locations~~ recommended by the Deputy Public Works ~~Municipal Operations~~ Director, Municipal Operations and approved by the Parks, Beaches and Recreation Commission. ~~The~~ Depending on availability, the minimum ~~size~~ cost of tree donations must be ~~36~~ equal to the price of a 48" boxed ~~containers~~ container plus maintenance costs, unless waived by the Commission. Tree donations are limited to specific species ~~listed on the Parkway Tree Designation List and/or matching~~ that match the landscape in park locations. ~~Tree donations are not eligible for donation plaques, however the donor will be provided with a certificate acknowledging the donation and the location of the donated tree.~~~~

~~3. Benches~~

~~Bench donations may be donated and installed in different areas of placement including parks, streets, along the beachfront, within villages, commercial districts, neighborhoods, on a specific island, etc. The Parks, Beaches, and Recreation Commission, with the assistance of Public Works Department ~~Municipal Operations~~ staff, shall designate the type, style,~~

Formatted: Indent: Left: 0", First line: 0"

design, and placement of City-owned benches on City property. Bench donations are not eligible for donation plaques, however, the donor will be provided with a certificate acknowledging the donation and the location of the donated bench.

- a. An inventory of designated benches and available bench locations will be maintained ~~in by~~ the City ~~Donation Catalog.~~
- b. Donation requests must be submitted to the Public Works - Municipal Operations Department Division and meet the following requirements:
 - i. Bench donations along a city street, beachfront or other public right of way will require the approval of the Deputy Public Works Director, Municipal Operations Director.
 - ii. Bench donations within a commercial district will require notification of, and an endorsement from, the local business association, if applicable.
 - iii. Bench donations for parks and facilities within a residential community will require notification of residents and an established homeowners association or common interest development, when applicable, within 300 feet of placement.
 - iv. Bench donations will be maintained (at the discretion of s defined by the City) for a minimum period of 10 years, or until the end of the bench's useful life. After 10 years or the end of the useful life of the bench, whichever comes first, reasonable effort will be made to contact the original donor (City will attempt to make contact for no more than 30 days if donor is unable to be reached) so as to grant them a first right of refusal to keep the donated item in their name. If denied, or the donor is unable to be reached, the donated item and/or plaque may be removed or replaced at the discretion of the City. Existing bench donations will also follow this process upon acceptance of this policy. b
 - v. Four types of benches are able to be donated, with exceptions by approval by the Parks, Beaches and Recreation Commission. Donors can choose from the following:
 1. Santa Monica Style - Standard Park Bench with

concrete legs and composite bench seat slats;

2. Huntington Beach Style - Standard Concrete Park Bench;
3. Victoria Style - Backless Standard Concrete Park Bench; or
4. Infinity Style - Standard Park Bench with metal legs and composite bench slats. Comes in standard or backless.

4. Park, Public Improvement, and Street Amenities

Other amenities such as drinking fountains, tables, and other equipment that will improve public places in parks, in and/or around public buildings, streets, walkways, and trails may be donated to the City.

- a. Other amenities that may be donated will be identified and approved in the City by City Staff Donation Catalog.
- b. Donation of public amenities valued at or below the amount set forth in City Council Policy F-3 may be accepted by the City Manager.
- c. Donation of public amenities valued at the amount set forth in City Council Policy F-3 and above may be accepted or declined by the Parks, Beaches and Recreation Commission.
- d. Donations to be installed on public sidewalks shall meet the criteria described in Policy L-15-6 Encroachments on-in Public Sidewalks Rights-of-Way and approved by the Public Works Director, and Municipal Operations Director.

C. Naming Rights

Donors may receive naming rights on capital improvement projects for which any donation matches or exceeds 75% of the total budgeted cost for the area benefiting from the donation. All such donations will be submitted to the City Council for acceptance of the donation and the name to be applied to the project in keeping with City Council Policy B-9 – *Naming of City Parks & Facilities*.

D. Sponsorships

Special Events are recognized as fundraising activities. Where donations or sponsorship of a special event will require some form of recognition, and, in order to provide recreational opportunities, corporate or organizational sponsors may be recognized by use of logos and name on event banners and signage. Signs and literature at all such special events would be at the discretion of the appropriate Department Director. The size, scale and location of corporate logos and names should not dominate the event facilities or area. Corporate logos and/or names should not be displayed in a manner that would, in any way, suggest the endorsement of the Department or the City. All signs must comply with the City's existing sign code and Council Policies B-3 and B-8.

E. Right to Decline

The City of Newport Beach reserves the right to decline any donation if, upon review, acceptance of the donation is determined to be not in the best interest of the City.

F. Special Privileges

Making a donation or co-sponsoring a special event does not entitle a sponsor/donor to any special privileges other than those stated in this policy such as recognition, plaques or displays at events, unless otherwise agreed upon and approved by the Department Director or the City Council when appropriate.

G. Reserved Timeliness

All donations are limited to a period of 10 years or until the end of the useful life of the item. After 10 years, or the end of the useful life of the item, whichever comes first, reasonable effort will be made to contact the original donor (City will attempt to make contact for no more than 30 days if donor is unable to be reached) for a right of first refusal to keep the donation in their name. If denied, or the donor is unable to be reached, the location may become available for a new donation.

H. Acknowledgements

1. Letter of acceptance of donation will be sent to donor.
2. In some cases, recognition of donations may be given at Commission or Council Meetings.

3. Donor will receive a certificate of acknowledgement for the donation and their name placed on the GIS Donation map, with coordinates of the location of their donation.

~~3. Plaques are reserved for donations meeting the following criteria:~~

- a. ~~Donors providing donations valued at \$15,000 to less than \$410,000 may elect to provide a dedicatory plaque not exceeding 2" x 6" with a name designated by the donor preceded by one of the following: "Donated by" or, "Donated for," "In recognition of", "In Loving Memory" or "In Memory of". Trees are not eligible for donation plaques.~~
- b. ~~Donors providing donations valued at \$410,000 or greater may elect to provide a dedicatory plaque not exceeding 5" x 7" with name, date and dedication wording not exceeding 25 words. Plaque content must be approved by the Parks, Beaches & Recreation Commission. Trees are not eligible for donation plaques.~~
- c. ~~Donors providing donations valued at least \$1,000 that recognize individuals or organizations that have provided distinguished long term and/or significant service to the City may include a dedicatory plaque not exceeding 5" x 7" with name, date and dedication wording not exceeding 25 words. Individuals can include City employees with 25 or more years of distinguished service, as determined by the PB&R Commission.~~
- d. ~~Plaques are at the expense of the donor and, the City will assume ownership and maintenance of both the donated item and plaque however, the City does not assume replacement costs due to vandalism or theft. Plaques will remain on a donated item during its useful life, or up to 10 yearsrs. If the donated item becomes unusable or unsightly within the 10 year period due to natural causes, the City does not assume responsibility to keep and/or maintain the item. The City reserves the right, without permission of the donor, to remove and/or relocate the donated item, for any reason. The year of the donation will be included on all plaques.~~
- e. ~~Plaque information will be entered on the Gift Donation Catalog application form and ordered by the City.~~

History

- Adopted I-15 - 7-22-1991 ("Park Improvement Donation")
- Amended I-15 - 1-24-1994 (changed to G-5)
- Amended G-5 - 6-27-1994
- Amended G-5 - 6-24-1996
- Adopted B-17 - 5-9-2006 ("Park, Facilities, & Recreation Donations", incorporation G-5)

B-17

Amended B-17 - 2-24-2009
Amended B-17 - 6-26-2012
Amended B-17 - 8-8-2017
Amended B-17 - 5-14-10-2019



== CITY OF ==

NEWPORT BEACH

PB&R Commission Staff Report

Agenda Item **VI-D**
August 6, 2019

TO: Parks, Beaches & Recreation Commission

FROM: Public Works Department / Municipal Operations Division
Micah Martin, Deputy Public Works Director, Municipal Operations
949 644-3055, mmartin@newportbeachca.gov

TITLE: Continuation: Appeal of Denial for Tree Removal Request – 720 Jasmine Avenue

RECOMMENDATION:

Staff recommends that the PB&R Commission consider the appeal from John Buckingham (resident at 927 Gardenia Way) of staff's denial of the removal of a City Sugar Gum tree in front of 720 Jasmine Avenue.

DISCUSSION:

City Council Policy G-1, Retention, Removal, and Maintenance of City Trees, allows the PB&R Commission to act upon an appeal to remove Standard City trees. On July 12, 2018, property owner John Buckingham, resident at 927 Gardenia Way within the Jasmine Park Association, contacted the City to request the removal of a Sugar Gum tree in front of 720 Jasmine Avenue due to view encroachment and sidewalk damage.

The City Arborist inspected the tree on March 1, 2019 and determined the Gum tree is in healthy and stable condition and does not meet the criteria for removal referenced in the G-1 Policy. The City sidewalk is lifted likely due to the roots of the tree, which can be mitigated with root pruning/shaving and repair to the sidewalk, or the sidewalk could be ramped within ADA specifications to avoid any root pruning. Mr. Buckingham was informed and advised of the City Arborist's findings, and that he could appeal staff's decision to the PB&R Commission. Attached are the Tree Removal Review and Tree Inspection Report.

On May 30, 2019, staff received a request for continuance from Jasmine Park HOA representative Michael Ruane.

NOTICING:

John Buckingham, Council Member Joy Brenner, and Corona del Mar Village Community Association / Corona del Mar Residents Association have received notification. Additionally, surrounding property owners were notified via postcard of the Commission Meeting related to this appeal of staff's denial of the removal request. The tree was posted with information regarding the removal request.

Attachments:

- A. Tree Removal Application
- B. Tree Removal Review and Tree Inspection Reports
- C. Correspondence



CITY OF NEWPORT BEACH

Municipal Operations Department

DAW

Tree Removal or Reforestation Application

Per City Council Policy G-1 (Retention, Removal, and Maintenance of City Trees), I am requesting a tree removal(s) to be reviewed by staff and submitted to either the Parks, Beaches, and Recreation Commission for consideration at a future meeting or the appropriate City approving authority. I am aware that Commission meetings are regularly held on the first Tuesday of each month (except for holidays) at 6:00 p.m. in the Council Chambers.

1 LARGE TREE

Quantity and specie(s), (if known) of tree(s).

UNKNOWN

Location of tree(s)

CORNER OF JASMINE / 5th STREET, CORONA DEL MAR

Please be as specific as possible

Requestor

- Property Owner(s)
- Community Association
- Other

Address/ Phone (Daytime) / Email

927 GARDENIA WAY CDM, 92625
949-887-9203
JCBUCK16@AOL.COM

Signature:

[Handwritten Signature]

Date:

7/12/18

Print Name:

JOHN BUCKINGHAM

REFORESTATION REQUESTS: Please proceed to Section B.

Section A. For Tree Removal Requests Only

Removal Criteria (Check one or more)

Please provide copies of photos, bills, documents or any other related material that will verify the checked items.

- Proven and repeated history of **damaging** public or *private, sewers, water mains, roadways, sidewalks, curbs, walls, fences, underground utilities or foundations. (*Greater than \$500)
- Repeated history of **significant interference** with street or sidewalk drainage.
- Dying** Has no prospect of recovery.
- Diseased** Cannot be cured by current arboricultural methods. In advanced state of decline with no prospect of recovery.
- Hazardous** Defective, potential to fail, could cause damage to persons/property upon failure. Assessment by City Arborist will identify structural defects, parts likely to fail, targets-if fails, procedures and actions to abate.
- Beautification Project** In conjunction with a City Council-approved City, commercial, neighborhood, or community association beautification program.

Section B. For Reforestation Requests Only

Reforestation is the concept of systematically replacing Problem or All Other Trees which are creating hardscape and/or view problems and cannot be properly trimmed, pruned or modified to alleviate the problem(s) they create, or those which have reached their full life, and are declining in health, or are simply the wrong species of tree(s) for the planted location.

As initiated by:

- Property Owner(S)
- Community Association
- Other _____

Check all items applicable:

- Tree(s) causing curb, gutter, sidewalk or underground utilities damage.
- Wrong tree species for location
- View encroachment
- Area has clearly defined contiguous boundaries that include the tree(s) proposed.
- Residential communities, neighborhoods, or business organizations who apply for reforestation must submit a petition signed by a minimum of 60% of the property owners within the area defined.
- Areas represented by a legally established community association, may submit a resolution of the Board of Directors formally requesting a reforestation.
- Individual property owners must submit a petition signed by a minimum of 60% of a maximum of 30 private property owners (up to 15 contiguous private properties on both sides of the street up to 500' in either direction from the location of the proposed reforestation site) as well as the endorsement of the appropriate homeowners' association, if applicable.

*A request for reforestation requires a written agreement submitted to the Parks, Beaches, and Recreation Commission by the petitioning sponsor (Individual private property owner(s) or group) to pay 100% of the costs of the removal and replacement of the public tree(s) in advance of any removal activity. The actual removal and replanting will be coordinated by the Municipal Operations Department using the City tree maintenance contractor.

*There shall be a minimum of a one-for-one replacement of all tree(s) removed in reforestation projects. Replacement tree(s) shall be a minimum size of 36" boxed tree and cost ranges from \$706 to \$910, unless the parkway space will not accommodate a 36" boxed tree or a tree cannot be planted due to planting restrictions contained in City Council Policy G-6.

This form does not replace the requirements of any of the City tree policies. Its use is intended to expedite the tree removal or reforestation requests and to ensure compliance with all City requirements. Please refer to individual City Council Policy G-1 for additional information.

REQUESTOR COMMENTS:

① View of (Crown All) CHALINA OBSTRUCTED !!

② - WALKWAY HAZARD DUE TO CURB DAMAGE BY ROOTS

③ REQUEST AUGUST 7th AGENDA

Removals, except emergency, will be subject to the notification processes, time frames and authority as specified in the City Council G-1 Policy.













Public Works Department/Municipal Operations Division

TREE INSPECTION REPORT

Name: Landscape Division

Location(s) of tree(s): 720 Jasmine Avenue / Front 1

Request: A representative from the Jasmine Park Homeowners Association has requested the removal of a City Sugar Gum tree due to view encroachment and sidewalk damage.

Botanical/Common Names: Eucalyptus cladocalyx / Sugar Gum

Designated Street Tree: Appropriate tree selected from the City's Parkway Tree Designation List, Per City Council Policy G-6.

Estimated Trees Values: \$9,830.00

Damage: City sidewalk

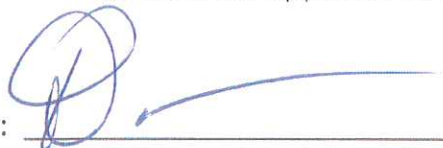
Parkway: Concrete Brick (X) Turf Other

Comments: A field inspection determined the Sugar Gum is in a healthy and stable condition and does not meet the criteria for removal referenced in the G-1 Policy. The City sidewalk is lifted likely due to the roots of the tree. The sidewalk lifting can, either be mitigated with root pruning/shaving and repair to the sidewalk, or the sidewalk could be ramped within ADA specifications to avoid any root pruning.

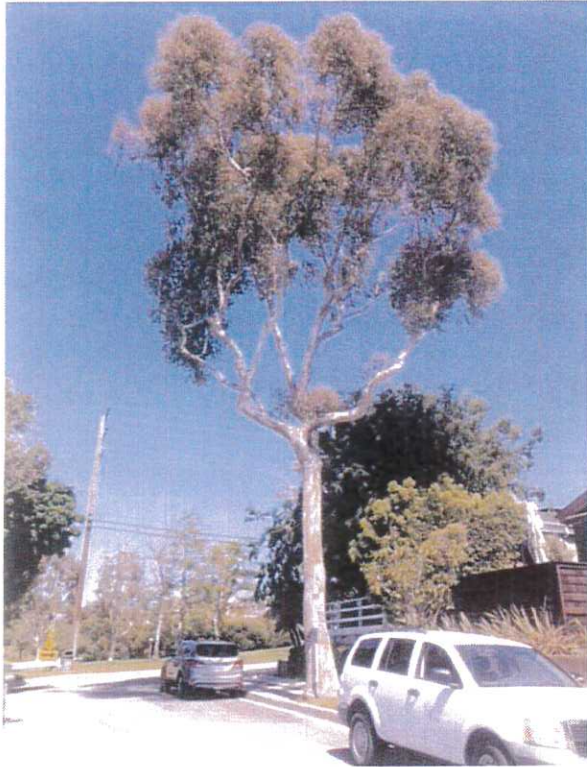
Inspected by: 
Kevin Pekar, City Arborist

Date: March 1, 2019

Recommendation: Staff is denying the removal request of the Sugar Gum tree and has advised the applicant of the reforestation and appeal processes.

Reviewed by: 
Dan P. Sereno, Landscape Manager

Date: March 1, 2019



720 Jasmine Avenue

May 3, 2019

City of Newport Beach, California
Parks, Beaches & Recreation Commission
City Council Chambers
Newport Beach, CA 92660
Walt Howald, Chair

Kevin Pekar, City Arborist
Joy Brenner, City Council Member, District 6

RE: PBR Commission Meeting May 7th, 2019
Section VI Current Business, Item C. Appeal of Denial of a Request for a Tree Removal -
720 Jasmine Ave.

As a representative group of the majority of residents of the 700 block of Jasmine Avenue, we would respectfully request the PB&R Commission **does not** overturn the denial by staff for the removal of a Sugar Gum (eucalyptus cladocalyx) located in front of the property 720 Jasmine Ave. A summary of our reasons is listed below, with additional supporting information following.

The tree has been inspected on multiple occasions by both the City Arborist and the Chief of Tree Maintenance and, per the most recent report, the tree was found to be “in healthy and stable condition and does not meet the criteria for removal.” The original petition claimed the tree was hazardous and that was causing sidewalk repair issues the city would not address. Both of these claims are contrary to the findings of the city’s own report included in the agenda for this item.

The notice of the meeting and the agenda erroneously refer to the request being by “John Buckingham of 720 Jasmine Avenue.” The property owner of 720 Jasmine is Kathy Skibicki, and has been for over 20 years. She strongly opposes the removal of the tree (her communication included below). Mr. Buckingham resides in the condominium project Jasmine Park, and his address is 927 Gardenia Way, approximately ¼ mile from the subject tree.

The 720 Jasmine Sugar Gum is one of the original Windbreak Trees and has been there for decades. The tree was there long before the Jasmine Park condominium project was even built in 1986, and certainly there prior to the current petitioner purchasing property. So, anyone currently wishing its removal has lived with it for years, or has recently purchased property, in either case would have full knowledge of the tree’s presence. It is not like this mature tree just appeared suddenly or recently shot up.

Those of us closest to the subject tree at 720, 718, and 716 Jasmine purchased our properties with full knowledge of the Sugar Gum, and it is fair to say they were purchased in part *because* of the trees. These beautiful trees provided shade, wind protection and privacy for our properties. In 2008, 718 Jasmine was remodeled with views of the trees taken into part of the design. We believe removal of the subject tree would decrease our property values.

Sadly, on December 12th, 2012, two other Sugar Gums were removed from in front of 718 and 720 Jasmine by the city. Since that time there has been a substantial increase in heat for most of the year due to the lack of protective shade, and it has also increased maintenance costs due to additional sun exposure. We wish to avoid further sun exposure and increased heat.

The petitioner is claiming impairment of view. View obstruction is extremely subjective. We have data that would show the subject Sugar Gum (again which has been there for decades) only impacts a small portion of specific residents and only from specific angles. We believe the views of the tree are additive to our views and enhance our neighborhood. We do not understand how the sudden whims of a small group should be valued more than any other group.

A petition was circulated in an attempt to get 700 block residents to agree that the tree should be removed. (We would note that this petition included what we would consider some misleading information). It failed. Not only did they not get a majority of residents to express willingness, or even neutrality, to have the tree removed, we have contacted the neighbors and a majority expressed that they **do not** want the tree removed. It should also be noted that while we have not been able to reach every property owner, we have yet to connect with any 700-block property owner that desires the tree's removal. There are those who want it left alone, and those we have not yet reached.

On several occasions the PB&R Commission has heard expert opinions that the City of Newport Beach has a smaller tree population than those of other comparable cities, and that the reforestation of trees has mysteriously not seemed to match the removal of trees. We are all in favor of trees, and particularly any tree of mature character that is healthy and sound.

Property owners contacted that expressed being in favor of tree remaining:

720 Jasmine Ave. Kathy Skibicki (communication included)
718 Jasmine Ave. Paul and Denise Rand
717 Jasmine Ave. Jordan and Dan Floriani
716 Jasmine Ave. Edie Barvin (communication attached)
714 Jasmine Ave. Ace Clark
713 Jasmine Ave. Geoff and Kim Maloney
710 Jasmine Ave. Jake and Allison Poleo
708 Jasmine Ave. Ken and Boots Strauss
706 Jasmine Ave. Jim Thompson
705 Jasmine Ave. Lisa Rahmin
704 Jasmine Ave. Alyssa Pisano
700 Jasmine Ave. Denise Oglesby

In our efforts to prepare these materials, and in the short time available, we only focused on those residents living in the 700 block on Jasmine because of the proximity to the subject tree. Several other residents down Jasmine, on Iris, on Larkspur, on 5th, on 4th, and those enjoying the park across the street from the tree expressed interest in how to participate in saving the Sugar Gum. We did not include these residents, but if necessary believe they should have every right to express their opinion as to compared to those residents who live farther away in the Jasmine Park project.

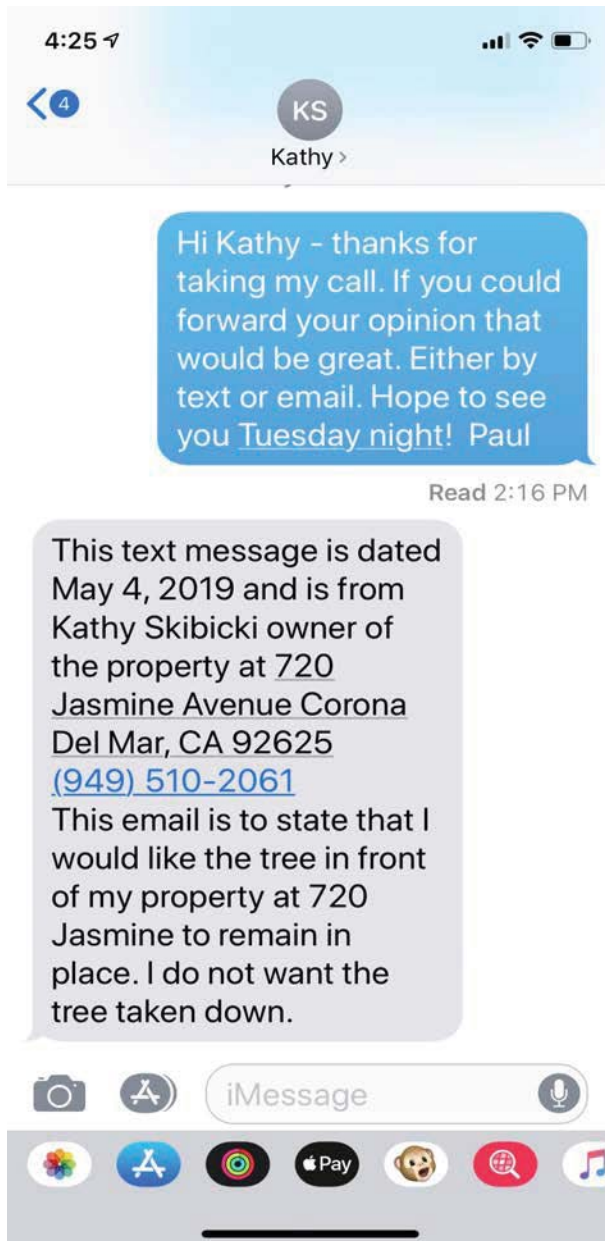


Property owners who have indicated they do not want tree removed

Property owners who we have not yet been able to reach.



Communication from Kathy Skibicki, owner 720 Jasmine Ave:



October 29, 2018

Dear Newport Beach City Council,

I am writing in regards to the Jasmine Creek residents' petition to remove the eucalyptus tree on the 700 block of Jasmine Avenue, to which I am firmly opposed.

Trees of differing shapes and heights *add* to the landscape and *enhance* the view rather than detracting from it. They are, in general, good for the environment, cleaning the air and providing safe nesting for a variety of birds. Our tree, in particular, shades our homes and is a home to a large owl. Owls help naturally control the rat and mice population in our neighborhood.

In the photo the petitioners have provided, a thin slice of the panoramic view of the ocean is taken up by our tree. It's ridiculous to contend that this one mature tree in the far distance diminishes property values in Jasmine Creek. It is our homes' values that would be negatively affected if our beautiful eucalyptus were to be removed.

As for safety, the city has already removed the tree next to this one—much to our disappointment—and deemed this remaining tree to be healthy and well-rooted. The city has done an excellent job of pruning our tree on a regular basis. Sidewalk lifting is minimal and has not noticeably increased in the 31 years I've lived on Jasmine Avenue. Perhaps these Jasmine Creek homeowners would like the city to remove all curbs as well?

Please do not give in to the senseless demands of a few Jasmine Creek residents.

Sincerely,

Edith Ann Barvin
716 Jasmine Ave.
Corona del Mar, CA 92625
949-422-6486



As noted, impaired views are very subjective. This photo is from just above the Jasmine Park project, where the petitioner resides, looking across the tops of the units. From this view, it is difficult to identify the subject tree.





Another view from across the top of Jasmine Park condos. Where is the subject tree?
Why is it considered any differently than any of the other mature trees?





Current photo - The subject tree provides shade, beauty and privacy from between properties and upstairs views.



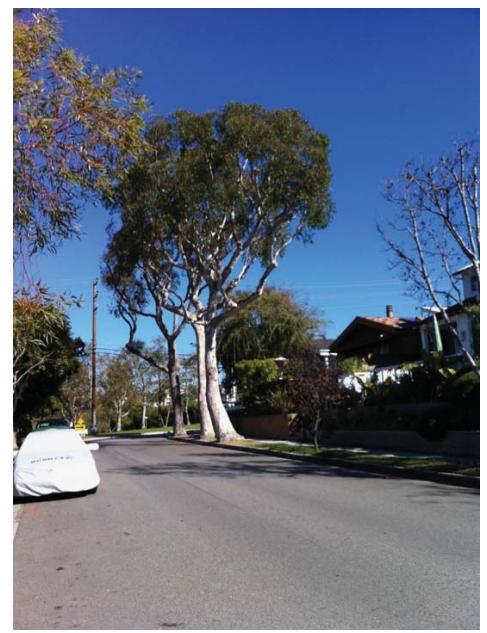
This small Magnolia is what replaced one of the two huge Sugar Gums removed six years ago. It hasn't grown much and provides no shade.



These large trees offer beautiful views and privacy for upstairs units, increasing their value.



The interior of a home with added views of the trees from inside.



These are shots from back in 2012, when we had all three large trees.



December 12th, 2012. Destruction of two of the three Sugar Gums in front of 720 and 718.



Current photo of subject tree



Current photos. We think it would be sad to lose this last tree.



One of our concerns is the precedent being set. If a few residents can claim a tree that has been in existence for decades is now impairing their view, where does it stop? From some of our properties we can see all the Palms that line Goldenrod. What if we were to decide we found their interference with our sunset unappealing? There are just far too many beautiful mature, tall trees to have this become the criteria.



Thank you for your consideration and we hope you will agree that keeping this beautiful, healthy tree is more valuable to our community than pleasing a few homeowners looking to improve their interests.

For specific questions please contact:

Paul Rand

718 Jasmine Ave.,

Corona del Mar

949-719-9197



G-1 Policy Noticing for City Tree Removals

Public Works Department
Municipal Operations Division

How Tree Removal Process Starts

- Initiated by City Staff
 - Regular Inspections
 - Emergencies

OR

- Tree Removal or Reforestation Application Initiated by
 - Property Owner, or
 - Community Association, or
 - Other (neighbor)

Classification/Definition of City Trees

- Standard Trees
- Special Trees
 - Landmark Trees
 - Dedicated Trees
 - Neighborhood Trees
- Problem Trees



Removal of City Trees

Criteria

- Dead
- Dying
- Diseased
- Presents Liability
- Affecting Public Infrastructure
 - Curb, Gutter, & Sidewalks
- Affecting Sewer or Utility Lines



Emergency Removals



Emergency removals of Special Trees can be approved by the City Arborist. Reported following the removal.

Removal of Special Trees

- Tree Inspection Report prepared by City Arborist
- Special Tree Report (approved by the City Manager) presented and considered by the Parks, Beaches, and Recreation (PB&R) Commission
- Notification Poster is posted on the tree 72 hours prior to PB&R meeting
- If removal is approved, Notification Poster is left on the tree 30 days prior to the removal

AND

- Notification Postcard is sent to the following:
 - Applicant
 - Property owner next to / adjacent to the tree (if not the applicant)
 - Property Owners on either side of the street, within 500 feet in each direction of the tree

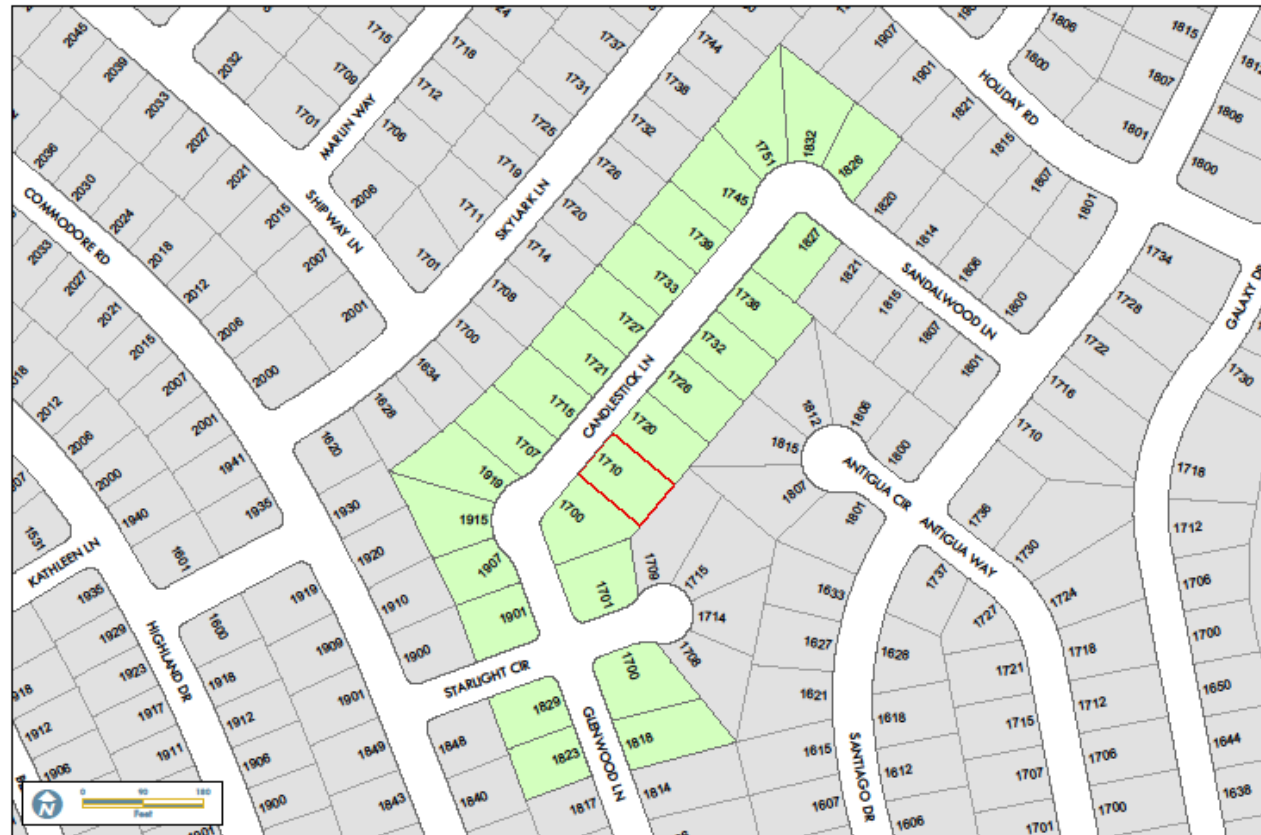
OR

- Applicable homeowner's association

Special Tree Posting Example



Example for Special Tree Removal Notification



1710 Candlestick Ln



City of Newport Beach
GIS Division
May 14, 2019

1710_Candlestick.wxd

Problem Trees

- Staff reports the removal of Problem Trees to the PB&R Commission on a monthly basis
- No more than 50 without special approval by PB&R Commission



Standard Trees

- Property owner next to / adjacent to the tree (if not the applicant or a Staff-directed removal) is notified in advance of the removal.
- Tree decisions may be appealed to PB&R Commission.
 - Commonly by applicant and/or property owner next to the tree.

Contractor is required to
post standard tree removals
72-hours prior to the
scheduled work



Standard Tree Appeal Posting Example

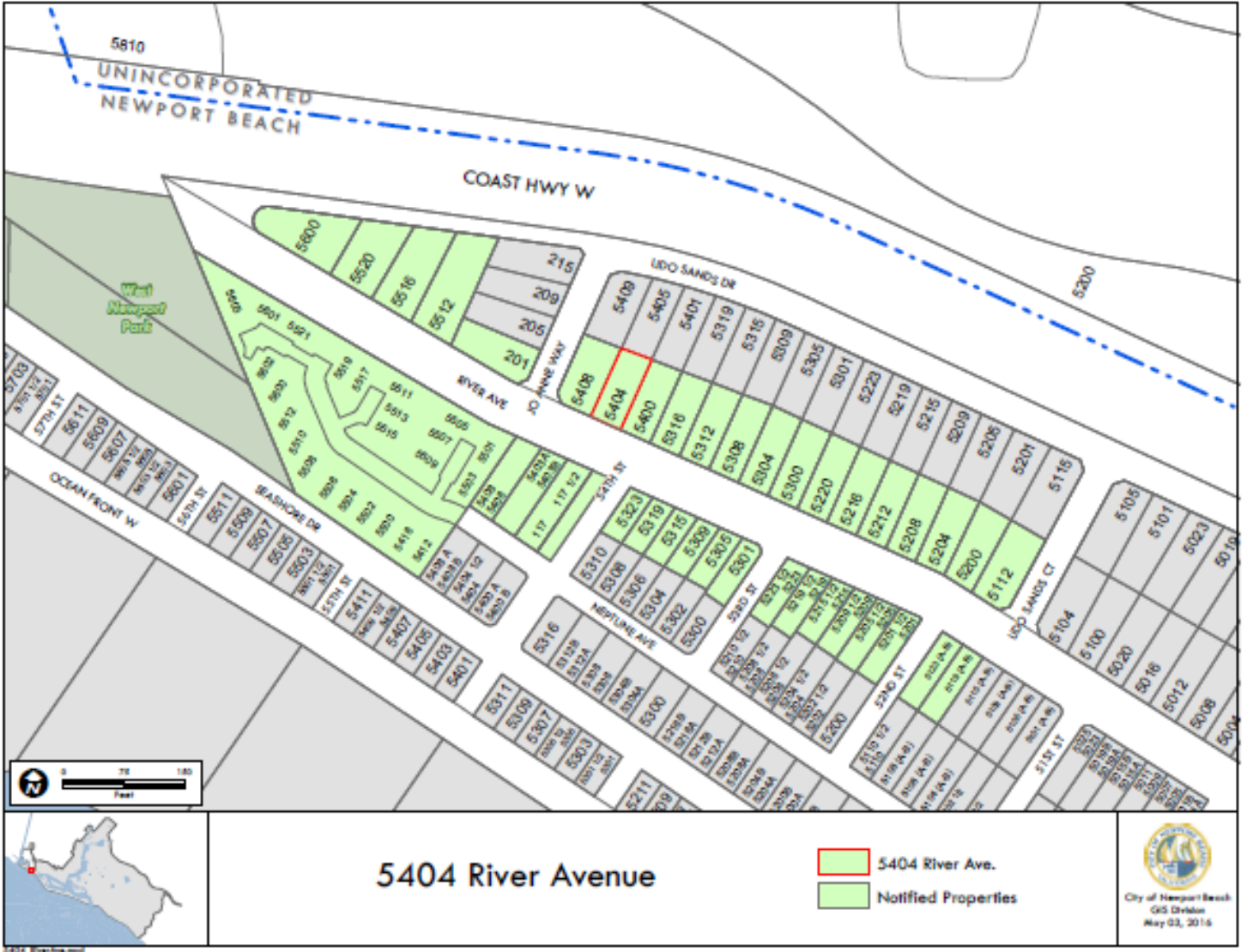


Reforestation of City Trees

- Applicant to bear cost of tree removal & replacement
 - Private Residential – Petition Process
 - Maximum of 30 property owners
 - Homeowners Association
- Requires PB&R Commission approval



Example of Petition Map for Private Property Owners





Questions?



CITY OF

NEWPORT BEACH

PB&R Commission Staff Report

Item **VII-F**
August 6, 2019

TO: Parks, Beaches & Recreation Commission

FROM: Recreation & Senior Services Department
Laura Detweiler, Recreation & Senior Services Director
949-644-3157, LDetweiler@newportbeachca.gov

TITLE: Fiscal Year 2019-20 Ad Hoc Committee / Liaison Appointments

RECOMMENDATION:

Staff recommends that the PB&R Commission discuss, reaffirm, appoint or sunset the following Ad Hoc committees where appropriate:

- **Big Canyon – Sunset**
Assist with conceptual design and community outreach for Big Canyon Phase 2A
Currently serving: Commissioners Archer, Daruty & Howald
- **Community Service Award – Reaffirm & Appoint**
Assist with administering the Community Service Award Program and identifying recipients.
Currently serving: Commissioners Granoff, Ignatin, vacant position
- **Grant Howald Park Rehabilitation – Sunset**
Assist with the conceptual design and community outreach process.
Currently serving: Commissioners Archer, Howald & Ignatin
- **Sunset View Park – Reaffirm**
Assist with the conceptual design and community outreach process.
Currently serving: Commissioners Granoff, Hayes & Ignatin
- **Youth Sports Commission Liaison – Reaffirm & Appoint**
Provide advisory support to the Youth Sports Commission in the allocation of field space.
Currently serving: Commissioners Daruty, Hayes, vacant position
- **Donations Program (City Council Policy B-17) – Sunset**
Assist with staff to review and develop potential revisions to City Council Policy B-17 - "Parks, Facilities and Recreation Program Donations" to address said issues.
Currently serving: Commissioners Daruty, Granoff & Howald

BACKGROUND:

At the first meeting of each fiscal year, the PB&R Commission holds elections and discusses Ad Hoc Committee and Liaison appointments.

Staff recommends that the Community Service Award, Sunset View Park and Youth Sports Commission be reaffirmed and appointed for next year; and sunset Big Canyon, Grant Howald Park and the Donations Program as their intended purpose has been completed.

NOTICING:

The agenda item has been noticed according to the Brown Act (72 hours in advance of the meeting at which the PB&R Commission considers the item).