

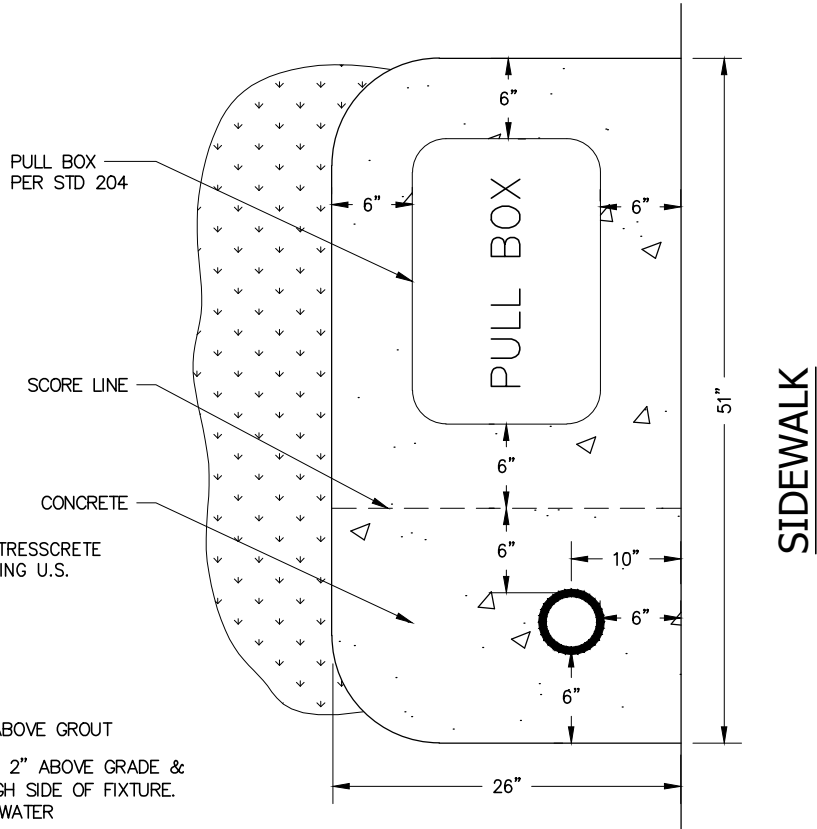
SPECIFICATIONS:

STRESSCRETE GROUP
 CATALOGUE NO.: MOD. KLCS-OAAF-V-36(SSL)3500
 -XPE-BE4 P2 - 4-1/2" BCD MOUNTING
 OPTICAL SYSTEM: LOUVRE ACRYLIC CLEAR
 IES CLASS: TYPE V
 WATTAGE: 12W
 LIGHT SOURCE: LED
 LINE VOLTAGE: 240V (MULTI-TAP)
 FINISH: ETCHED
 PAINT LOUVRES: BLACK
 TOP SIZE: 8" Ø
 APPROX. WGT." 133 LBS.


OPTIONS:

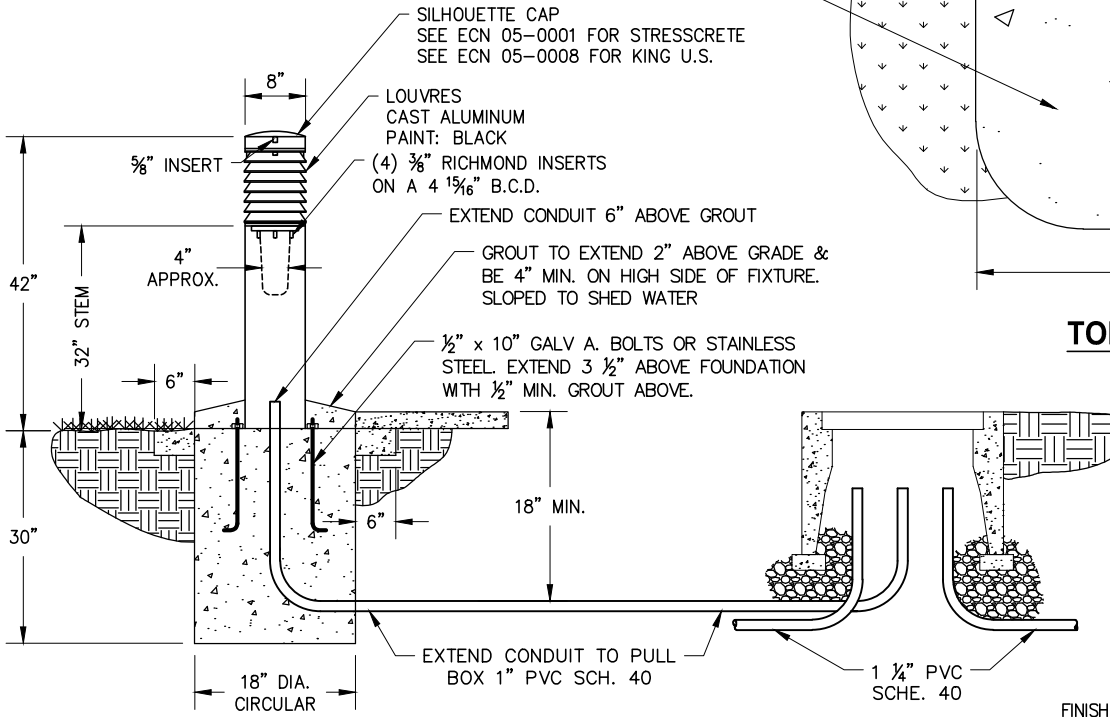
QUICK DISCONNECT:

FOR WIRING DIAGRAM SEE
 STRESSCRETE GROUP DRAWING 209B0305

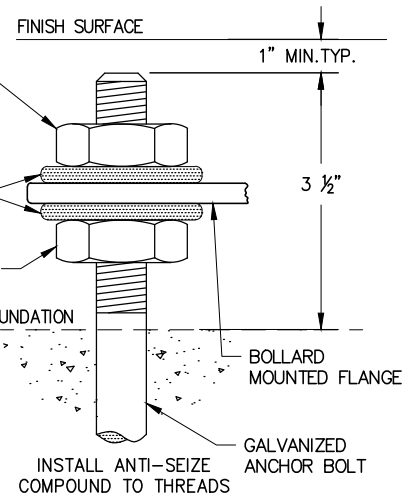


TOP VIEW

SYMBOL
 LED BOLLARD TYPE, COLOR TEMPERATURE, DISTRIBUTION, FINISH, DRIVE CURRENT, AND WATTAGE WILL BE DETERMINED BY THE CITY ON A CASE-BY-CASE BASIS.



SIDE VIEW



LEVELING DETAIL

GENERAL NOTES

1. THE AREA AROUND ALL BOLLARDS SHALL BE FORMED AND Poured WITH GROUT TO EXTEND 6" ON EACH SIDE AND BACK GROUT CONSISTS OF 2 PARTS SAND 1 PART CEMENT.
2. EACH BOLLARD SHALL HAVE AN ADJACENT PULL BOX SEE STD 204.
3. FUSE HOLDER SHALL BE LOCATED IN PULL BOX SEE STD 205.
4. ALL THREADED CONNECTIONS SHALL HAVE PRE-APPROVED ANTI-SEIZE COMPOUND.
5. SEE POLE LEVELING DETAIL.
6. FOR POLE WIRING SEE STD 205.
7. BOLLARDS SHALL HAVE ONE CENTRAL PHOTO CELL WITH LOCATION APPROVED BY UTILITIES DEPARTMENT.
8. POLE NUMBERING SHALL BE 1" BLACK VINYL SELF-ADHESIVE NUMBERS ON 1" x 6" REFLECTIVE BACKING INSTALLED IN A VERTICAL ORIENTATION.

APP. *James M. Hinkle* 51568 11/24/2020
 CITY ENGINEER RCE DATE

NO.	DATE	DESCRIPTION OF REVISIONS

CITY OF NEWPORT BEACH DEPARTMENT OF PUBLIC WORKS

DRAWN: M. ELIAS
 DATE: 11/3/2020

BOLLARD LIGHTING STANDARD

STANDARD DRAWING NO.
208
 SHEET 1 OF 1