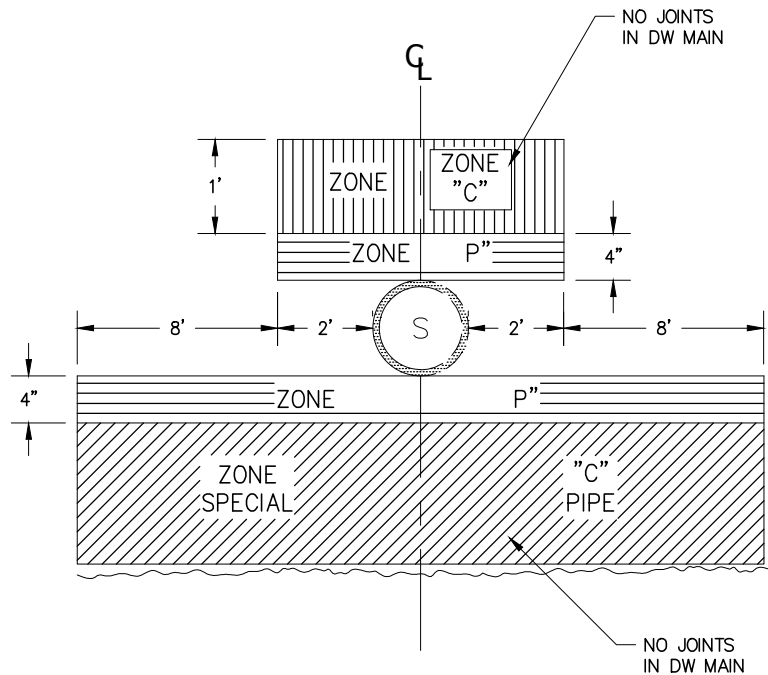


DOMESTIC WATER (DW) MAIN
PARALLEL TO SEWER MAIN



DOMESTIC WATER (DW) MAIN
CROSSING SEWER MAIN

SPECIAL CONSTRUCTION REQUIRED FOR SEWER MAINS

- ZONE
 "A" NO DW MAINS PARALLEL TO SEWER MAINS SHALL BE PERMITTED IN THIS ZONE WITHOUT APPROVAL FROM THE PUBLIC WORKS AND UTILITIES DEPARTMENTS.
- "B" DW MAIN SHALL BE CONSTRUCTED OF:
 1. CLASS 52 DUCTILE IRON PIPE WITH HOT DIP BITUMINOUS COATING.
 2. CLASS 200 PRESSURE RATED PLASTIC WATER PIPE (SDR-14).
- "C" DW MAIN SHALL BE CONSTRUCTED OF:
 1. CLASS 52 DUCTILE IRON PIPE WITH HOT DIP BITUMINOUS COATING.
 2. CLASS 200 PRESSURE RATED PLASTIC WATER PIPE (SDR-14). THERE SHALL BE NO JOINTS IN THIS ZONE.
- "P" PROHIBITED. NO DW MAIN SHALL BE CONSTRUCTED IN THIS ZONE.

BASIC SEPARATION STANDARDS

1. PARALLEL CONSTRUCTION: THE HORIZONTAL DISTANCE BETWEEN DW AND SEWER MAINS SHALL BE AT LEAST 10 FEET.
2. PERPENDICULAR CONSTRUCTION (CROSSING): DW MAINS SHALL BE AT LEAST ONE FOOT BELOW SEWER MAIN LINES AND FOUR INCHES ABOVE WHERE LINES MUST CROSS. ANY INSTALLATION WITHIN THESE STANDARDS WILL REQUIRE SPECIAL INSTALLATION REQUIREMENTS AND MUST BE APPROVED BY THE PUBLIC WORKS AND UTILITIES DEPARTMENTS.

FORMER CITY STANDARD PLAN NUMBER (2004 EDITION): STD 533-L

APP. <i>James M. Hinkle</i>	51568	11/24/2020			
CITY ENGINEER	RCE	DATE	NO.	DATE	DESCRIPTION OF REVISIONS

CITY OF NEWPORT BEACH DEPARTMENT OF PUBLIC WORKS

DRAWN: M. ELIAS	SEWER & WATER SEPARATION (EXISTING SEWER)	STANDARD DRAWING NO. 500-B
DATE: 11/3/2020		SHEET 1 OF 1