

1 1/2" OR 2" PVC  
OPTIONAL  
JET PIPES

MUDLINE  
(VARIES)

MUDLINE  
(VARIES)

SHEETPILE PENETRATION

A

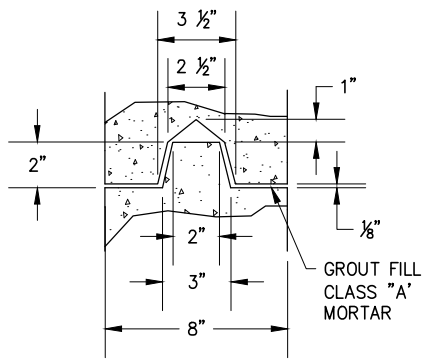
A

15"

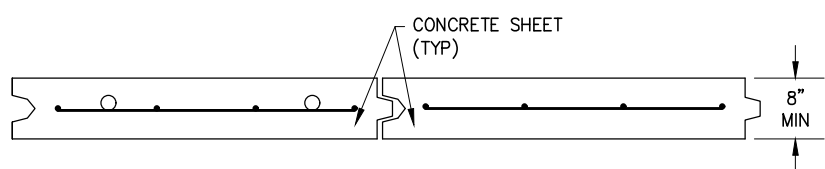
15"

PER ENGINEER

PER ENGINEER



**TYPICAL PANEL JOINT**



**NOTES:**

**SECTION A-A**

1. PANELS TO HAVE A SMOOTH FINISH ON BOTH SIDES.
2. REINFORCING STEEL SHALL HAVE A MINIMUM COVER OF 3" AND BE EPOXY-COATED PER ASTM A-775 OR ASTM A-934. GRADE 60 BARS SHALL BE USED.
3. AS AN OPTION, APPLICANT MAY USE PRESTRESSED CONCRETE SHEETS PER STD 602.
4. USE OF JETTING TECHNIQUES MAY REQUIRE SPECIAL PERMITS AND MITIGATION MEASURES BY LOCAL, STATE AND FEDERAL AGENCIES.
5. CONCRETE: SEE HARBOR DESIGN CRITERIA FOR CONCRETE REQUIREMENTS.
6. PANEL MUST BE DESIGNED BY A CALIFORNIA LICENSED CIVIL OR STRUCTURAL ENGINEER.
7. SEE TABLE NO. 2 IN THE HARBOR DESIGN CRITERIA FOR MINIMUM BULKHEAD ELEVATIONS.

APP. *James M. Hinkle* 51568 11/24/2020  
CITY ENGINEER RCE DATE

NO.	DATE	DESCRIPTION OF REVISIONS

**CITY OF NEWPORT BEACH DEPARTMENT OF PUBLIC WORKS**

DRAWN: P. KHARAZMI  
DATE: 11/3/2020

**PRECAST REINFORCED CONCRETE GROIN PANEL  
(NOT FOR BULKHEAD USE)**

STANDARD DRAWING NO.  
**600**  
SHEET 1 OF 1