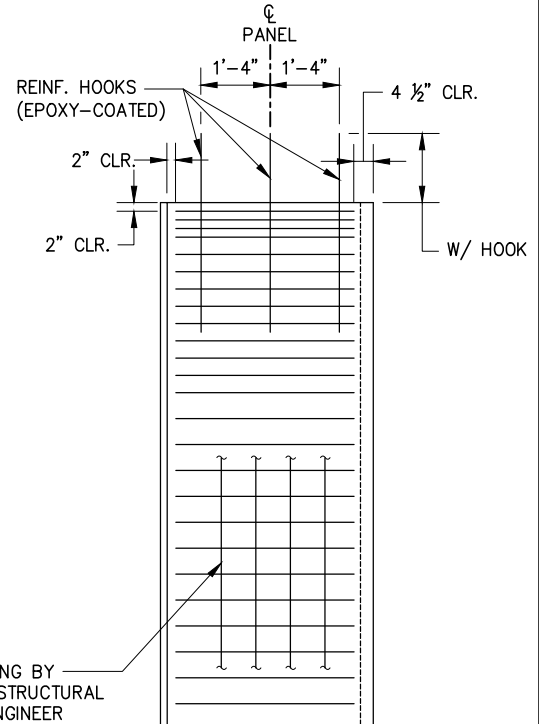
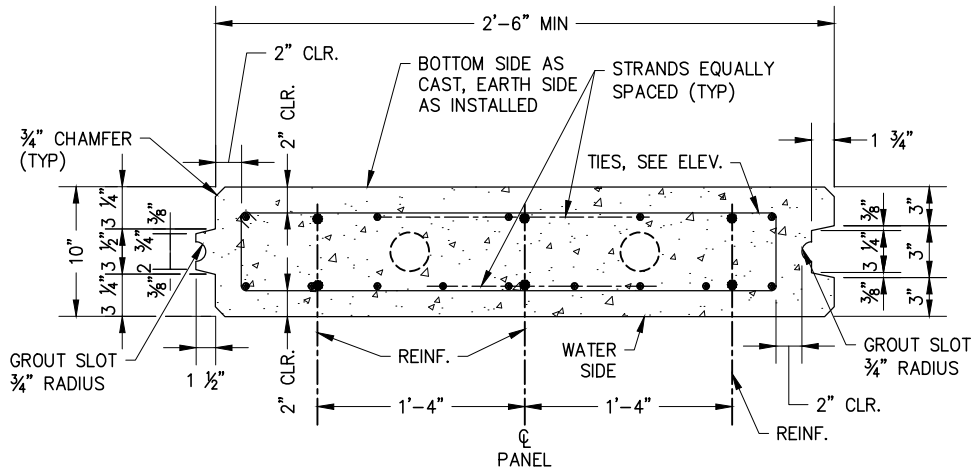


SECTION AT BULKHEAD (1)



REINFORCING BY CIVIL OR STRUCTURAL DESIGN ENGINEER



PRECAST (PRESTRESSED) PANEL SECTION (3)

PRECAST (PRESTRESSED) PANEL ELEVATION (2)
(WATER SIDE)

NOTES:

1. DIMENSIONS AND SIZES NOTED TO BE CONFIRMED OR AMENDED BY THE ENGINEER OF RECORD.
2. CONCRETE: SEE NEWPORT BEACH HARBOR DESIGN CRITERIA FOR CONCRETE REQUIREMENTS.

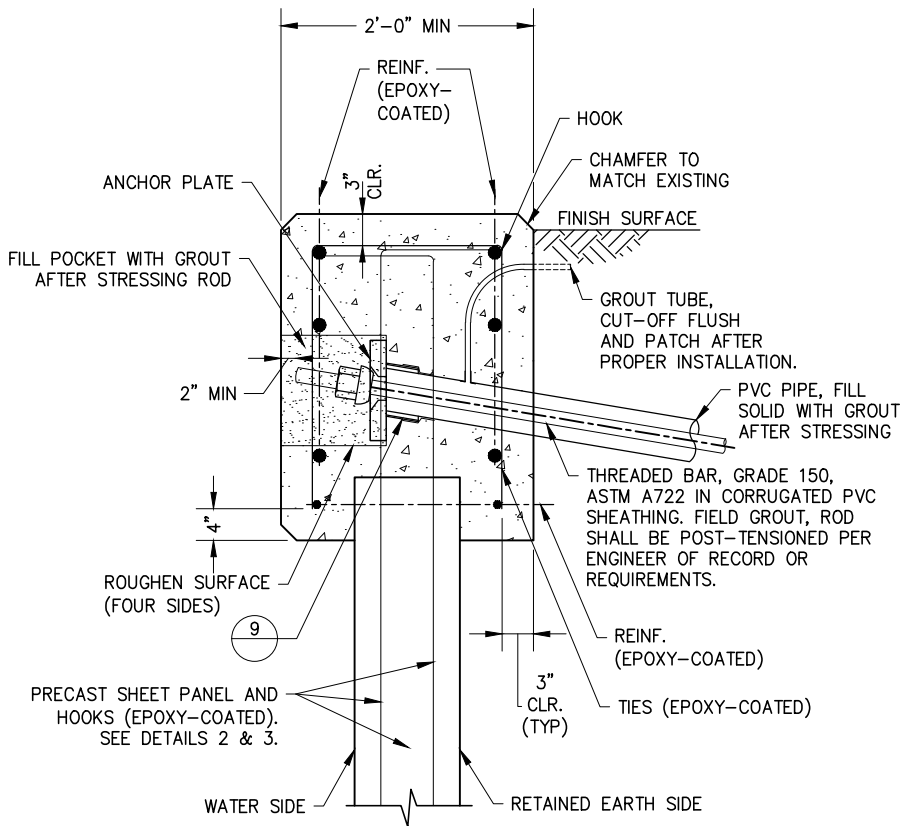
APP. <i>James M. Hinkle</i>	51568	11/24/2020	
CITY ENGINEER	RCE	DATE	

CITY OF NEWPORT BEACH DEPARTMENT OF PUBLIC WORKS

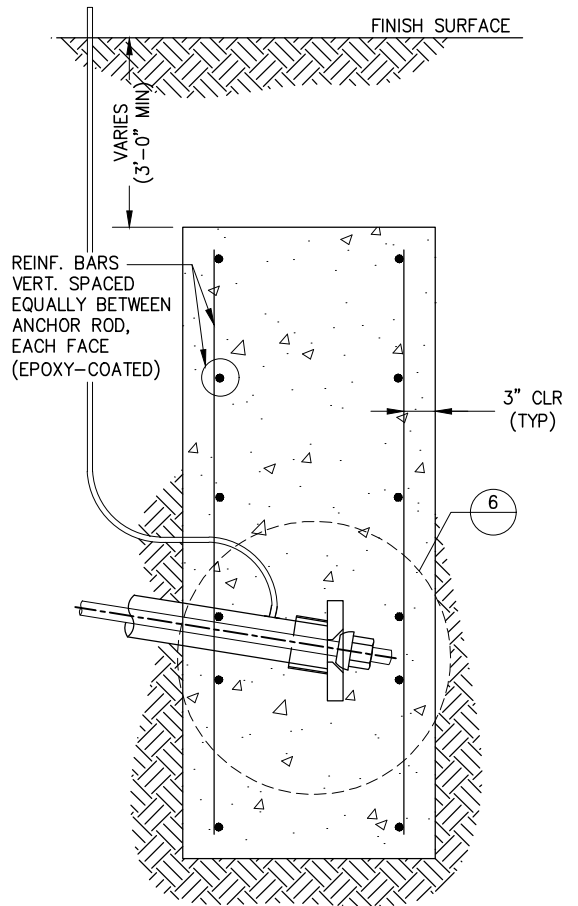
BULKHEAD & PRECAST PANEL SECTION & ELEVATION

DRAWN: P. KHARAZMI
DATE: 11/3/2020

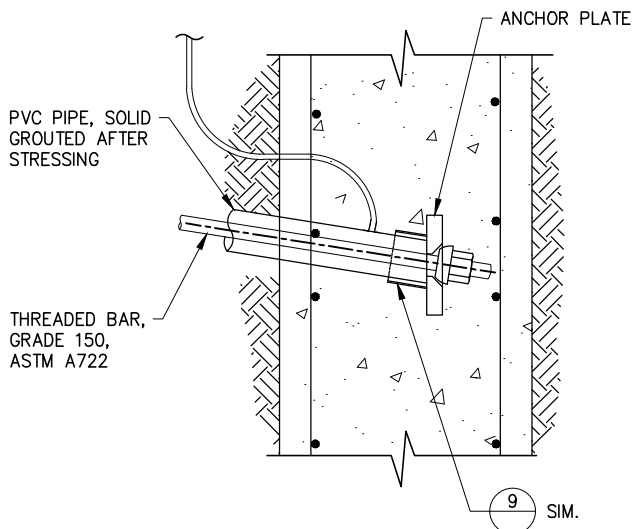
STANDARD DRAWING NO.
602
SHEET 1 OF 3



**SECTION AT BULKHEAD CAP
(STRESSING END)⁽¹⁾** 4



**CONCRETE DEADMAN SECTION
(FIXED END)⁽¹⁾** 5



DETAIL (FIXED END)⁽¹⁾ 6

NOTES:

- DIMENSIONS AND SIZES NOTED TO BE CONFIRMED OR AMENDED BY THE CIVIL OR STRUCTURAL ENGINEER OF RECORD.
- DETAILS OF THREAD BAR, ENCASUREMENT, ANCHOR PLATES, NUTS, WASHERS AND POCKETS MAY DIFFER FROM MANUFACTURER TO MANUFACTURER.
- THE 2'-0" PILE CAP WIDTH IS A MINIMUM DIMENSION AND DOES NOT ALLOW FOR MISALIGNMENT OF CONCRETE PANEL. CONTRACTOR SHALL MAKE ALL NECESSARY ADJUSTMENTS TO THE CAP WIDTH TO MAINTAIN INDICATED CLEARANCES. WIDTH OF CAP SHALL BE MAINTAINED FOR THE ENTIRE LENGTH OF NEW CAP.
- REINFORCEMENT, WALL DIMENSIONS AND THICKNESSES TO BE DESIGNED FOR THE SPECIFIC SITE CONDITIONS AND LOADS.

APP. *James M. Hinkle* 51568 11/24/2020
 CITY ENGINEER RCE DATE

NO.	DATE	DESCRIPTION OF REVISIONS

CITY OF NEWPORT BEACH DEPARTMENT OF PUBLIC WORKS

DRAWN: P. KHARAZMI

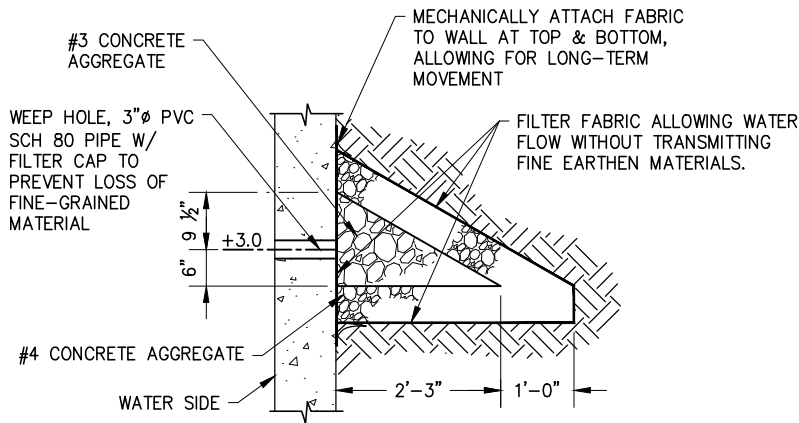
**BULKHEAD CAP & DEADMAN
SECTIONS & DETAIL**

STANDARD DRAWING NO.

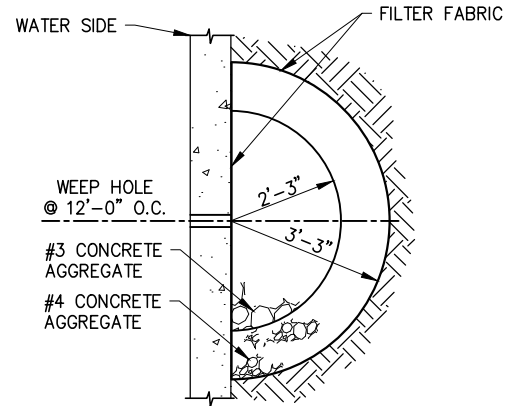
602

DATE: 11/3/2020

SHEET 2 OF 3



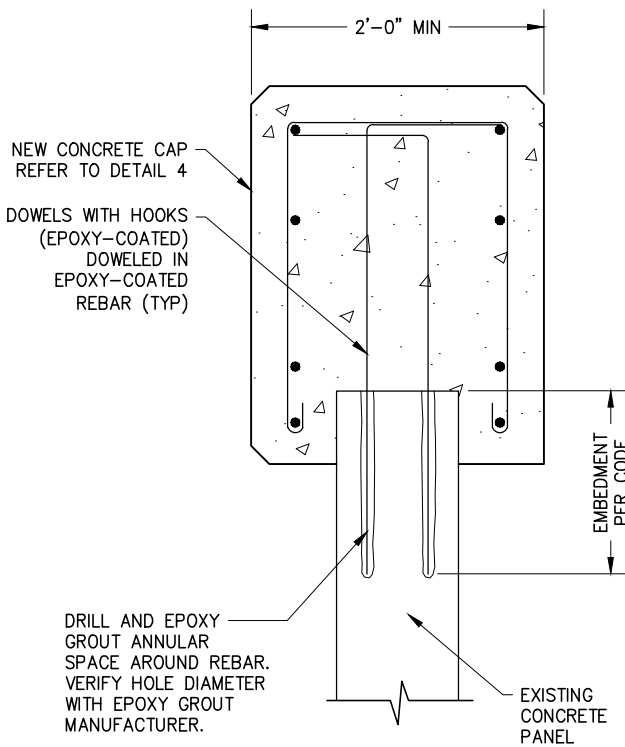
ELEVATION



PLAN

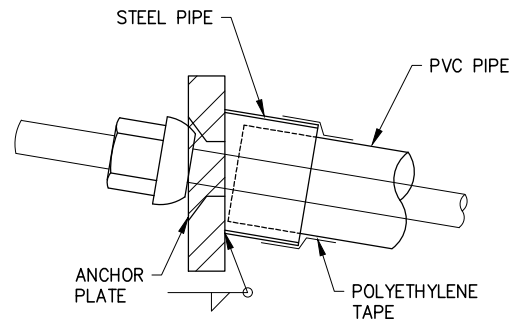
WEEP HOLE SECTION

7



SECTION AT BULKHEAD DOWELS

8



NOTE:

PLATE DETAIL AT STRESSING END (CAP) SHOWN, PLATE DETAIL, SIMILAR AT FIXED END (DEADMAN).

DETAIL

9

APP. <i>James M. Hinkle</i>	51568	11/24/2020			
CITY ENGINEER	RCE	DATE	NO.	DATE	DESCRIPTION OF REVISIONS

CITY OF NEWPORT BEACH DEPARTMENT OF PUBLIC WORKS

BULKHEAD SECTIONS & DETAILS

STANDARD DRAWING NO.
602
SHEET 3 OF 3

DRAWN: P. KHARAZMI
DATE: 11/3/2020