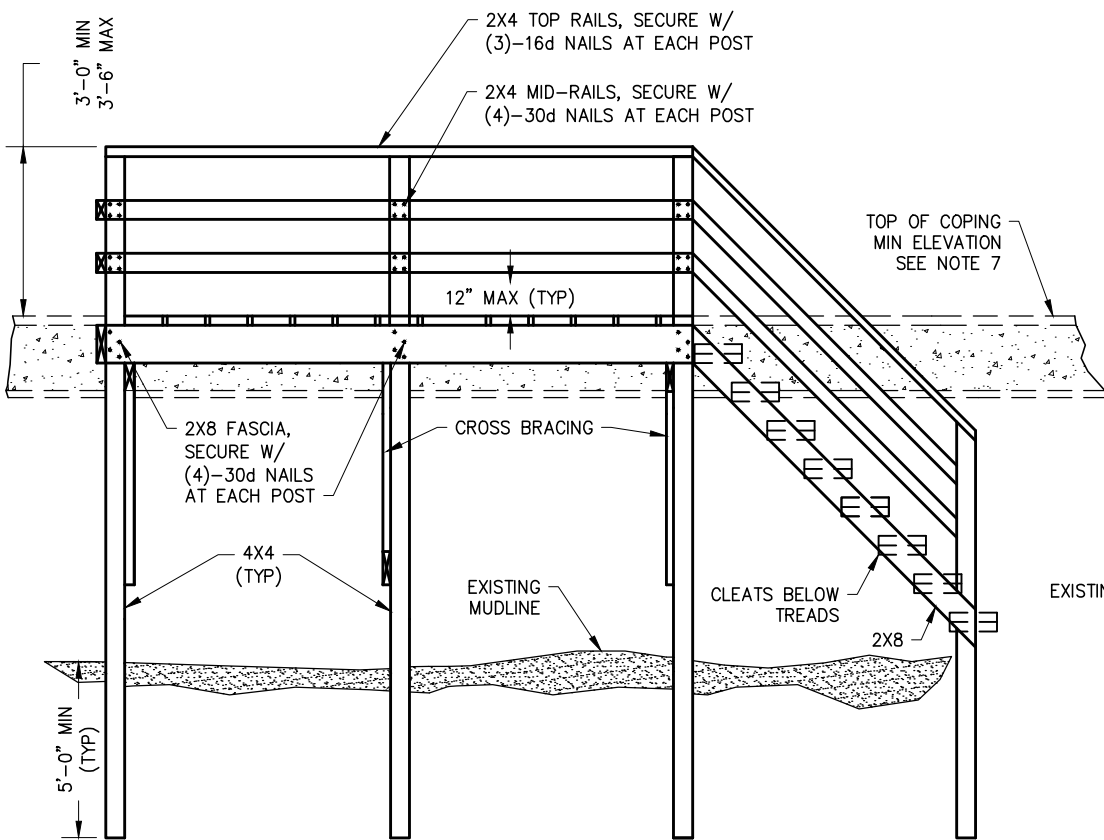
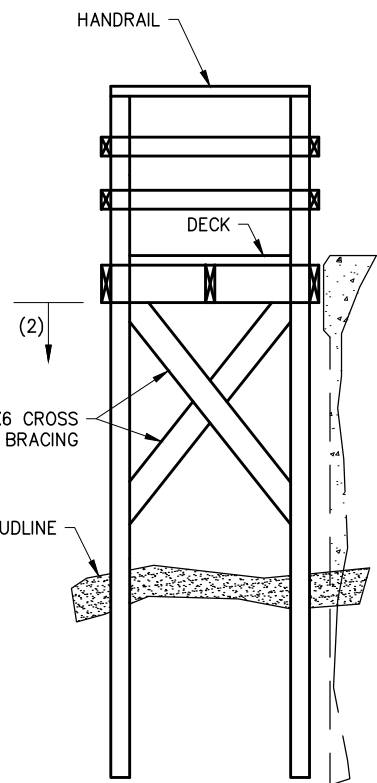


PLAN



ELEVATION



SECTION A-A

NOTES:

1. OVERALL PLATFORM SIZE (NOT INCLUDING STEPS) SHALL NOT BE GREATER THAN 27 SQ. FT.
2. ALL STRUCTURAL PLATFORM SUPPORTING MEMBERS BELOW ELEV 7.5 MLLW SHALL BE SUITABLE FOR MARINE ENVIRONMENT SUBMERSION INTO HARBOR WATERS AS WELL AS SUBTERRANEAN EMBEDMENT INTO THE MUDFLATS. TREATED LUMBER IS NOT ALLOWED FOR THIS SERVICE, UNLESS ENCAPSULATED IN AN IMPERVIOUS MEMBRANE. ALTERNATIVE OR COMPOSITE MATERIALS OR CONSTRUCTION CAN BE SUBMITTED FOR CITY APPROVAL.
3. PLATFORM SHALL NOT BE ANCHORED TO COPING.
4. PRESERVATIVE TREATMENT FOR ALL LUMBER USED ABOVE ELEV 7.5 MLLW SHALL MEET STATE OF CALIFORNIA REQUIREMENTS.
5. ALL METAL CONNECTION PLATES SHALL BE GALVANIZED OR STAINLESS STEEL. ALL FASTENERS (LAG BOLTS, SCREWS AND/OR NAILS) SHALL BE GALVANIZED STEEL, STAINLESS STEEL OR A PRODUCT SPECIFICALLY DESIGNED TO RESIST CORROSION IN THE MARINE ENVIRONMENT, AND APPROVED BY THE CITY.
6. NON-STRUCTURAL MEMBERS MAY BE ALTERNATIVE MATERIALS SUCH AS PLASTIC DIMENSIONAL LUMBER. SUBMIT PRODUCT SPECIFICATIONS TO THE CITY FOR APPROVAL.
7. SEE TABLE NO. 2 IN THE HARBOR DESIGN CRITERIA FOR MINIMUM BULKHEAD ELEVATIONS.

APP.	 CITY ENGINEER	51568 RCE	11/24/2020 DATE	
				NO. DATE DESCRIPTION OF REVISIONS

CITY OF NEWPORT BEACH DEPARTMENT OF PUBLIC WORKS

DRAWN: P. KHARAZMI	<h1>GRAND CANAL - PLATFORM & STEPS</h1>	STANDARD DRAWING NO. <h2>603</h2> SHEET 1 OF 1
DATE: 11/3/2020		