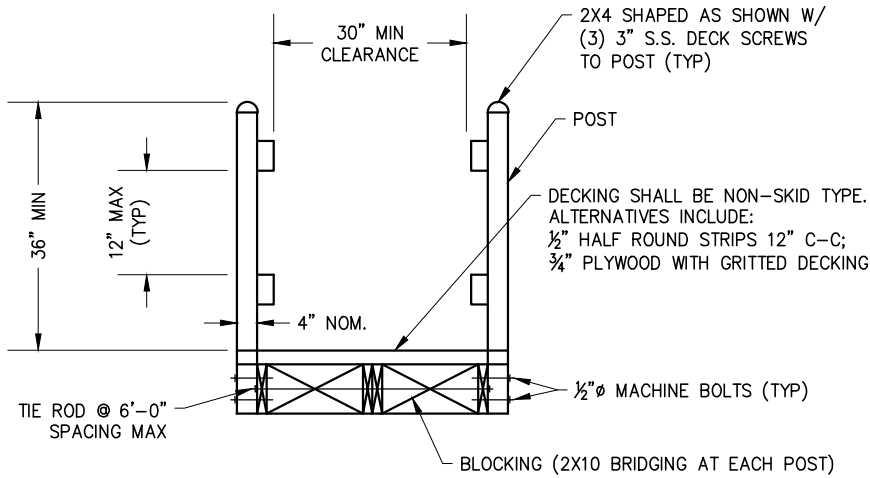


**GANGWAY SIDE ELEVATION**

(USING STANDARD SAWN LUMBER STRINGERS)  
 (MAX SLOPE FOR RESIDENTIAL USE = 1:2.5)



**SECTION A-A**

**NOTES:**

1. TIMBER SHALL BE SELECT STRUCTURAL DOUGLAS FIR TREATED WITH A STATE OF CALIFORNIA-APPROVED PRESERVATIVE (CALIFORNIA COASTAL COMMISSION AND REGIONAL WATER QUALITY CONTROL BOARD). (ALLOWABLE BENDING STRESS, F<sub>b</sub> = 1500 PSI).
2. FIELD CUTS AND BORED HOLES SHALL RECEIVE A FIELD-APPLIED COAT OF PRESERVATIVE TREATMENT, PER STATE AND FEDERAL GUIDELINES.
3. FASTENERS SHALL BE STAINLESS, HOT-DIP GALVANIZED OR EPOXY-COATED STEEL.
4. WALKING SURFACES SHALL HAVE A SKID-RESISTANT FINISH, SUCH AS UNPAINTED TIMBER, GRIT ON TIMBER, OR OTHER SURFACING DEEMED APPROPRIATE FOR THE INTENDED SERVICE BY THE CITY.
5. NON-STRUCTURAL MEMBERS MAY BE ALTERNATIVE MATERIALS SUCH AS COMPOSITE DIMENSIONAL LUMBER. SUBMIT PRODUCT SPECIFICATIONS TO THE CITY FOR APPROVAL.
6. OPTIONAL GANGWAY TYPES:  
 ALUMINUM GANGWAYS WITH NON-SKID WALKING PLANKS ARE RECOMMENDED AS A SUBSTITUTE FOR THE DETAILS NOTED IN THIS STANDARD. ALUMINUM GANGWAYS ARE NORMALLY PROVIDED BY QUALIFIED DESIGN/BUILD ALUMINUM FABRICATORS.
7. FOR LENGTHS OVER 26', APPLICANT TO PROVIDE STRUCTURAL ENGINEERING CALCULATIONS.

APP. <i>James M. Hinkle</i>	51568	11/24/2020			
CITY ENGINEER	RCE	DATE	NO.	DATE	DESCRIPTION OF REVISIONS

**CITY OF NEWPORT BEACH DEPARTMENT OF PUBLIC WORKS**

DRAWN: P. KHARAZMI	<b>SINGLE OR JOINT RESIDENTIAL USE GANGWAY</b>	STANDARD DRAWING NO.
DATE: 11/3/2020		<b>604</b>
		SHEET 1 OF 1