





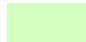





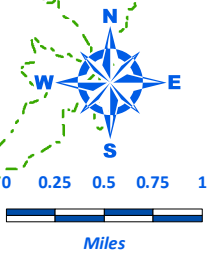
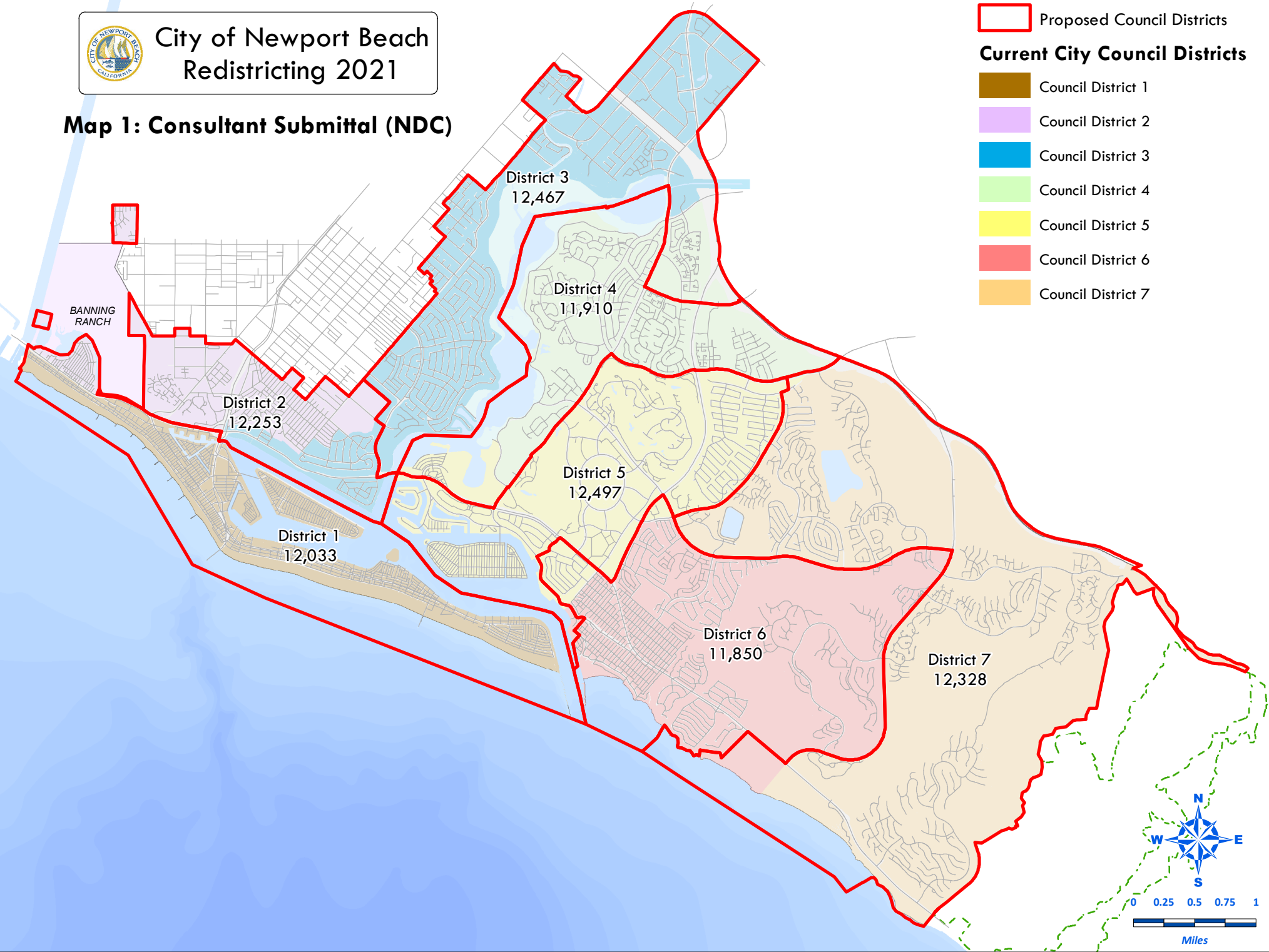
# City of Newport Beach Redistricting 2021

## Map 1: Consultant Submittal (NDC)

 Proposed Council Districts

**Current City Council Districts**

-  Council District 1
-  Council District 2
-  Council District 3
-  Council District 4
-  Council District 5
-  Council District 6
-  Council District 7



**City of Newport Beach - Map 1: Consultant submittal**

District		1	2	3	4	5	6	7	Total
<b>2020</b>	2020 Adj Pop	12,033	12,253	12,467	11,910	12,497	11,850	12,328	85,338
	Deviation from ideal	-158	62	276	-281	306	-341	137	647
	% Deviation	-1.30%	0.51%	2.26%	-2.31%	2.51%	-2.80%	1.12%	5.31%
2020 Total Pop	% Hisp	10%	16%	12%	10%	7%	7%	7%	10%
	% NH White	82%	72%	72%	75%	82%	79%	66%	75%
	% NH Black	1%	1%	2%	1%	1%	1%	1%	1%
	% Asian-American	5%	7%	10%	11%	8%	11%	24%	11%
Citizen Voting Age Pop	Total	11,553	9,563	8,740	9,470	8,850	9,712	9,371	67,259
	% Hisp	11%	9%	10%	6%	5%	5%	4%	7%
	% NH White	85%	81%	79%	84%	90%	86%	74%	83%
	% NH Black	1%	2%	2%	1%	1%	1%	0%	1%
	% Asian/Pac.Isl.	3%	6%	9%	8%	3%	7%	21%	8%
Voter Registration (Nov 2020)	Total	8,966	8,227	9,018	8,515	8,784	9,552	8,668	61,730
	% Latino est.	5%	9%	7%	5%	3%	4%	4%	5%
	% Spanish-Surnamed	5%	9%	7%	5%	3%	4%	4%	5%
	% Asian-Surnamed	2%	3%	4%	5%	3%	5%	13%	5%
	% Filipino-Surnamed	0%	0%	1%	0%	0%	0%	1%	0%
	% NH White est.	90%	86%	87%	89%	93%	90%	82%	88%
Voter Turnout (Nov 2018)	Total	5,922	5,054	6,122	5,753	6,212	6,891	5,608	41,562
	% Latino est.	4%	7%	6%	4%	3%	3%	3%	4%
	% Spanish-Surnamed	4%	6%	6%	4%	3%	3%	3%	4%
	% Asian-Surnamed	2%	3%	3%	4%	2%	4%	10%	4%
	% Filipino-Surnamed	0%	0%	1%	0%	0%	0%	1%	0%
	% NH White est.	92%	89%	89%	91%	94%	91%	86%	90%
Voter Turnout (Nov 2020)	Total	7,855	7,112	8,124	7,585	7,986	8,723	7,806	55,191
	% Latino est.	5%	9%	7%	5%	3%	3%	4%	5%
	% Spanish-Surnamed	5%	8%	6%	5%	3%	3%	4%	5%
	% Asian-Surnamed	2%	3%	4%	5%	3%	5%	12%	5%
	% Filipino-Surnamed	0%	0%	1%	0%	0%	0%	1%	0%
	% NH White est.	91%	87%	88%	89%	93%	90%	83%	89%
ACS Pop. Est.	Total	13,107	12,100	11,933	13,050	10,916	12,014	12,421	85,541
	Age								
Age	age0-19	9%	18%	24%	22%	17%	17%	20%	18%
	age20-60	63%	60%	53%	51%	41%	42%	49%	52%
	age60plus	28%	23%	22%	27%	42%	41%	32%	30%
Immigration	immigrants	9%	11%	13%	16%	12%	14%	28%	15%
	naturalized	59%	57%	63%	58%	65%	76%	79%	68%
Language spoken at home	english	90%	83%	83%	81%	89%	87%	70%	83%
	spanish	6%	9%	9%	4%	3%	3%	3%	5%
	asian-lang	1%	2%	3%	5%	3%	5%	10%	4%
	other lang	3%	6%	5%	9%	5%	5%	17%	7%
Language Fluency	Speaks Eng. "Less than Very Well"	3%	3%	4%	4%	2%	1%	6%	3%
Education (among those age 25+)	hs-grad	30%	27%	26%	24%	23%	20%	19%	24%
	bachelor	35%	41%	39%	42%	41%	41%	35%	39%
	graduatedegree	23%	21%	26%	27%	29%	31%	38%	28%
Child in Household	child-under18	11%	17%	31%	24%	18%	19%	26%	21%
Pct of Pop. Age 16+	employed	66%	71%	68%	61%	56%	54%	57%	62%
Household Income	income 0-25k	12%	10%	12%	12%	10%	9%	9%	11%
	income 25-50k	10%	9%	11%	15%	7%	7%	6%	9%
	income 50-75k	9%	18%	8%	5%	12%	9%	7%	10%
	income 75-200k	39%	43%	40%	41%	37%	30%	31%	37%
	income 200k-plus	31%	21%	28%	27%	33%	44%	46%	33%
Housing Stats	single family	67%	42%	60%	56%	62%	84%	82%	64%
	multi-family	33%	58%	40%	44%	38%	16%	18%	36%
	rented	49%	60%	45%	52%	47%	25%	25%	44%
	owned	51%	40%	55%	48%	53%	75%	75%	56%

Total population data from the 2020 Decennial Census. Surname-based Voter Registration and Turnout data from the California Statewide Database. Latino voter registration and turnout data are Spanish-surname counts adjusted using Census Population Department undercount estimates. NH White and NH Black registration and turnout counts estimated by NDC. Citizen Voting Age Pop., Age, Immigration, and other demographics from the 2015-2019 American Community Survey and Special Tabulation 5-year data.