



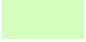



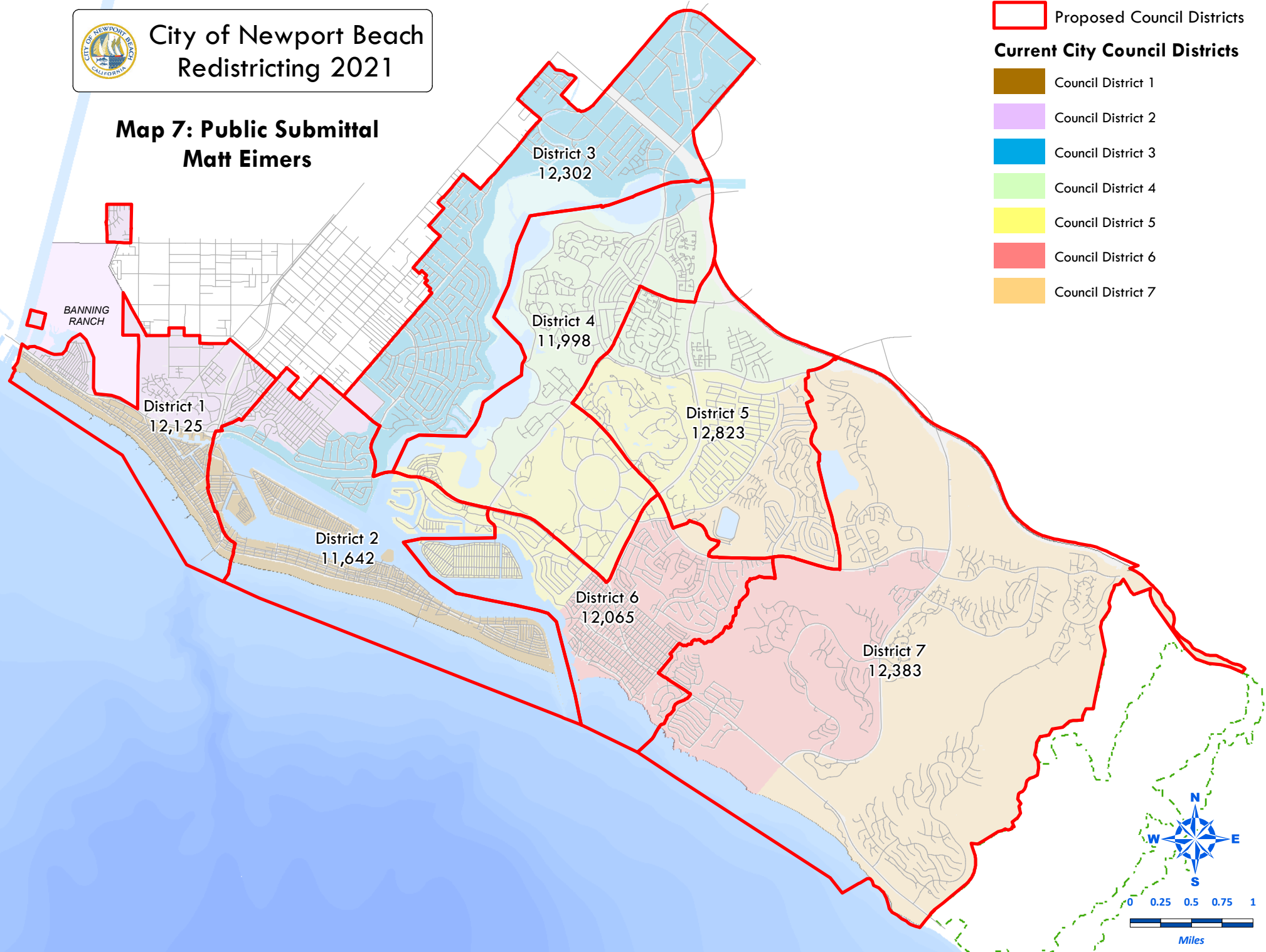




City of Newport Beach Redistricting 2021

Map 7: Public Submittal Matt Eimers

-  Proposed Council Districts
- Current City Council Districts**
-  Council District 1
-  Council District 2
-  Council District 3
-  Council District 4
-  Council District 5
-  Council District 6
-  Council District 7



City of Newport Beach - Map 7: Public submittal

District		1	2	3	4	5	6	7	Total
2020	2020 Adj Pop	12,125	11,642	12,302	11,998	12,823	12,065	12,383	85,338
	Deviation from ideal	-66	-549	111	-193	632	-126	192	1,181
	% Deviation	-0.54%	-4.50%	0.91%	-1.58%	5.18%	-1.03%	1.57%	9.69%
2020 Total Pop	% Hisp	16%	8%	13%	10%	8%	7%	7%	10%
	% NH White	74%	84%	72%	76%	76%	84%	64%	75%
	% NH Black	1%	1%	2%	1%	1%	1%	1%	1%
	% Asian-American	6%	5%	10%	11%	12%	6%	25%	11%
Citizen Voting Age Pop	Total	11,293	9,414	8,948	8,350	10,067	9,736	9,450	67,259
	% Hisp	14%	5%	10%	6%	7%	5%	5%	7%
	% NH White	80%	91%	80%	83%	82%	93%	71%	83%
	% NH Black	1%	1%	4%	1%	0%	1%	0%	1%
	% Asian/Pac.Isl.	5%	3%	6%	8%	10%	2%	23%	8%
Voter Registration (Nov 2020)	Total	8,088	9,022	8,530	8,435	9,298	9,862	8,495	61,730
	% Latino est.	9%	4%	8%	6%	4%	4%	4%	5%
	% Spanish-Surnamed	8%	4%	7%	6%	4%	4%	4%	5%
	% Asian-Surnamed	3%	2%	4%	4%	6%	3%	14%	5%
	% Filipino-Surnamed	0%	0%	1%	1%	0%	0%	1%	0%
	% NH White est.	87%	92%	85%	89%	90%	92%	81%	88%
Voter Turnout (Nov 2018)	Total	4,904	6,331	5,707	5,445	6,489	7,082	5,604	41,562
	% Latino est.	7%	3%	6%	4%	3%	3%	3%	4%
	% Spanish-Surnamed	7%	3%	6%	4%	3%	3%	3%	4%
	% Asian-Surnamed	2%	2%	3%	3%	5%	2%	10%	4%
	% Filipino-Surnamed	0%	0%	1%	1%	0%	0%	0%	0%
	% NH White est.	89%	93%	88%	91%	92%	93%	86%	90%
Voter Turnout (Nov 2020)	Total	6,974	8,108	7,499	7,527	8,467	8,995	7,621	55,191
	% Latino est.	8%	4%	7%	6%	4%	4%	4%	5%
	% Spanish-Surnamed	8%	4%	7%	5%	4%	3%	4%	5%
	% Asian-Surnamed	3%	2%	4%	4%	6%	3%	13%	5%
	% Filipino-Surnamed	0%	0%	1%	1%	0%	0%	1%	0%
	% NH White est.	88%	92%	86%	89%	90%	92%	82%	89%
ACS Pop. Est.	Total	13,752	11,175	11,911	10,719	13,660	11,697	12,627	85,541
Age	age0-19	14%	13%	22%	18%	24%	15%	21%	18%
	age20-60	66%	50%	58%	47%	46%	41%	50%	52%
	age60plus	20%	37%	20%	35%	30%	44%	29%	30%
Immigration	immigrants	12%	9%	12%	17%	16%	9%	29%	15%
	naturalized	58%	56%	61%	57%	70%	71%	80%	68%
Language spoken at home	english	84%	91%	85%	80%	81%	92%	71%	83%
	spanish	11%	3%	7%	6%	3%	3%	3%	5%
	asian-lang	1%	2%	3%	5%	7%	1%	11%	4%
	other lang	4%	5%	6%	8%	9%	4%	15%	7%
Language Fluency	Speaks Eng. "Less than Very Well"	3%	2%	4%	4%	4%	1%	5%	3%
Education (among those age 25+)	hs-grad	30%	27%	28%	25%	24%	20%	17%	24%
	bachelor	37%	40%	37%	43%	38%	42%	38%	39%
	graduatedegree	21%	26%	24%	25%	30%	30%	38%	28%
Child in Household	child-under18	17%	15%	25%	18%	27%	15%	29%	21%
Pct of Pop. Age 16+	employed	74%	58%	71%	60%	57%	55%	58%	62%
Household Income	income 0-25k	12%	8%	11%	14%	12%	10%	8%	11%
	income 25-50k	9%	10%	10%	15%	9%	8%	5%	9%
	income 50-75k	11%	9%	16%	9%	6%	12%	7%	10%
	income 75-200k	44%	39%	38%	43%	37%	33%	28%	37%
	income 200k-plus	24%	34%	25%	20%	37%	38%	52%	33%
Housing Stats	single family	55%	65%	53%	44%	65%	84%	85%	64%
	multi-family	45%	35%	47%	56%	35%	16%	15%	36%
	rented	56%	43%	52%	62%	39%	32%	19%	44%
	owned	44%	57%	48%	38%	61%	68%	81%	56%

Total population data from the 2020 Decennial Census. Surname-based Voter Registration and Turnout data from the California Statewide Database. Latino voter registration and turnout data are Spanish-surname counts adjusted using Census Population Department undercount estimates. NH White and NH Black registration and turnout counts estimated by NDC. Citizen Voting Age Pop., Age, Immigration, and other demographics from the 2015-2019 American Community Survey and Special Tabulation 5-year data.