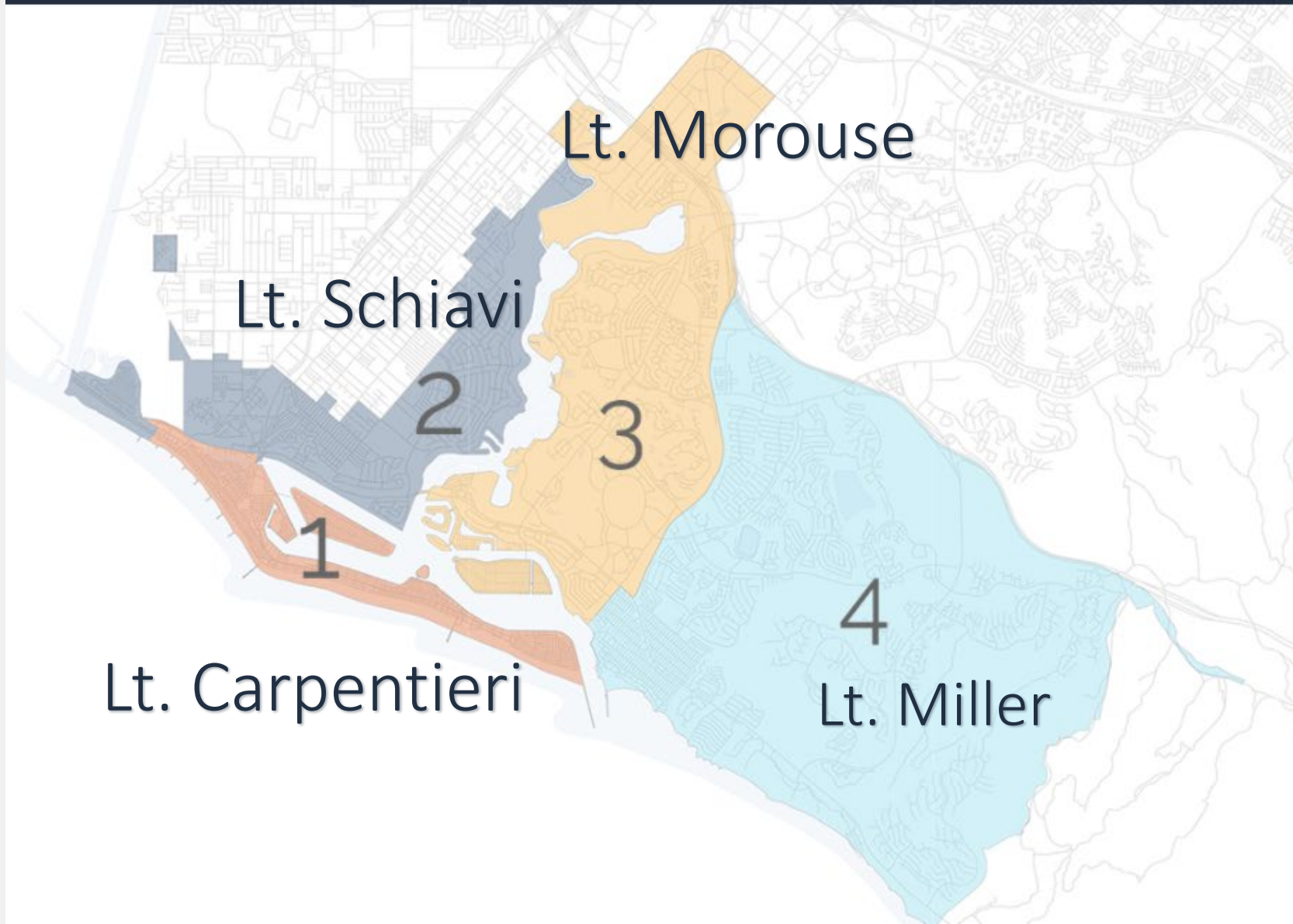




Public Safety Update – Area 1

Lieutenant Peter Carpentieri





The Peninsula

1

The Wedge, the Fun Zone, Balboa Pier, Newport Pier, Lido Isle

Newport West

2

Santa Ana River Jetty, Hoag Hospital, Newport Harbor High School, Mariner's Mile

Newport Center

3

Fashion Island, Balboa Island, Back Bay, Civic Center, Corona del Mar High School

Newport East

4

Lookout Point, Corona del Mar Main Beach, Newport Coast, Coastal Peak Park, Crystal Cove

Area 1 – Crime Update

- Part 1 crimes defined:
 - Violent (Homicide, Robbery, Rape, Aggravated Assault)
 - Non-Violent (Burglary, Theft, Auto Theft, Arson)
- YTD, we've had 175 Part 1 crimes in Area 1
 - About a 2% *increase* from 2021, but...
 - that's actually a 2% *decrease* vs. the 5-year average
- What you see in Area 1 is more or less stable crime rates over a long period of time



Area 1 – Crime Update – Good news

- Garage burglaries, which really began to spike in 2020, have begun to trend in the other direction (15 YTD vs. 18 in 2020 & 23 in 2021)
 - Appreciate resident diligence with securing their garages
- Although there has been an uptick in residential burglaries city-wide (about 20% increase vs. 2021), Area 1 specifically has not been part of that trend (9 YTD)
- Burglary/Theft from Motor Vehicles at a 5-year low (31 YTD)
- Made 392 arrests YTD (71 felonies & 321 misdemeanors)
 - Many “violent” crime offenders swiftly arrested by patrol or detectives
 - Area 1 has the lowest crime per Area, but the highest # of arrests



Area 1 – Crime Update – Not so good news

- Bike thefts are up 146.7% YTD
 - 37 bikes stolen in 2022
 - 15 were stolen last year
 - The average # stolen by this point over the last 5 years is about 20
 - Bicycles are often the property stolen during garage burglaries
- Lack of significant penalties and the proliferation of expensive e-bikes often left unattended (albeit many times secured!) in a publicly accessible area makes the risk vs. reward equation for thieves favorable



Area 1 – Crime Update – Ways to deal with Bike Thefts

- What is NBPD doing about it?
 - Detective Follow-Up
 - Directed Enforcement
 - Chronic Offender Identification
 - Bait Bike Operations
 - Crime Prevention (i.e. Neighborhood Watch, Notices, etc.)
- What can the community do about it?
 - Avoid leaving bikes unattended and/or visible to the public
 - Invest in a high-quality bike lock
 - Ensure garage roll-up doors and any exterior access doors are secured
 - Project 529 bike registration



Area 1 – Traffic Update – Collision Stats

- In 2021, we had 188 reported traffic collisions total (65 DUI-related)
- In 2021, YTD through mid-July, we had 111 traffic collisions (36 DUI-related)
- In 2022, YTD through the same period, we have about 74 (22 DUI-related)
- DUI arrests are noticeable down (108 vs. 38); not a bad thing as it is consistent with collision data.
 - But...DUI is still the leading PCF (Primary Collision Factor)
 - We've been awarded our largest grant ever (\$350,000) from OTS (Office of Traffic Safety) for DUI enforcement (checkpoints, DUI cars, etc.)

*Reminder – many minor, non-injury TC's resolve through an exchange of information, not a traffic collision report



Area 1 – Traffic Update – Trends per our Traffic Investigators

- Seeing many electric motorcycles (different than “e-bikes”)
 - Bicycles need pedals, a motorcycle has fixed pegs
 - Motorcycle needs a motorcycle endorsement on a Class C license, helmet, reg/ins
- E-bicyclists 17 and under must wear a helmet and follow same rules as a bicyclist
- Traffic personnel are looking into a code enforcement approach to rental companies renting electric motorcycles to customers without proper license
- We’ve expanded our Traffic Division this past year, adding two more traffic investigators who work a “hybrid” assignment
 - They ride motors, help to combat problem areas, and add more evening coverage



Area 1 – Traffic Update – New Reporting Tool

Report a Traffic Concern on the newly-designed NBPD website:



The screenshot shows the Newport Beach Police Department (NBPD) website. The URL in the browser is nbpd.org/what-we-do/services/report-a-traffic-concern. The website has a navigation bar with links: WHO WE ARE, WHAT WE DO, WHO WE SERVE, WHAT'S NEW, and a search icon. Below the navigation bar is a sidebar menu with the following items: SERVICES (expanded), ALARMS, ANIMAL CONTROL, BUSINESS SECURITY, CLEARANCE LETTERS, FINGERPRINTING, HOME SECURITY INSPECTIONS, MAKE A REPORT, MESSAGE PERMITS, PROPERTY, RECORDS REQUESTS, REGISTRANTS, REPORT A TRAFFIC CONCERN (highlighted), TICKET SIGN-OFF, VACATION CHECK REQUEST, VEHICLE IMPOUNDS AND RELEASES, INFORMATION, and PROGRAMS. The main content area is titled 'REPORT A TRAFFIC CONCERN' and includes a breadcrumb trail: 'What We Do > Services >'. Below the title are links for 'Font Size', 'Share & Bookmark', 'Feedback', and 'Print'. The text instructs users to 'Use the form below to let us know of any traffic concerns you may have. Please note this form should be used to report **ongoing issues** or **chronic violations**, not individual incidents.' There are two input fields: 'Location of Traffic Issue/Concern' and 'Description of Traffic Issue/Concern'. At the bottom, it says 'Please fill out your contact information below.'



NEWPORT BEACH POLICE DEPARTMENT

Area 1 – Traffic Update – Boardwalk Specific

2021 – 11 Collisions on the Boardwalk

- Collision Type
 - 6 were “solo” accidents (i.e. bicyclist lost control; no other person/bicyclist struck)
 - 2 were bicyclist vs. bicyclists
 - 2 were bicyclists vs. pedestrians
 - interestingly, in these two collisions, the *pedestrian* was determined to be at fault for the collision, and injuries were minor)
 - 1 bicycle vs. fixed object in which the object fell and hit a person nearby (fortunately the injury was only a complaint of pain)
- Injury Type
 - 10 minor injuries (i.e. complaints of pain, abrasions, lacerations)
 - 1 serious injury (loss of consciousness; this was a “solo” bicycle accident)



Area 1 – Traffic Update – Boardwalk Specific

2022 YTD through April 20th – 1 Collision on the Boardwalk

- Collision Type
 - 1 bicyclist vs. pedestrian
 - This was a hit and run incident in which the bicyclist was suspected of drinking alcohol
 - Injury Type
 - None
-
- Are there minor collisions that go unreported to the PD?
 - Even if the data is encouraging regarding injury or perhaps serious injury collisions, is this not still a quality of life concern?

Yes to both!



Boardwalk Safety - Ambassadors

- Boardwalk Ambassador Program
 - Patrols the boardwalk and piers between E Street and 36th Street
 - Every Weekend (off-season)
 - Daily Coverage (summer)
 - Extra Coverage (holidays)
- Tally of 2021 contacts...
 - Speeding – 3,299
 - Surreys – 1,102
 - Skateboards – 3,143
 - E-Scooters – 1,899
 - Visitor Assistance (i.e. parking/directions) – 1,609



Boardwalk Safety - Ambassadors

- Major Complaint / Challenges
 - They can't issue citations
 - And as such, are less effective and/or disregarded by some of the public



Boardwalk Safety - Ambassadors

- Boardwalk Ambassador Program

2nd Quarter Activity per day comparison:

| Activity per Day | 2021 | 2022 |
|------------------|------|------|
| Speeding | 48.1 | 36.9 |
| Surreys | 15.4 | 7.0 |
| Skateboards | 43.5 | 31.2 |
| E-Scooters | 26.2 | 21.3 |



Boardwalk Safety

- Peninsula Enforcement Team Joint Operations
 - Officers embedded with Ambassadors to support their mission & help establish legitimacy/authority
 - Numerous stops/citations
- E-Bike Enforcement Operation on 7/9/22 10AM-4PM
 - Conducted by NBPD Motors, PET team
 - 198 contacts/stops
 - 82 juvenile contacts
 - 181 bike & 17 ped/skateboard/segways
 - Majority were residents
 - 60 citations/warnings
 - 31 were for speed
 - Bicycle safety pamphlets were provided when appropriate



July 4th 2022 Review

- About 175 officers/deputies deployed on the 4th in Newport Beach
 - Had assistance from Irvine PD, OCSD and CHP
- Doubled the deployment over the July 4th weekend (Fri-Sat-Sun)
- July 4th 1200 to July 5th 0500
 - About 35 arrests & over 165 citations
 - 573 CAD events (calls for service, stops, etc.)
 - 88 or 15% were fireworks related
- July 1st 1200 to July 5th 0500
 - About 74 arrests



July 4th 2022 Review

- For Area 1, tried to focus on the beaches around 8PM on to mitigate firework activity
 - We had at least 8 citations and 2 arrests for fireworks on the 4th
 - Had another fireworks arrest on July 2nd
- Breakdown of fireworks calls for service the last 5 years...

| Year | City-wide | Area 1 | Area 2 | Area 3 | Area 4 |
|------|-----------|--------|--------|--------|--------|
| 2022 | 88 | 36 | 31 | 9 | 12 |
| 2021 | 71 | 24 | 19 | 14 | 14 |
| 2020 | 173 | 60 | 55 | 18 | 40 |
| 2019 | 65 | 19 | 26 | 4 | 16 |
| 2018 | 71 | 25 | 23 | 10 | 12 |



July 4th 2023 Focus

- The holiday falls on a Tuesday next year
- Still will have a substantial deployment
- With crowds and criminal activity relatively under control (as has been the trend in recent years), quality of life issues (notably fireworks) will be even more a priority



Area1 – Homeless Update

- Approximately 7 persons experiencing homelessness in Area 1 that are actively participating in the housing process...
 - Acceptance of help (meeting with CityNet psychologist)
 - First phase (waiting to be matched to housing voucher i.e. EHV, CoC, etc.)
 - Second phase (complete paperwork for housing voucher)
 - Third phase (locating an apartment that will accept the voucher)
 - Moving day!

*Note: this process involves extensive case management and hand-holding, particular for subjects with mental health and/or substance abuse issues



Homeless Update – Shelter / Be Well

- Bridge Shelter Update
 - # housed = 19
 - Currently closed by OCHA for Covid outbreak
 - 14 days with zero positive tests among staff/residents to re-open
- Be Well
 - Continues to be of great assistance to the City & NBPD
 - Outreach, follow-up, transports, etc.



What are the City's resources to address homelessness?

- NBPD – Patrol Officers
- NBPD – Peninsula Enforcement Team – Sergeant Clemente
- NBPD – Homeless Liaison Officer – Officer Carter
- OC Mental Health PERT/CAT – clinician rides with patrol 2 days per week
- CNB Homeless Coordinator – Natalie Basmacıyan
- Public Works – Cleaning/Maintenance/Improvements/Property Removal
- Recreation & Senior Services – Parks, public facilities, restrooms, etc.
- Contracted Staff that connects homeless persons to care/housing
 - City Net – Social service workers deployed to the field
 - Be Well – Trained crisis counselors deployed to the field
 - 7 days per week, 12 hours per day (7AM-7PM)
- Costa Mesa Bridge Shelter – 20 beds available



How are resources used to address homelessness?

- Enforcement
 - Deter criminal behavior and violations of our municipal code
- Emergency Psychiatric Care (i.e. 5150 WIC holds)
- Outreach
 - Medical Services / Mental Health Services
 - Detoxification
 - Family Reunification
 - Shelter Placement
 - Long-term supportive housing assistance
- Environmental Concerns
 - Pressure washing sidewalk and other public areas
 - Removal of bulk property (i.e. abandoned encampment/refuse)



Notable Homeless “Hotspots” in District 1

- Newport Pier
- Balboa Pier
- Marina Park
- Seashore 54th to River Jetty (vehicle-based)



Some Challenges on the Homeless Issue

- Shelter bed availability
 - This is an issue county and state-wide
 - Already an issue pre-pandemic; exacerbated by Covid-lockdowns/requirements
- Martin v. Boise 2018
 - “Camping” not enforceable without shelter bed alternative
- Enforcement works through threat of fines or incarceration
 - Not always a powerful deterrent for members of the homeless community
 - Cases not always filed or dismissed
 - Penalty only comes after filing *and* conviction
 - Even then, penalties may not be as significant as you’d expect (245 PC example)
 - Enforcement deterrents rarely effect a *long-term* change
 - *Regardless, NBPD has done and will continue to do all appropriate enforcement!*

Reminder – *homelessness itself is not a crime!*



More Challenges on the Homeless Issue

- Outreach, housing, mental health services, substance abuse assistance, etc. offers a better chance at effecting a long-term change (now a NBPD focus)
 - As an example, we have had 80+ “street exits” since 2019, but...
 - This process can be time and labor intensive
 - This process almost always requires voluntary participation
- Homeless population can be guarded/distrustful of assistance
 - High frequency of mental health issues/substance abuse present in this community
 - Overcome by rapport, relationships (i.e. HLO)
 - Overcome by non-law enforcement personnel (City Net, Be Well)
- Any municipal actions are highly scrutinized by various interested parties
 - Must ensure we do everything in a lawful, ethical, compassionate, responsible manner
- “Transitory” nature of members of the homeless community



Homelessness Key Takeaways

- Homelessness is a complicated issue
- Crime and quality of life impacts are significant
- Realistically, these impacts can be mitigated but not wholly eliminated
- The experience of homelessness is often sad and tragic – not to be forgotten
- The City of Newport Beach has recognized in recent years a need and expectation to do more, and has invested time and money in resources to help
- NBPD has been a part of that mission working towards long-term solutions
 - Assigning staff homeless-specific responsibilities
 - Educating / training our officers on enforcement/outreach options
 - Developing defensible procedures (i.e. bulk property removal)
 - Collaborating with other CNB staff, contract staff and outside agencies



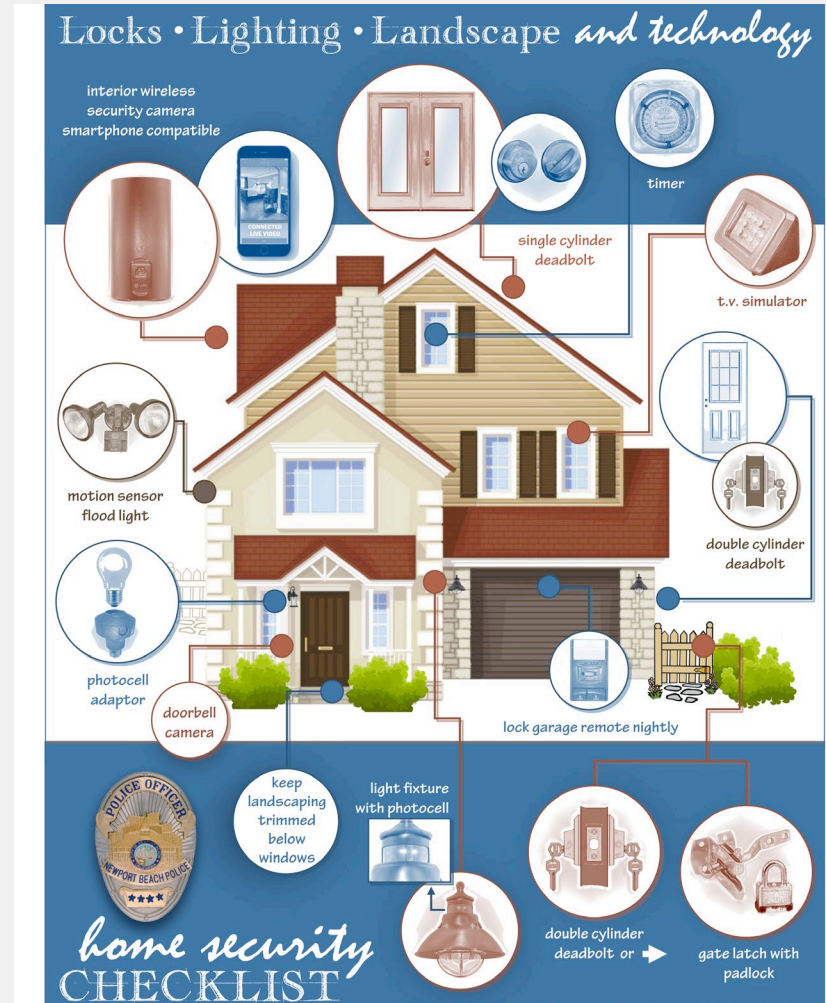
Important Resources/Information re: Homelessness

- Dispatch (non-emergency line): 949-644-3717
 - Be Well can be requested through NBPD Dispatch
- City Net's helpline: 714-451-6198
- CNB Homeless Coordinator: 949-718-1991
- OC Crisis Prevention Hotline: 877-7-CRISIS (877-727-4747)
- Good Giving: newportbeachca.gov/give
 - Say "no" to panhandlers
 - Donations support the City's efforts to provide shelter beds, addiction and mental health treatment, etc.



Important NBPD Resources

- Dispatch 949-644-3717
- NBPD.ORG
 - Calls for Service
 - Crime Prevention and Safety
 - Report a Traffic Problem
- NIXLE.COM
 - Crime Alerts



The background image shows the Newport Beach Police Department building. A large American flag and a City of Newport Beach flag are flying on poles in the foreground. The building's facade features the words "POLICE DEPARTMENT" and the number "870".

QUESTIONS?