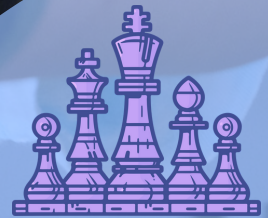


HARBOR VIEW

AFTER CLASS ENRICHMENT PROGRAMS



Winter 2024
Dec 4 - March 8



Play Chess
Every Monday



NEWPORT BEACH RECREATION & SENIOR SERVICES

949-644-3151 | recreation@newportbeachca.gov

NEWPORTBEACHCA.GOV/ACE



MONDAY

Dec 4-March 4

After School Volleyball Clinic

Newport Sports Academy: Kinder-6th | 3:05-4:35 p.m. | \$350 | HV1000

Strategic Chess

Strategic Kids: 1st-6th | 3:15-4:15 p.m. | \$170 | HV1001



TUESDAY

Dec 5-March 5

Painting, Drawing, Printing, and Clay

Lisa Albert: Grade: Kinder-6th | 3:15-4:15 p.m. | \$495 | HV1002

Broadway Star Musical Theater: Harry Potter

Take the Stage: Kinder-6th | 3:15-4:15 p.m. | \$220 | HV1003

Intermediate Skateboarding

Skatedogs: 1st-6th | 3:15-4:45 p.m. | \$352 | HV1004



WEDNESDAY

Dec 6-March 6

Guitar and Ukulele

Green Room Music: 2nd-6th | 1:35-2:35 p.m. | \$325 | HV1005

After School Spanish

Portal Languages: 1st-6th | 1:35-2:35 p.m. | \$220 | HV1006

Skyhawks Tennis

Stack Sports: Kinder-6th | 1:35-2:35 p.m. | \$220 | HV1007

THURSDAY

Dec 7-March 7

Basketball

Core Athletic Training: Kinder-6th | 3:15-4:30 p.m. | \$375 | HV1009

Kids Cooking Academy

Parker-Anderson: 1st-6th | 3:15-4:15 p.m. | \$275 | HV1010



FRIDAY

Dec 8-March 8

Engineering with LEGO

Strategic Kids: 1st-6th | 3:15-4:15 p.m. | \$170 | HV1011

Fit First: Hip Hop and Dance Choreography

Fit First: 1st-6th | 3:15-4:15 p.m. | \$200 | HV1012

**REGISTRATION
OPENS
OCTOBER 30TH**

A \$20 refund fee will be applied to any request made before the start of the second class. No refunds after the second class.