



PUBLIC WORKS

January 2024

Project Fact Sheet

Assessment District 124 – Central Balboa Island

ABOUT THIS PROJECT

The property owners within a roughly 50-block area of Central Balboa Island approved an underground utility assessment district, known as Assessment District No. 124 (AD 124). The City Council held the Public Hearing On July 27, 2021, where ballots were counted and the majority voted “yes” and AD 124 was formed. The Yes vote percentage of 65% was one of the highest on record. The estimated total cost of AD 124 is almost \$33 million.

BENEFITS

Undergrounding overhead utilities will improve aesthetics, safety and reliability of power and communication lines.

CURRENT STATUS

Good News! The bids for Phase 1 came in under the Engineer’s Estimate for this area of the undergrounding effort. City Council awarded the Phase 1 construction contract to International Line Builders, Inc. at the January 9, 2024 Council meeting for just under \$12M with a \$1.2M contingency. Project phasing for this effort will be provided on the City website listed below and when known.

With the exceptional bid received for Phase 1 City Staff believes funding is fully available to complete the project

A total of four different City contractors will be working on the Island thru the year. In addition to Phase 1 contractor, construction within Phase 0 by Hot Line Construction along North Bayfront and Marine has started and will last thru March. The City has also contracted with TE Roberts to complete water main improvements in various alleys ahead of the undergrounding effort. Lastly, sewer improvements are also being completed at various point locations on the Island. Please be patient with us as we know it’s a lot.

Please, **DO NOT ENGAGE AN ELECTRICIAN AT THIS TIME FOR YOUR PRIVATE PROPERTY CONVERSION WORK.** The City will notify you when residential conversion can begin.

STAY INFORMED

Get more information from the City of Newport Beach at: www.newportbeachca.gov/ADstatus, including on project phasing. **If you would like E-mail updates on this please send that request to PWinfo@Newportbeachca.gov to get on the list.**



TENTATIVE SCHEDULE:

- **Construction:**
Construction in Phases, Starting in Winter 2024 thru Spring 2027
Residential Conversions & Cabling- Fall 2025 though 2027
Pole Removal – 2028

FUNDING SOURCE:

- Assessment District Funds

PROJECT CONTACTS:

- Public Works Department
(949) 644-3311
- Michael J. Sinacori
Assistant City Engineer
msinacori@newportbeachca.gov
(949) 644-3342
- Anna Baldenegro
Associate Civil Engineer
abaldenegro@newportbeachca.gov
(949) 644-3034

AD 124 (PHASE 0)
PROJECT LIMITS

ASSESSMENT DISTRICT
BOUNDARY

NORTH BAY FRONT

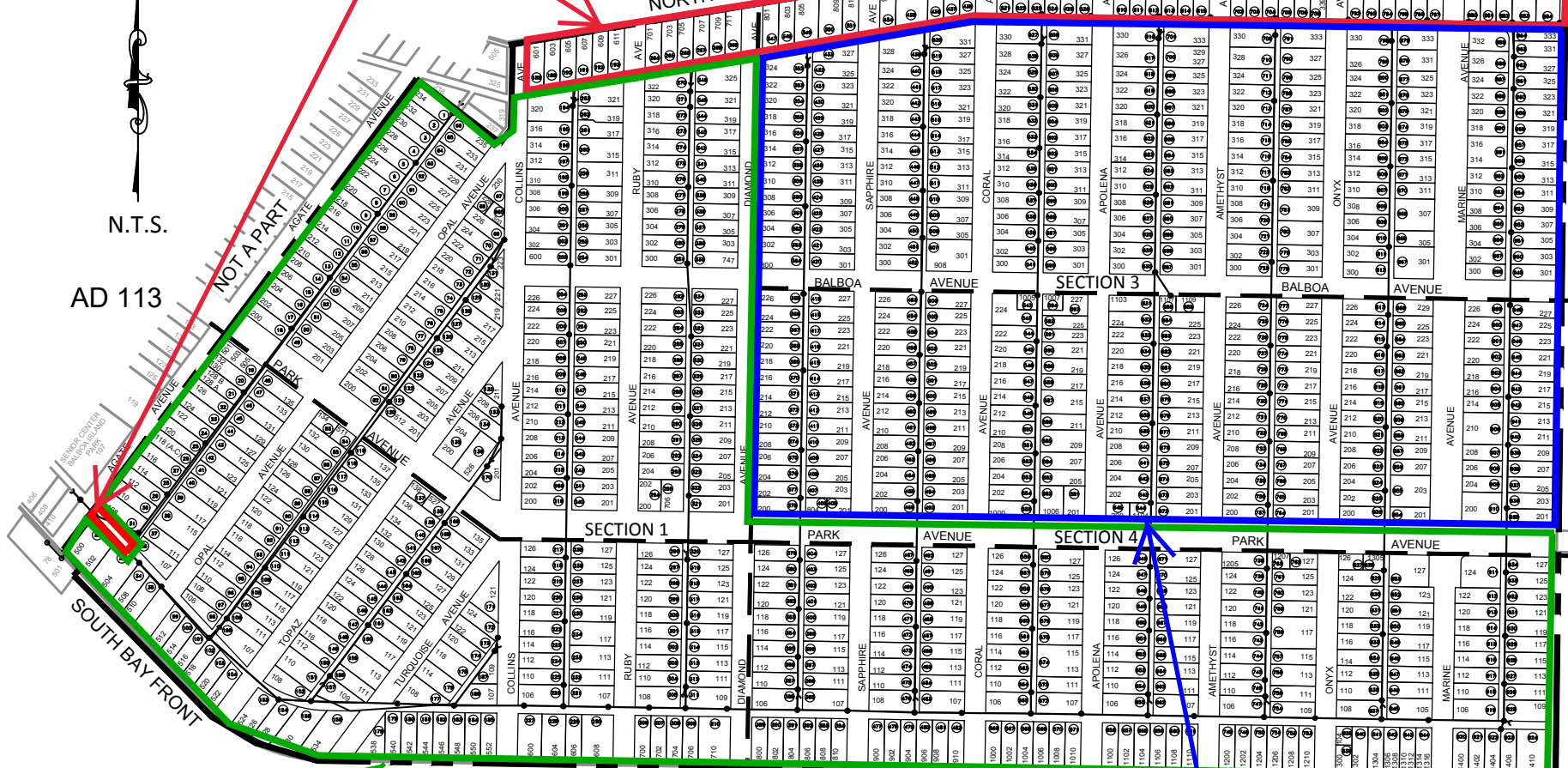


N.T.S.

AD 113

NOT A PART

NORTH BAY FRONT



NOT A PART

GRAND CANAL

SECTION 2

ASSESSMENT DISTRICT
BOUNDARY

SECTION 5

SOUTH BAY FRONT

PHASE 1

PHASE 2