



# **CITY OF NEWPORT BEACH**

## **Fire Department**

### **Fire Prevention Division**

## **GUIDELINES AND STANDARDS**

### **GUIDELINE C.04 – Traffic Calming Devices**

#### **C.01.1 PURPOSE**

The Newport Beach Fire Department (NBFD) is committed to providing quality emergency services to the community as quickly and efficiently as possible. Our goal is to maintain or improve NBFD's average response time. Towards that effort, NBFD uses 5.5 minutes as our evaluation criteria when reviewing the installation of speed cushions that impede our ability to provide emergency services. This guideline provides information pertaining to the creation and maintenance of fire department access roadways, and the evaluation process for speed calming installation requests. This guideline includes:

- Plan submittal processes.
- Definitions
- Dimensions of NBFD approved speed cushions.

#### **C.01.2 SCOPE**

Per the 2025 California Fire Code (CFC) Section 503.4.1, traffic calming devices shall be prohibited unless approved by the fire code official. NBFD amends this section to state "Any traffic calming devices in required access roads when approved by the fire code official, shall be in compliance with the Newport Beach Public Works Department's Neighborhood Traffic Management Policy." These guidelines apply to private streets within NBFD jurisdiction to which emergency response may be necessary. The information contained in this document is intended to assist the applicant in attaining compliance and to ensure that privately owned roadways necessary for emergency response purposes will be always available for use and will not be obstructed in a way that increases emergency response times.

The following definitions are provided to facilitate the consistent application of this guideline, and to provide alternative ideas when applying for traffic calming measurements.

**Fire Department Access Roads** - The means for emergency apparatus to access a facility or structure for emergency purposes. Roadways must extend to within 150 feet of all portions of the exterior of the first floor of any structure and must meet specified criteria for width, pavement characteristics, roadway gradient, turning radius, etc. Fire apparatus access roads are also referred to as fire lanes.

**Speed Cushions** – These devices are designed as small, raised traffic calming devices 6 feet in width with a minimum of 2 feet between the cushions so that a fire engine can straddle them (fire engines will primarily straddle the center speed cushion to allow for maximum clearance on either side). By straddling the cushion, the fire engine is minimally impacted by the cushion and can maintain speed while traveling to the emergency. The speed cushions can be purchased as a ready-made rubber or can be formed from asphalt. Regardless of construction material, the speed cushion must be able to support the load of NBFD fire apparatus with a total weight of 72,000 pounds.

**Gates and Barriers** - Devices that restrict pedestrian and vehicle ingress and egress to and from a facility. Gate and barriers are a separate permissible activity that is reviewed by NBFD in compliance with the CFC and NBFD Guideline C.01.

### **C.01.3 DESIGN REQUIREMENTS**

#### **Traffic Calming Device**

Cushions shall be placed to cover the width of the road, including the minimum 2-foot gaps. Roadway width will determine the number of cushions required. Length and height of cushions varies depending on the desired effect. Cushions with short length and a tall profile can be abrupt and require slower vehicle speeds and may create more sound. Longer and lower profile cushions allow for a smoother crossing with higher speeds and may have less sound associated with passing vehicles. When designing speed cushions, desired travel speed, noise, spacing and roadway characteristics should be taken into consideration. Please see attachments A and B below for specifications.

### **C.01.4 SUBMITTAL REQUIREMENTS**

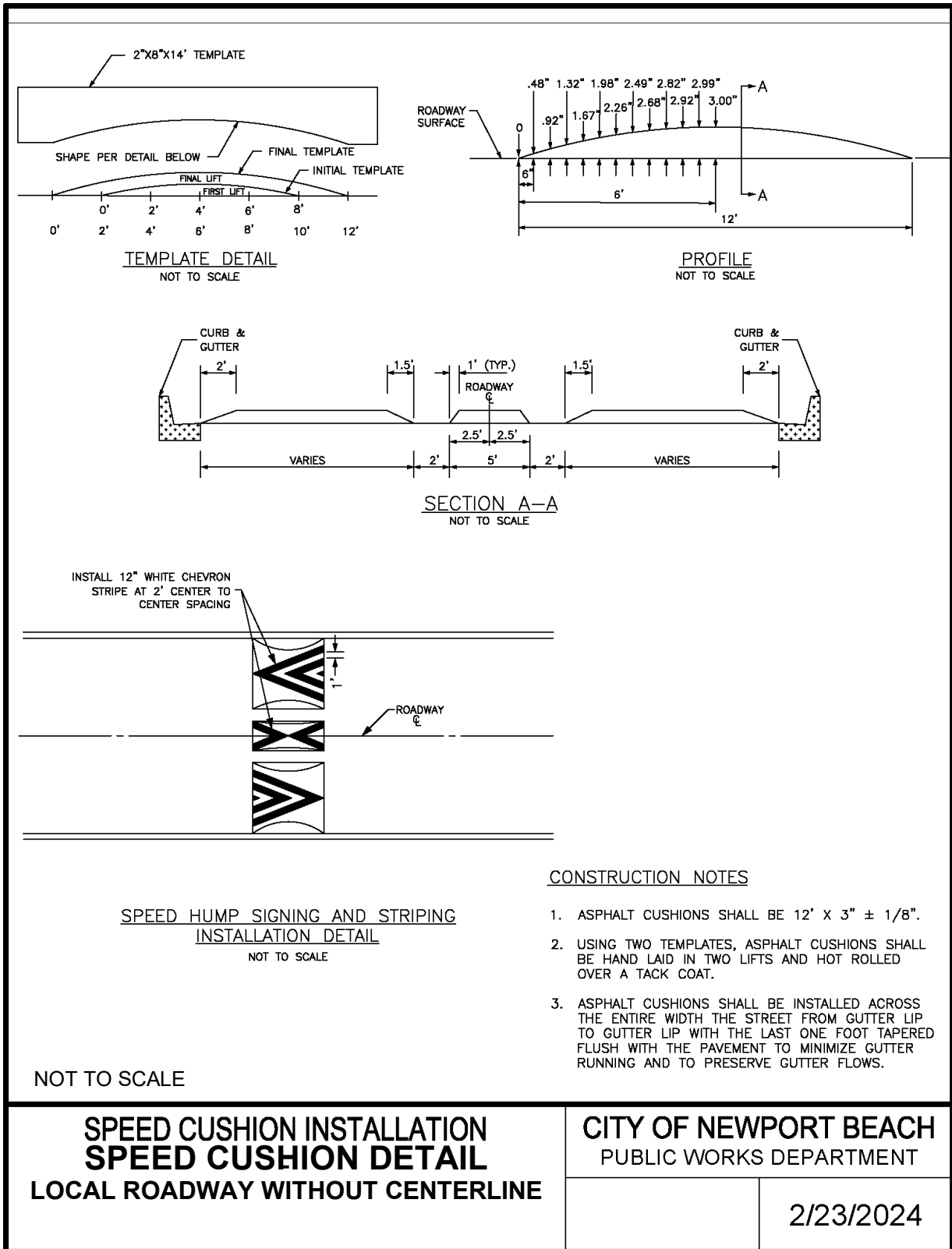
1. **Department Submittals** – An NBFD Worksheet for Fire Permit Application is required to be completed for all requests for the installation of traffic calming devices. It is necessary to come to our office at 100 Civic Center Dr. Newport Beach, to complete the paperwork and submit the following items: Two hard copies of an 18" inch x 24" inch overall site plan of the community will need to be submitted at the City of Newport Beach. The site plan shall indicate locations of any existing speed cushions and proposed locations of new speed cushions.

2. The scope of work shall be indicated in letter form attached to the site plan. The letter needs to indicate if speed cushions are being requested. The letter shall be on the Homeowners Association letterhead (public street requests are generated by the City Traffic Engineer).

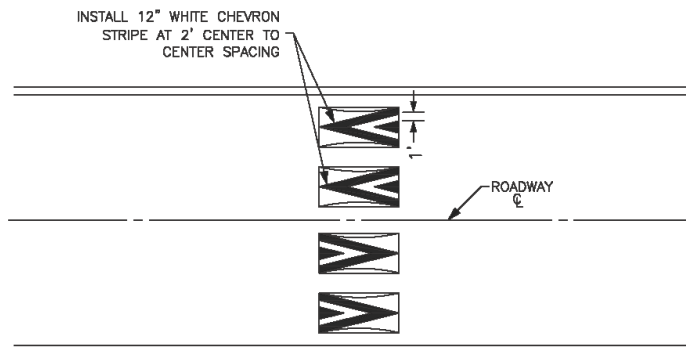
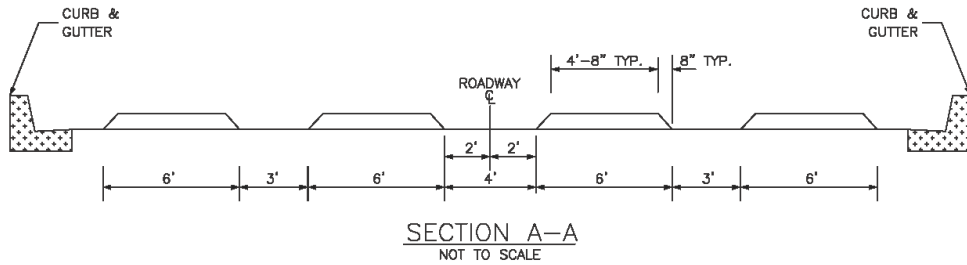
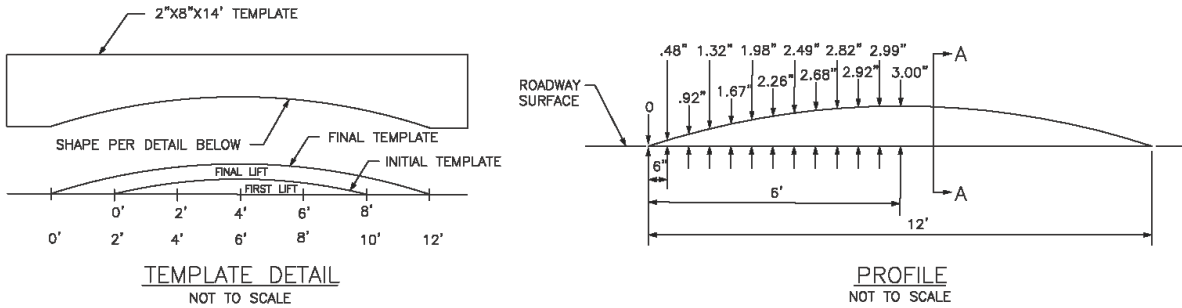
#### **C.01.5 PLAN REVIEW FOR SPEED CUSHIONS**

1. There is a fee for this plan review. This fee covers a plan review, follow up paperwork and an inspection of the speed cushion installation. The City of Newport Beach may require that the City Traffic Engineer review and approve the proposal for traffic calming devices. This could add more time to the approval/denial response time.
2. If the speed cushions are approved, the traffic calming device(s) shall be installed per the approved plan. Once the traffic calming device(s) are installed, the applicant shall contact our inspection scheduling office (contact information is provided in approval letter) to request an inspection of the device(s) to ensure that the traffic calming device(s) are installed per the approved plan.

# ATTACHMENT A



## ATTACHMENT B



### CONSTRUCTION NOTES

1. ASPHALT CUSHIONS SHALL BE 12' X 3"  $\pm$  1/8".
2. USING TWO TEMPLATES, ASPHALT CUSHIONS SHALL BE HAND LAID IN TWO LIFTS AND HOT ROLLED OVER A TACK COAT.
3. ASPHALT CUSHIONS SHALL BE INSTALLED ACROSS THE ENTIRE WIDTH THE STREET FROM GUTTER LIP TO GUTTER LIP WITH THE LAST ONE FOOT TAPERED FLUSH WITH THE PAVEMENT TO MINIMIZE GUTTER RUNNING AND TO PRESERVE GUTTER FLOWS.

NOT TO SCALE

### SPEED CUSHION DETAIL ROADWAY WIDTH 36 FEET AND GREATER

CITY OF NEWPORT BEACH  
PUBLIC WORKS DEPARTMENT

2/23/2024