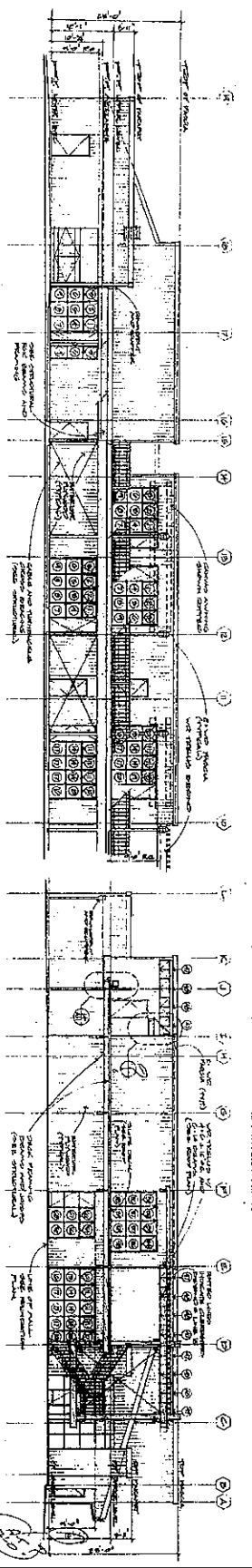
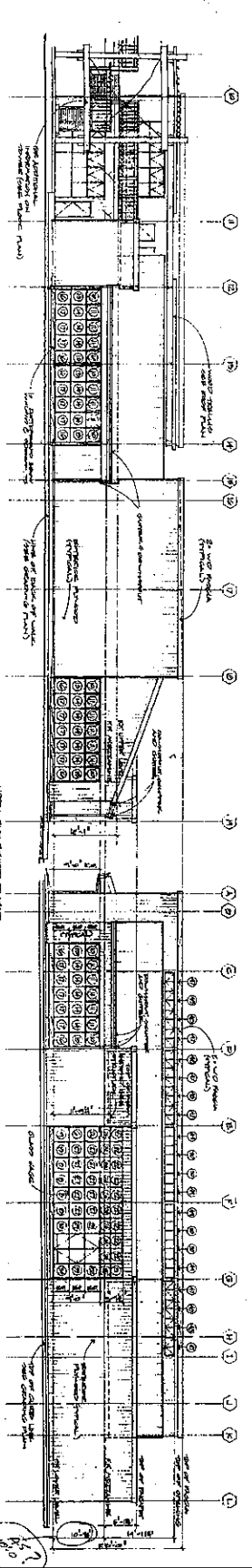


|                  |                       |  |                       |  |                       |
|------------------|-----------------------|--|-----------------------|--|-----------------------|
| <p><b>A3</b></p> | <p>DATE: 10/15/50</p> | <p><b>RETAIL STORES</b><br/>         100 WEST COAST HIGHWAY, SUITE 112, LOS ANGELES, CALIF.<br/>         FOR RENT OR LEASE<br/> <b>MARINERS MILE COMPANY</b><br/>         100 WEST COAST HIGHWAY, SUITE 112, LOS ANGELES, CALIF.</p> | <p>DATE: 10/15/50</p> | <p><b>WILSON V. WOODMAN AND ASSOCIATES</b><br/>         ARCHITECTS<br/>         100 WEST COAST HIGHWAY, SUITE 112, LOS ANGELES, CALIF.</p> | <p>DATE: 10/15/50</p> |
|------------------|-----------------------|--|-----------------------|--|-----------------------|

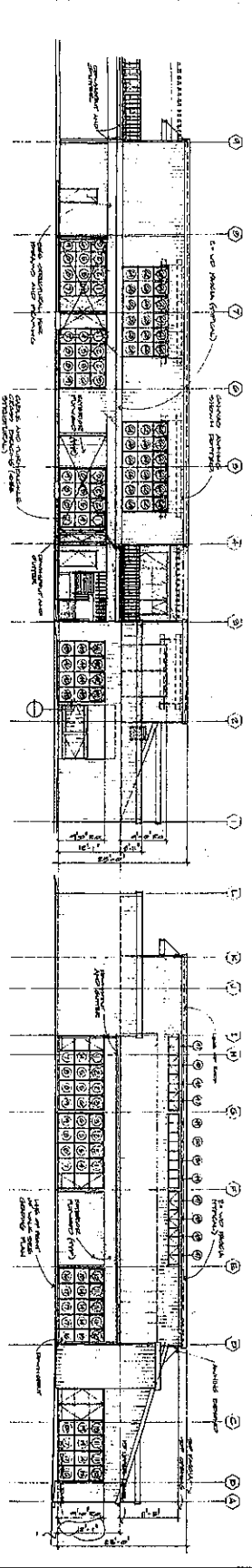
BATHING SECTION ELEVATION - LOOKING SOUTH



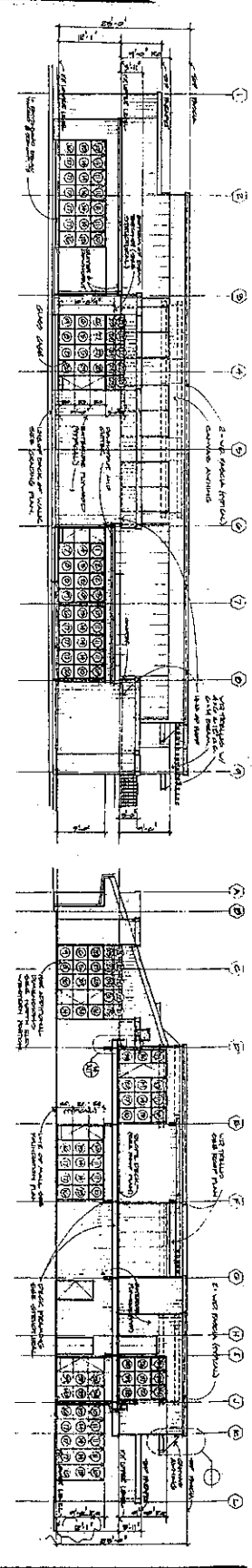
BATHING SECTION ELEVATION - LOOKING WEST



BATHING SECTION ELEVATION - LOOKING SOUTH



BATHING SECTION ELEVATION - LOOKING WEST



**RETAIL STORES**  
 2700 WEST COAST HIGHWAY, NEWPORT BEACH, CALIFORNIA

**MARINERS MILE COMPANY**  
 1710 CAMINO MILEADO #1, SAN ANSELMO, CALIFORNIA 94066  
 1828 ANTIQUA WAY NEWPORT BEACH, CALIFORNIA 92660

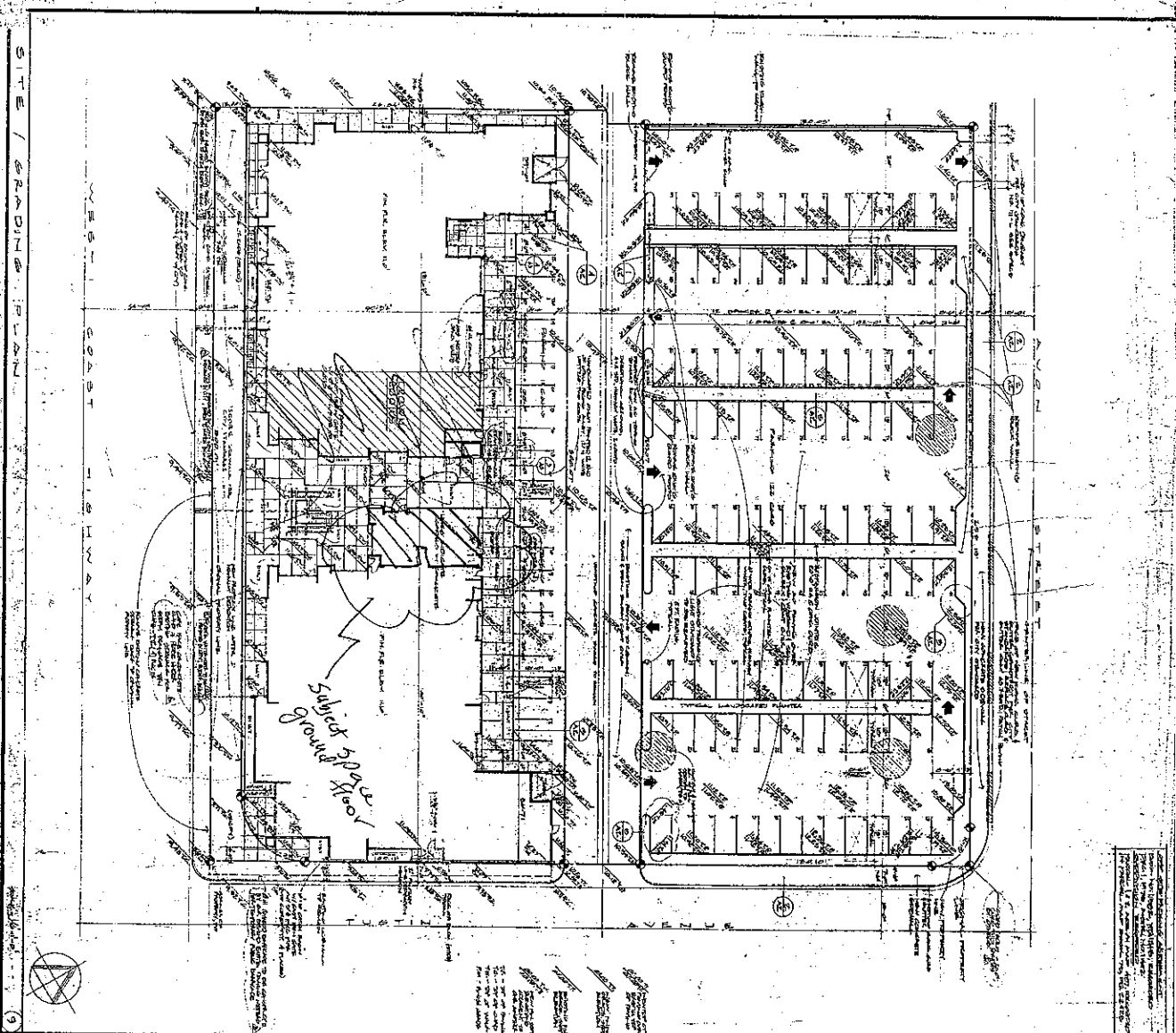


**WILSON V. WOODMAN AND ASSOCIATES**

WILSON V. WOODMAN      CIEL WOODMAN  
 A.I.A.      A. R. C.      I. D.      I. D.

230 NEWPORT CENTER DRIVE, SUITE 305, OCEAN PLAZA  
 NEWPORT BEACH, CALIFORNIA 92660      714 448-0161



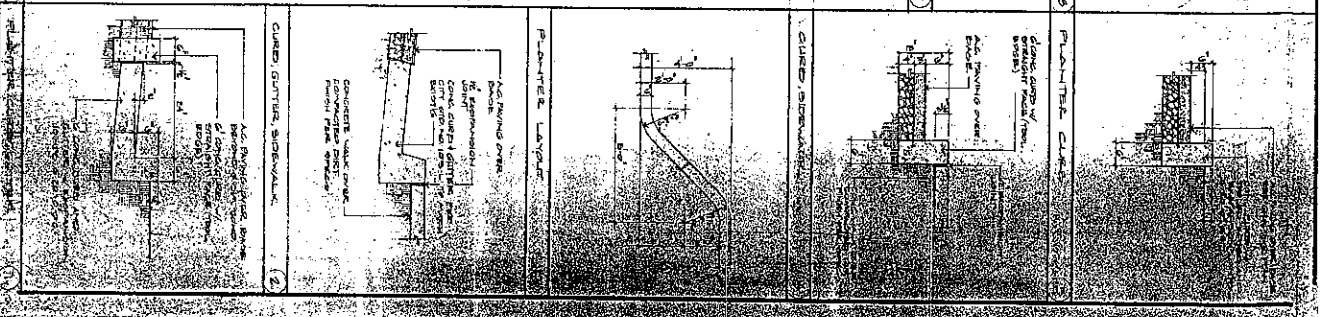


**REVISIONS**

|    |          |      |
|----|----------|------|
| 1  | REVISION | DATE |
| 1  | REVISION | DATE |
| 2  | REVISION | DATE |
| 3  | REVISION | DATE |
| 4  | REVISION | DATE |
| 5  | REVISION | DATE |
| 6  | REVISION | DATE |
| 7  | REVISION | DATE |
| 8  | REVISION | DATE |
| 9  | REVISION | DATE |
| 10 | REVISION | DATE |

**GENERAL NOTES**

1. GENERAL NOTES
2. GENERAL NOTES
3. GENERAL NOTES
4. GENERAL NOTES
5. GENERAL NOTES
6. GENERAL NOTES
7. GENERAL NOTES
8. GENERAL NOTES
9. GENERAL NOTES
10. GENERAL NOTES
11. GENERAL NOTES
12. GENERAL NOTES
13. GENERAL NOTES
14. GENERAL NOTES
15. GENERAL NOTES
16. GENERAL NOTES
17. GENERAL NOTES
18. GENERAL NOTES
19. GENERAL NOTES
20. GENERAL NOTES



**A2**

**RETAIL STORES**  
2700 WEST COAST HIGHWAY, NEWPORT BEACH, CALIFORNIA  
FOR  
**MARINERS MILE COMPANY**  
1710 CAMINO MARINERO #3, LOS ANGELES, CALIFORNIA 90025  
1832 ARDENNE WAY, "MCCREY" GARDEN, CALIFORNIA 92620

**WILSON & WOODMAN AND ASSOCIATES**  
WILSON & WOODMAN ARCHITECTS  
1710 CAMINO MARINERO #3, LOS ANGELES, CALIFORNIA 90025  
1832 ARDENNE WAY, "MCCREY" GARDEN, CALIFORNIA 92620

**CROWN BOOKS**