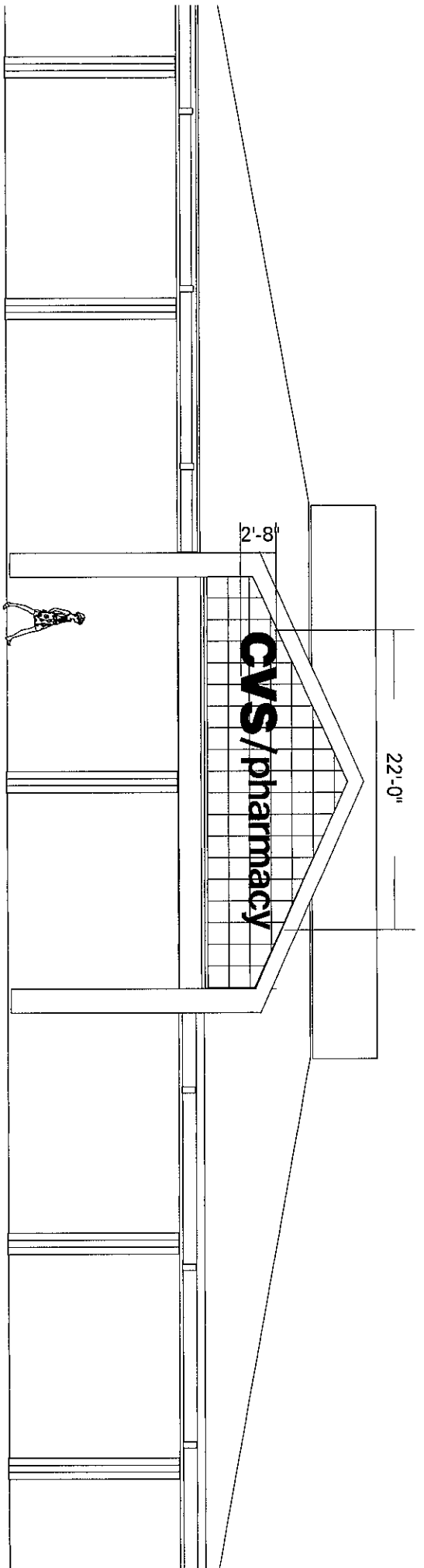


**Signs A1 & A2 - Major Tenant Signage**

Scale 3/32" = 1' 0"

Plexiglas faced channel letters mounted with 1/2" spacers off wall.  
Tenant choice of colors with landlord approval.  
Tenant receives 1.5 sq.ft. of sign space per lineal foot of store frontage.  
Elevation is typical both East and South elevations.

- A1 - East Elevation - 2555 Eastbluff
- A2 - South Elevation - 2555 Eastbluff

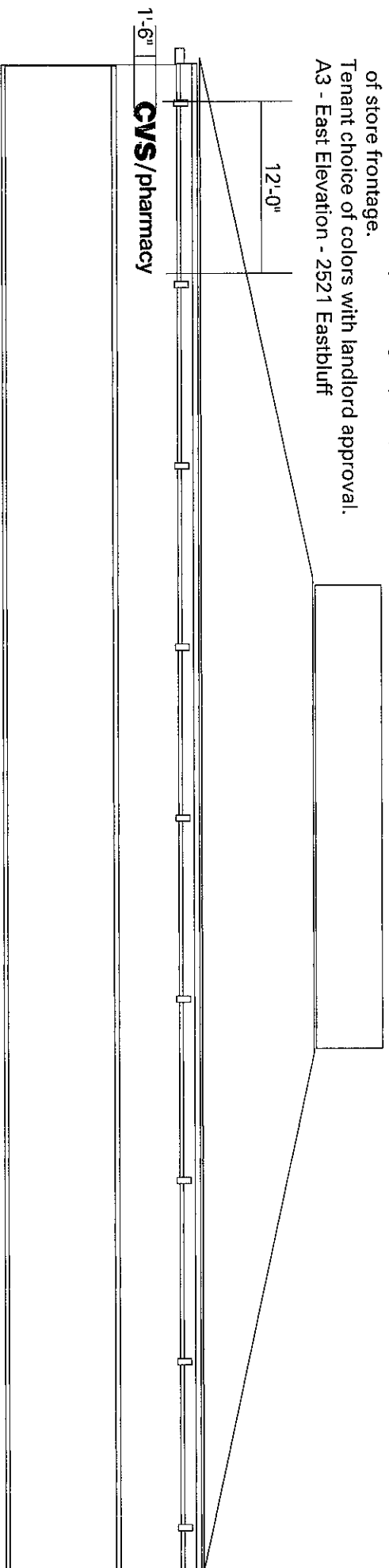


**Sign A3 - Major Tenant Signage**

Scale 3/32" = 1' 0"

Plexiglas faced channel letters mounted with 1/2" spacers off wall.  
 Tenant receives 1.5 sq.ft. of sign space per lineal foot of store frontage.

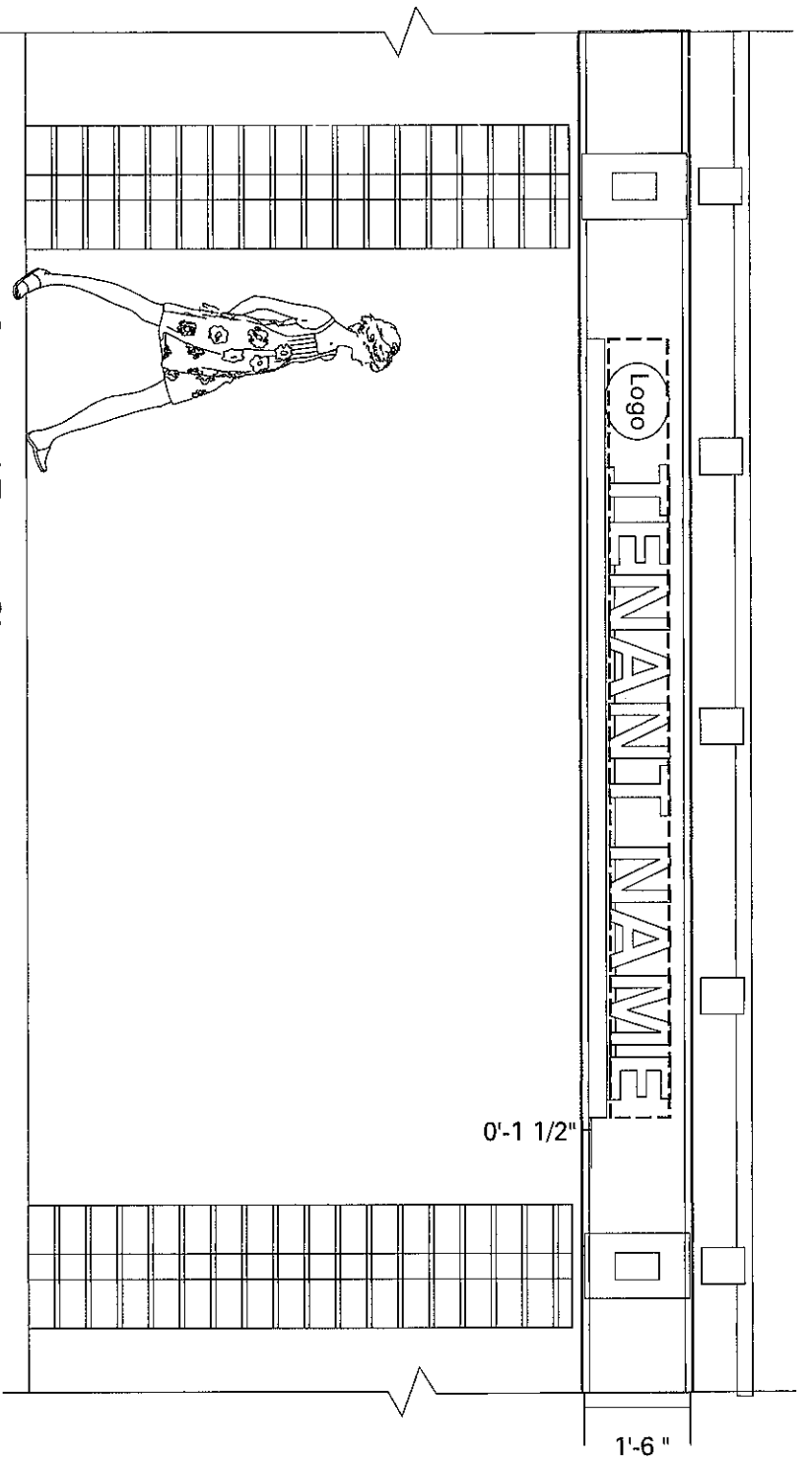
Tenant choice of colors with landlord approval.  
 A3 - East Elevation - 2521 Eastbluff



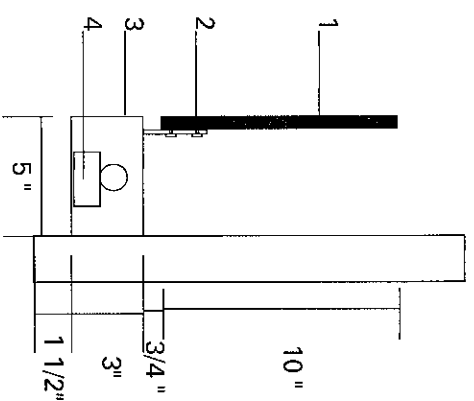
**Sign A4 - Major Tenant Signage**

Scale 3/32" = 1' 0"

Plexiglas faced channel letters mounted with 1/2" spacers off wall.  
 Tenant choice of colors with landlord approval.  
 Tenant receives 1.5 sq.ft. of sign space per lineal foot of store frontage.  
 A4 - South Elevation - 2521 Eastbluff

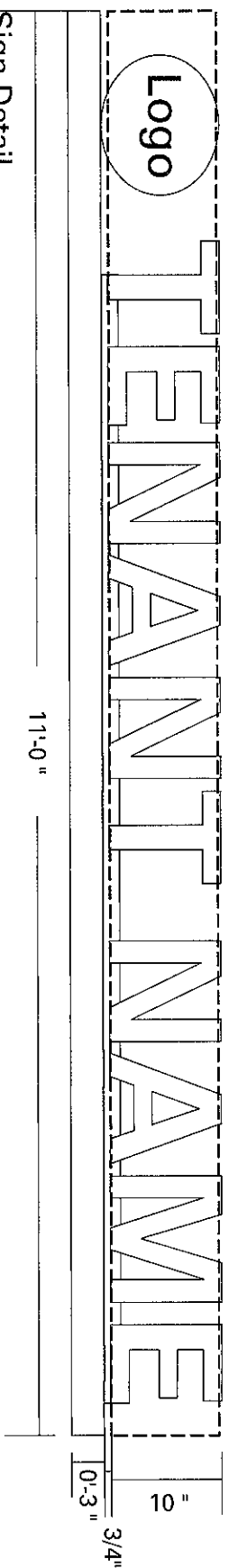


**Sign Type B1 - Courtyard Tenant Sign**  
 Scale 3/8" = 1' 0"



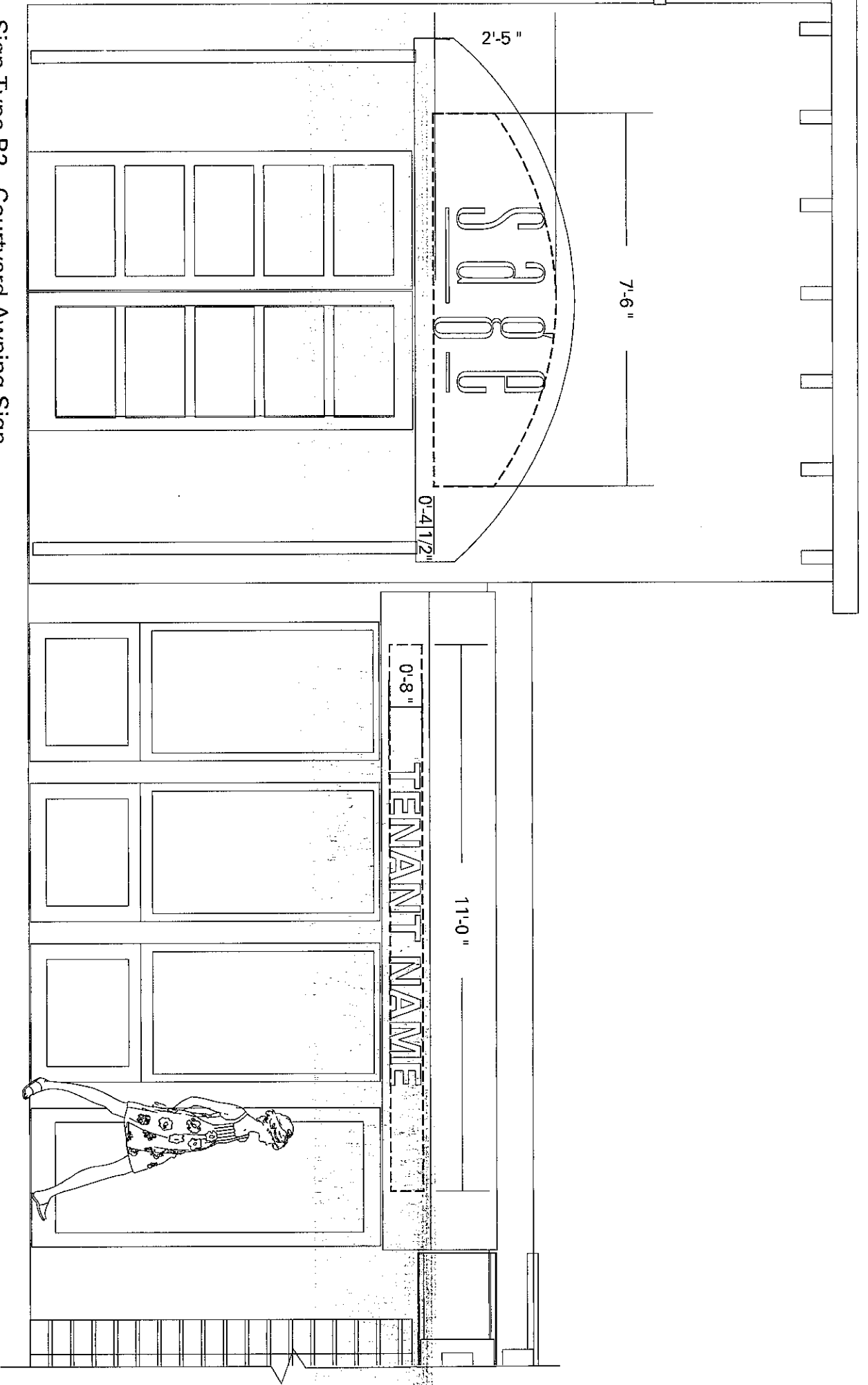
**Section Detail**  
 Scale 1-1/2" = 1' 0"

1. 1/2" thick PVC, paint finish
2. 3/16" thick clear plex support
3. 3" x 5" aluminum lightbar
4. Fluorescent lamp illumination



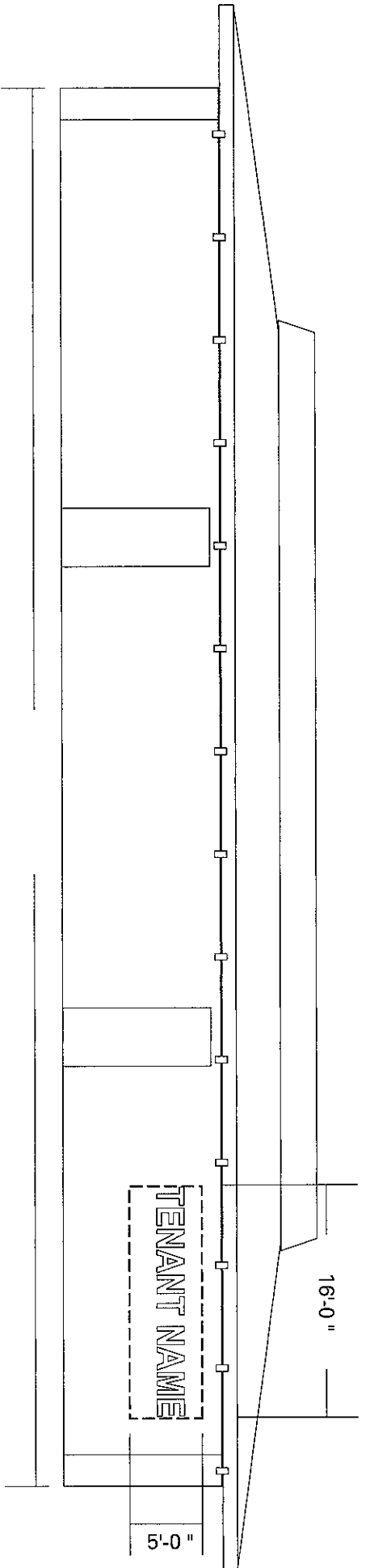
**Sign Detail**  
 Scale 3/4" = 1' 0"

1/2" thick PVC letters with paint finish attached with 3/16" thick clear plex support attached to top of 3" x 5" aluminum lightbar with fluorescent lamp and clear acrylic lens.



**Sign Type B2 - Courtyard Awning Sign**  
 Scale 3/8" = 1' 0"

Painted graphics on canvas awnings. Design and copy to be approved by landlord.

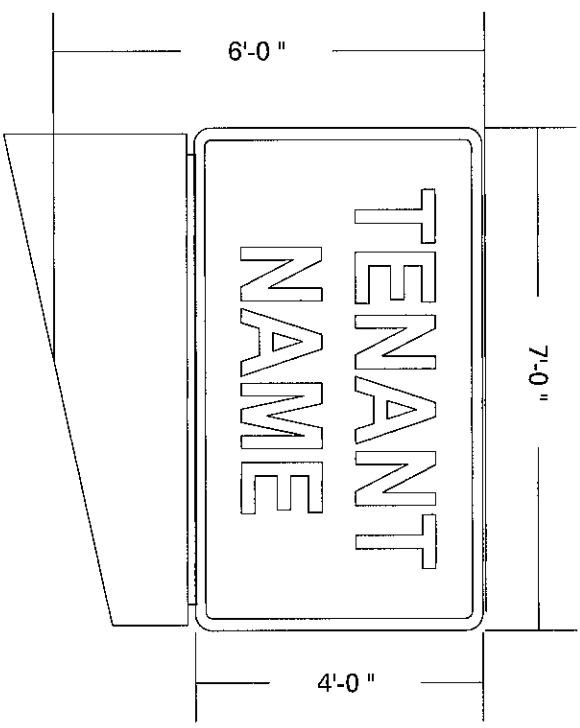


**Sign C - Pad Building Wall Sign**

Scale 3/32" = 1' 0"

North Elevation

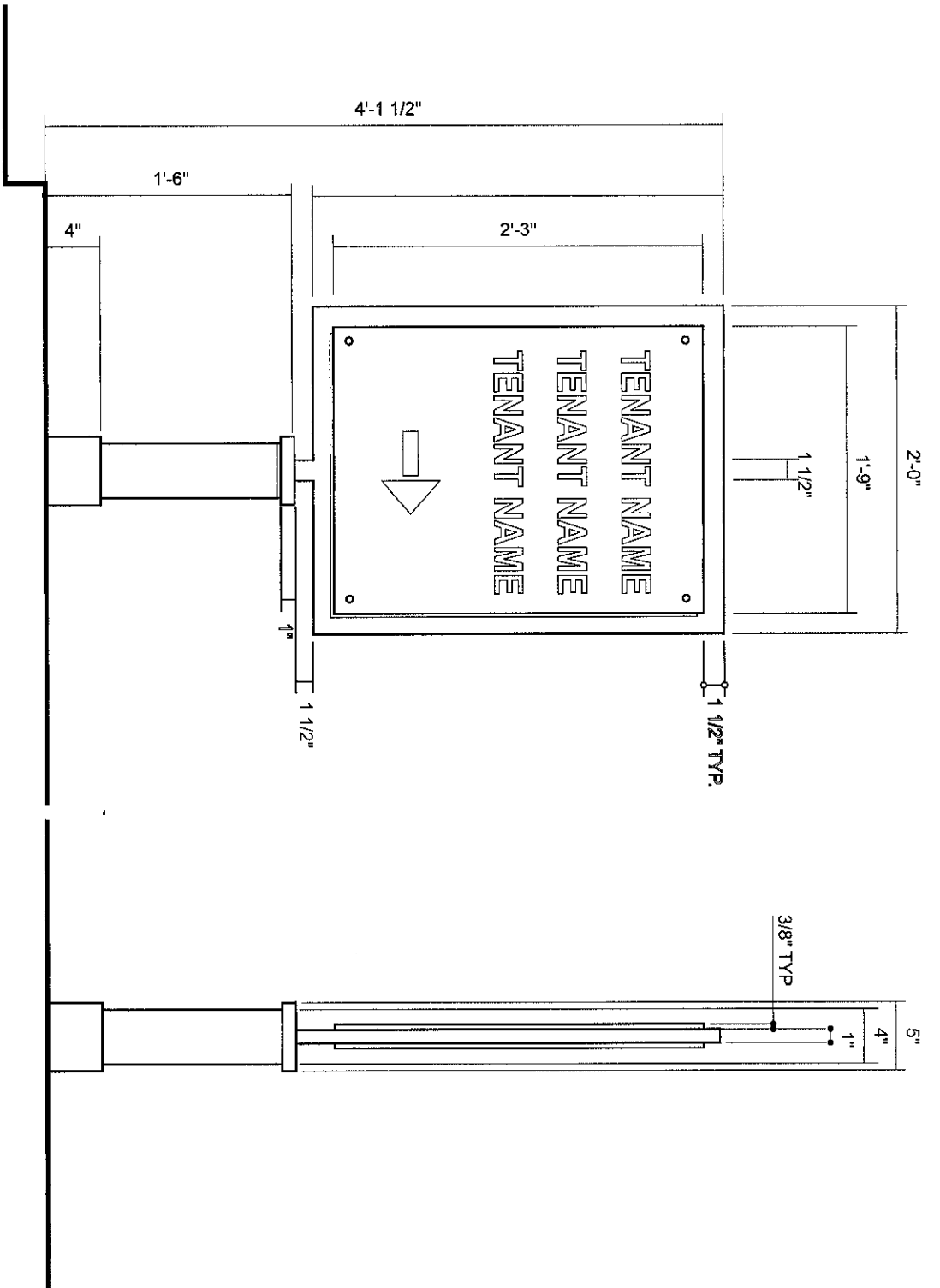
Wall mounted sign. Aluminum cabinet with push thru plex copy with internal fluorescent lamp illumination or channel letter signage on raceway. Tenant receives 1.5 sq.ft. of sign space per lineal foot of store frontage.



**Sign M3 - Pad Building Monument Sign**

Scale 3/8" = 1' 0"

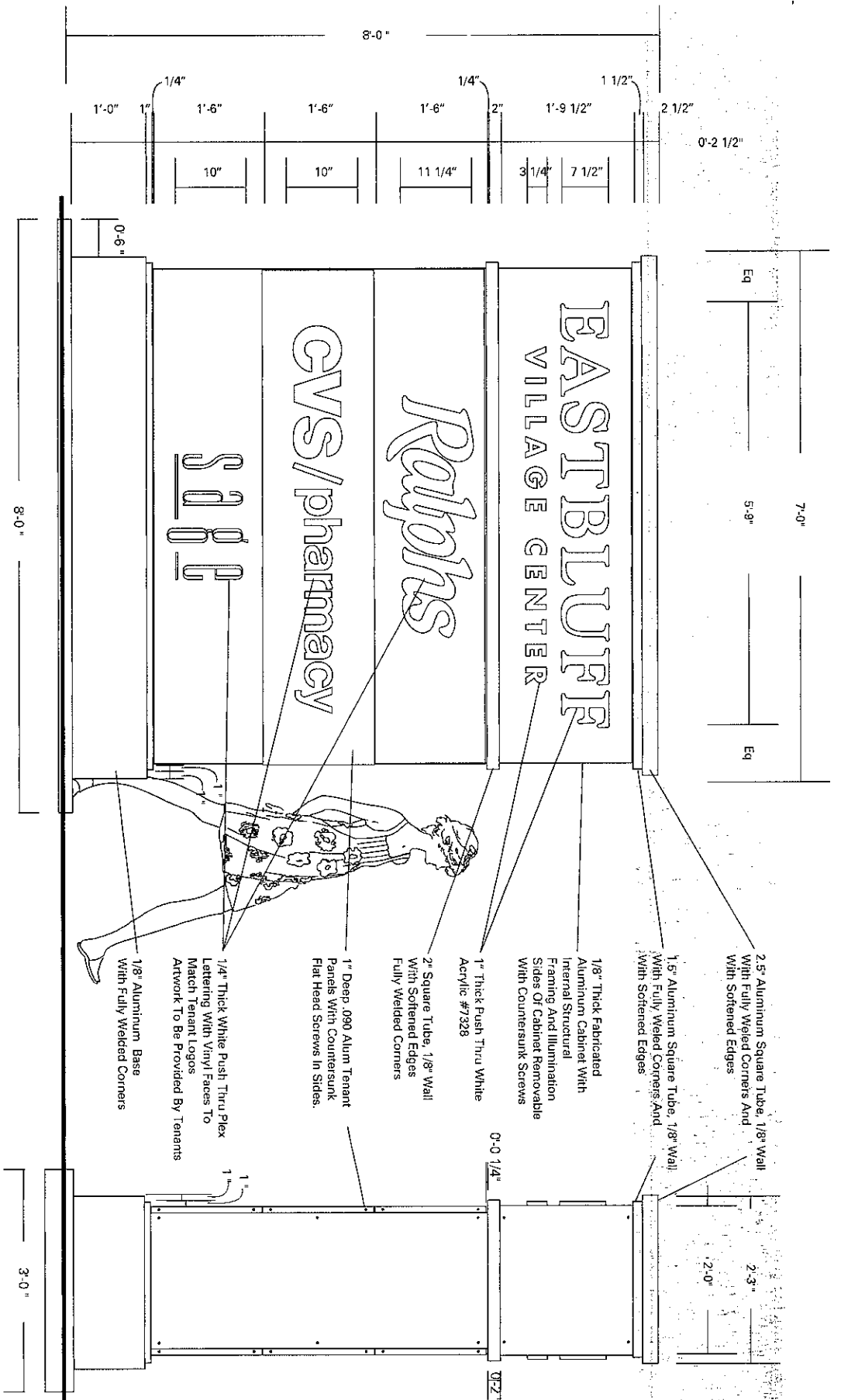
Double faced internally illuminated monument sign cabinet on metal base. Sign face to be aluminum with push thru plex lettering.



**Sign Type D Detail**

Scale 1" = 1'-0"

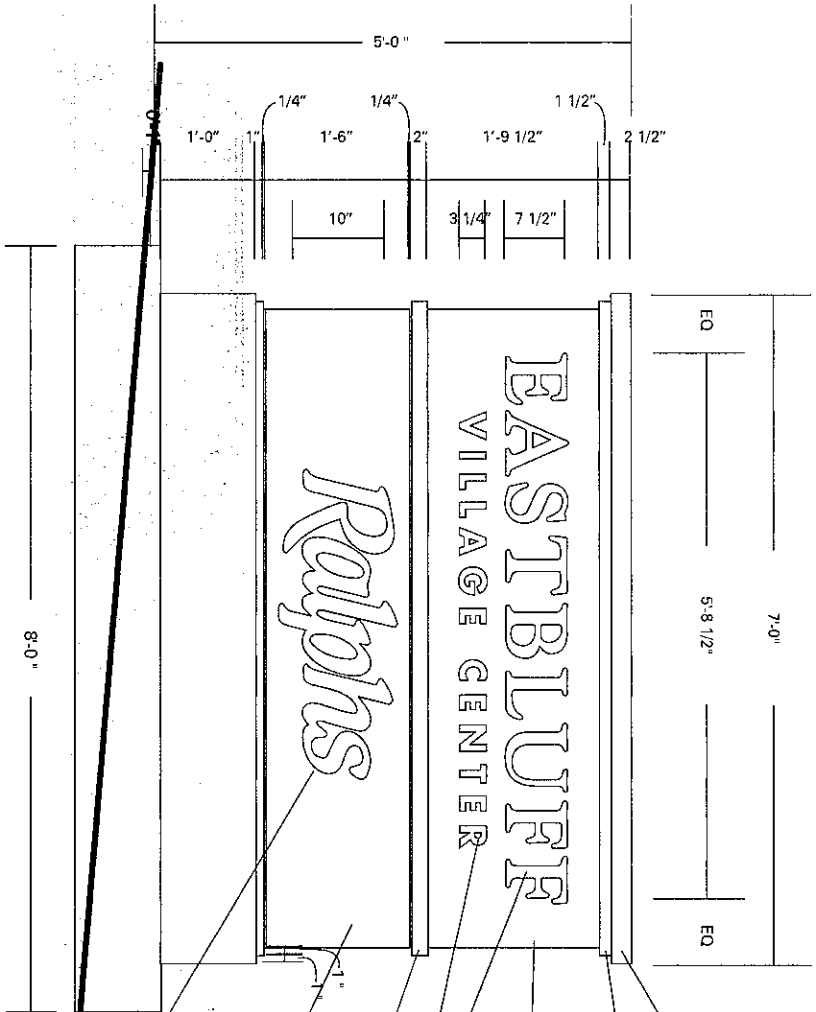
Aluminum panels with paint finish and vinyl graphics.



**Sign M1 & M2 Detail**

Scale 1/2" = 1' 0"

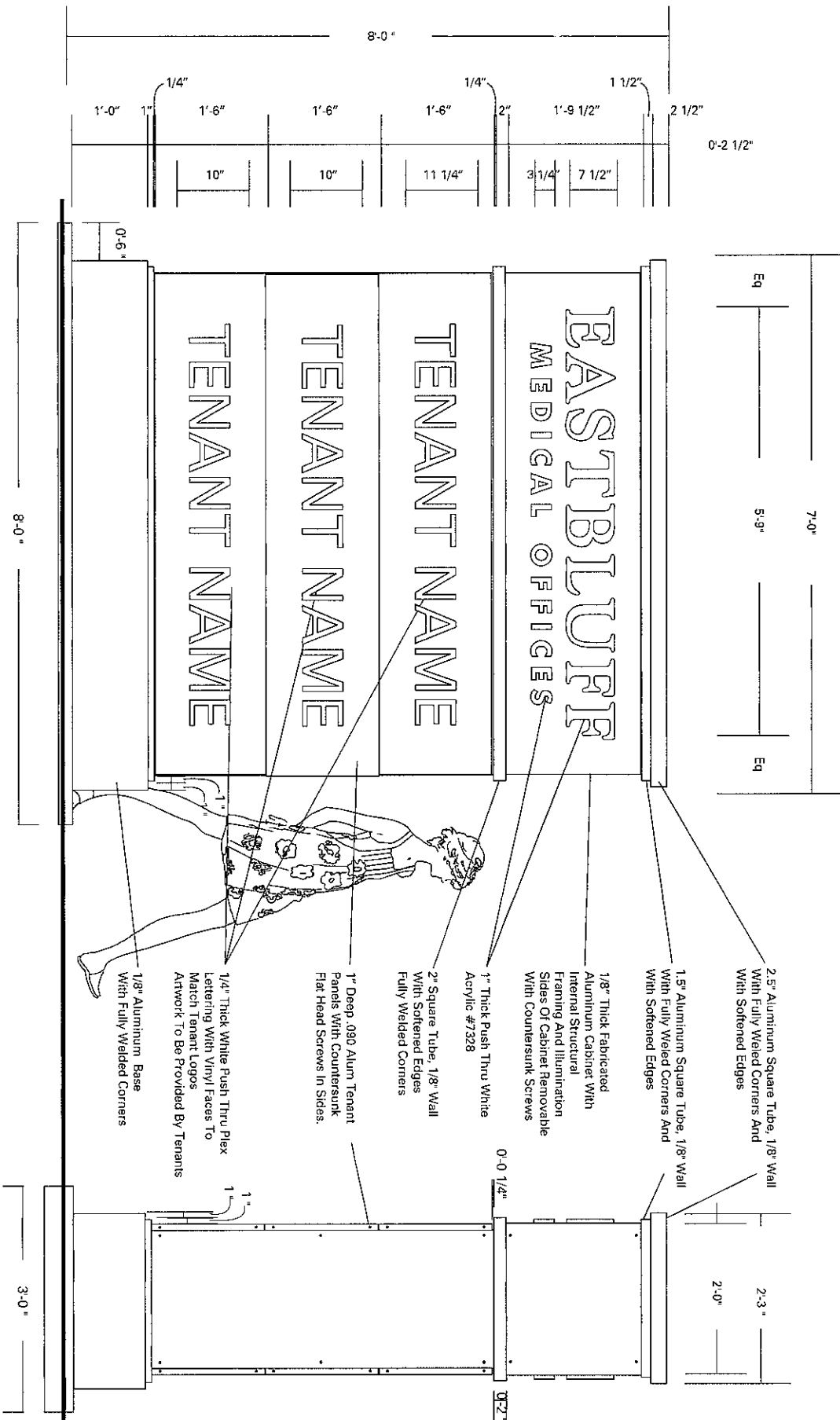
- M1 - Double sided
- M2 - Single sided



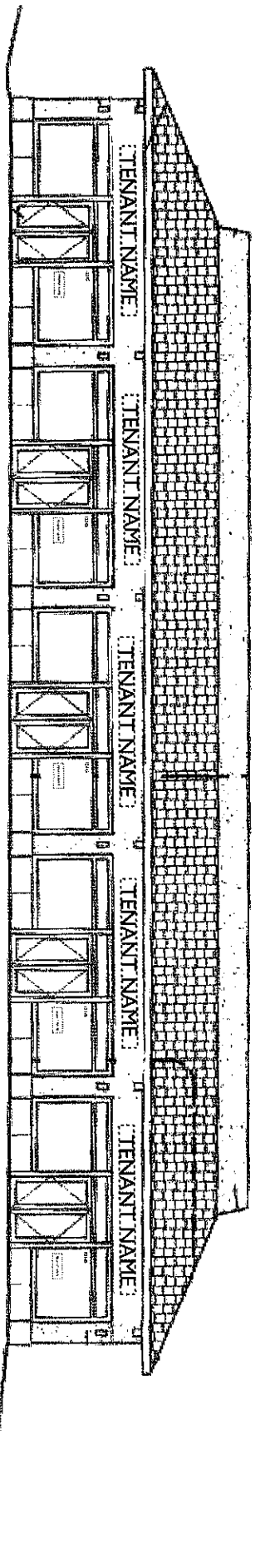
**Sign M4 Detail**  
 Scale 1/2" = 1' 0"

- 2.5" Aluminum Square Tube, 1/8" Wall With Fully Welded Corners And With Softened Edges
- 1.5" Aluminum Square Tube, 1/8" Wall With Fully Welded Corners And With Softened Edges
- 1/8" Thick Fabricated Aluminum Cabinet With Internal Structural Framing And Illumination Sides Of Cabinet Removable With Countersunk Screws
- 1" Thick Push Thru White Acrylic #7328
- 2" Square Tube, 1/8" Wall With Softened Edges Fully Welded Corners
- 1" Deep .090 Alum. Tenent Panels With Countersunk Flat Head Screws In Sides.
- 1/4" Thick White Push Thru Plex Lettering With Vinyl Faces To Match Tenent Logos Artwork To Be Provided By Tenants



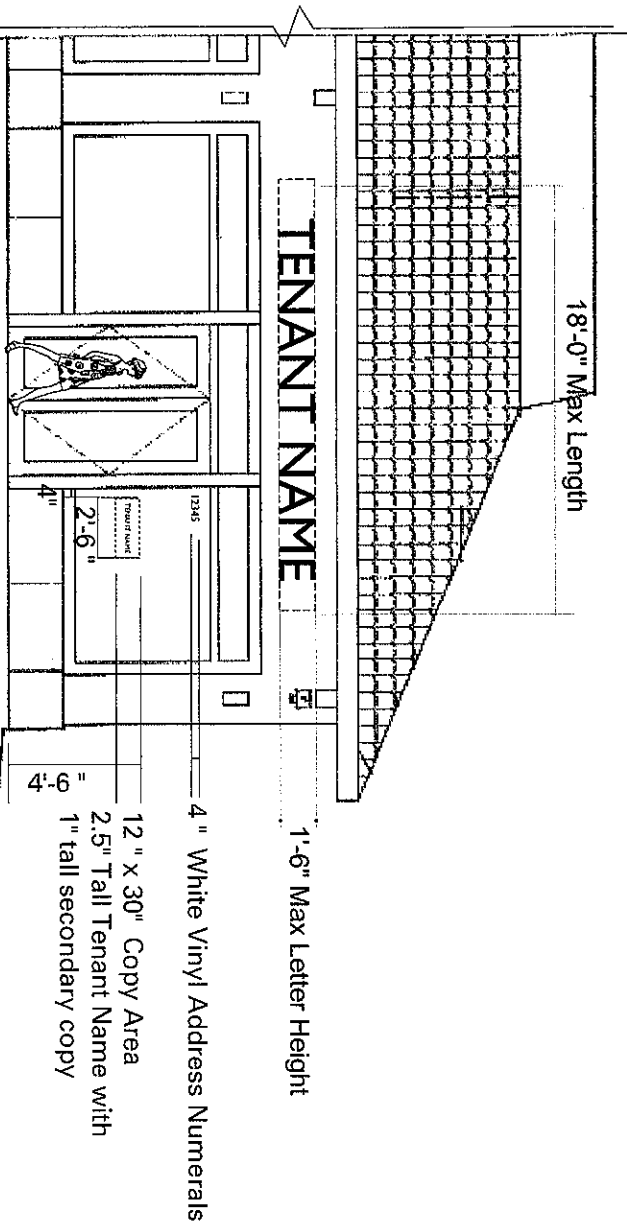


**Sign M5 Detail**  
 Scale 1/2" = 1' 0"



**Sign Type E1 - Medical Office Tenant Wall Signs**

Scale 1/16" = 1' 0"  
North Elevation



**Sign Type E1 & E2 - Medical Office Tenant Signs**

Scale 1/8" = 1' 0"  
North Elevation

E1 Sign To Consist Of Internally Illuminated Face Lit Channel Letters with tenants name or use. (e.g., Dentist, Emergency Care).  
1'-6" Max Letter Height. Max Sign Length Is 75% Of The Lease Frontage Not To Exceed 18'-0" Sign Max.

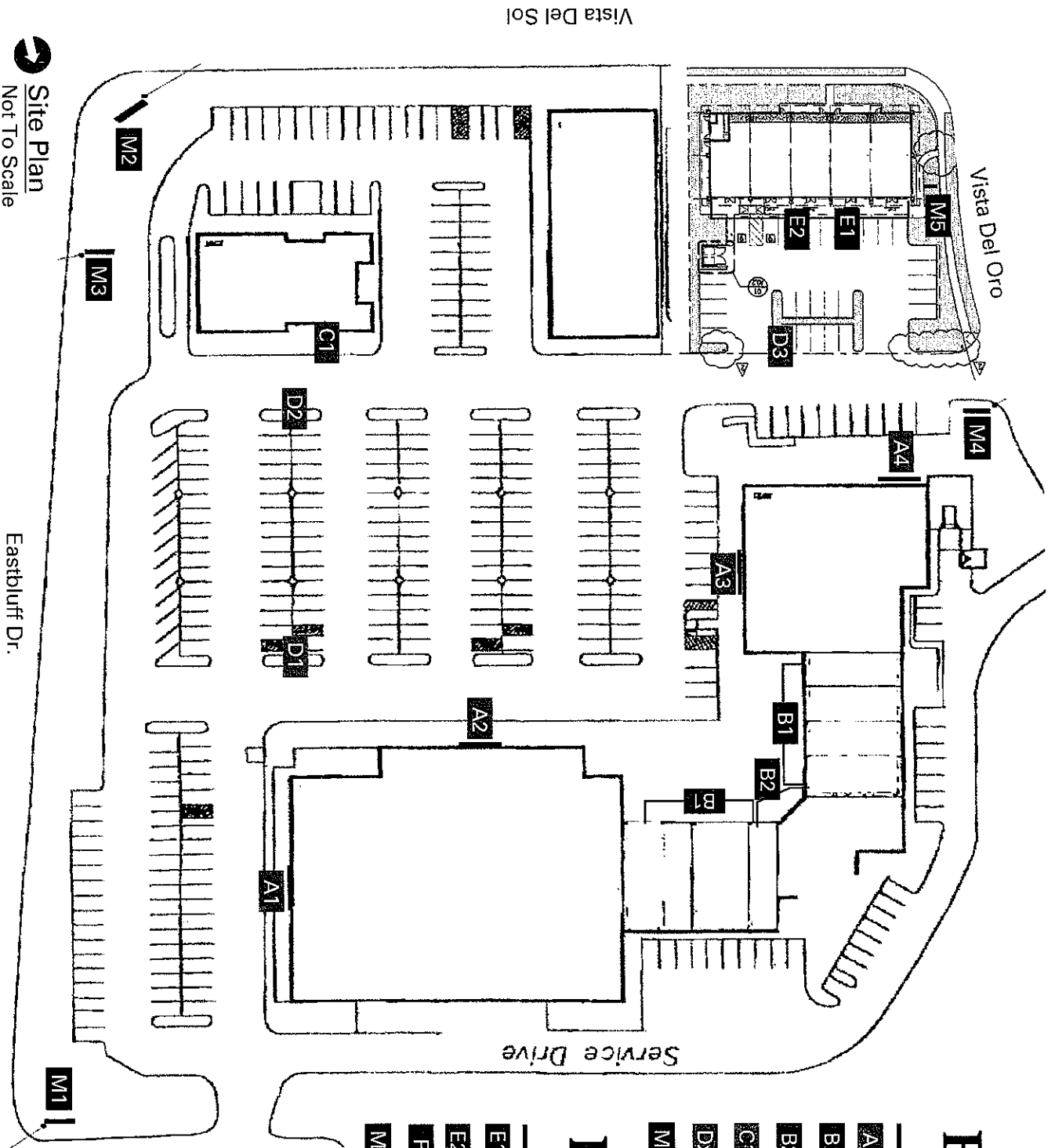
E2 Sign To Consist Of White Computer Cut Vinyl Applied To Exterior Of Glass.

# EASTBLUFF VILLAGE CENTER

- Ax** Major Tenant Wall Sign
- B1** Courtyard Tenant Wall Sign
- B2** Courtyard Tenant Awning Sign
- C1** Pad Building Wall Sign
- Dx** Directional Sign
- Mx** Monument Sign

# EASTBLUFF MEDICAL OFFICES

- E1** Medical Office Tenant Wall Sign
- E2** Medical Office Tenant Window Sign
- F** Medical Office Project ID Sign
- M5** Monument Sign



**Site Plan**  
Not To Scale