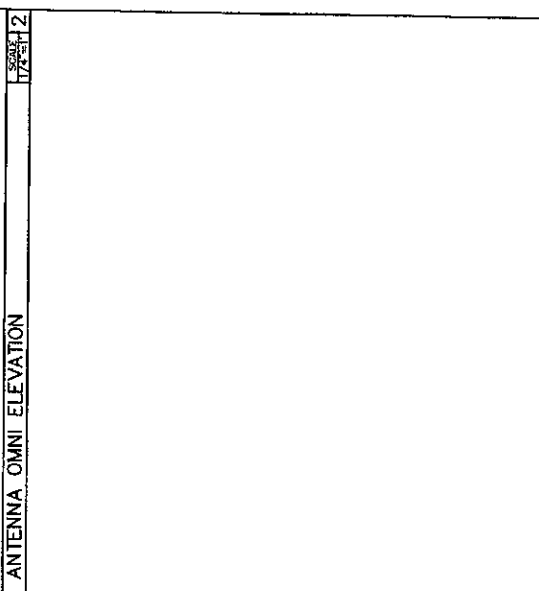
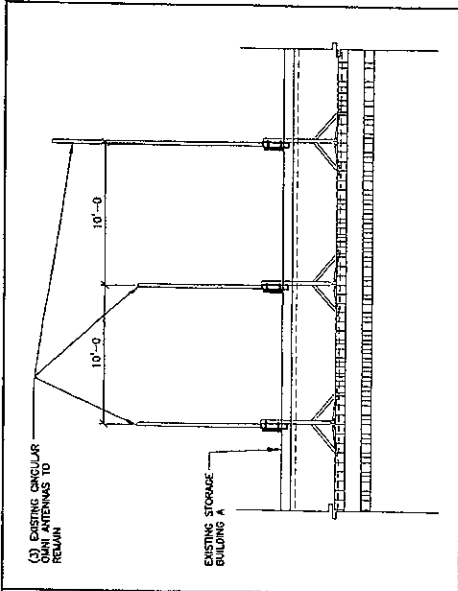
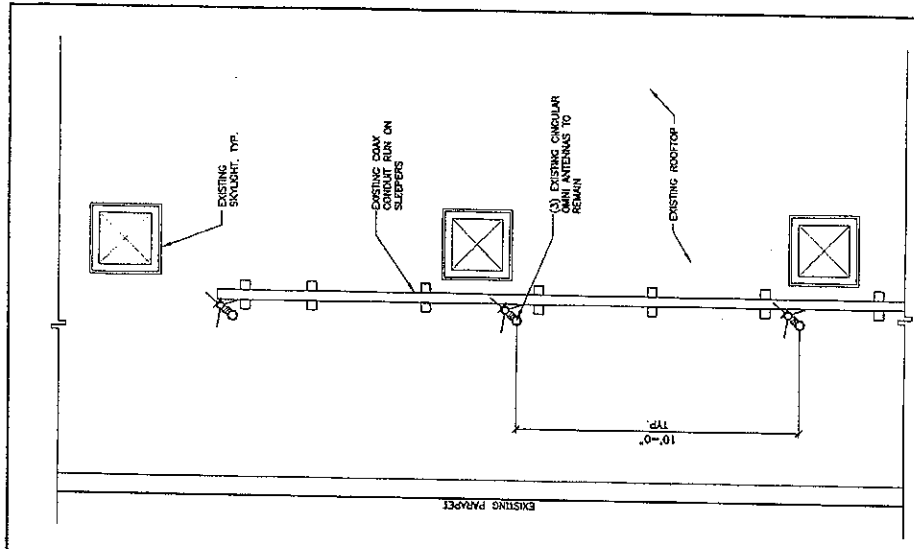


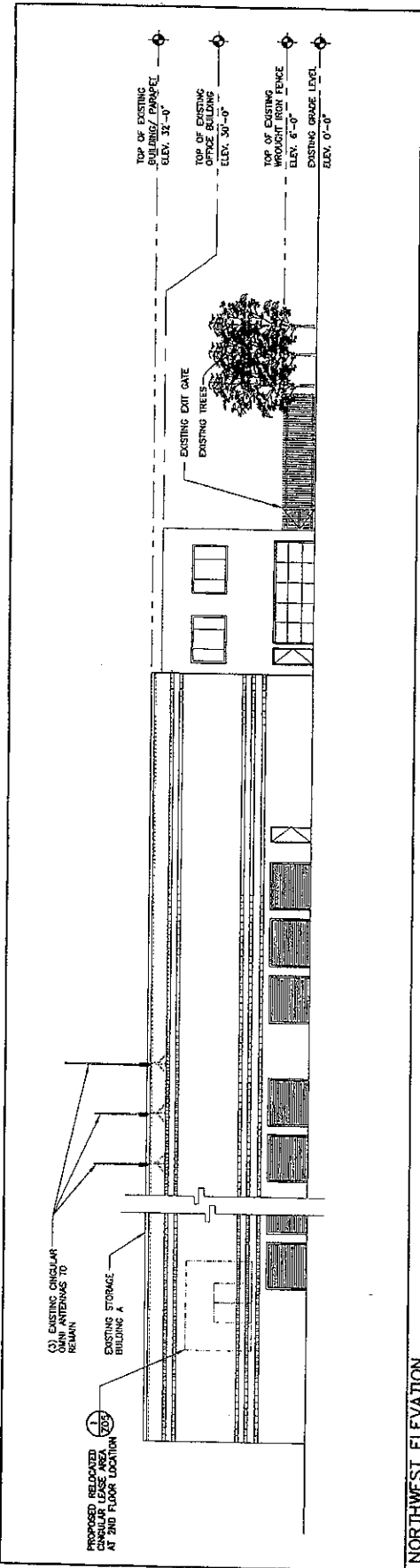


Copyright © 2003, Cingular Wireless LLC. All rights reserved. This document is the property of Cingular Wireless LLC. It is not to be used, disseminated, or reproduced in any form without the prior written permission of Cingular Wireless LLC. Cingular Wireless LLC and Cingular Wireless LLC are trademarks of Cingular Wireless LLC. All other trademarks are the property of their respective owners.

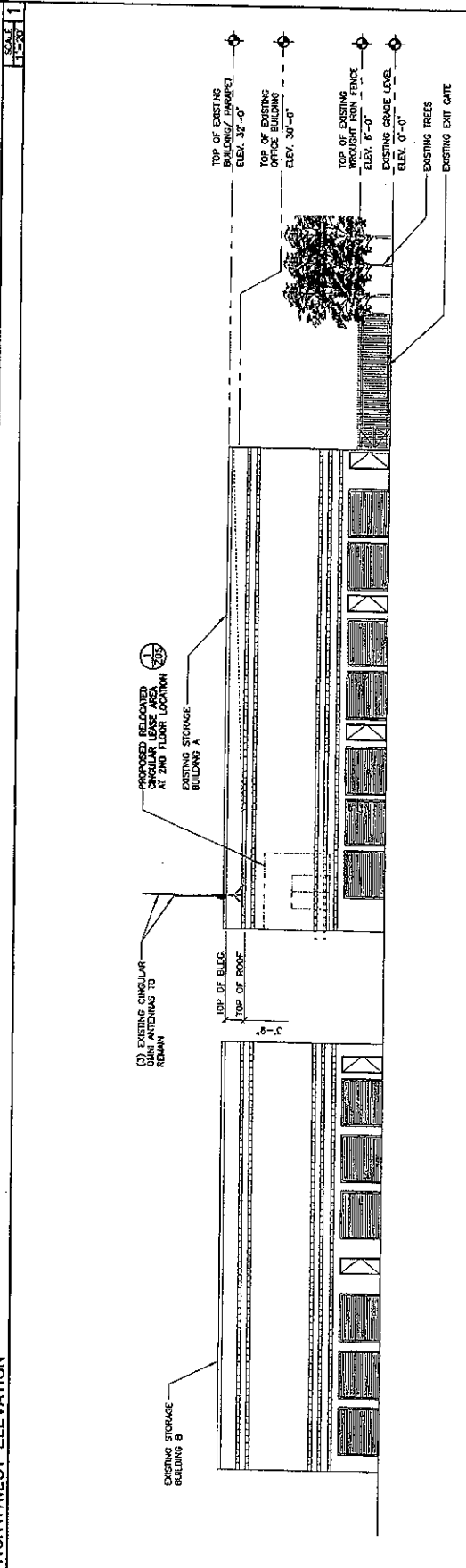


 CSI Communication Services, Inc. <small>1 Corporate Center Plaza, Suite 204, Newport Beach, CA 92614</small>				OMNI ANTENNA LAYOUT SCALE: 1/4" = 1'-0"	
LEASE AREA @ SECOND FLOOR LEVEL SCALE: 1/4" = 1'-0"		NOT USED SCALE: 1/4" = 1'-0"		CIRCULAR WIRELESS SCALE: 1/4" = 1'-0"	
JAMBOREE UNIVERSITY SITE NO. L5ANCART29 1111 CAMPUS DRIVE, SUITE 204 NEWPORT BEACH, CA 92614		NO. DATE BY 1 10/24/03 ISSUED & RE-DESIGNED FOR 2003 JAL JAL JAL 2 10/29/03 REVISIONS FOR 2003 JAL JAL JAL 3 10/29/03 REVISIONS FOR 2003 JAL JAL JAL 4 11/27/03 ISSUED FOR REVIEW JAL JAL JAL 5 11/27/03 ISSUED FOR REVIEW JAL JAL JAL		PROJECT NO. 041782-030 DRAWING NO. LA-L5ANCART29-203	

Copyright © Engineer Wireless LLC 2023. This item contains confidential information proprietary to Engineer Wireless LLC which is not to be used, copied, disseminated, or reproduced in any form without Engineer Wireless's prior written permission. Redistribution of this item is prohibited. The views, designs, and/or drawings are the property of Engineer Wireless LLC and shall remain the property of Engineer Wireless LLC. No part of this drawing may be reproduced without the prior written permission of Engineer Wireless LLC. All rights reserved.



NORTHWEST ELEVATION



SOUTHEAST ELEVATION

SI
Communication Services, Inc.
11111 JAMBOREE DRIVE, SUITE 204
NEWPORT BEACH, CA 92659
TEL: 949.261.1234 FAX: 949.261.1235

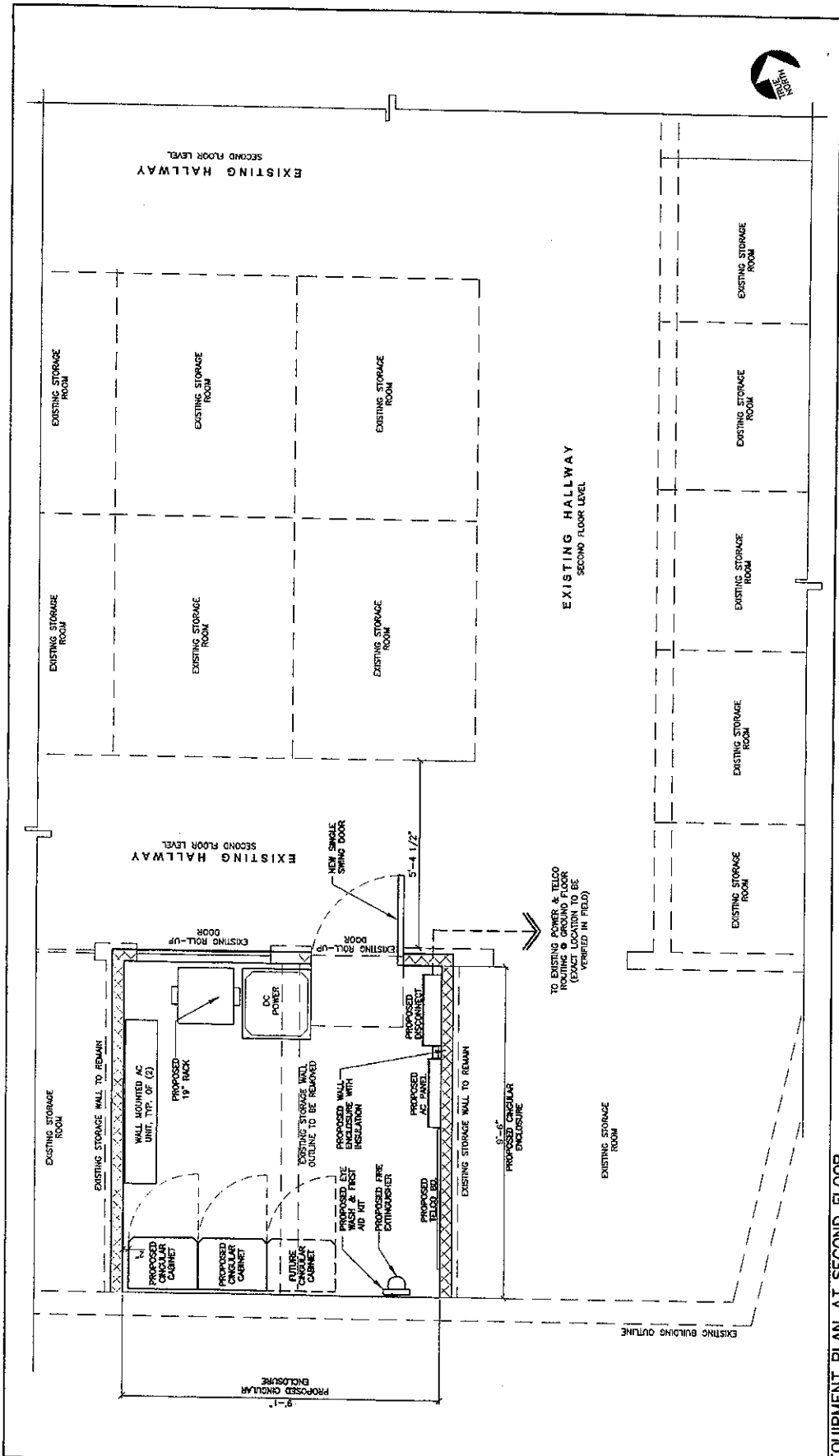
JAMBOREE/ UNIVERSITY
SITE NO. LSANCAR129
USD: T2487
1111 CANTON STREET, SUITE 204
NEWPORT BEACH, CA 92659
CA, U.S.A. NEWBEE 19-2043

CINGULAR WIRELESS

NO.	DATE	REVISIONS	BY	CHKD BY
1	10/25/21	ISSUED & RE-ISSUED FOR ZONING	AJ	AW
2	10/27/21	ISSUED & RE-ISSUED FOR ZONING	AS	AW
3	11/22/21	ISSUED & RE-ISSUED FOR ZONING	AS	AW
4	11/22/21	ISSUED & RE-ISSUED FOR ZONING	AJ	AW
5	11/22/21	ISSUED & RE-ISSUED FOR ZONING	AJ	AW
6	11/22/21	ISSUED & RE-ISSUED FOR ZONING	AS	AW
7	11/22/21	ISSUED & RE-ISSUED FOR ZONING	AS	AW
8	11/22/21	ISSUED & RE-ISSUED FOR ZONING	AS	AW
9	11/22/21	ISSUED & RE-ISSUED FOR ZONING	AS	AW
10	11/22/21	ISSUED & RE-ISSUED FOR ZONING	AS	AW
11	11/22/21	ISSUED & RE-ISSUED FOR ZONING	AS	AW
12	11/22/21	ISSUED & RE-ISSUED FOR ZONING	AS	AW
13	11/22/21	ISSUED & RE-ISSUED FOR ZONING	AS	AW
14	11/22/21	ISSUED & RE-ISSUED FOR ZONING	AS	AW
15	11/22/21	ISSUED & RE-ISSUED FOR ZONING	AS	AW
16	11/22/21	ISSUED & RE-ISSUED FOR ZONING	AS	AW
17	11/22/21	ISSUED & RE-ISSUED FOR ZONING	AS	AW
18	11/22/21	ISSUED & RE-ISSUED FOR ZONING	AS	AW
19	11/22/21	ISSUED & RE-ISSUED FOR ZONING	AS	AW
20	11/22/21	ISSUED & RE-ISSUED FOR ZONING	AS	AW
21	11/22/21	ISSUED & RE-ISSUED FOR ZONING	AS	AW
22	11/22/21	ISSUED & RE-ISSUED FOR ZONING	AS	AW
23	11/22/21	ISSUED & RE-ISSUED FOR ZONING	AS	AW
24	11/22/21	ISSUED & RE-ISSUED FOR ZONING	AS	AW
25	11/22/21	ISSUED & RE-ISSUED FOR ZONING	AS	AW
26	11/22/21	ISSUED & RE-ISSUED FOR ZONING	AS	AW
27	11/22/21	ISSUED & RE-ISSUED FOR ZONING	AS	AW
28	11/22/21	ISSUED & RE-ISSUED FOR ZONING	AS	AW
29	11/22/21	ISSUED & RE-ISSUED FOR ZONING	AS	AW
30	11/22/21	ISSUED & RE-ISSUED FOR ZONING	AS	AW
31	11/22/21	ISSUED & RE-ISSUED FOR ZONING	AS	AW
32	11/22/21	ISSUED & RE-ISSUED FOR ZONING	AS	AW
33	11/22/21	ISSUED & RE-ISSUED FOR ZONING	AS	AW
34	11/22/21	ISSUED & RE-ISSUED FOR ZONING	AS	AW
35	11/22/21	ISSUED & RE-ISSUED FOR ZONING	AS	AW
36	11/22/21	ISSUED & RE-ISSUED FOR ZONING	AS	AW
37	11/22/21	ISSUED & RE-ISSUED FOR ZONING	AS	AW
38	11/22/21	ISSUED & RE-ISSUED FOR ZONING	AS	AW
39	11/22/21	ISSUED & RE-ISSUED FOR ZONING	AS	AW
40	11/22/21	ISSUED & RE-ISSUED FOR ZONING	AS	AW
41	11/22/21	ISSUED & RE-ISSUED FOR ZONING	AS	AW
42	11/22/21	ISSUED & RE-ISSUED FOR ZONING	AS	AW
43	11/22/21	ISSUED & RE-ISSUED FOR ZONING	AS	AW
44	11/22/21	ISSUED & RE-ISSUED FOR ZONING	AS	AW
45	11/22/21	ISSUED & RE-ISSUED FOR ZONING	AS	AW
46	11/22/21	ISSUED & RE-ISSUED FOR ZONING	AS	AW
47	11/22/21	ISSUED & RE-ISSUED FOR ZONING	AS	AW
48	11/22/21	ISSUED & RE-ISSUED FOR ZONING	AS	AW
49	11/22/21	ISSUED & RE-ISSUED FOR ZONING	AS	AW
50	11/22/21	ISSUED & RE-ISSUED FOR ZONING	AS	AW

SCALE: 1"=20'-0"

Copyright © 2002, Cingular Wireless LLC. All rights reserved. This document contains confidential information and is intended for the use of the recipient named in the document. If you are not the named recipient, you should not disseminate, distribute, or use this information. If you are the named recipient, you should not disseminate, distribute, or use this information without the prior written consent of Cingular Wireless LLC. This document is the property of Cingular Wireless LLC and is loaned to you. It is not to be reproduced, copied, or distributed to any other person without the prior written consent of Cingular Wireless LLC. If you are not the named recipient, you should not disseminate, distribute, or use this information. If you are the named recipient, you should not disseminate, distribute, or use this information without the prior written consent of Cingular Wireless LLC.



EQUIPMENT PLAN AT SECOND FLOOR

Cingular WIRELESS

JAMBOREE UNIVERSITY
 SITE NO. LSANCAR129
 USID: 12487
 1111 GAMBELCK STREET, SUITE 204
 NEWPORT BEACH, CA 92614

CS ID: NAME: 11-0340

3	10/26/02	REVISED & RE-DESIGNED FOR ZONING	BY: JAC	CHK: JAC
4	11/20/02	REVISED & RE-DESIGNED FOR ZONING	BY: JAC	CHK: JAC
5	11/22/02	REVISED & RE-DESIGNED FOR ZONING	BY: JAC	CHK: JAC
6	11/22/02	REVISED & RE-DESIGNED FOR ZONING	BY: JAC	CHK: JAC
7	11/22/02	REVISED & RE-DESIGNED FOR ZONING	BY: JAC	CHK: JAC
8	11/22/02	REVISED & RE-DESIGNED FOR ZONING	BY: JAC	CHK: JAC
9	11/22/02	REVISED & RE-DESIGNED FOR ZONING	BY: JAC	CHK: JAC
10	11/22/02	REVISED & RE-DESIGNED FOR ZONING	BY: JAC	CHK: JAC
11	11/22/02	REVISED & RE-DESIGNED FOR ZONING	BY: JAC	CHK: JAC
12	11/22/02	REVISED & RE-DESIGNED FOR ZONING	BY: JAC	CHK: JAC
13	11/22/02	REVISED & RE-DESIGNED FOR ZONING	BY: JAC	CHK: JAC
14	11/22/02	REVISED & RE-DESIGNED FOR ZONING	BY: JAC	CHK: JAC
15	11/22/02	REVISED & RE-DESIGNED FOR ZONING	BY: JAC	CHK: JAC
16	11/22/02	REVISED & RE-DESIGNED FOR ZONING	BY: JAC	CHK: JAC
17	11/22/02	REVISED & RE-DESIGNED FOR ZONING	BY: JAC	CHK: JAC
18	11/22/02	REVISED & RE-DESIGNED FOR ZONING	BY: JAC	CHK: JAC
19	11/22/02	REVISED & RE-DESIGNED FOR ZONING	BY: JAC	CHK: JAC
20	11/22/02	REVISED & RE-DESIGNED FOR ZONING	BY: JAC	CHK: JAC
21	11/22/02	REVISED & RE-DESIGNED FOR ZONING	BY: JAC	CHK: JAC
22	11/22/02	REVISED & RE-DESIGNED FOR ZONING	BY: JAC	CHK: JAC
23	11/22/02	REVISED & RE-DESIGNED FOR ZONING	BY: JAC	CHK: JAC
24	11/22/02	REVISED & RE-DESIGNED FOR ZONING	BY: JAC	CHK: JAC
25	11/22/02	REVISED & RE-DESIGNED FOR ZONING	BY: JAC	CHK: JAC
26	11/22/02	REVISED & RE-DESIGNED FOR ZONING	BY: JAC	CHK: JAC
27	11/22/02	REVISED & RE-DESIGNED FOR ZONING	BY: JAC	CHK: JAC
28	11/22/02	REVISED & RE-DESIGNED FOR ZONING	BY: JAC	CHK: JAC
29	11/22/02	REVISED & RE-DESIGNED FOR ZONING	BY: JAC	CHK: JAC
30	11/22/02	REVISED & RE-DESIGNED FOR ZONING	BY: JAC	CHK: JAC
31	11/22/02	REVISED & RE-DESIGNED FOR ZONING	BY: JAC	CHK: JAC
32	11/22/02	REVISED & RE-DESIGNED FOR ZONING	BY: JAC	CHK: JAC
33	11/22/02	REVISED & RE-DESIGNED FOR ZONING	BY: JAC	CHK: JAC
34	11/22/02	REVISED & RE-DESIGNED FOR ZONING	BY: JAC	CHK: JAC
35	11/22/02	REVISED & RE-DESIGNED FOR ZONING	BY: JAC	CHK: JAC
36	11/22/02	REVISED & RE-DESIGNED FOR ZONING	BY: JAC	CHK: JAC
37	11/22/02	REVISED & RE-DESIGNED FOR ZONING	BY: JAC	CHK: JAC
38	11/22/02	REVISED & RE-DESIGNED FOR ZONING	BY: JAC	CHK: JAC
39	11/22/02	REVISED & RE-DESIGNED FOR ZONING	BY: JAC	CHK: JAC
40	11/22/02	REVISED & RE-DESIGNED FOR ZONING	BY: JAC	CHK: JAC
41	11/22/02	REVISED & RE-DESIGNED FOR ZONING	BY: JAC	CHK: JAC
42	11/22/02	REVISED & RE-DESIGNED FOR ZONING	BY: JAC	CHK: JAC
43	11/22/02	REVISED & RE-DESIGNED FOR ZONING	BY: JAC	CHK: JAC
44	11/22/02	REVISED & RE-DESIGNED FOR ZONING	BY: JAC	CHK: JAC
45	11/22/02	REVISED & RE-DESIGNED FOR ZONING	BY: JAC	CHK: JAC
46	11/22/02	REVISED & RE-DESIGNED FOR ZONING	BY: JAC	CHK: JAC
47	11/22/02	REVISED & RE-DESIGNED FOR ZONING	BY: JAC	CHK: JAC
48	11/22/02	REVISED & RE-DESIGNED FOR ZONING	BY: JAC	CHK: JAC
49	11/22/02	REVISED & RE-DESIGNED FOR ZONING	BY: JAC	CHK: JAC
50	11/22/02	REVISED & RE-DESIGNED FOR ZONING	BY: JAC	CHK: JAC

SCALE: AS SHOWN (CORRECTED)

DATE: 11/22/02

SCALE: 1/4" = 1'-0"

PROJECT: LSANCAR129-205

DATE: 11/22/02

SCALE: 1/4" = 1'-0"